

**A HOUSE FOR THE ARTISTS
NUBIAN SQUARE, BOSTON
CATHERINE EVANS
STUDIO 04**

CONCEPT

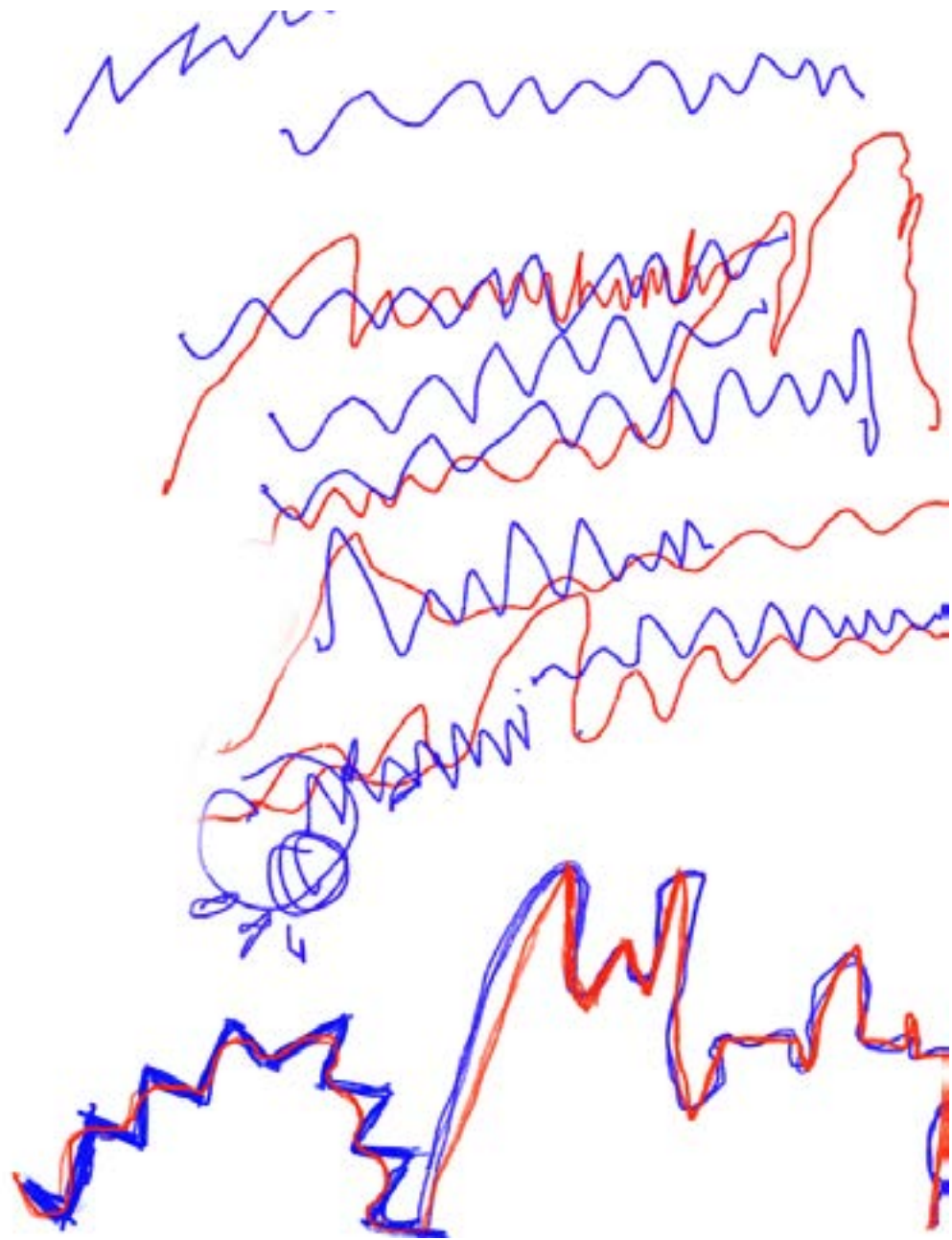


The art forms of Jon and Willie, music and poetry, are integral to the design process of this project. Both music and poetry are forms that can be reflected through language with music being depicted through the composition of notes while poetry is reflected through the utilization of words and their careful arrangement. Due to this similarity, the languages and art forms can be blended and such a concept is reflected throughout the structure.

SITE PLAN



PROCESS WORK



MUSIC IS NOTES

POETRY = WORDS

BOTH ARE LANGUAGE



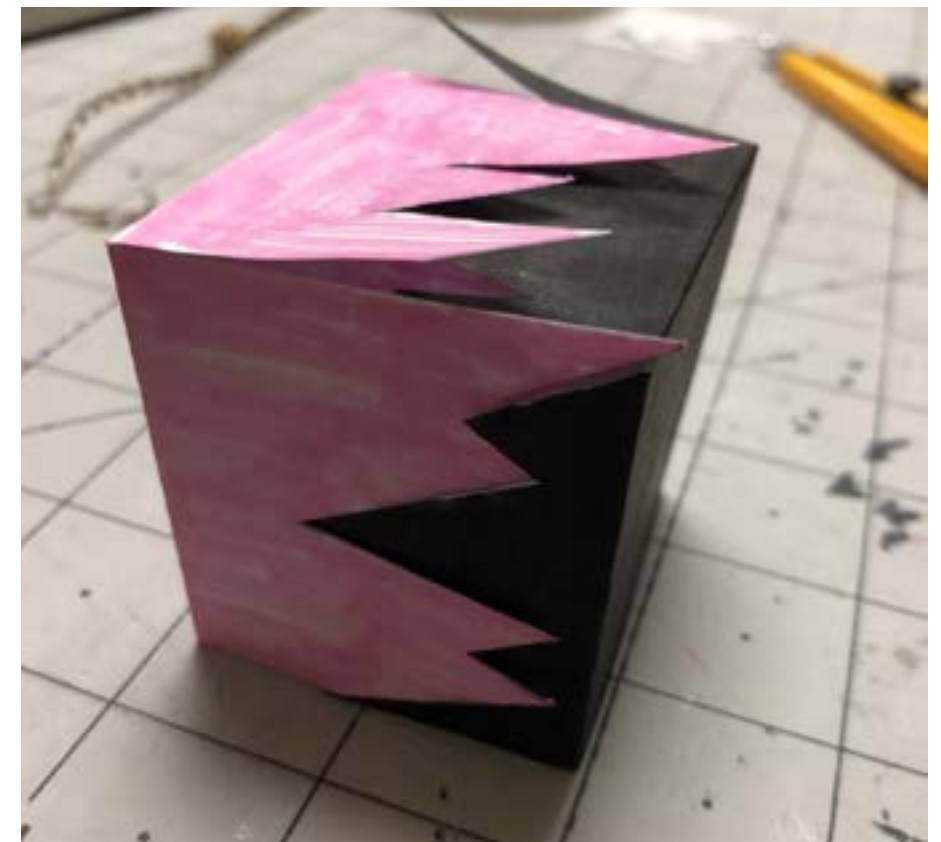
BOTH ARE READ

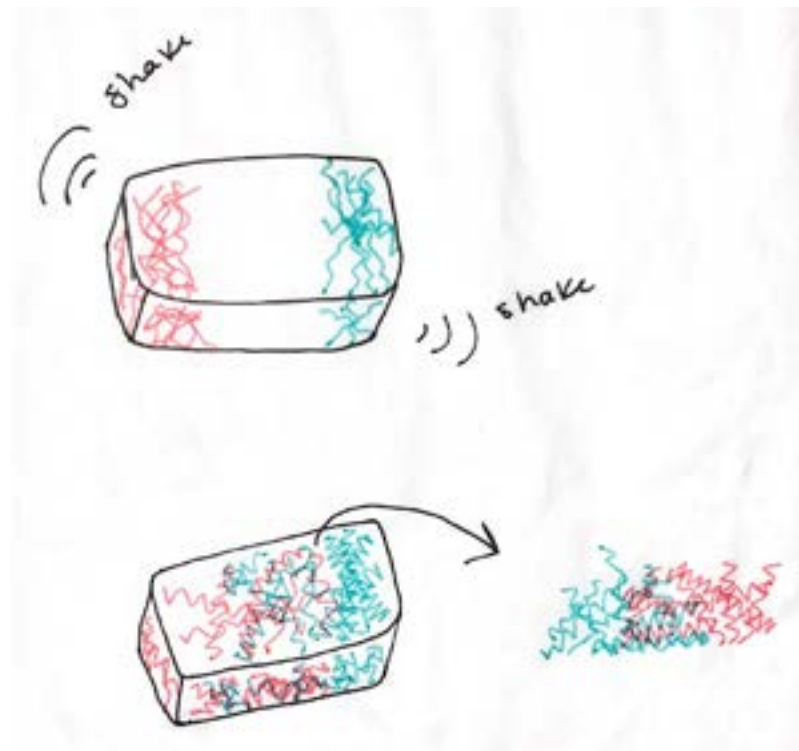
WORDS

BOTH ARE STRUCTURE

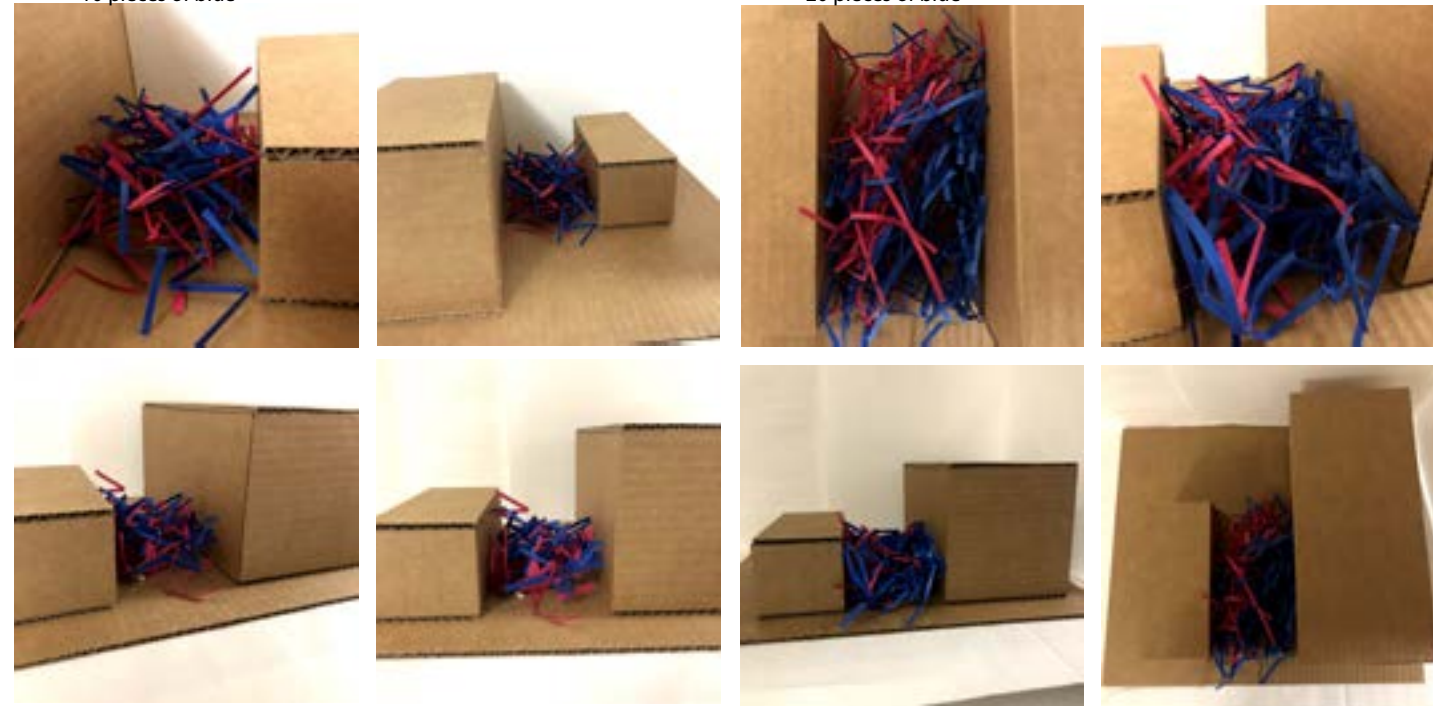
WORDS HAVE







Trial 1: 10 pieces of pink
10 pieces of blue



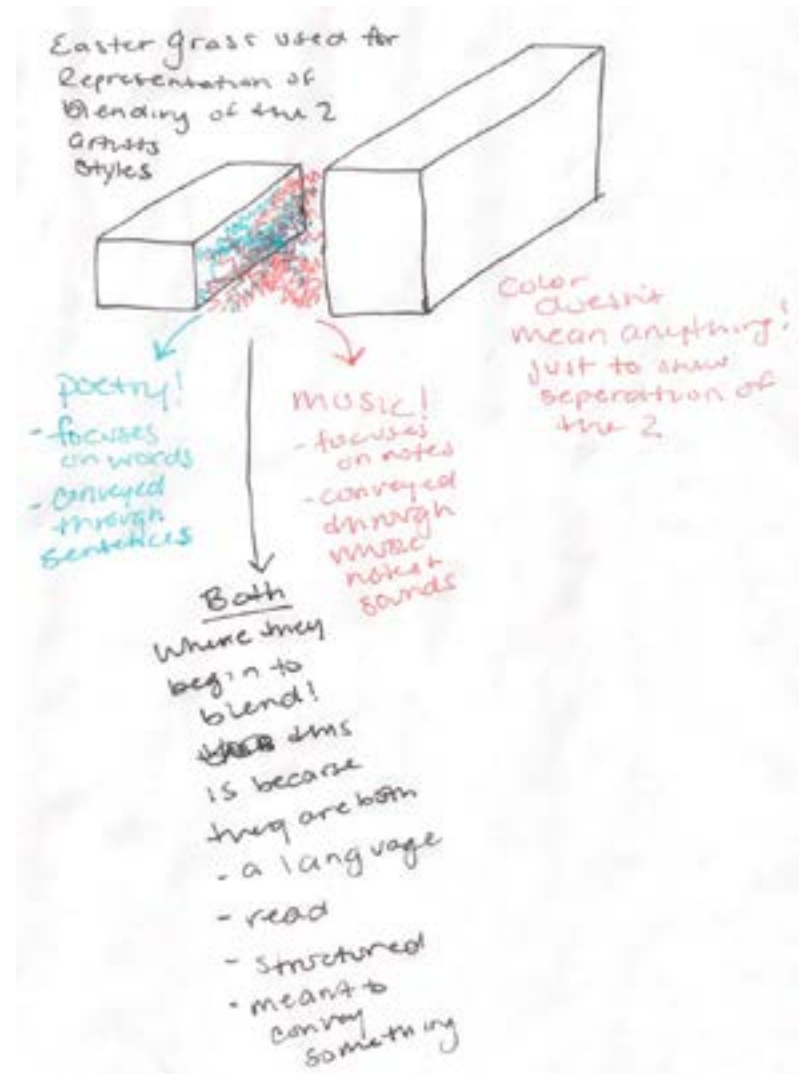
Trial 2: 20 pieces of pink
20 pieces of blue



Trial 3: 60 pieces of pink
60 pieces of blue



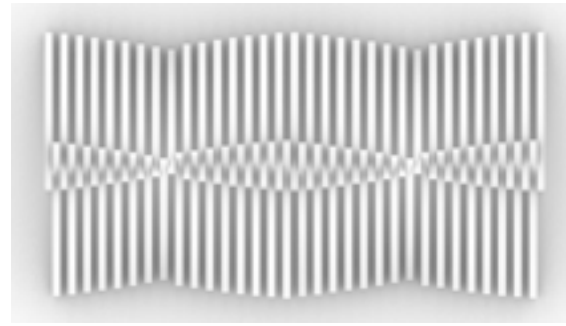
Trial 4: 20 pieces of pink
20 pieces of blue



Front View



Top View



Right View



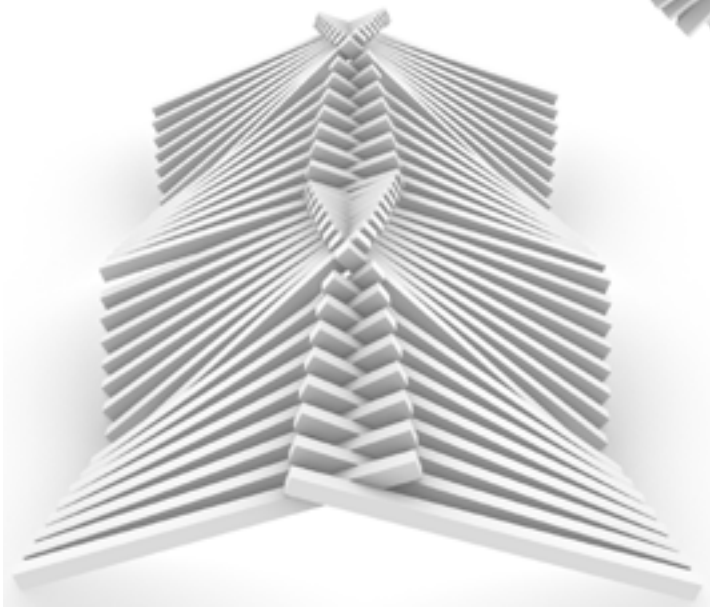
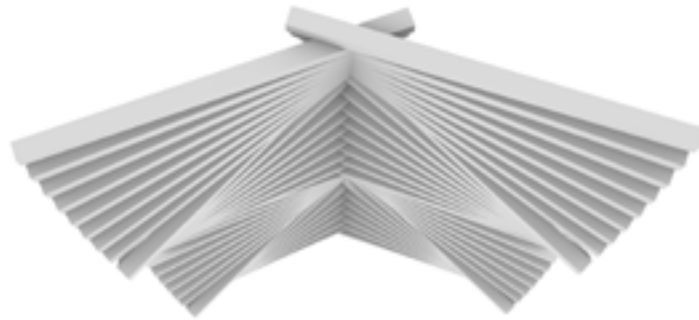
Front View



Top View

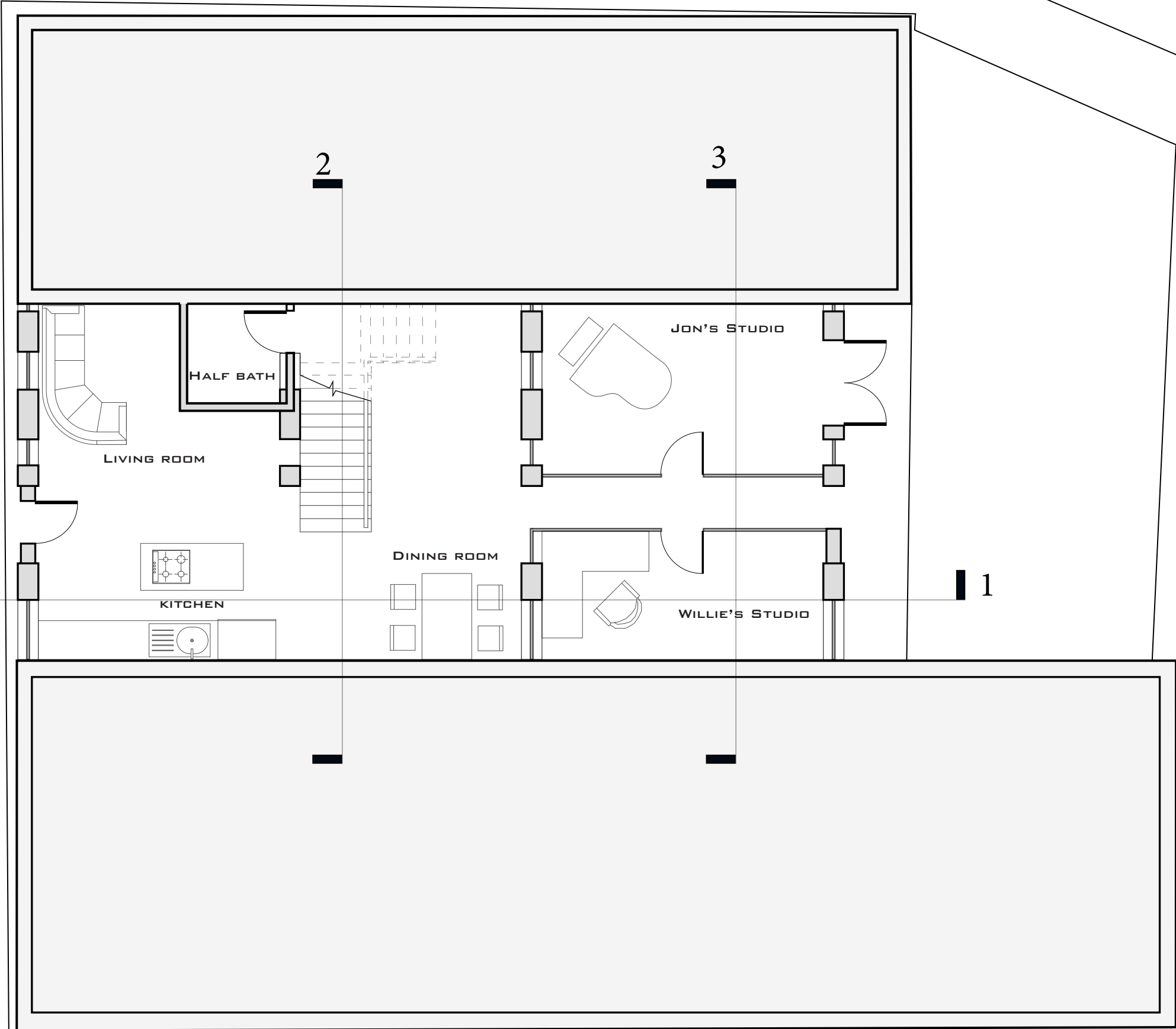


Right View



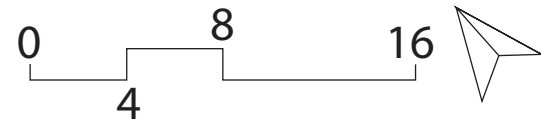
EUSTIS STREET

WASHINGTON STREET



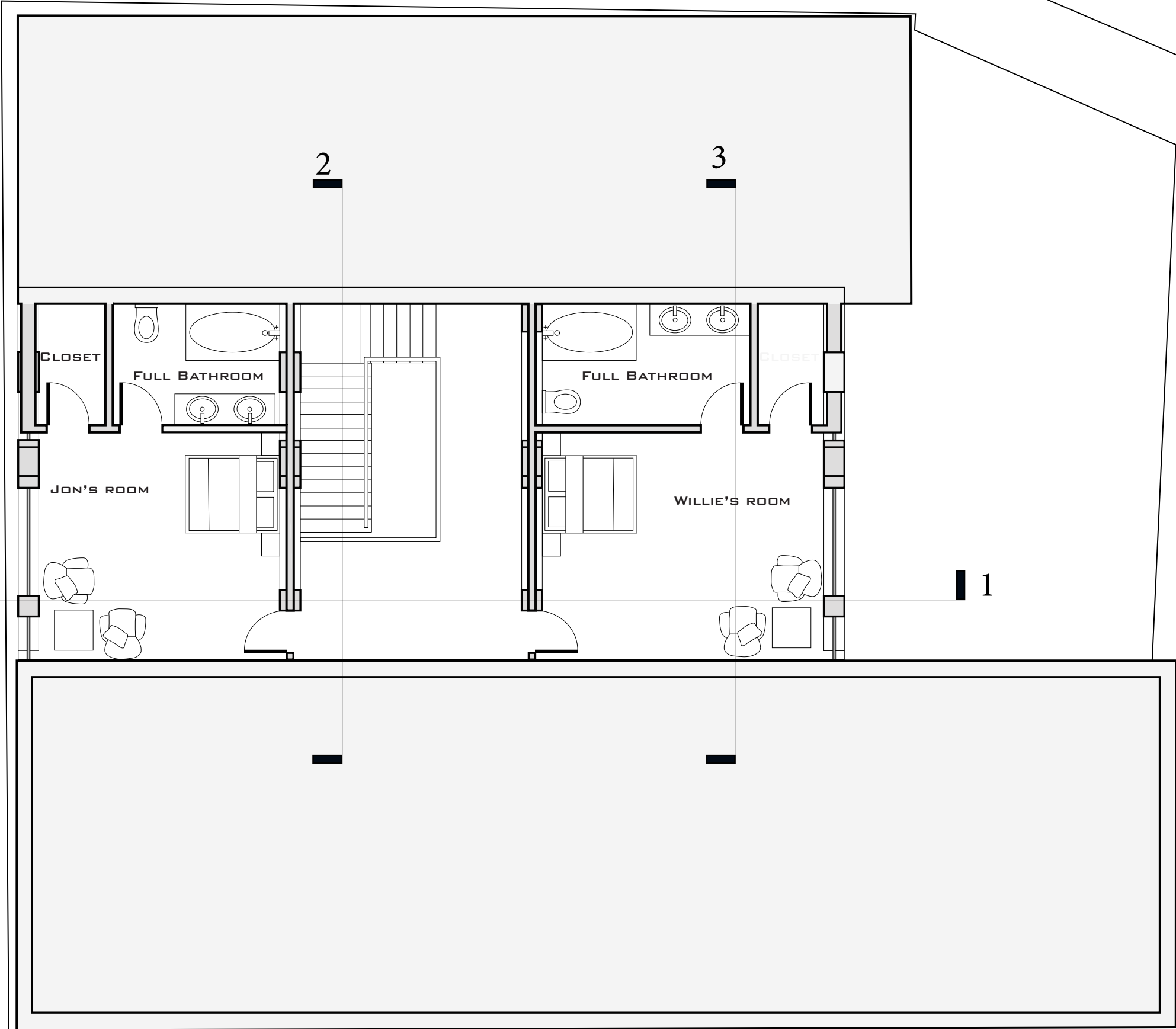
FIRST FLOOR

B



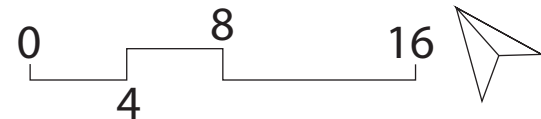
EUSTIS STREET

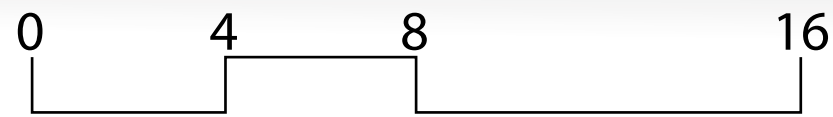
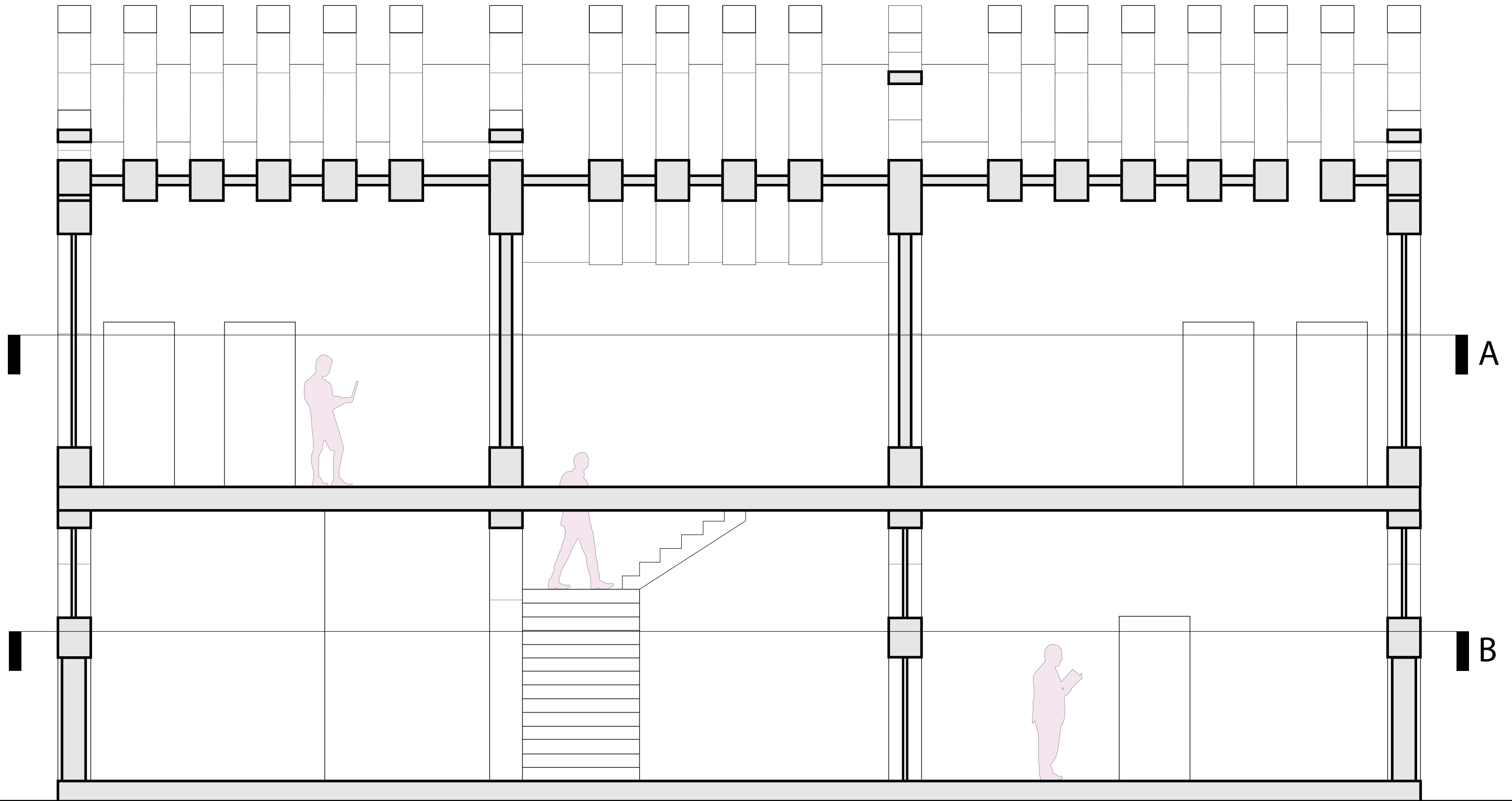
WASHINGTON STREET



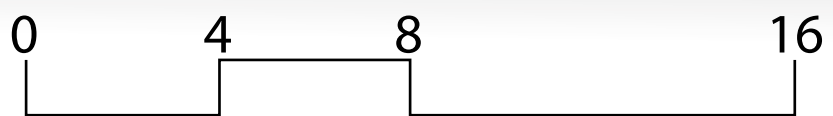
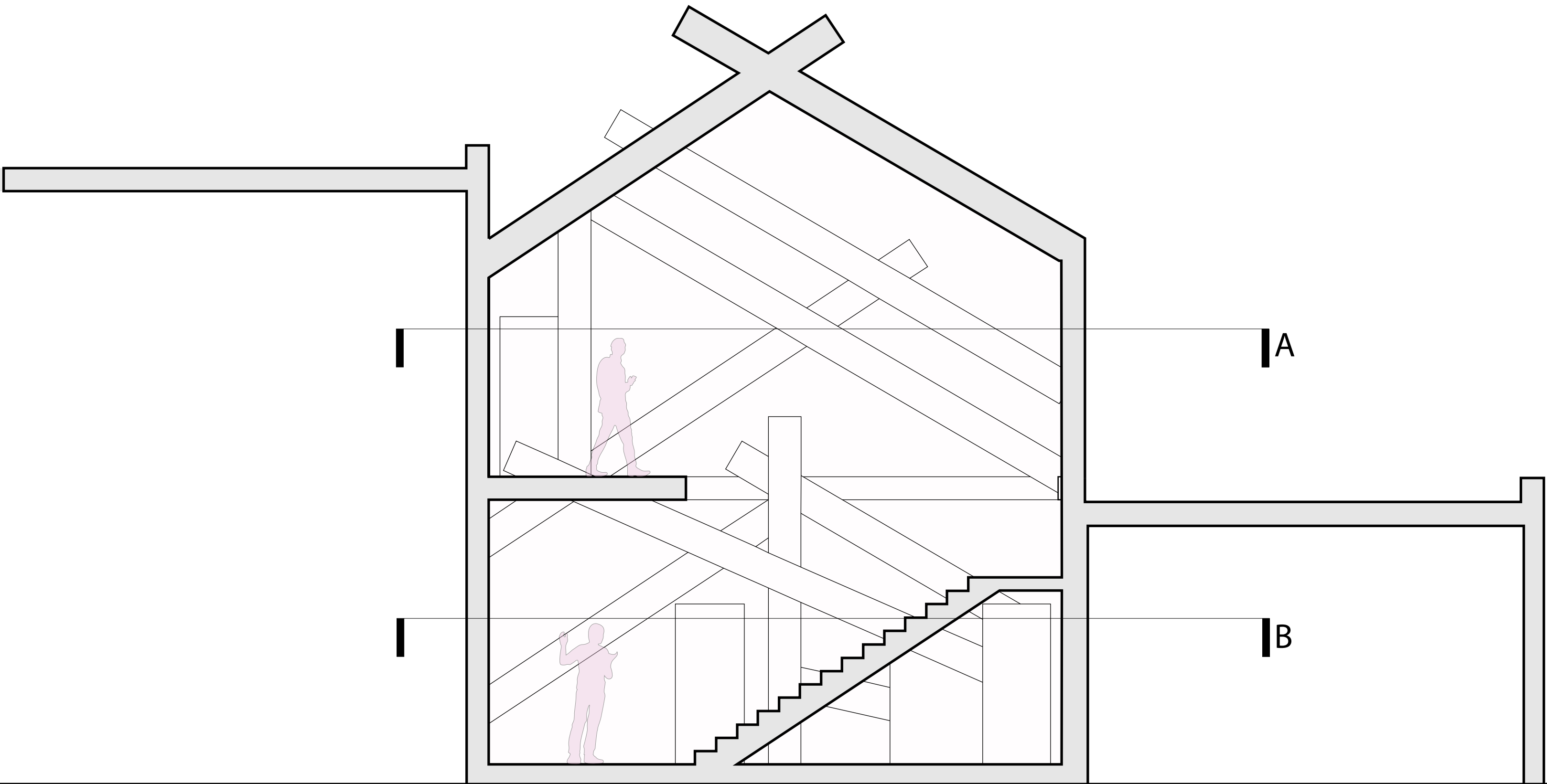
SECOND FLOOR

A

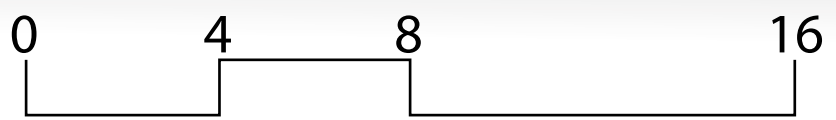
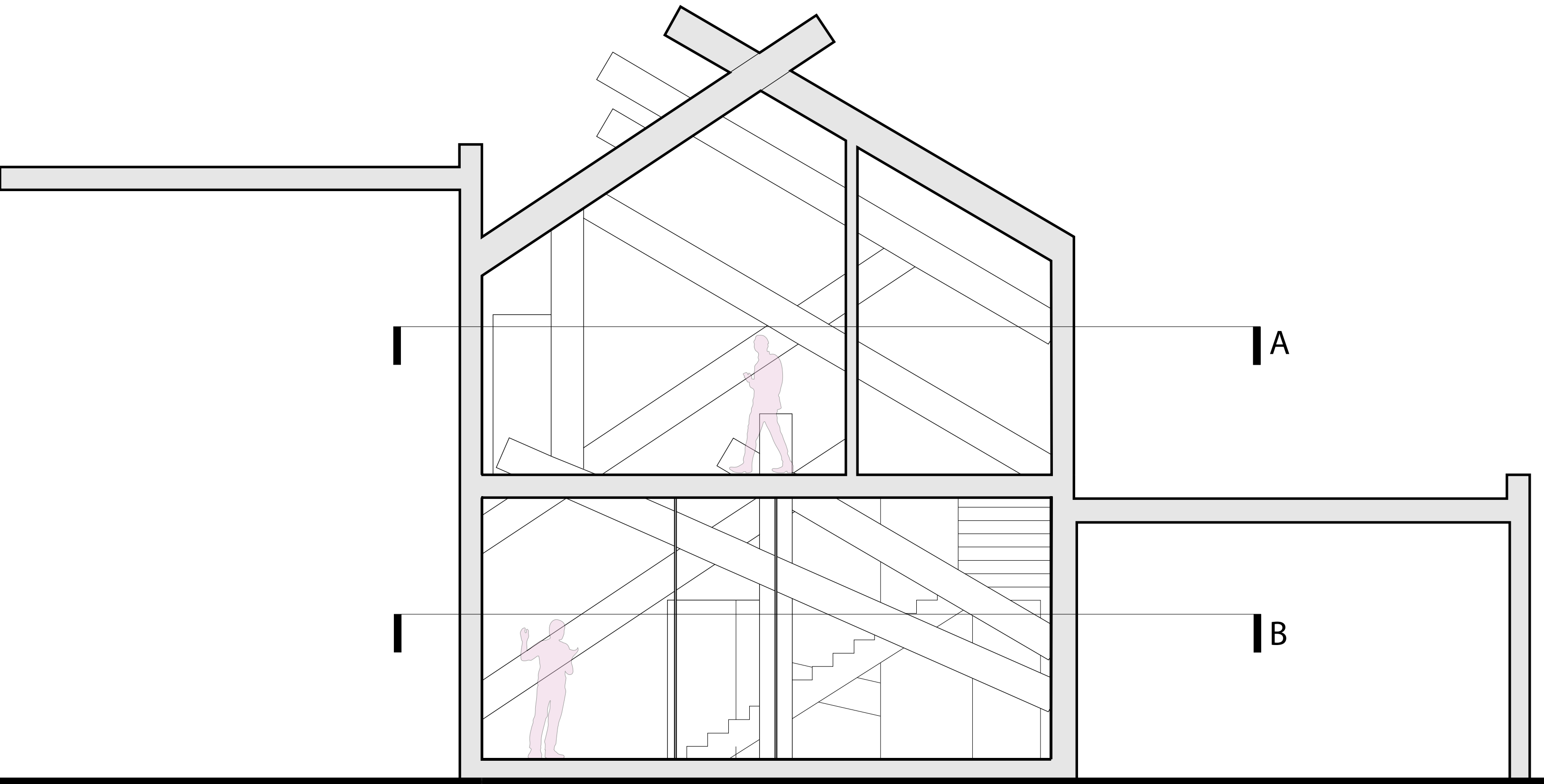




SECTION 1

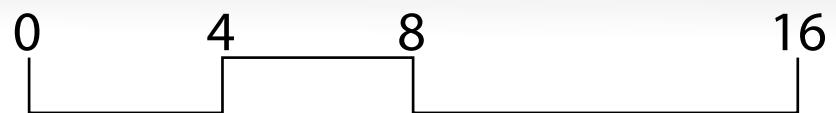
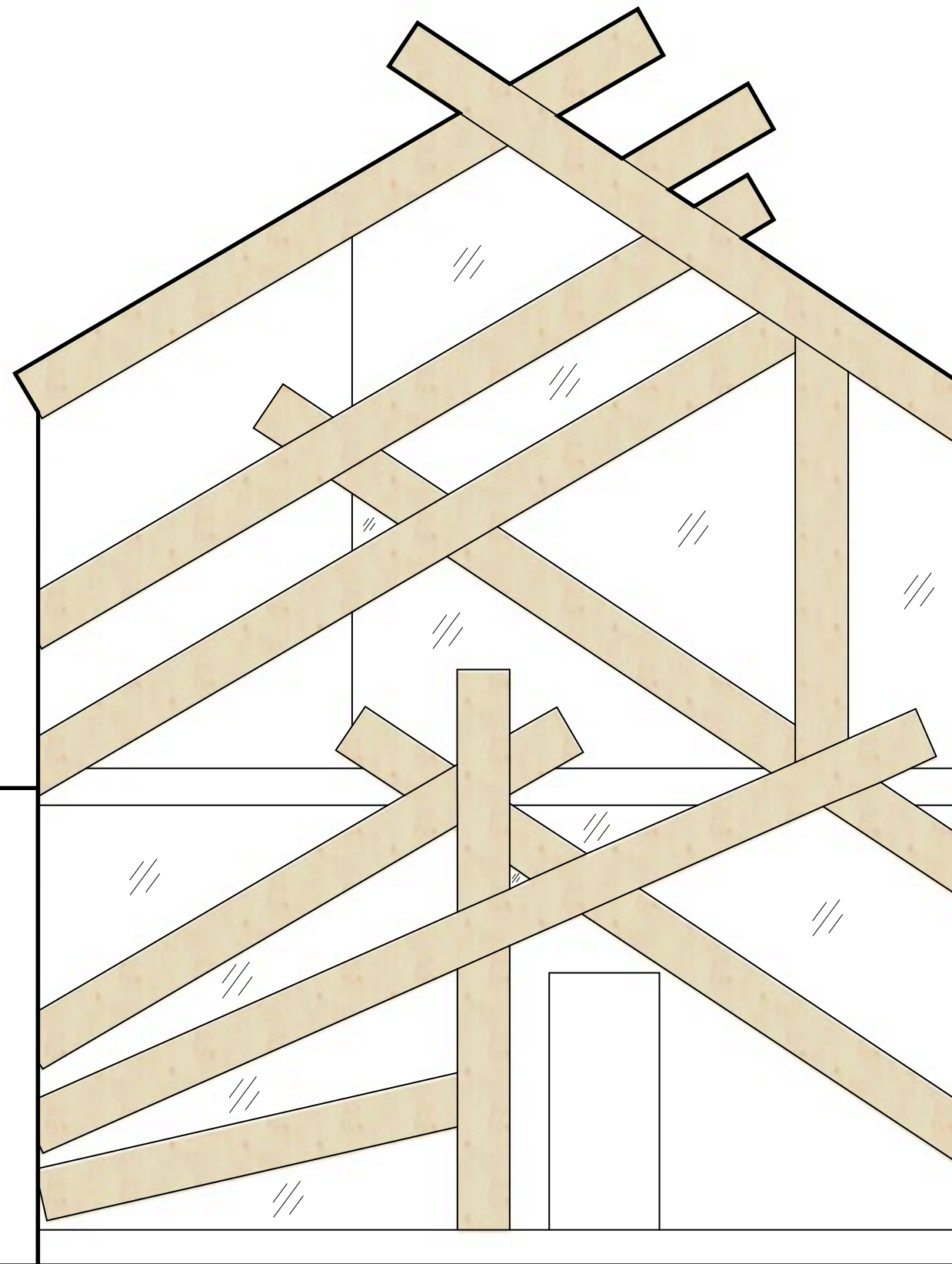


SECTION 2



SECTION 3

NORTHWEST
ELEVATION



SOUTHEAST
ELEVATION

