

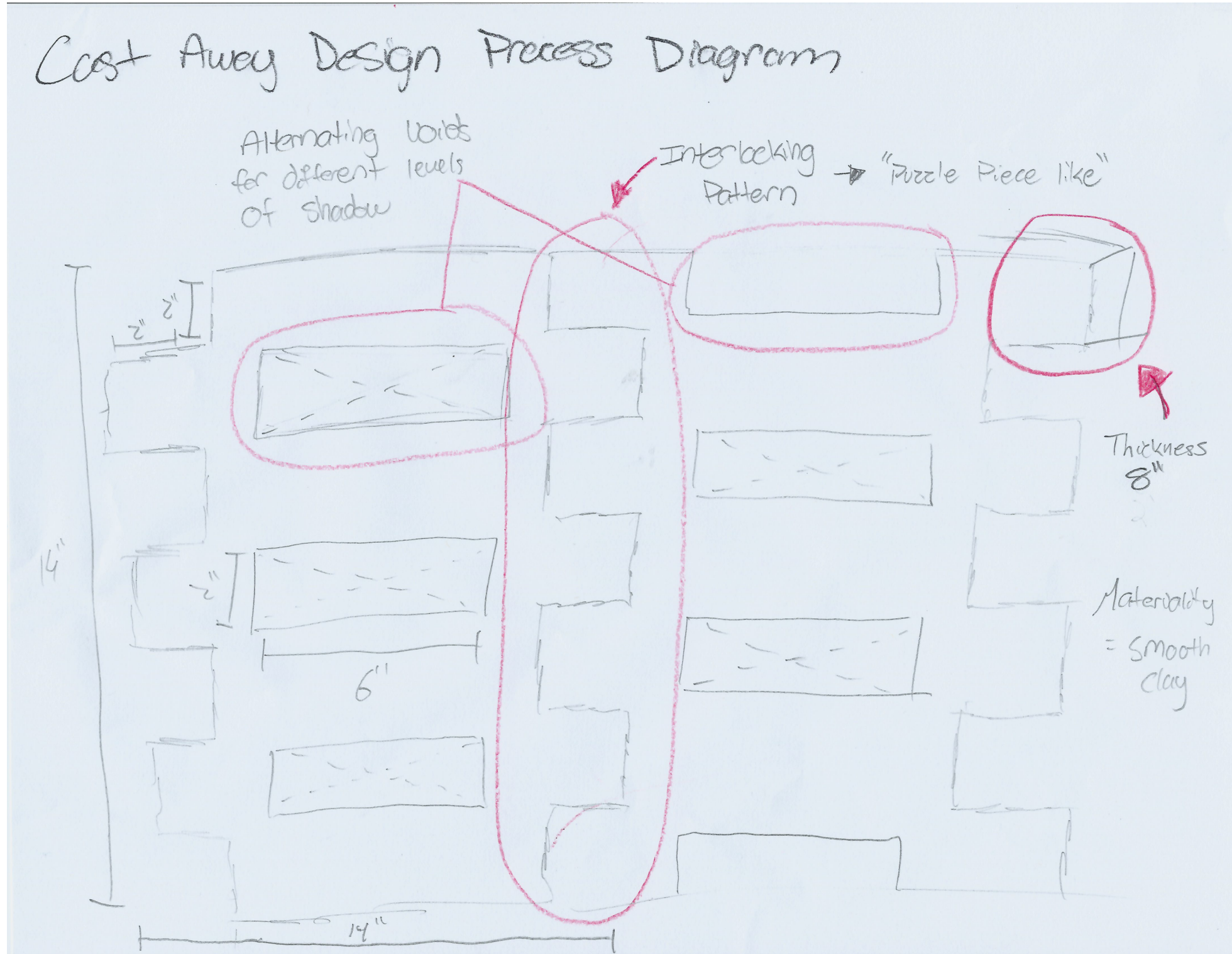
Design Assignment 2.2: CAST AWAY
Inspirations: Wood Log House



Design Assignment 2.2: CAST AWAY
Inspirations: Wood Log House

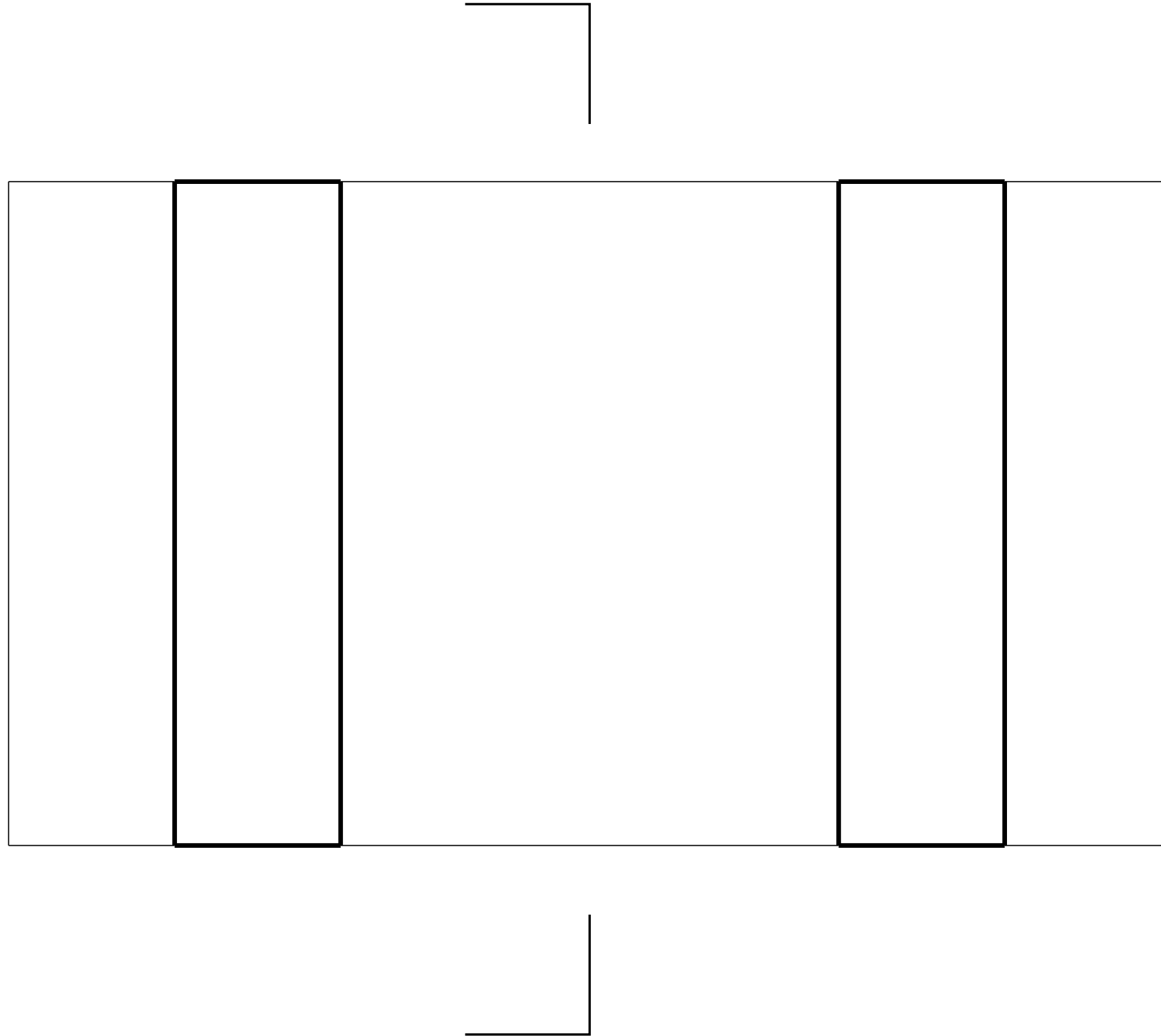


Design Assignment 2.2: CAST AWAY Process Diagram

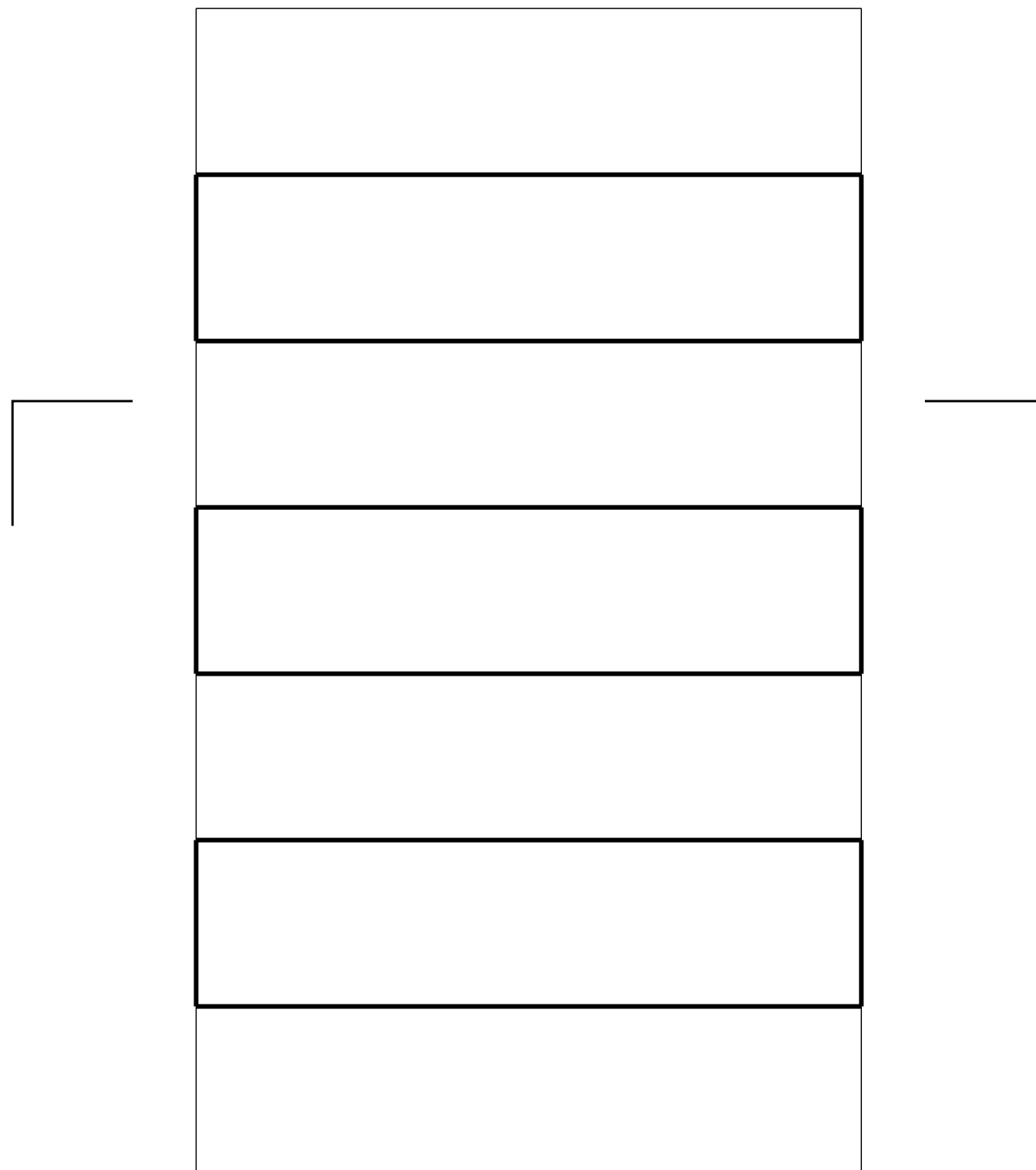


After analyzing our inspiration for the assignment, our group decided to make our own version. In the process diagram illustrated, you can see that we decided to go with a simple design that resembles a puzzle piece with an interlocking pattern. We also incorporated alternating voids within the two different pieces to allow for different levels of shadow.

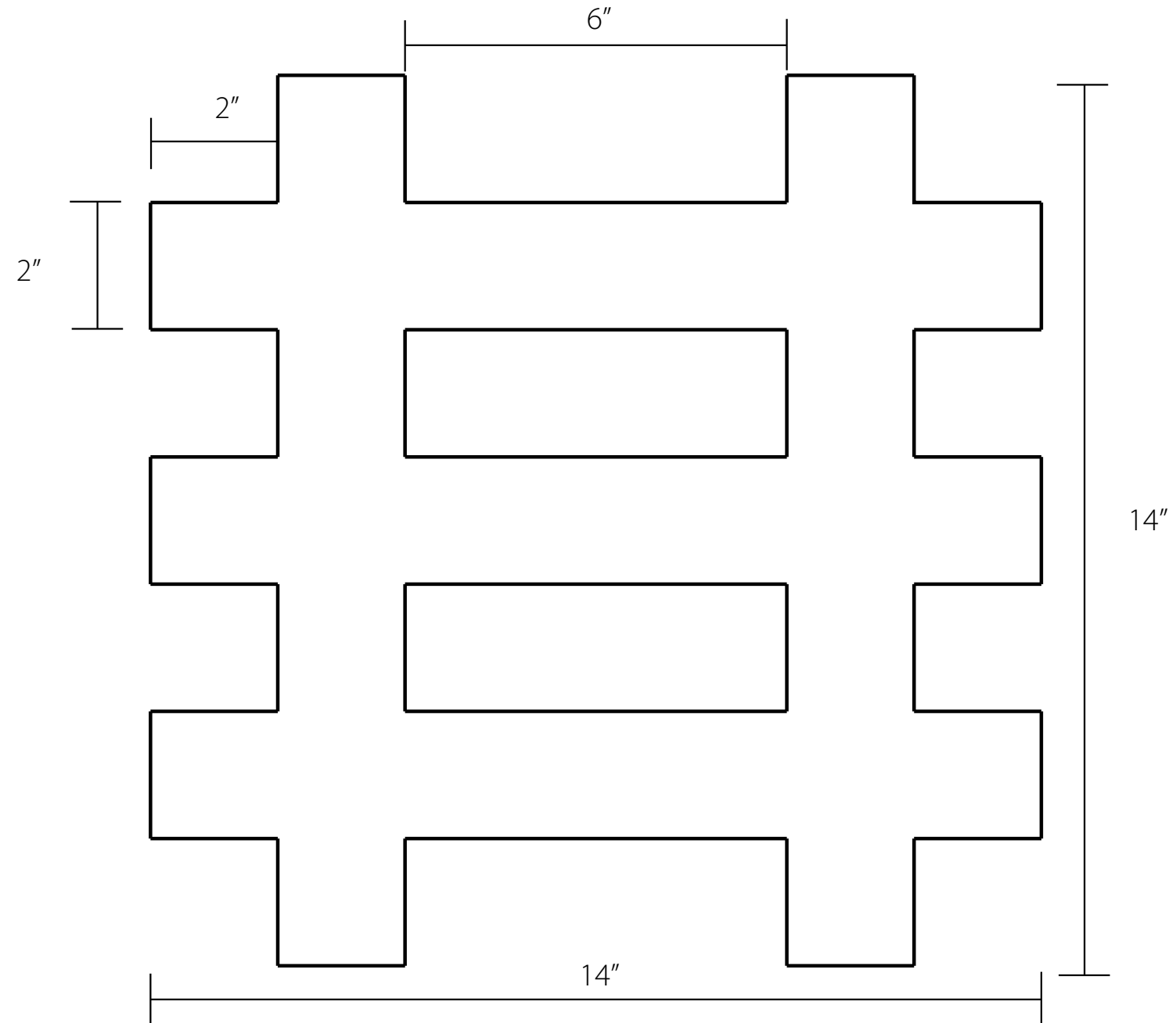
Design Assignment 2.2: CAST AWAY
Plan



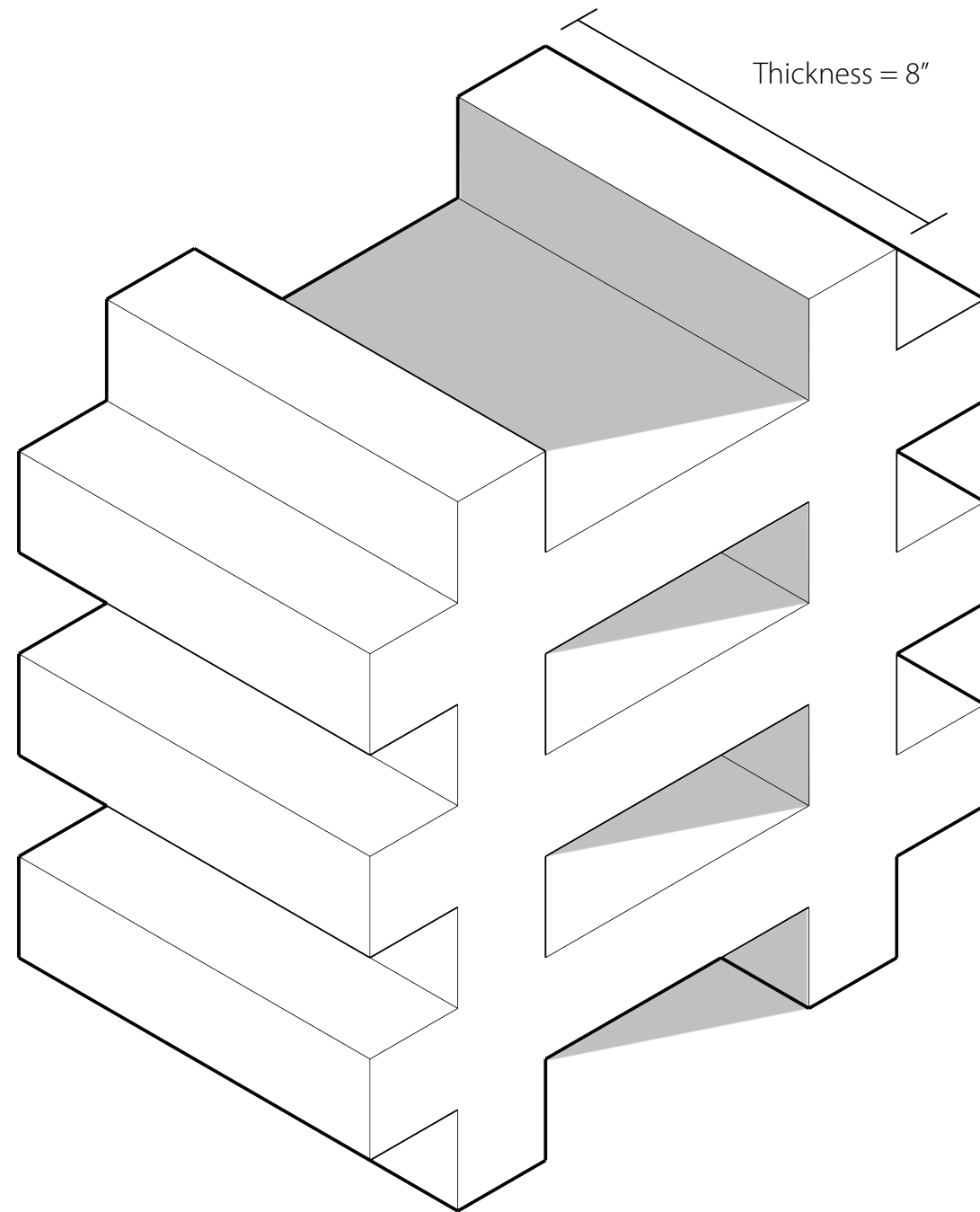
Design Assignment 2.2: CAST AWAY
Section



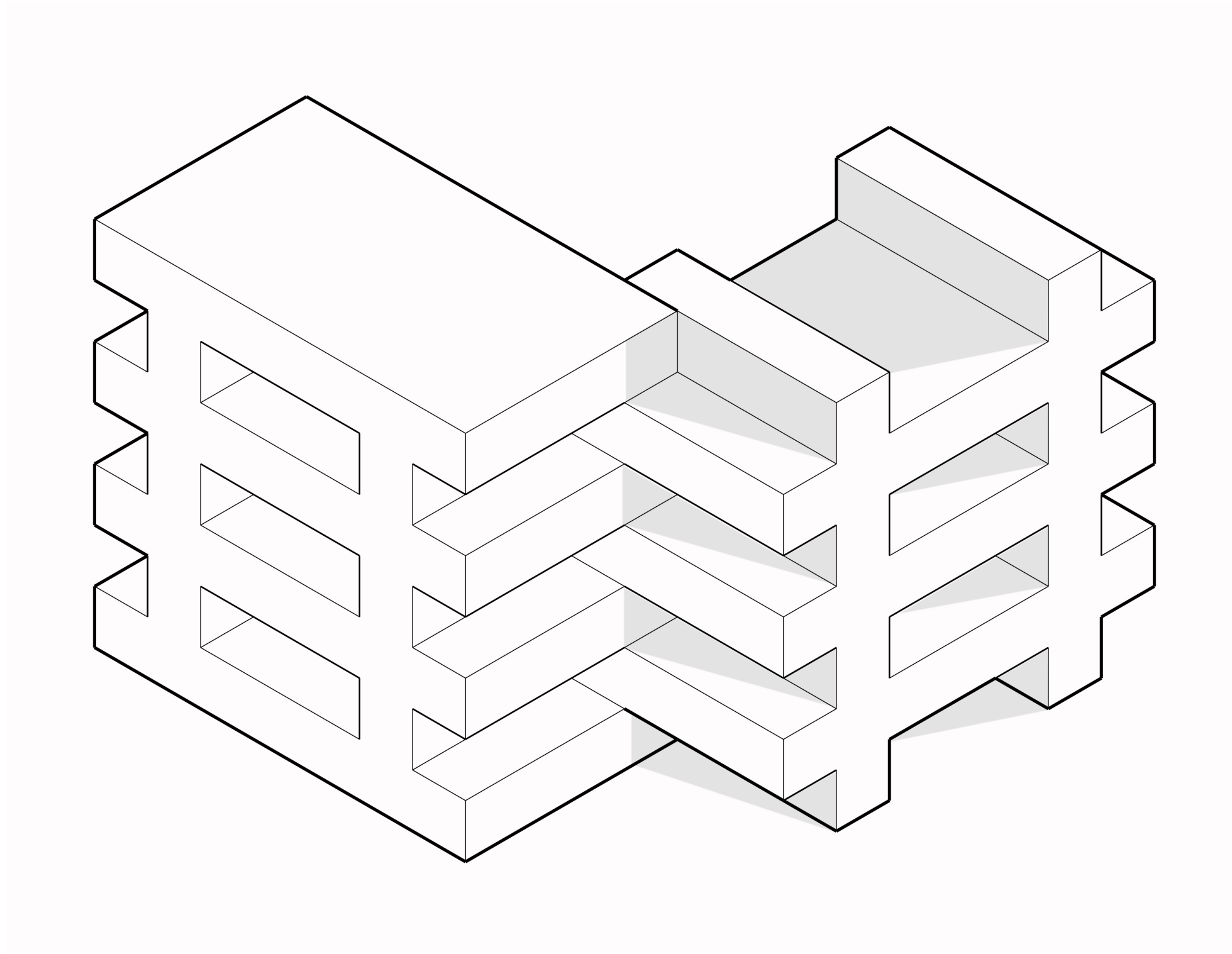
Design Assignment 2.2: CAST AWAY
Elevation



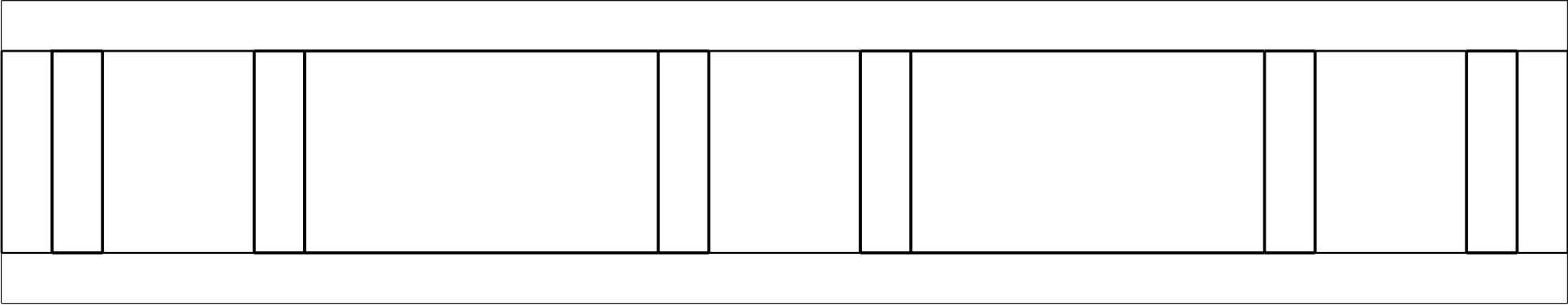
Design Assignment 2.2: CAST AWAY
Axonometric View



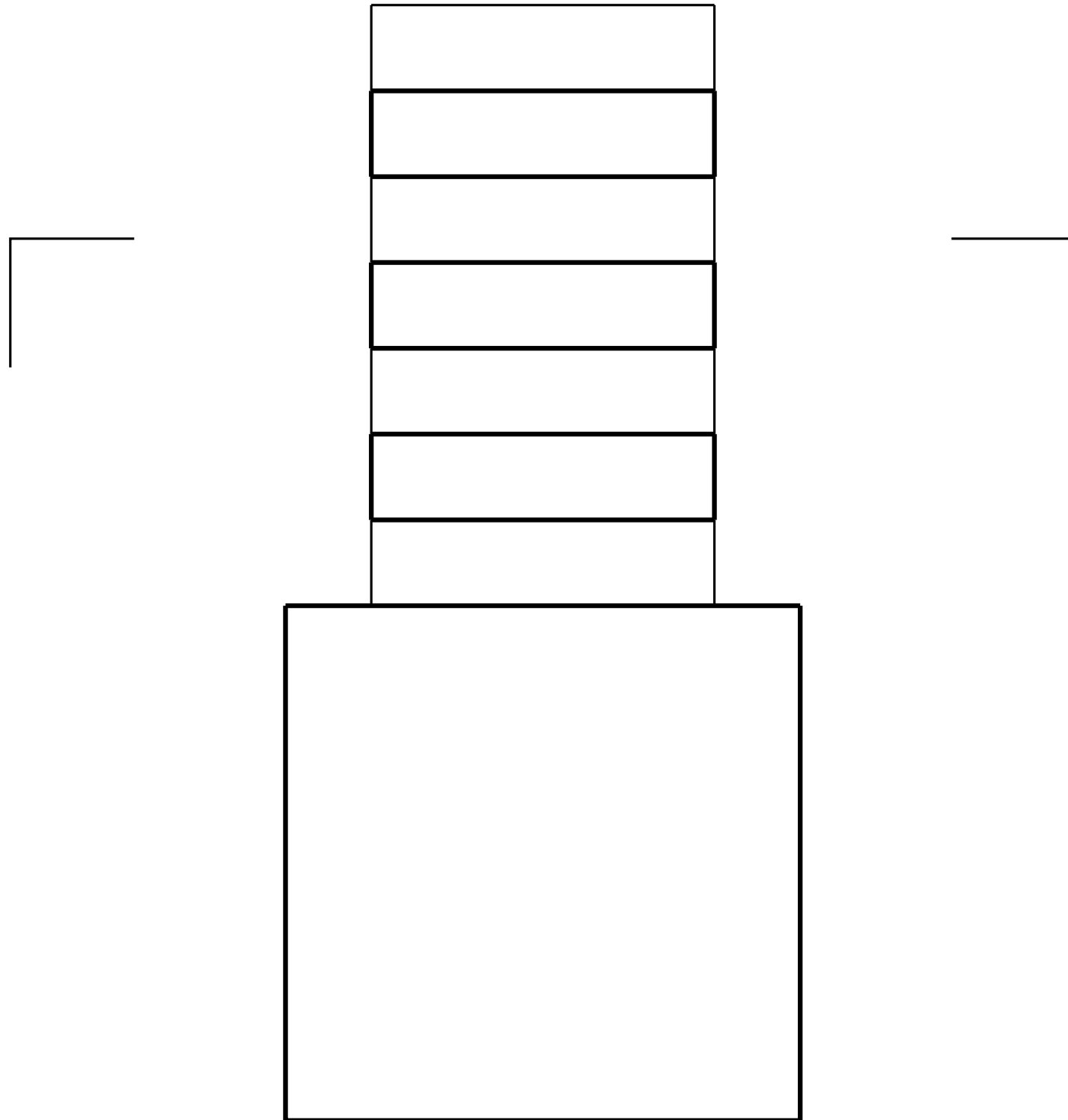
Design Assignment 2.2: CAST AWAY
Axonometric View: Tuning a Corner



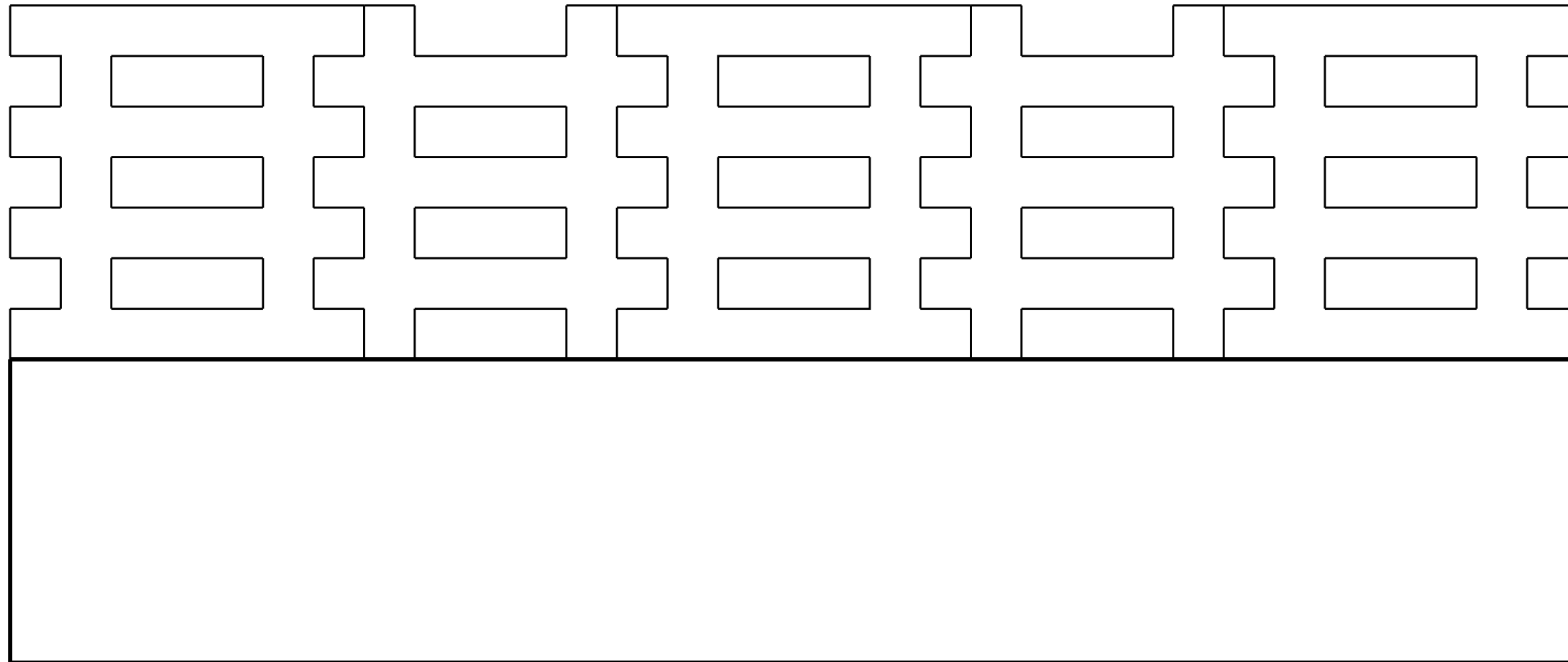
Design Assignment 2.2: CAST AWAY
Plan



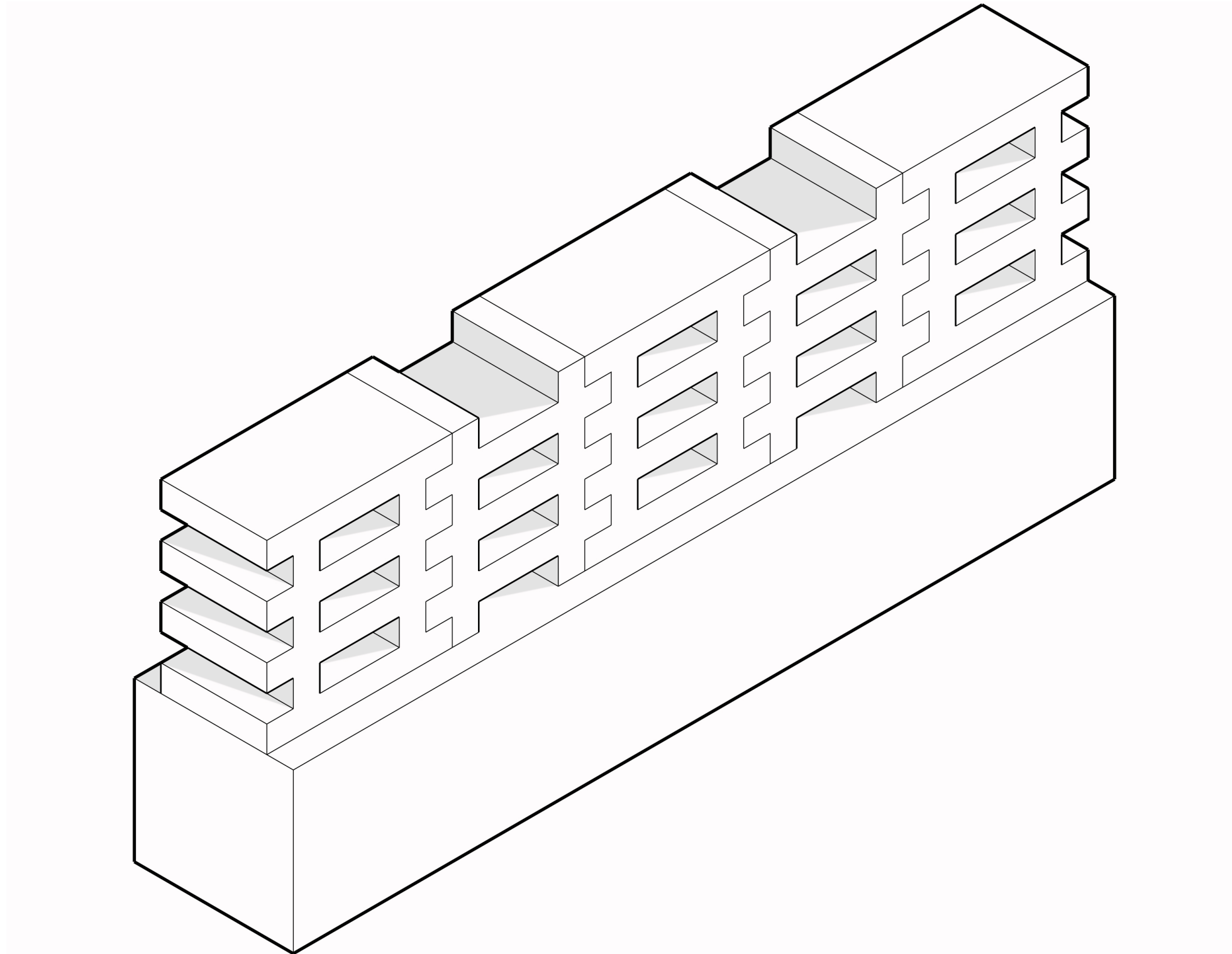
Design Assignment 2.2: CAST AWAY
Section



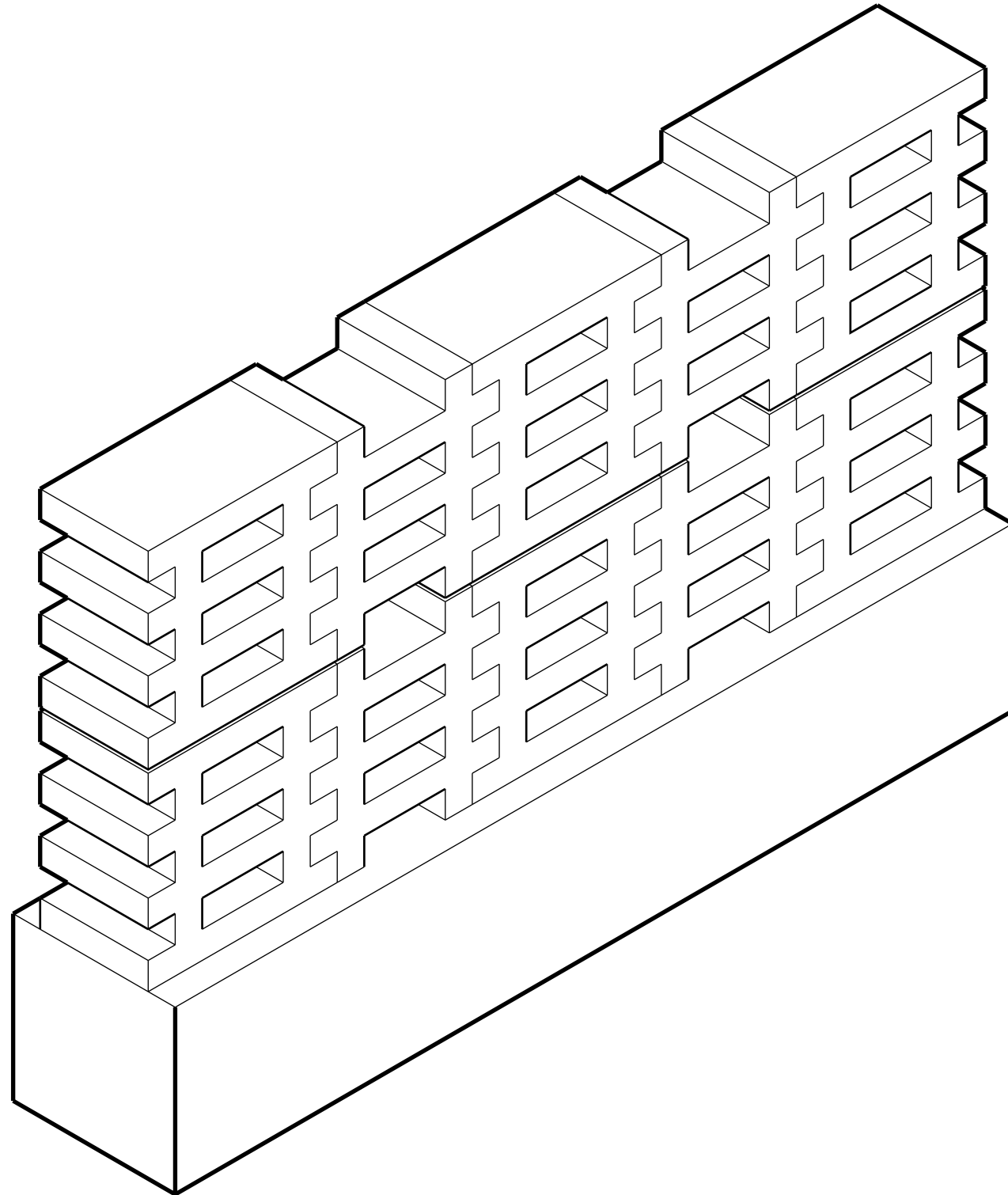
Design Assignment 2.2: CAST AWAY
Elevation



Design Assignment 2.2: CAST AWAY
Axonometric View

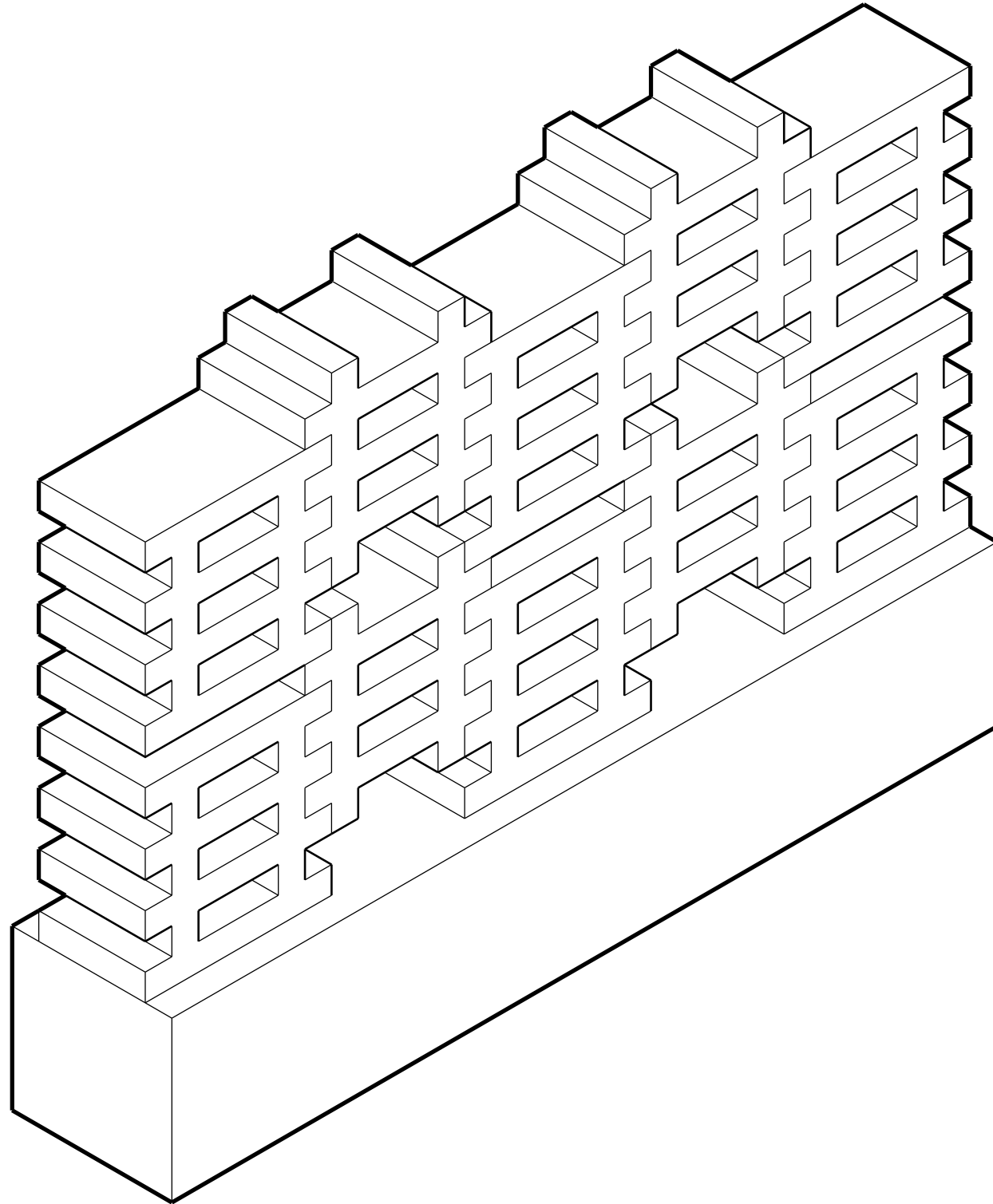


Design Assignment 2.2: CAST AWAY
Axonometric View



This stacking method is a standard orientation in which each horizontal layer is placed on top of each other vertically.

Design Assignment 2.2: CAST AWAY
Axonometric View



This stacking method strides away from the typical stack. Using our concept of the puzzle pieces, we have moved various pieces up to create a staggered pattern. In order yo make this stacking method work, corners would need to be added to the ends so that they can be suported.