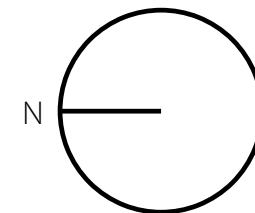
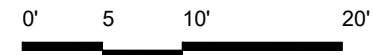
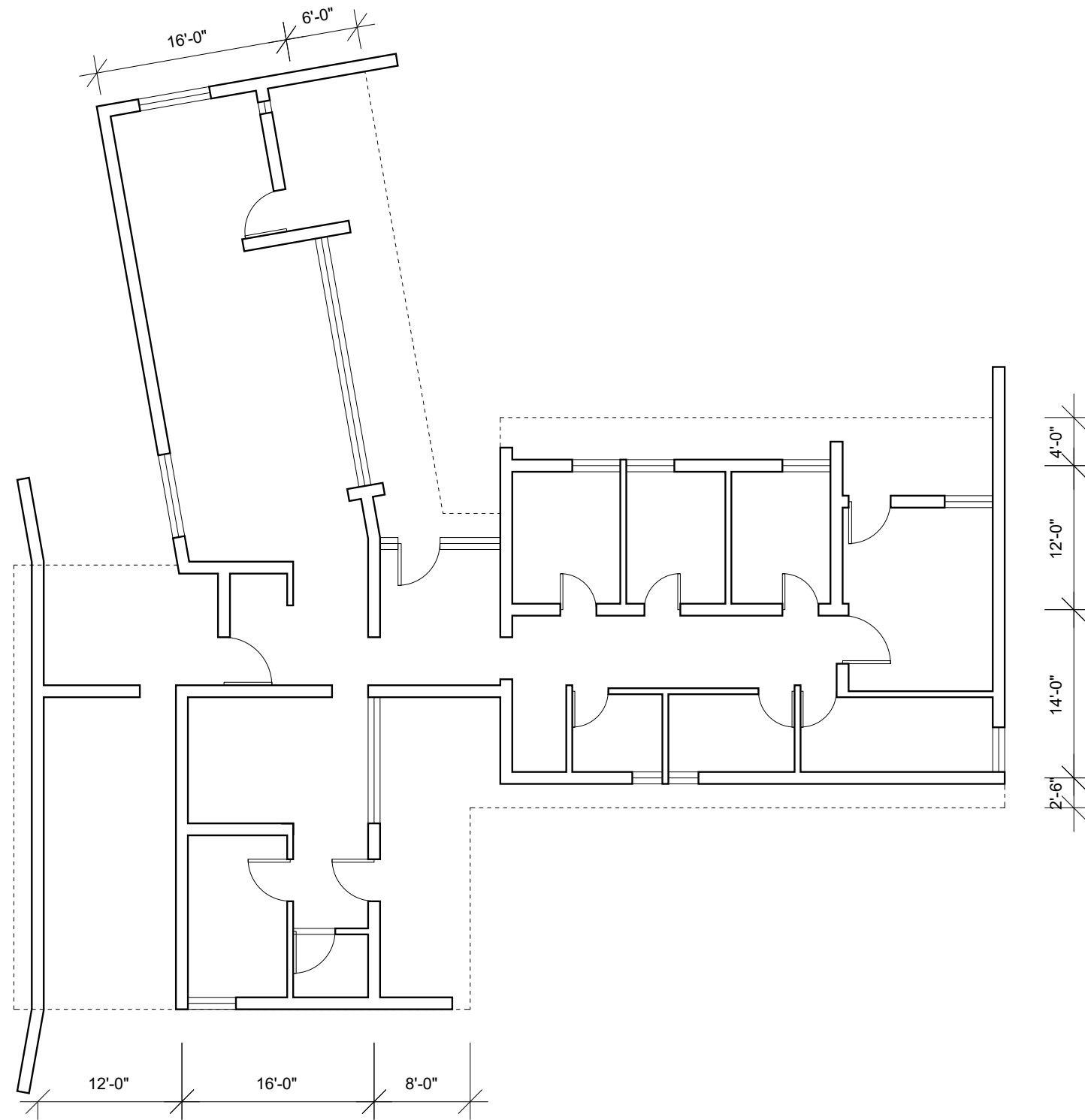


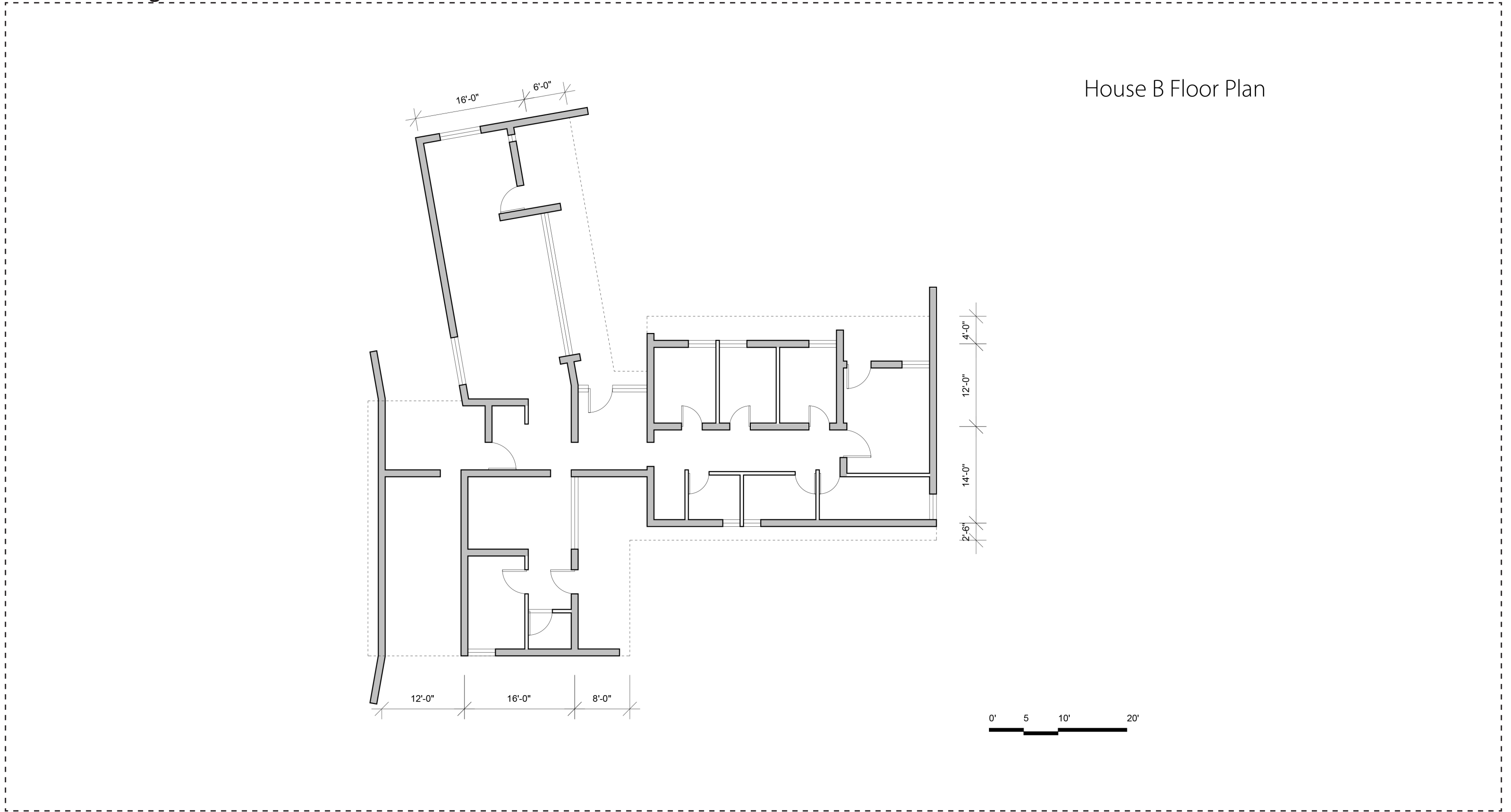
Design Assignment 3.1: FRAMING SPECULATION Floor Plan

House B Floor Plan



Design Assignment 3.1: FRAMING SPECULATION

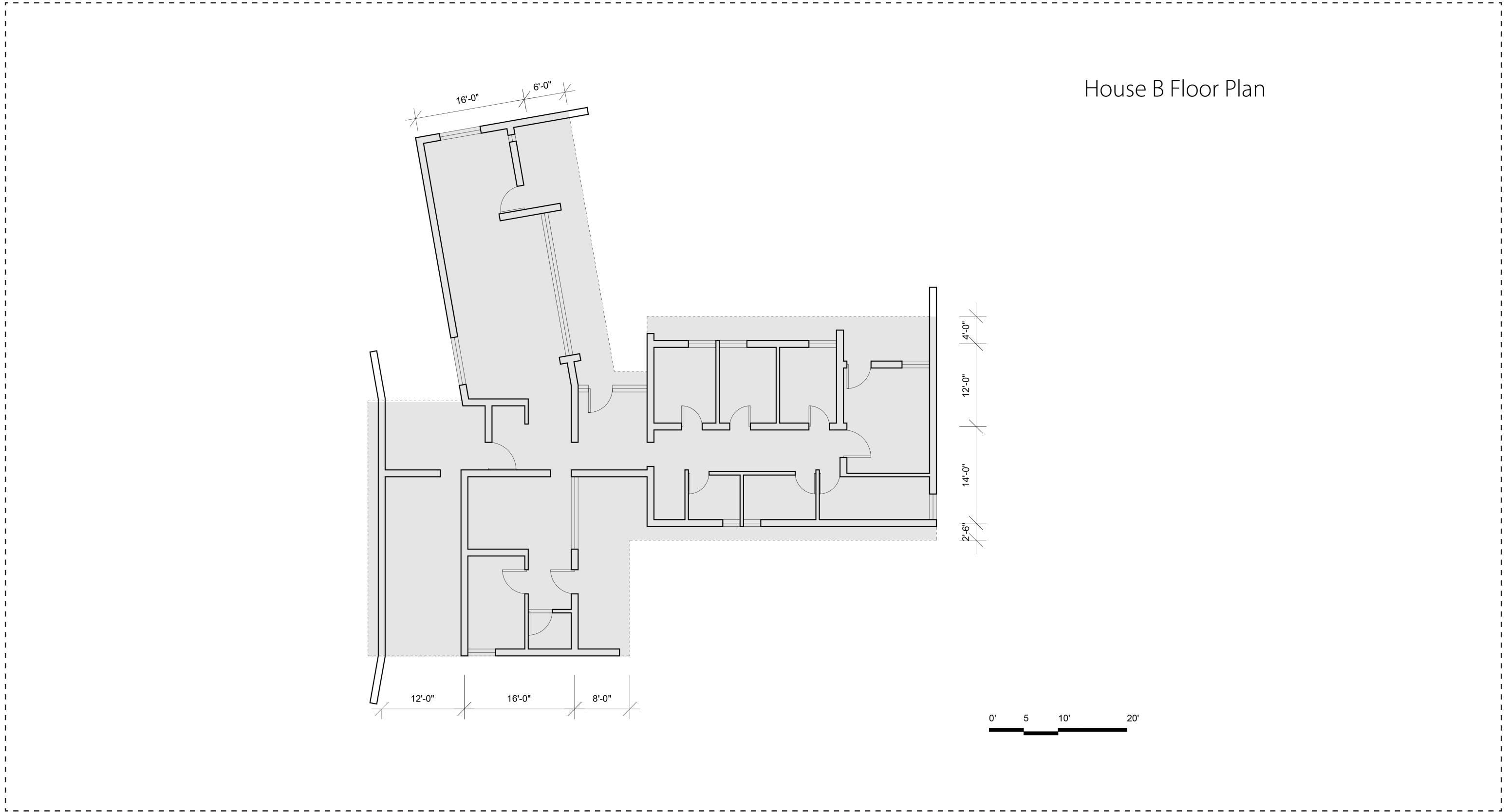
Vertical Bearing



House B Floor Plan

Design Assignment 3.1: FRAMING SPECULATION

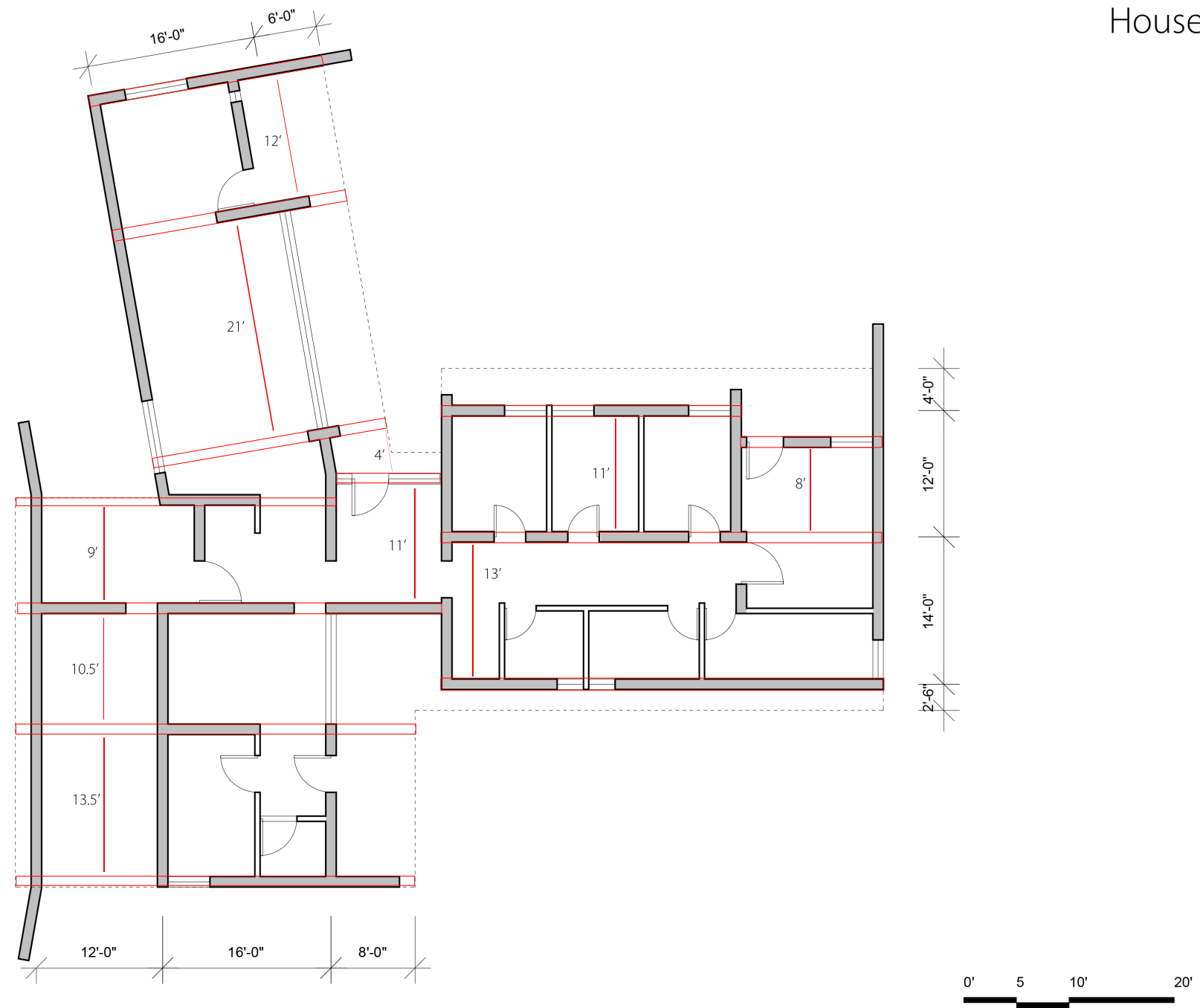
Area to be Framed



House B Floor Plan

Design Assignment 3.1: FRAMING SPECULATION

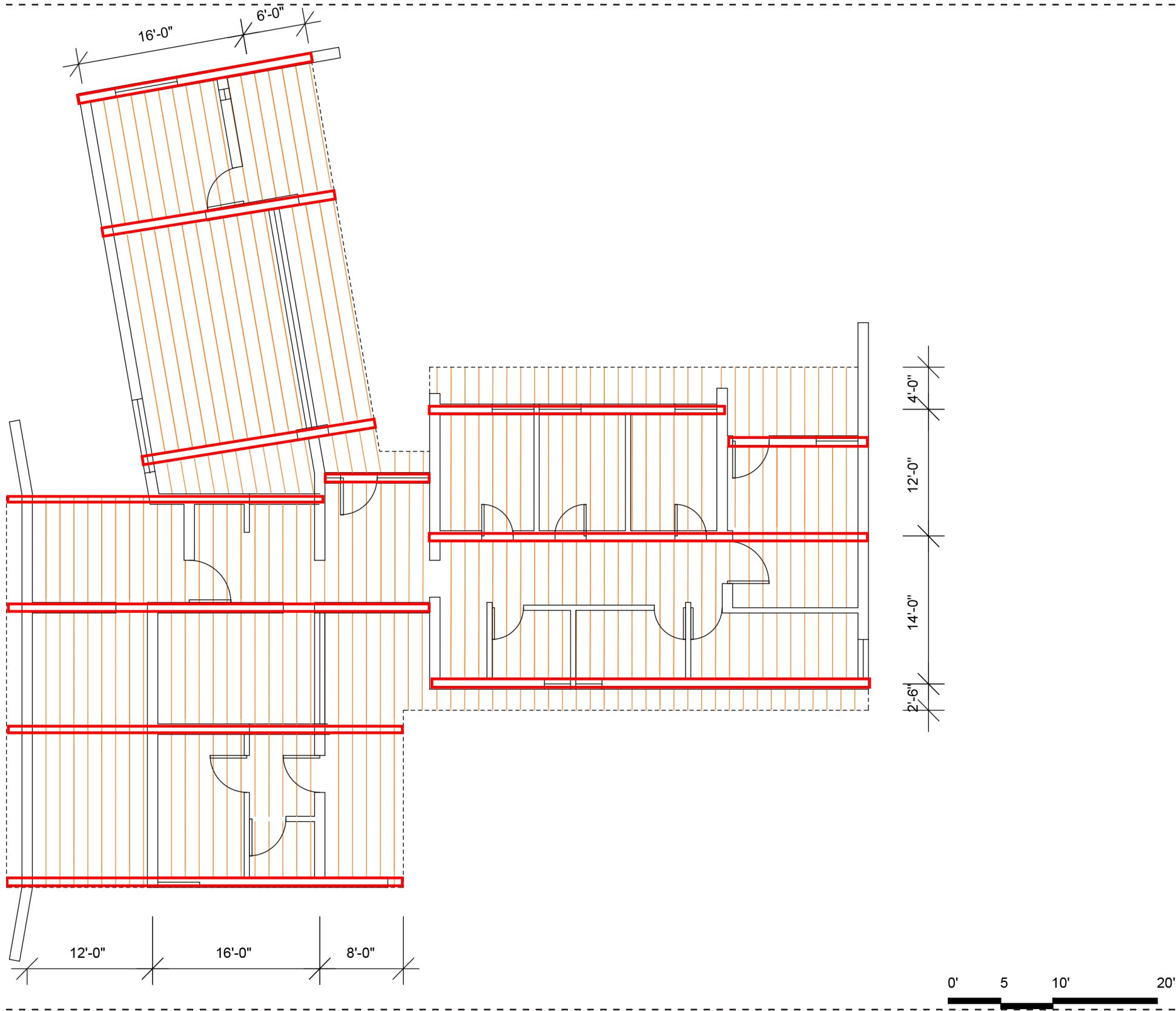
Primary Beams



House B Floor Plan

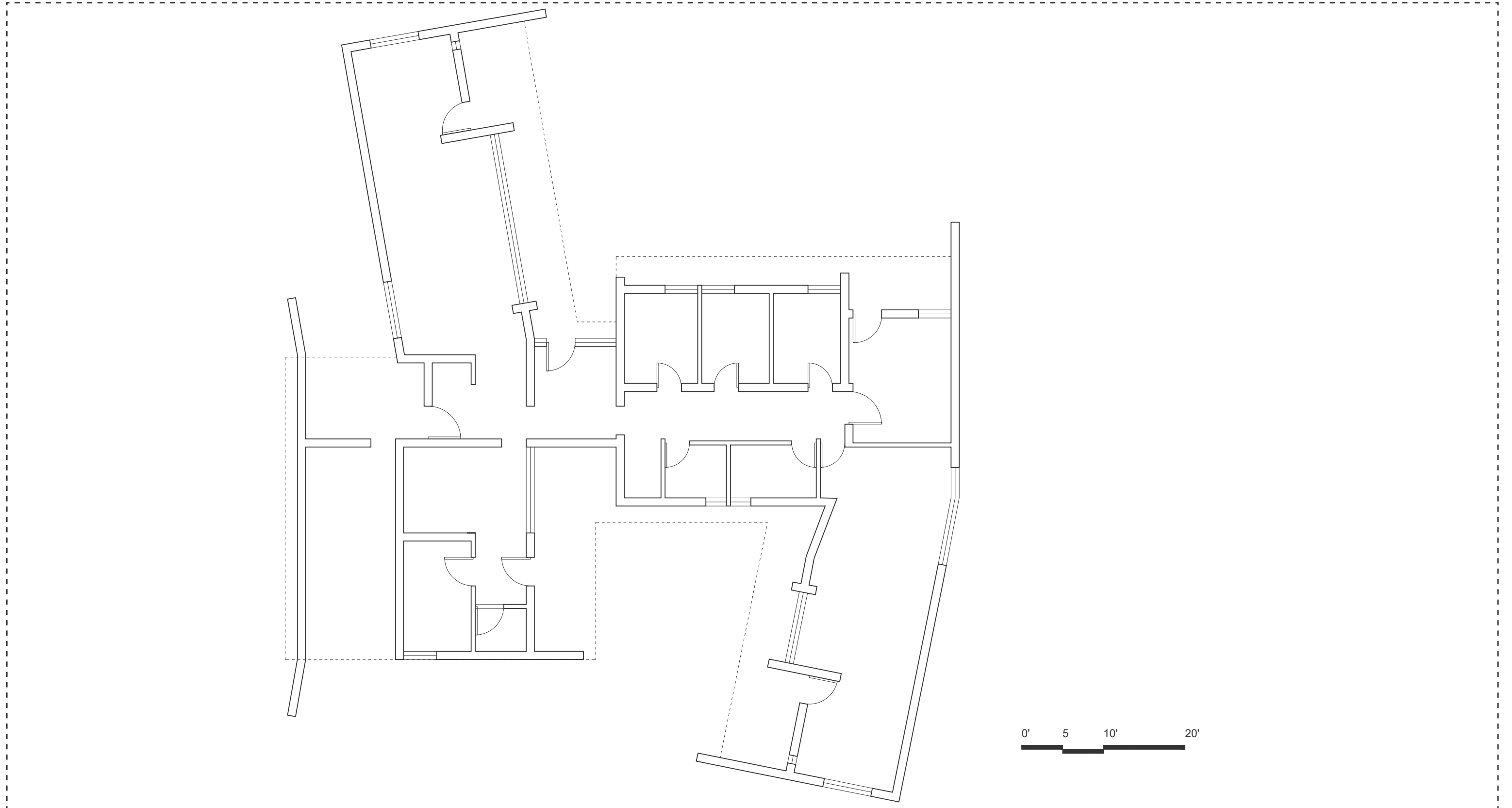
Design Assignment 3.1: FRAMING SPECULATION

Joist (or rafter) Layer



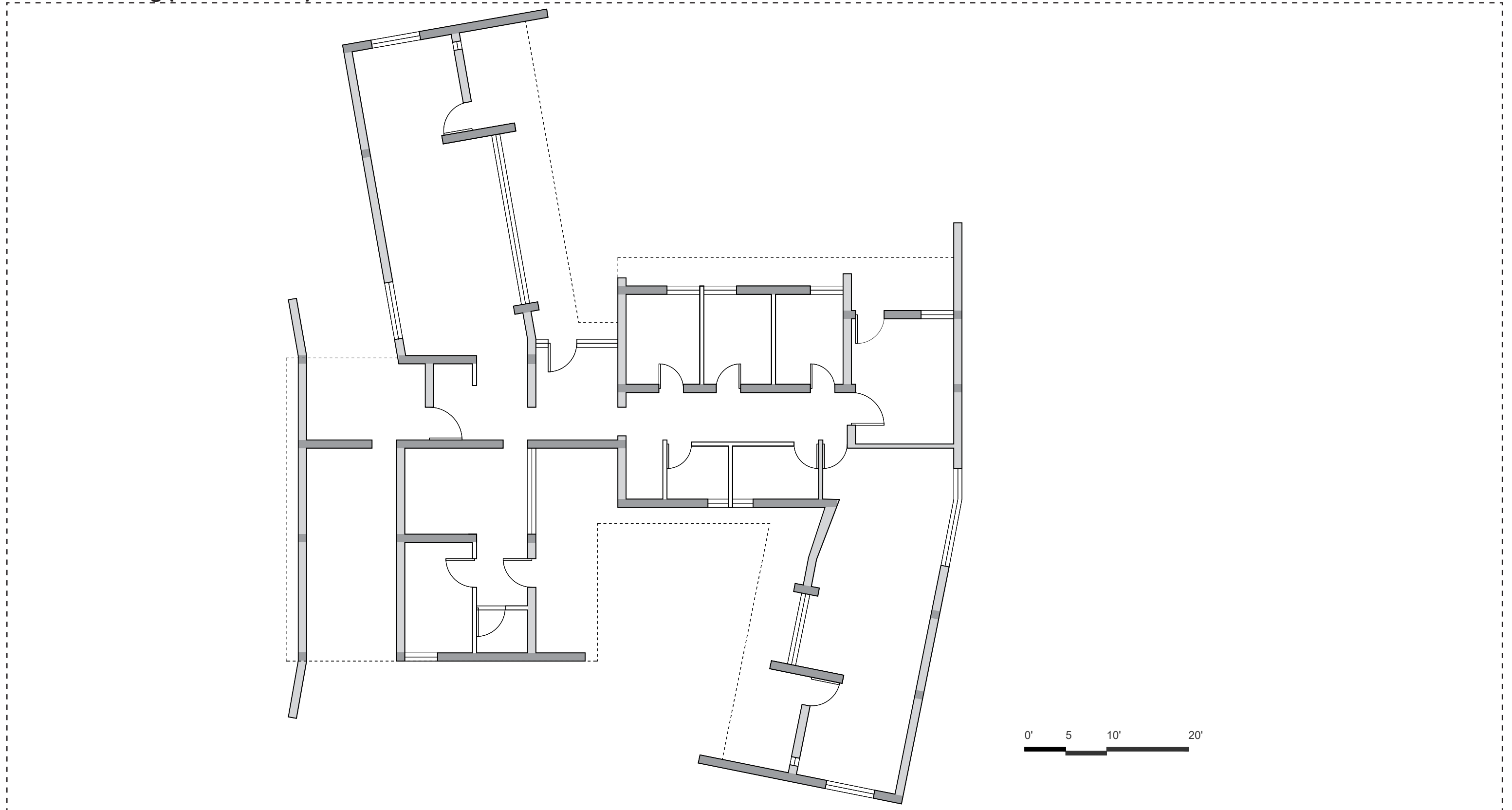
Design Assignment 3.1: FRAMING SPECULATION

Floor Plan with Addition



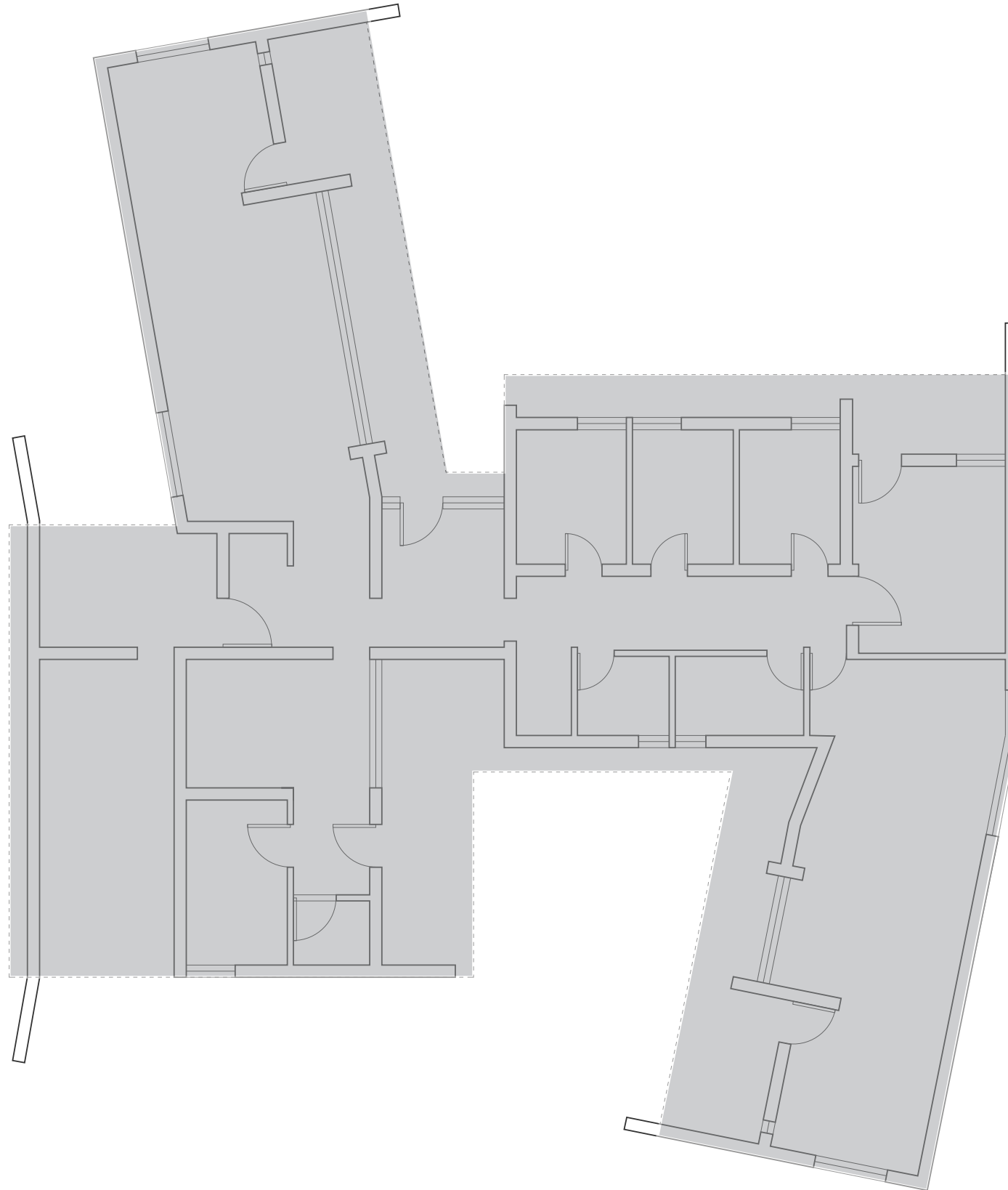
Design Assignment 3.1: FRAMING SPECULATION

Vertical Bearing (with addition)



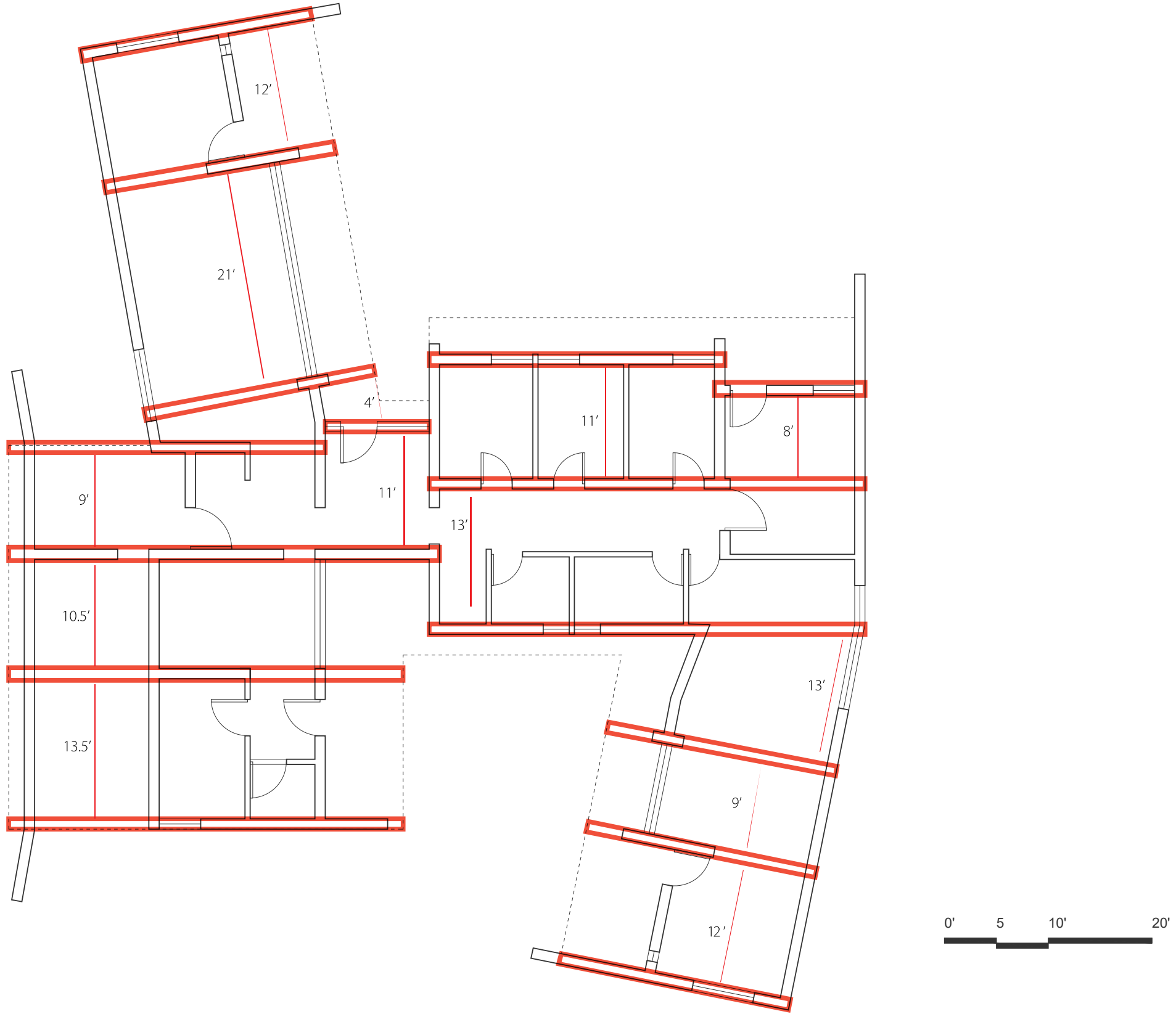
Design Assignment 3.1: FRAMING SPECULATION

Area to be Framed (with addition)



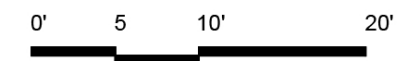
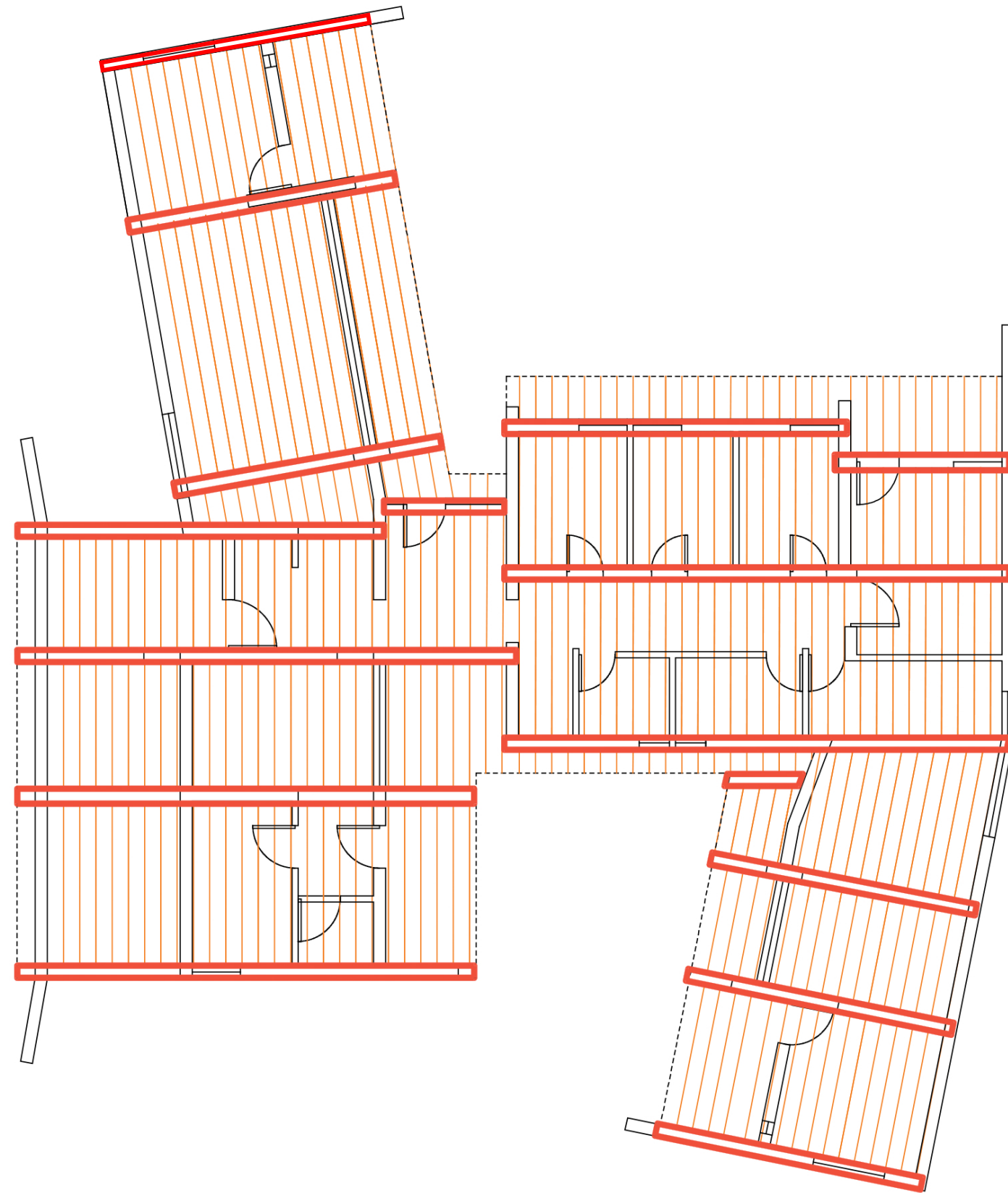
Design Assignment 3.1: FRAMING SPECULATION

Primary Beams (with addition)



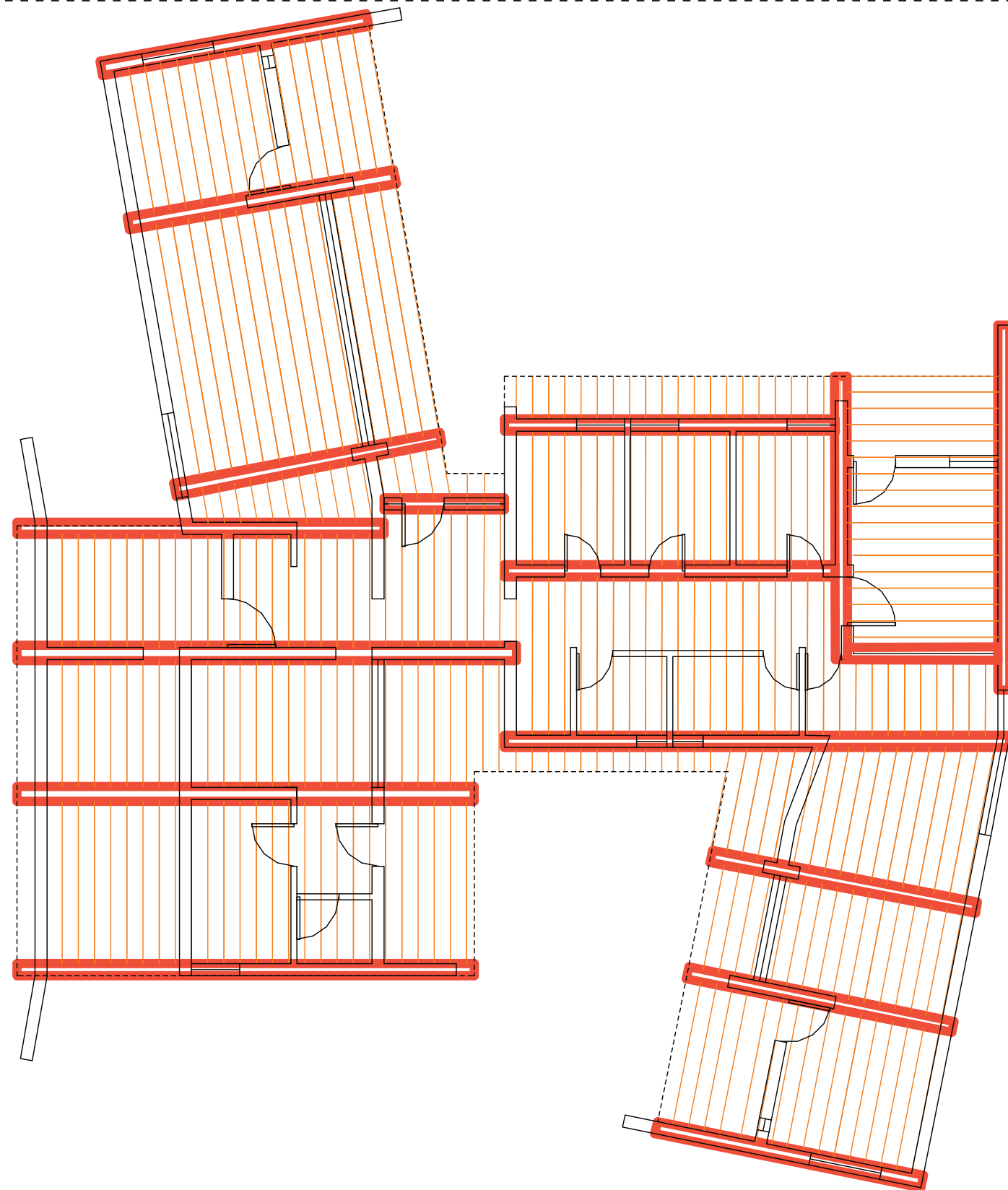
Design Assignment 3.1: FRAMING SPECULATION

Joist (or rafter) Layer (with addition)



Design Assignment 3.1: FRAMING SPECULATION

Alternate Iteration of Beams and Joists

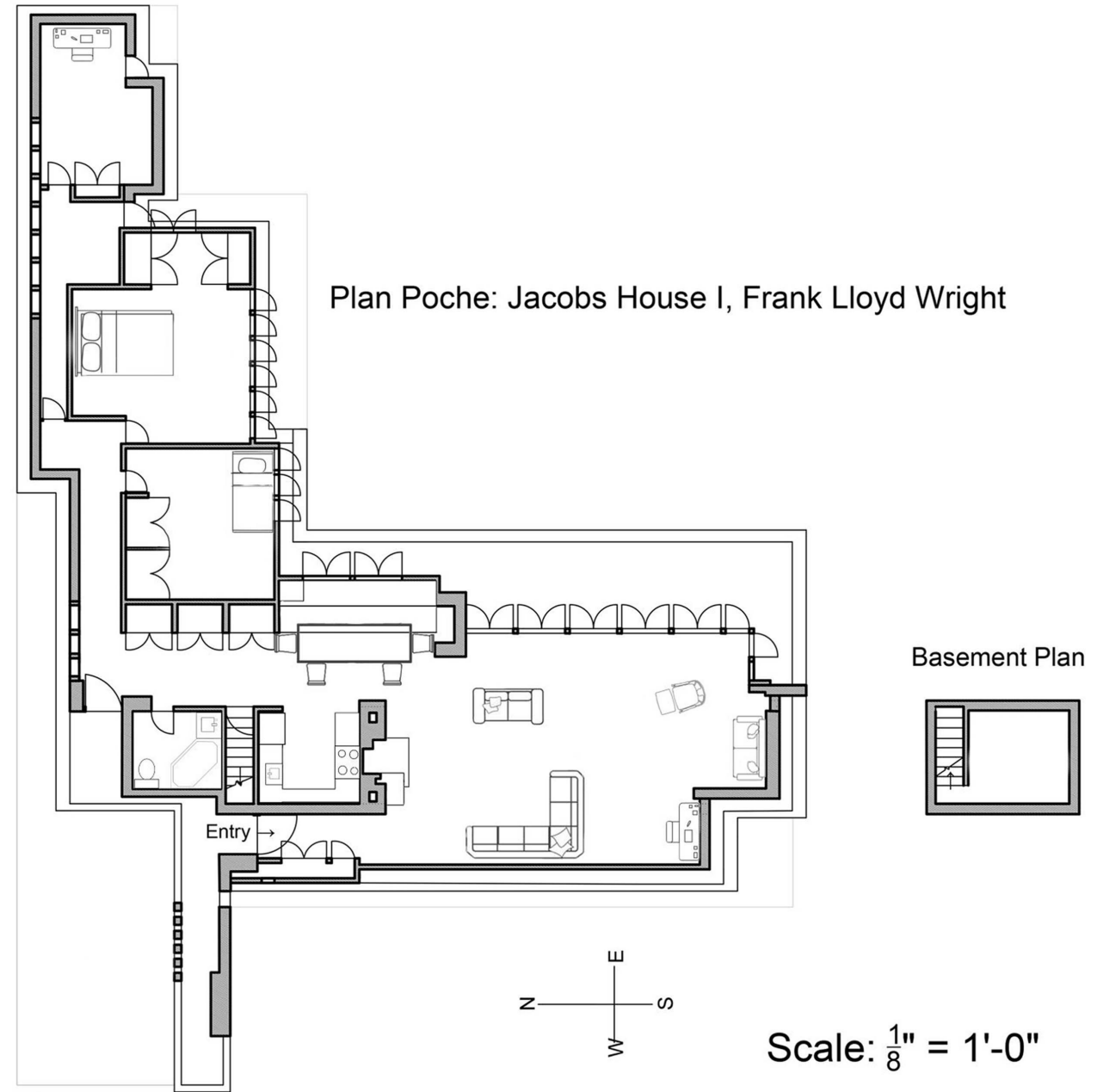
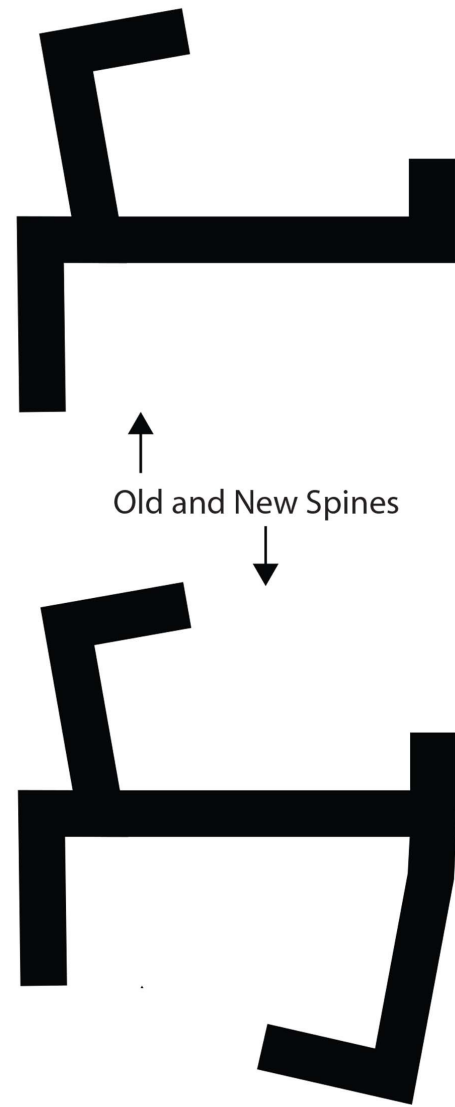


Based on class dicussion, our team decided to go back and make some alterations to our beam and joists placement to strengthen our intent of deisgn. As you can see, we only made a slight change by making the beams by the entrance of the house house vertical with horizontal joists. For the rest of the house, everything remains the same with horizontal beams and vertical joists. Overall, after making some slight adjustments, we believe the house can now successfully hold a new floor or roof above.

0' 5 10' 20'

Design Assignment 3.1: FRAMING SPECULATION

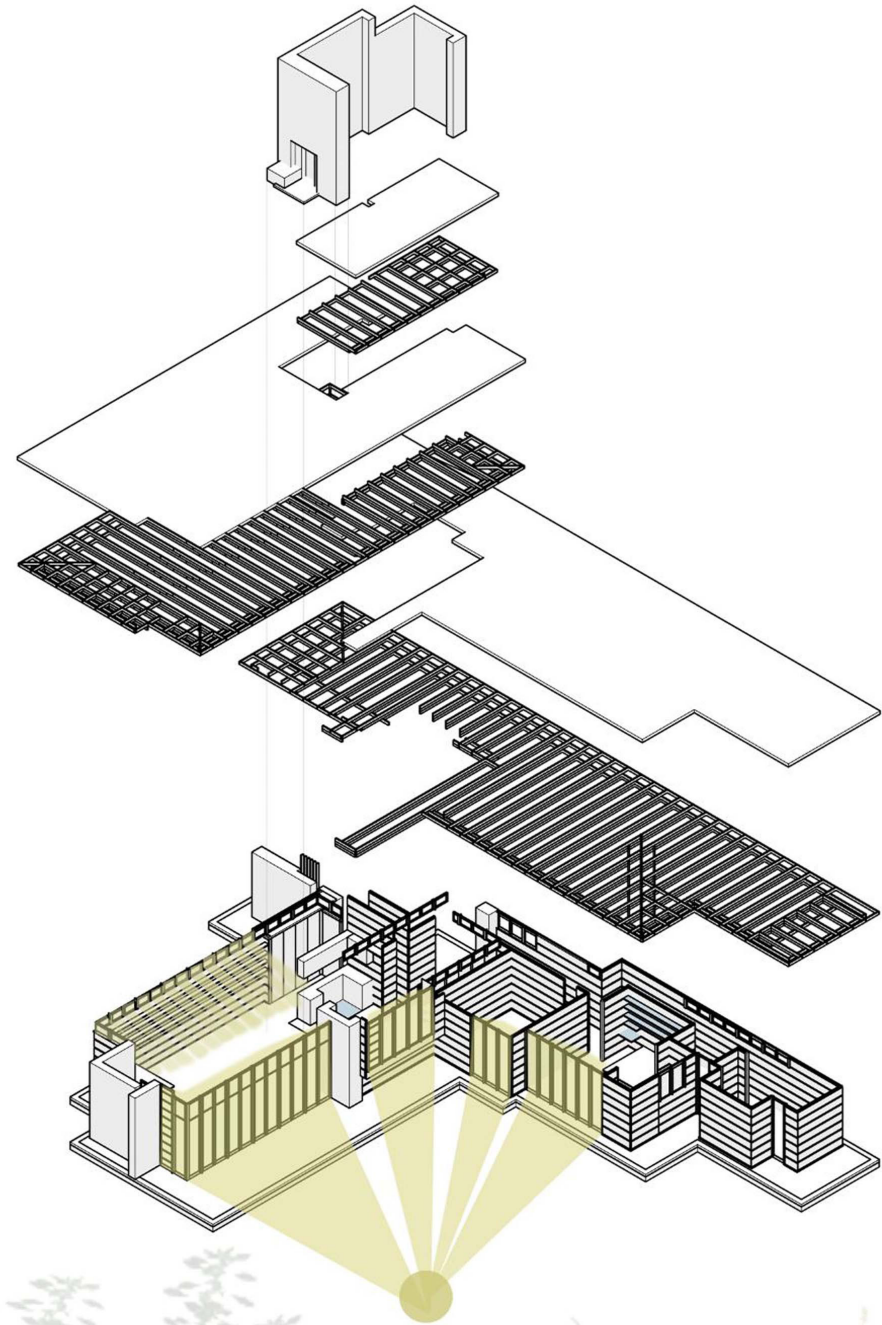
Process & Sketches



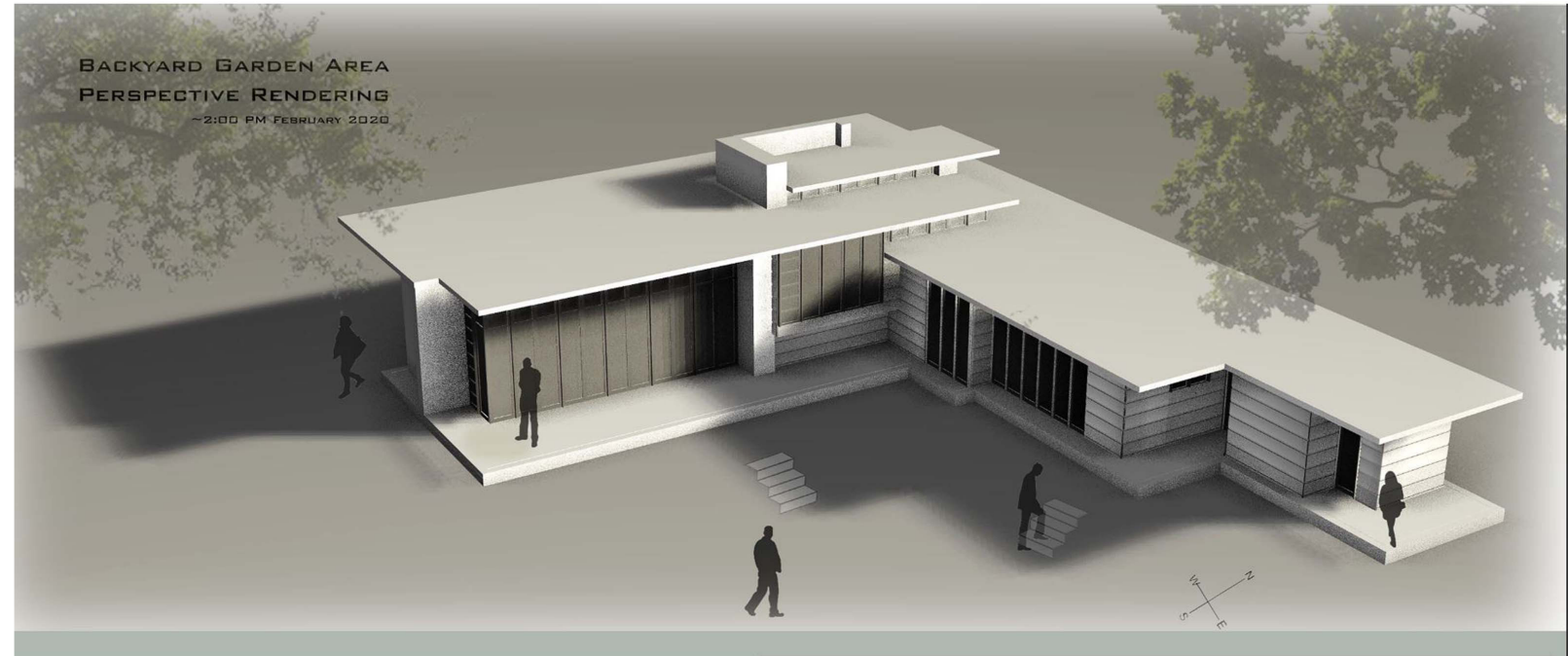
Design Assignment 3.1: FRAMING SPECULATION

Process & Sketches

Nonpareil: Exploded Isometric



Interior Ceiling Detail + Roof Detail



STRUCTURE:
CANTILEVERS AND
ROOF PLAN

