

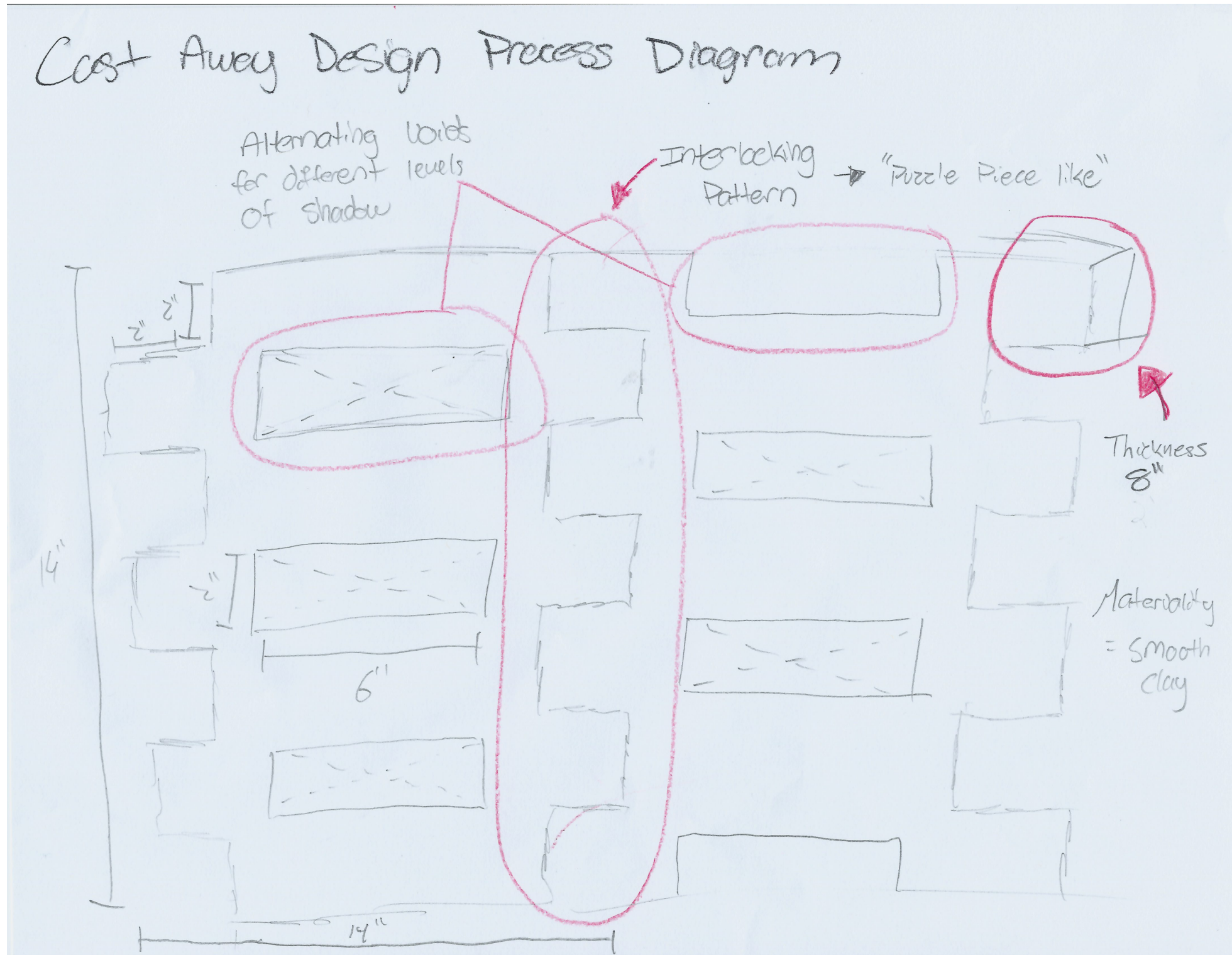
**Design Assignment 2.3: Block Party**  
**Inspirations for Individual Block: Wood Log House**



**Design Assignment 2.3: Block Party**  
**Inspirations for Individual Block: Wood Log House**

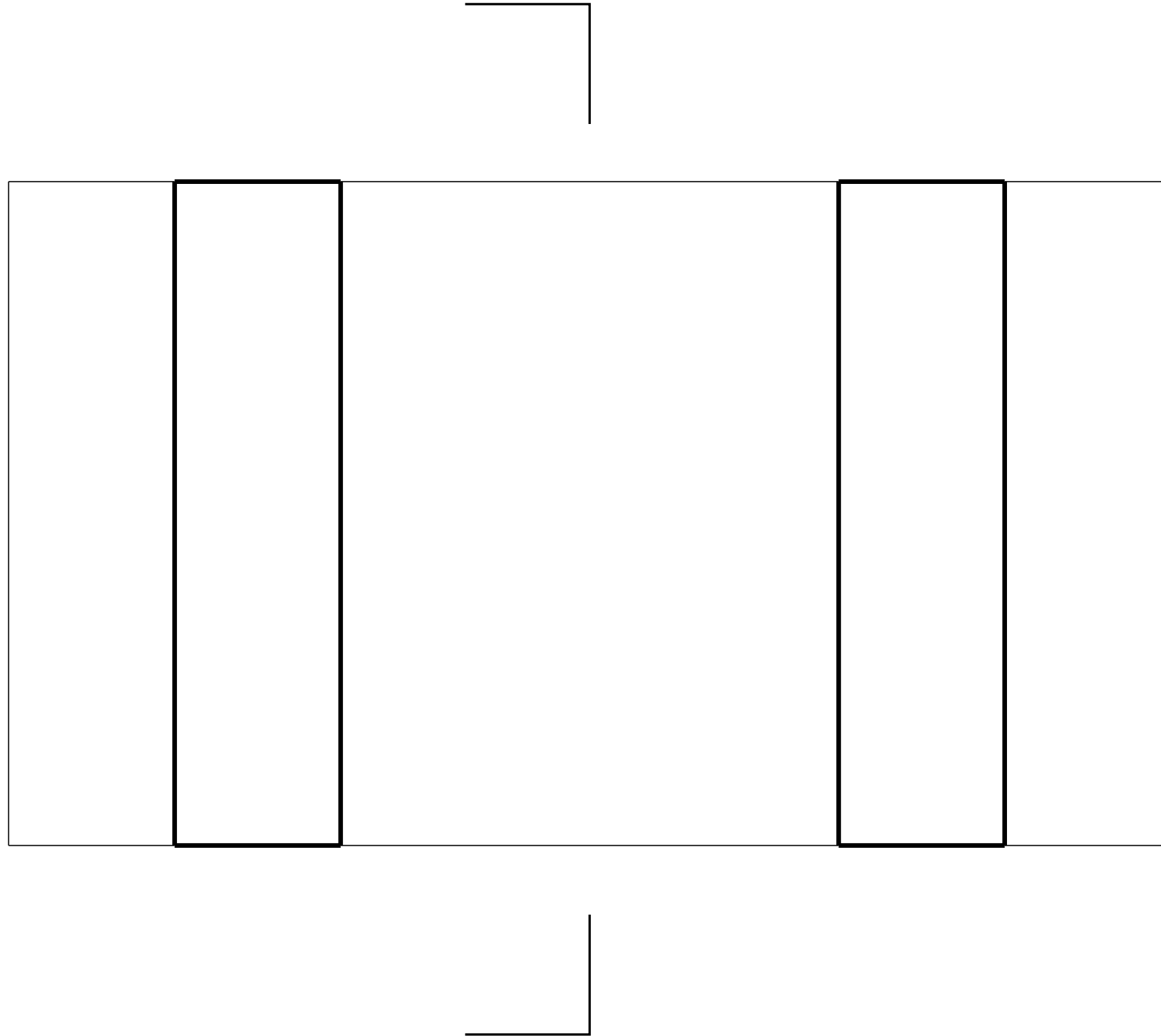


**Design Assignment 2.3: Block Party**  
**Process Diagram: Individual Block**

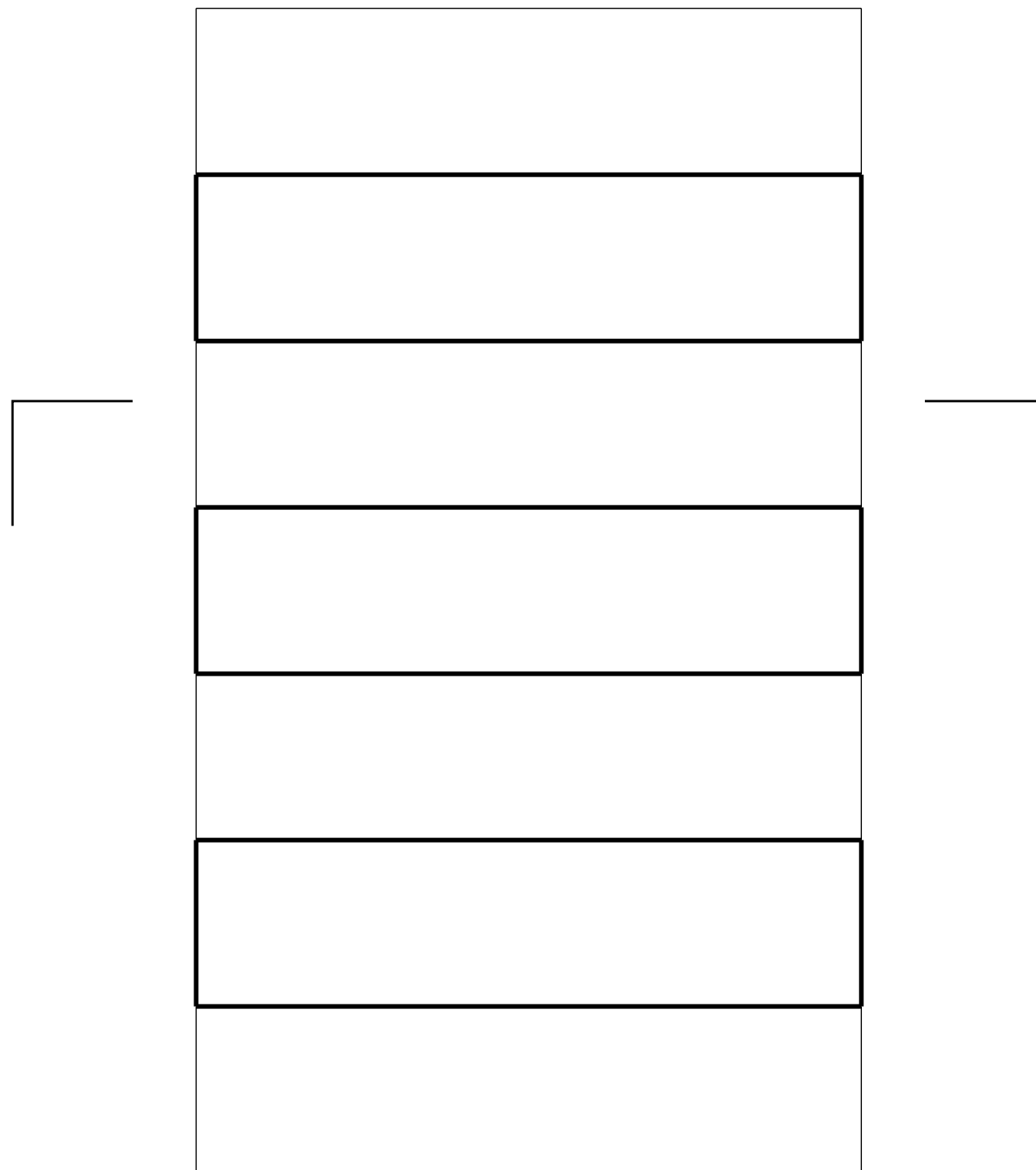


After analyzing our inspiration for the assignment, our group decided to make our own version. In the process diagram illustrated, you can see that we decided to go with a simple design that resembles a puzzle piece with an interlocking pattern. We also incorporated alternating voids within the two different pieces to allow for different levels of shadow.

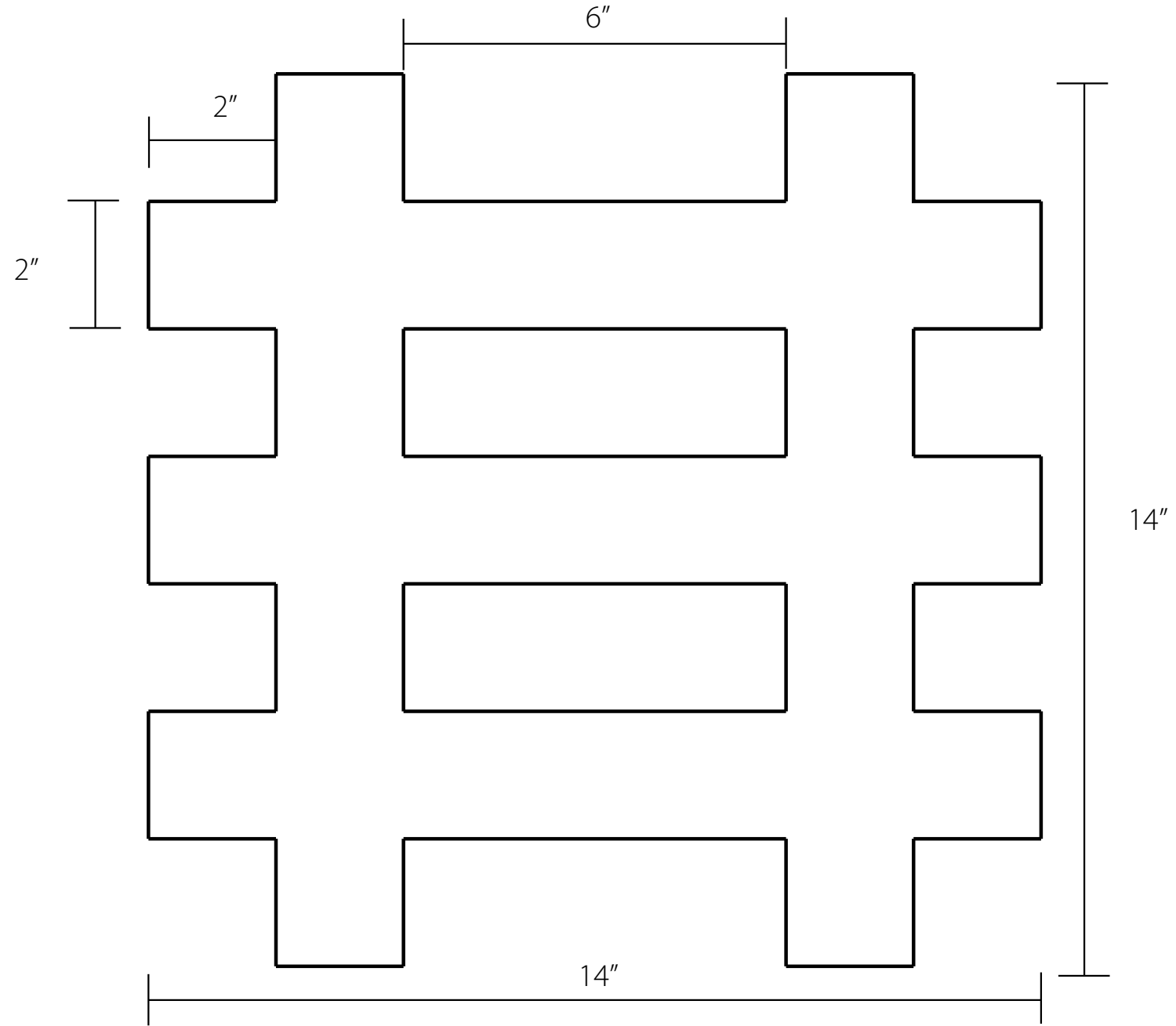
**Design Assignment 2.3: Block Party**  
**Individual Block: Plan**



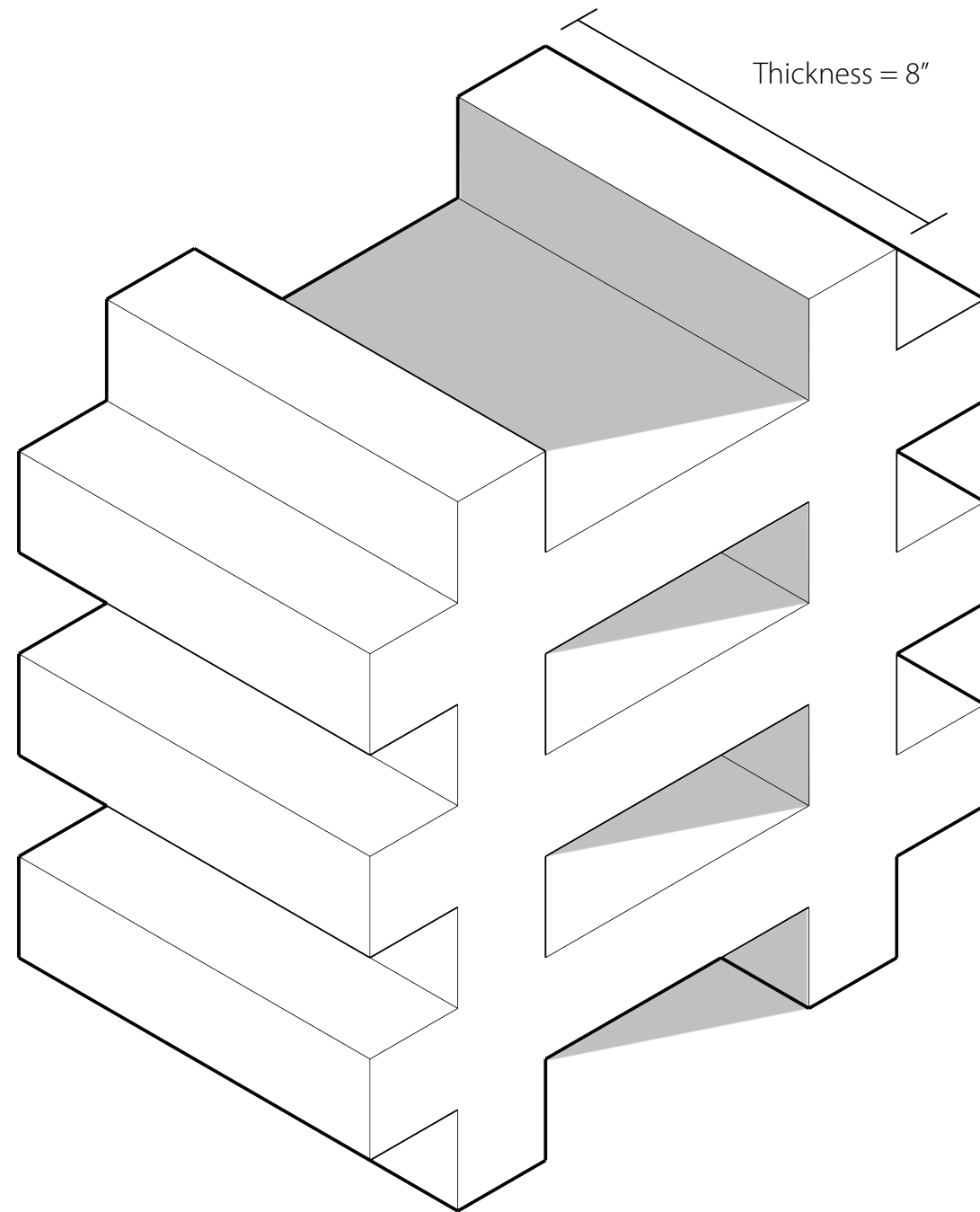
**Design Assignment 2.3: Block Party**  
**Individual Block: Section**



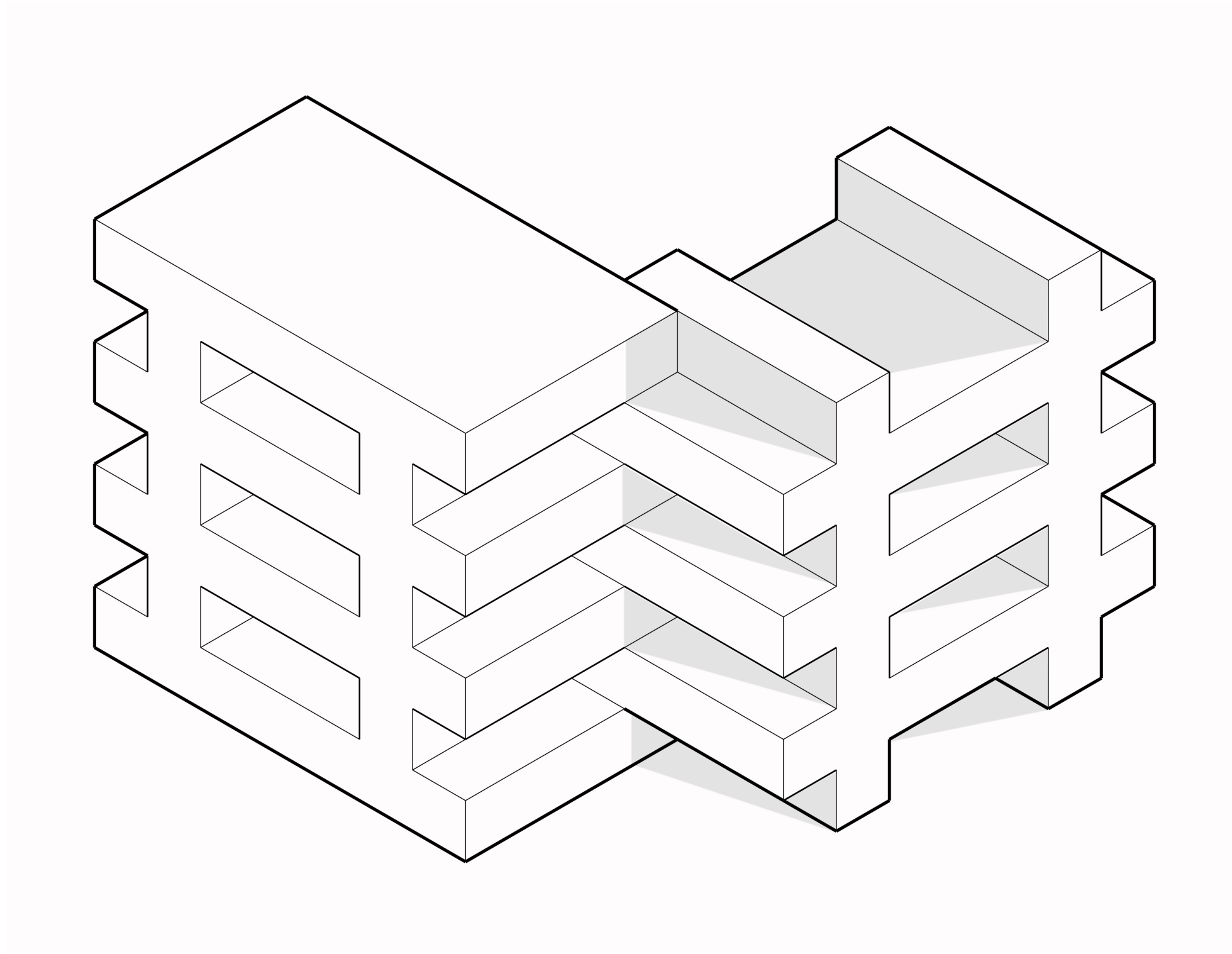
**Design Assignment 2.3: Block Party**  
**Individual Block: Elevation**



**Design Assignment 2.3: Block Party**  
**Individual Block: Axonometric View**

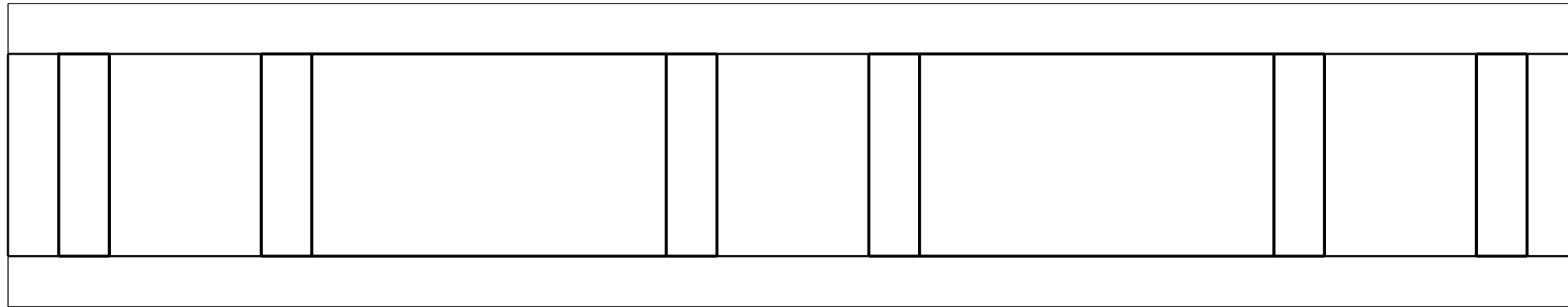


**Design Assignment 2.3: Block Party**  
**Individual Block: Axonometric View: Tuning a Corner**

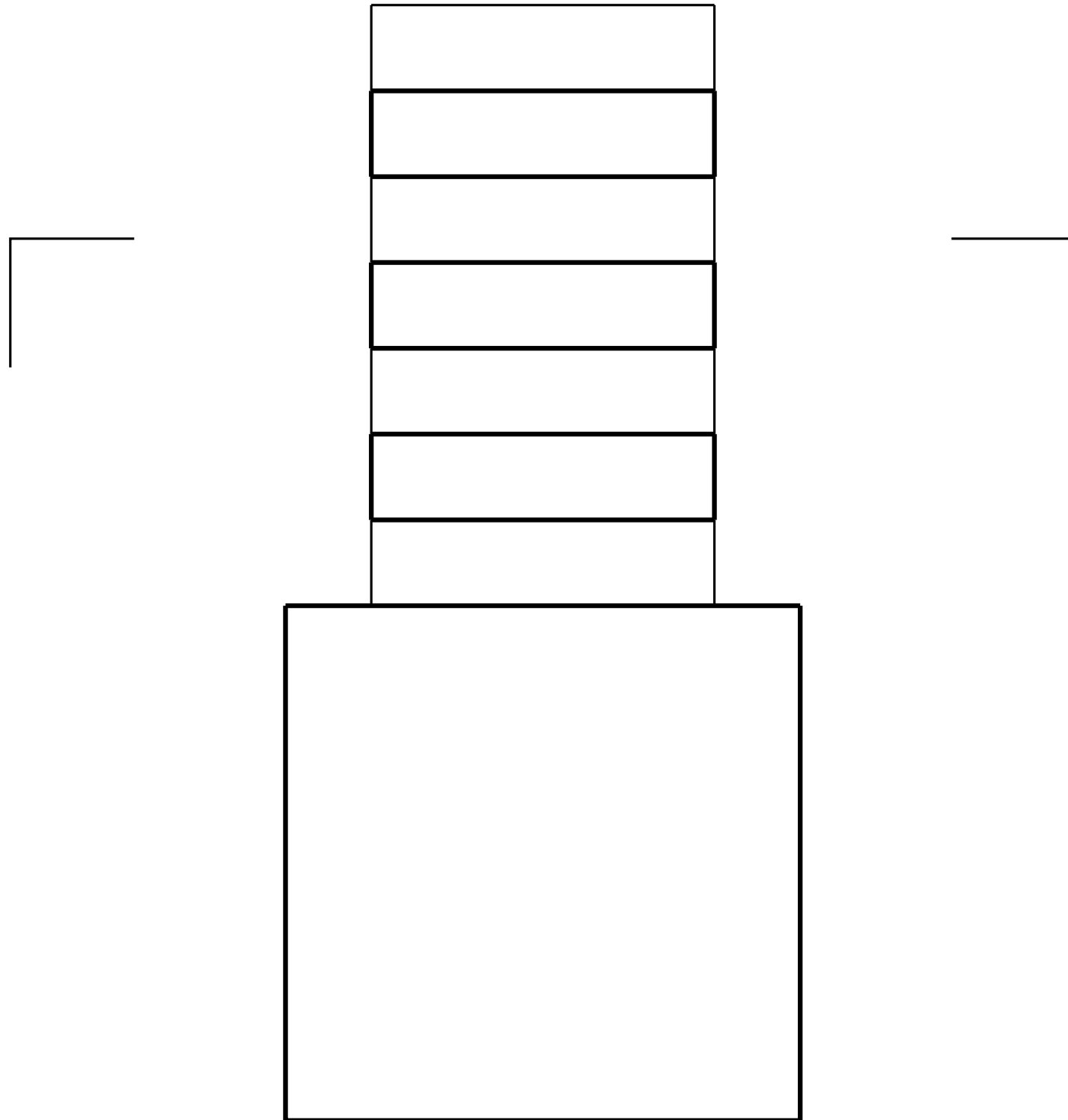




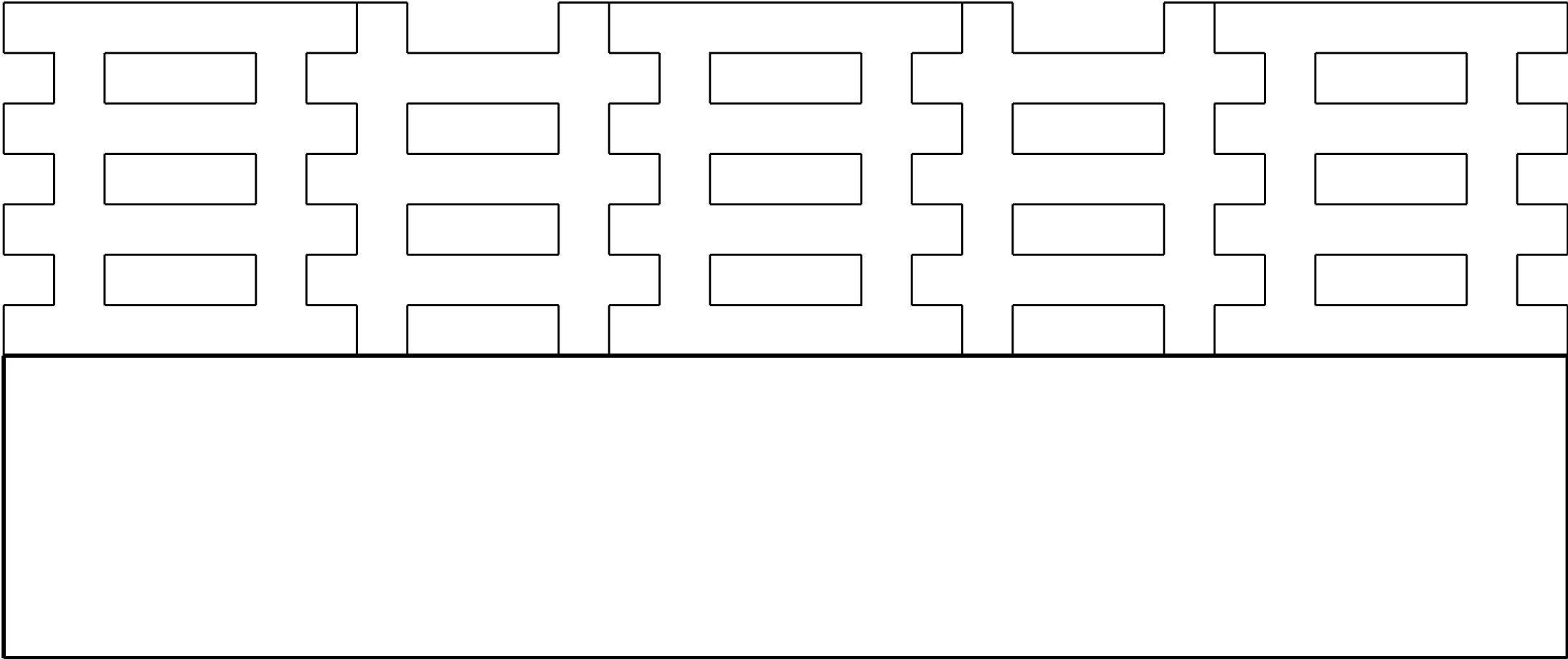
**Design Assignment 2.3: Block Party**  
**Multiple Masonry Blocks: Plan**



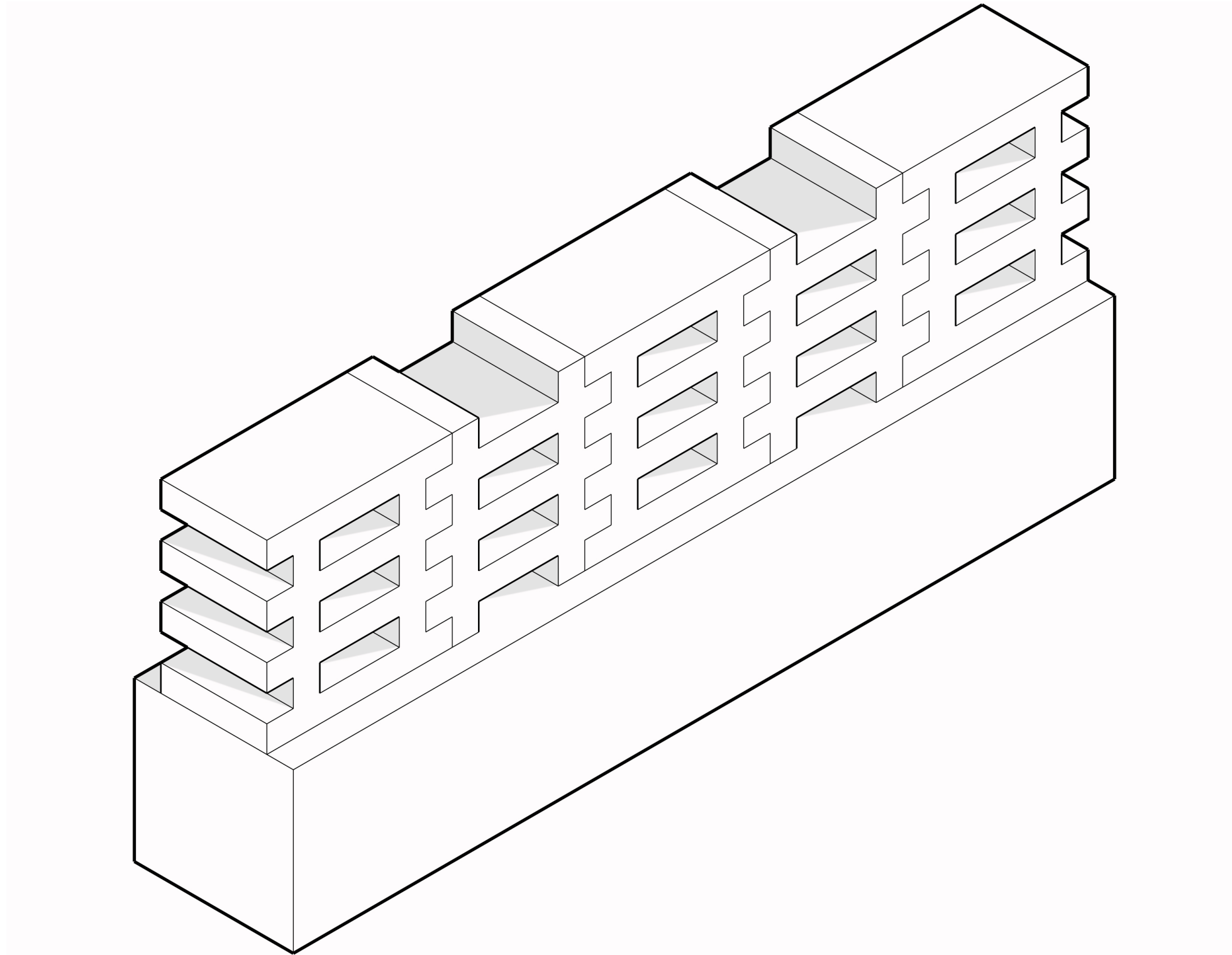
**Design Assignment 2.3: Block Party**  
**Multiple Masonry Blocks: Section**



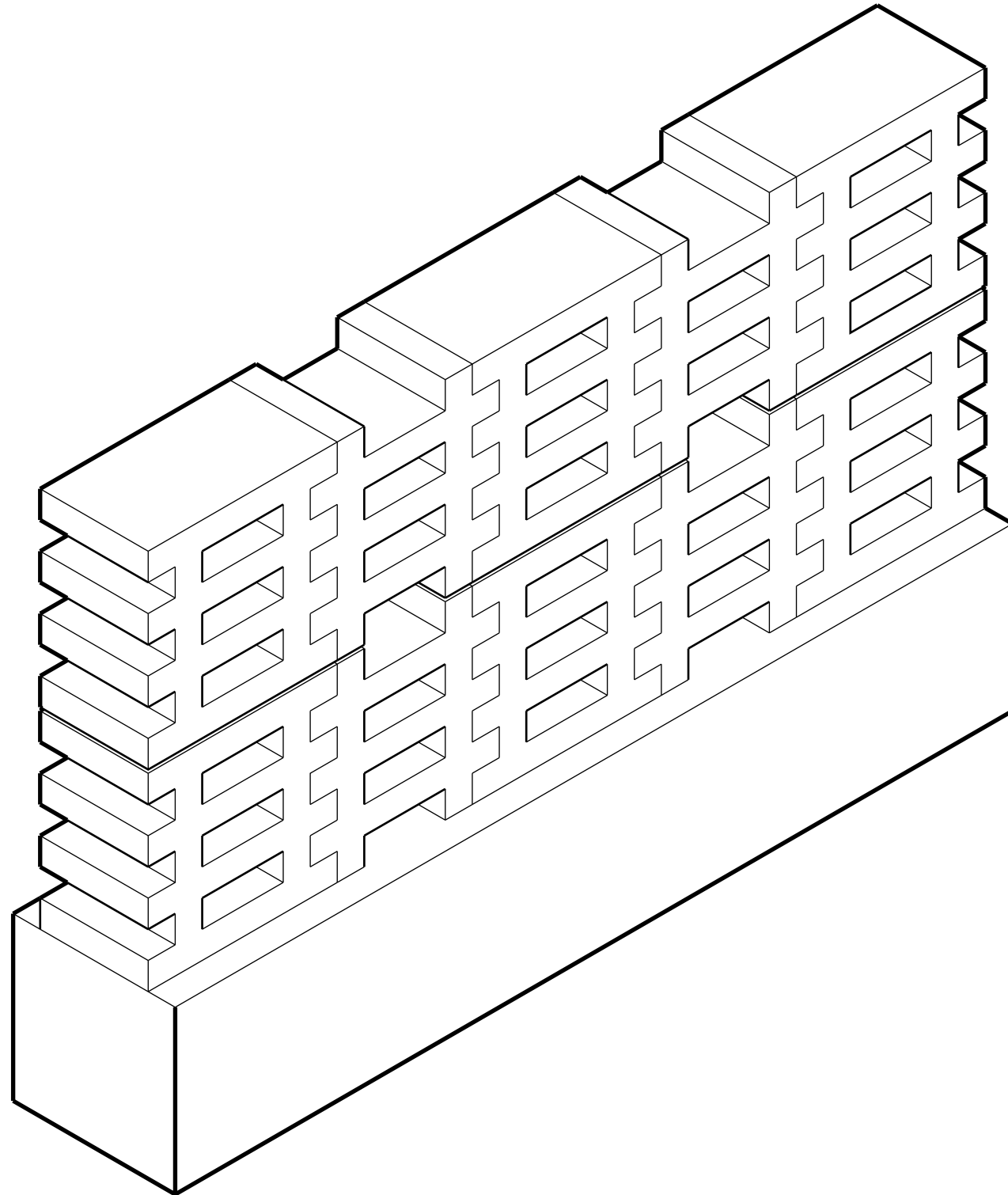
**Design Assignment 2.3: Block Party**  
**Multiple Masonry Blocks: Elevation**



**Design Assignment 2.3: Block Party**  
**Multiple Masonry Blocks: Axonometric View**

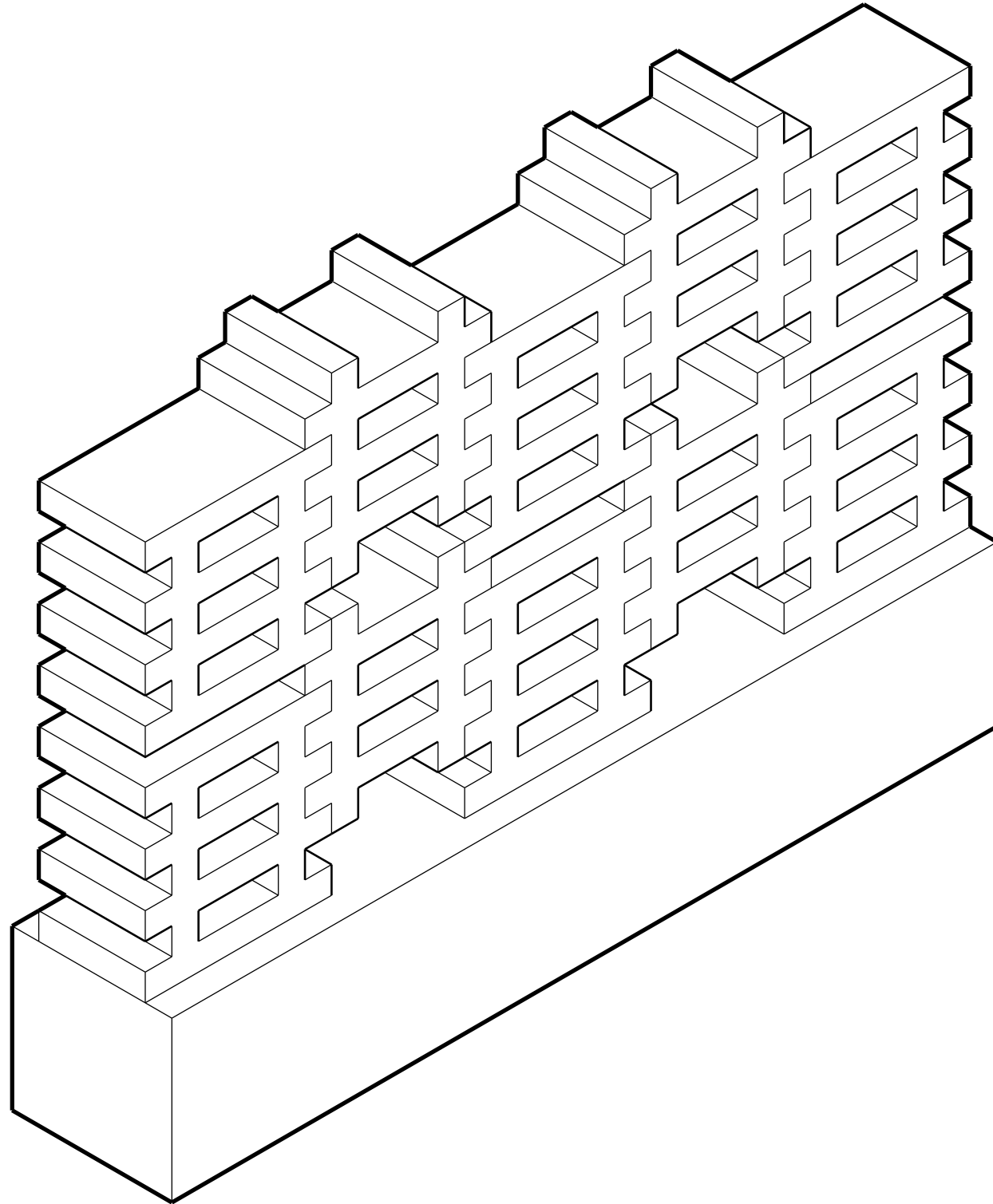


**Design Assignment 2.3: Block Party**  
**Multiple Masonry Blocks: Axonometric View**



This stacking method is a standard orientation in which each horizontal layer is placed on top of each other vertically.

**Design Assignment 2.3: Block Party**  
**Multiple Masonry Blocks: Axonometric View**

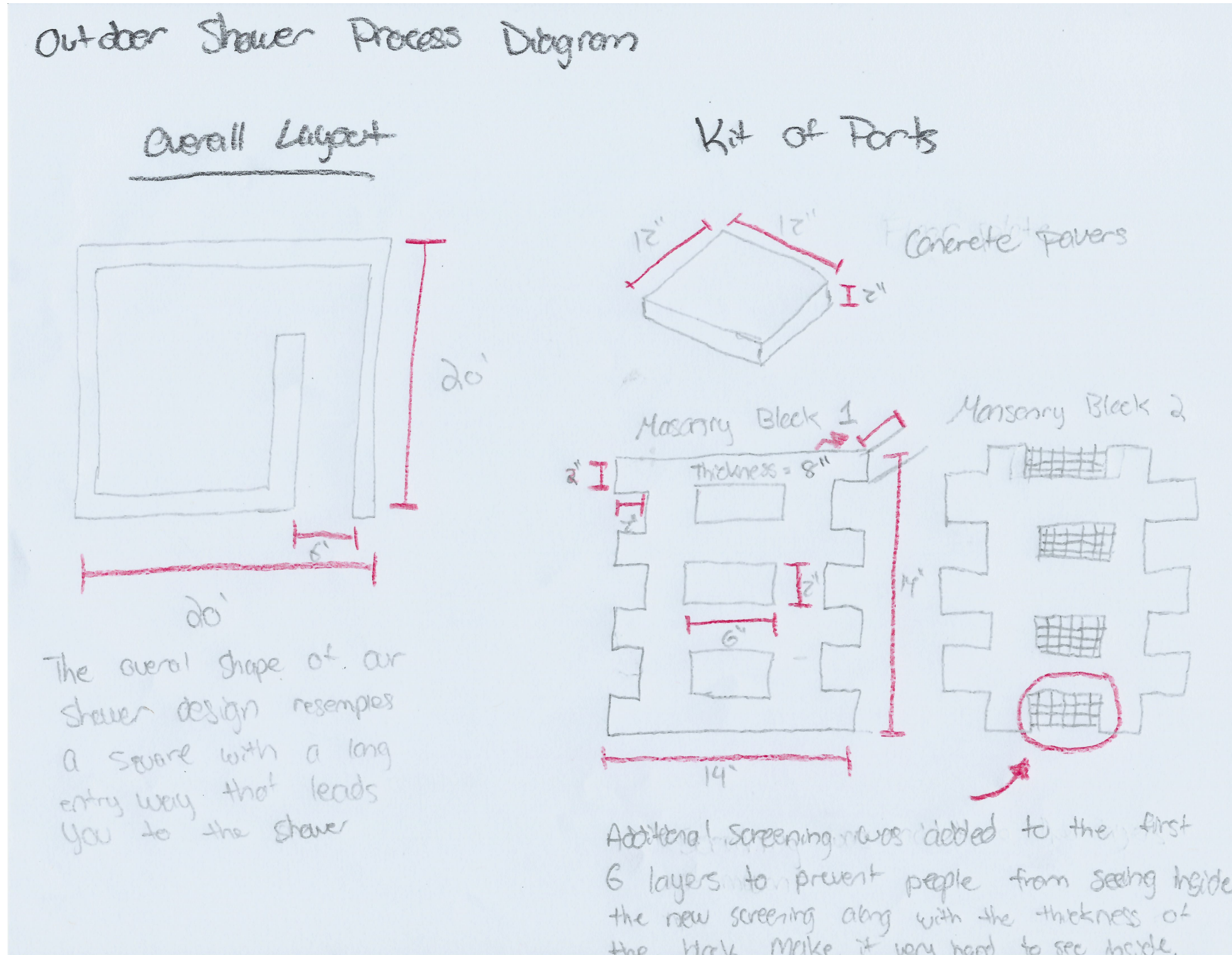


This stacking method strides away from the typical stack. Using our concept of the puzzle pieces, we have moved various pieces up to create a staggered pattern. In order yo make this stacking method work, corners would need to be added to the ends so that they can be suported.

**Design Assignment 2.3: Block Party**  
**Inspirations for Outdoor Shower: Santa Monica Restrooms**



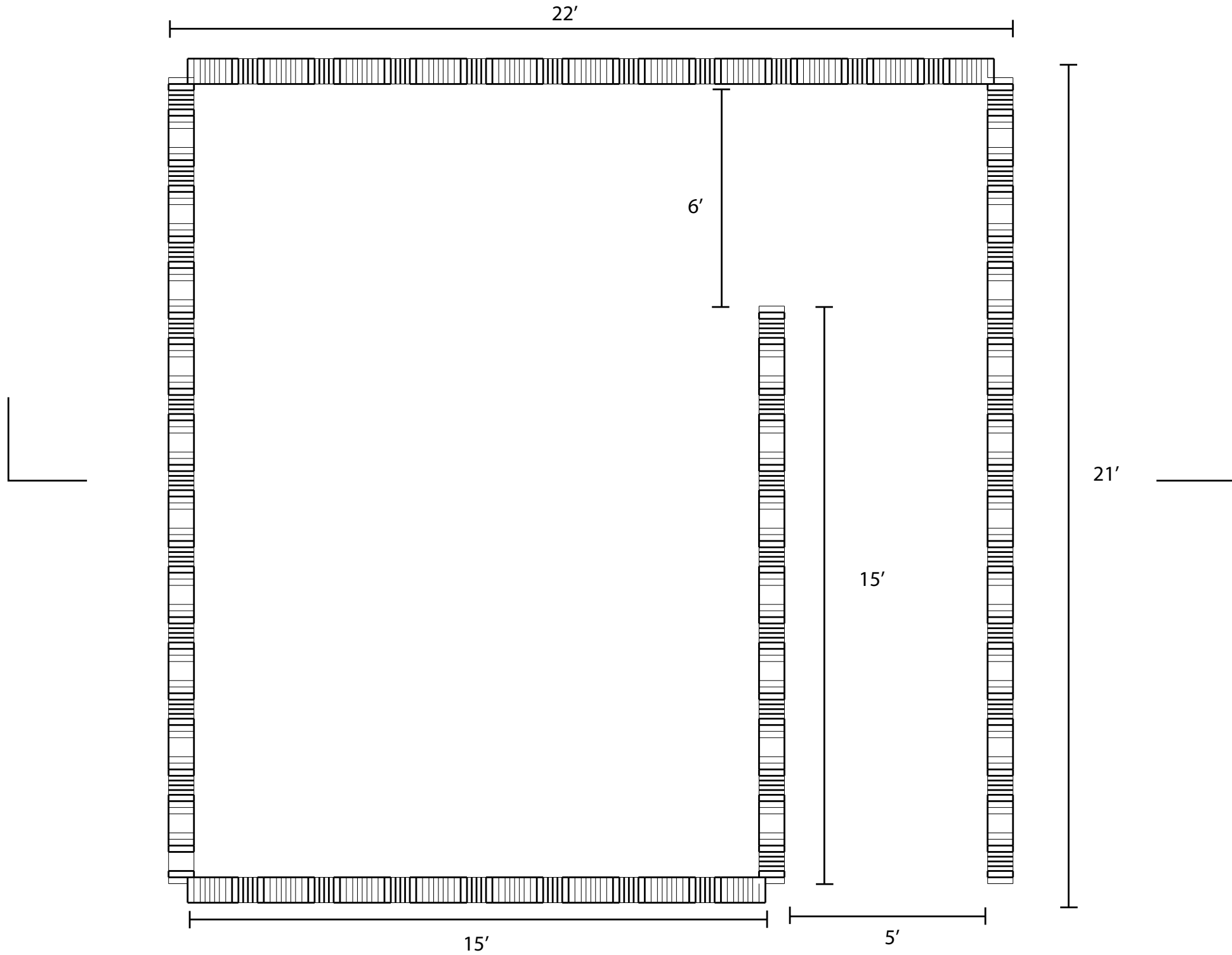
## Design Assignment 2.3: Block Party Process Diagram: Shower Design



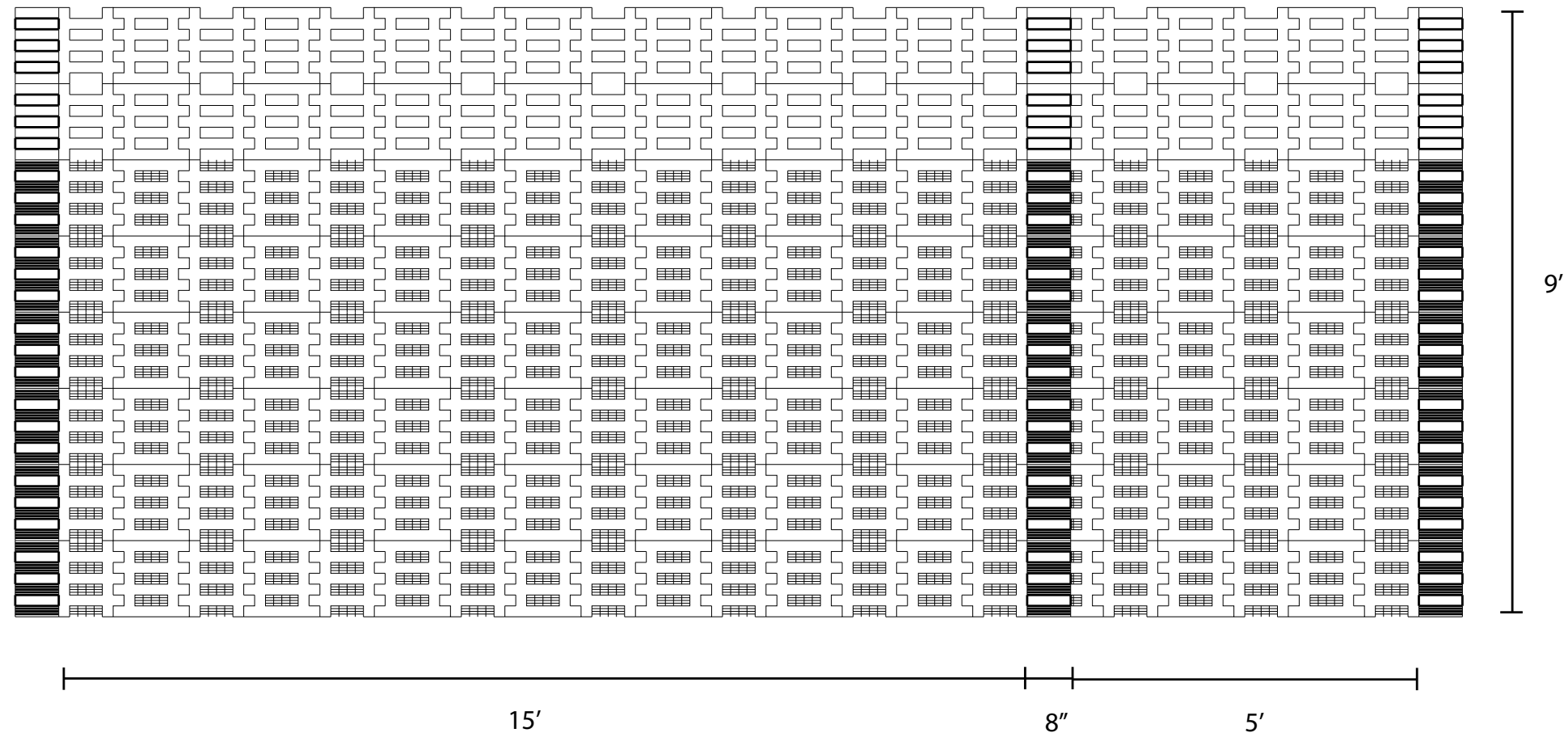
In this process diagram for the shower design, you can see that our group decided to go with a large gender separated changing room that was roughly 20' by 20' with a long entry way that leads to the showers. Another thing to point out is that we made a slight alteration to our masonry block as we added additional screening to some of the layers of blocks to prevent people from looking inside the changing room.



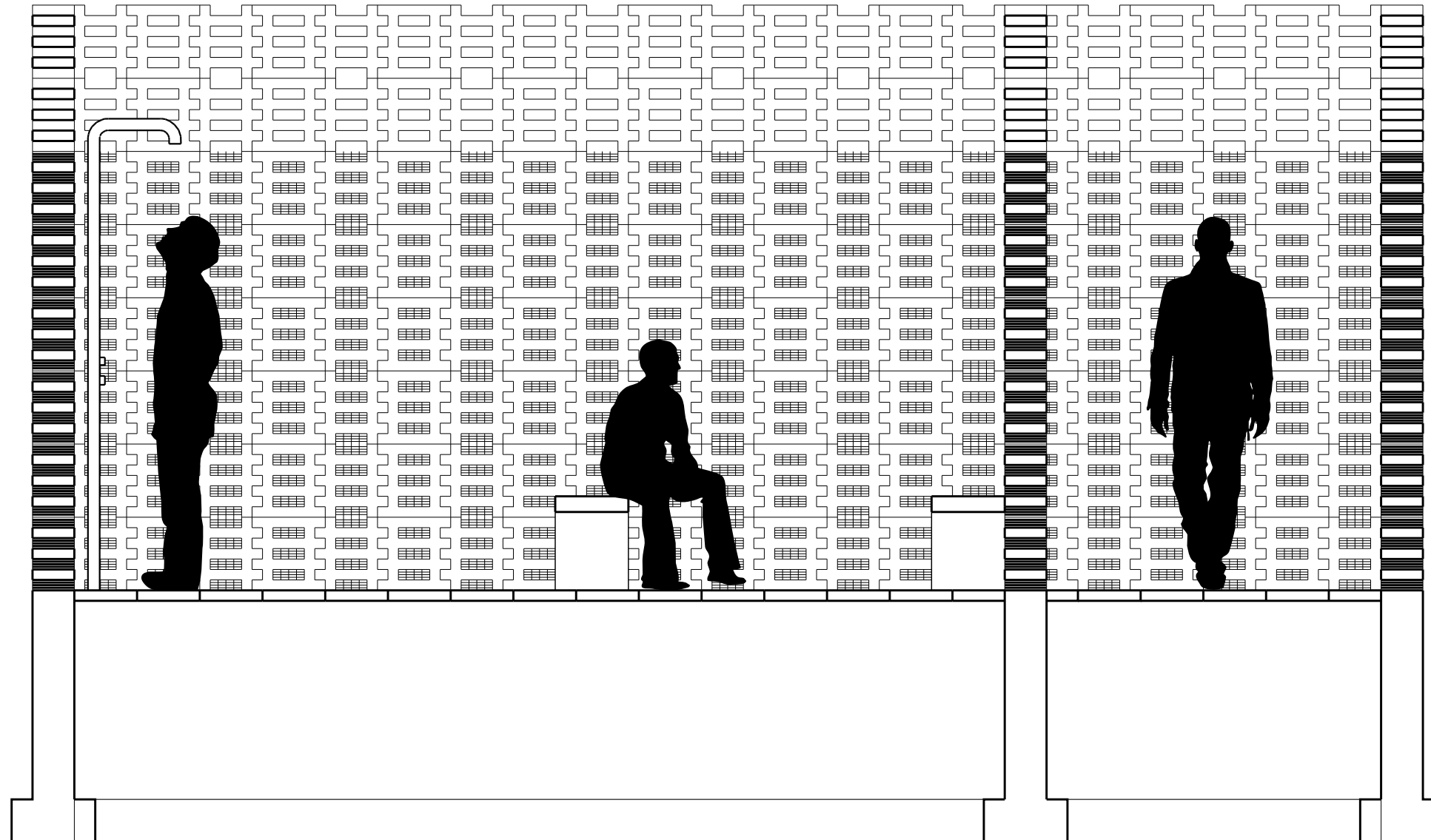
**Design Assignment 2.3: Block Party**  
**Public Changing Room: Structure Plan**



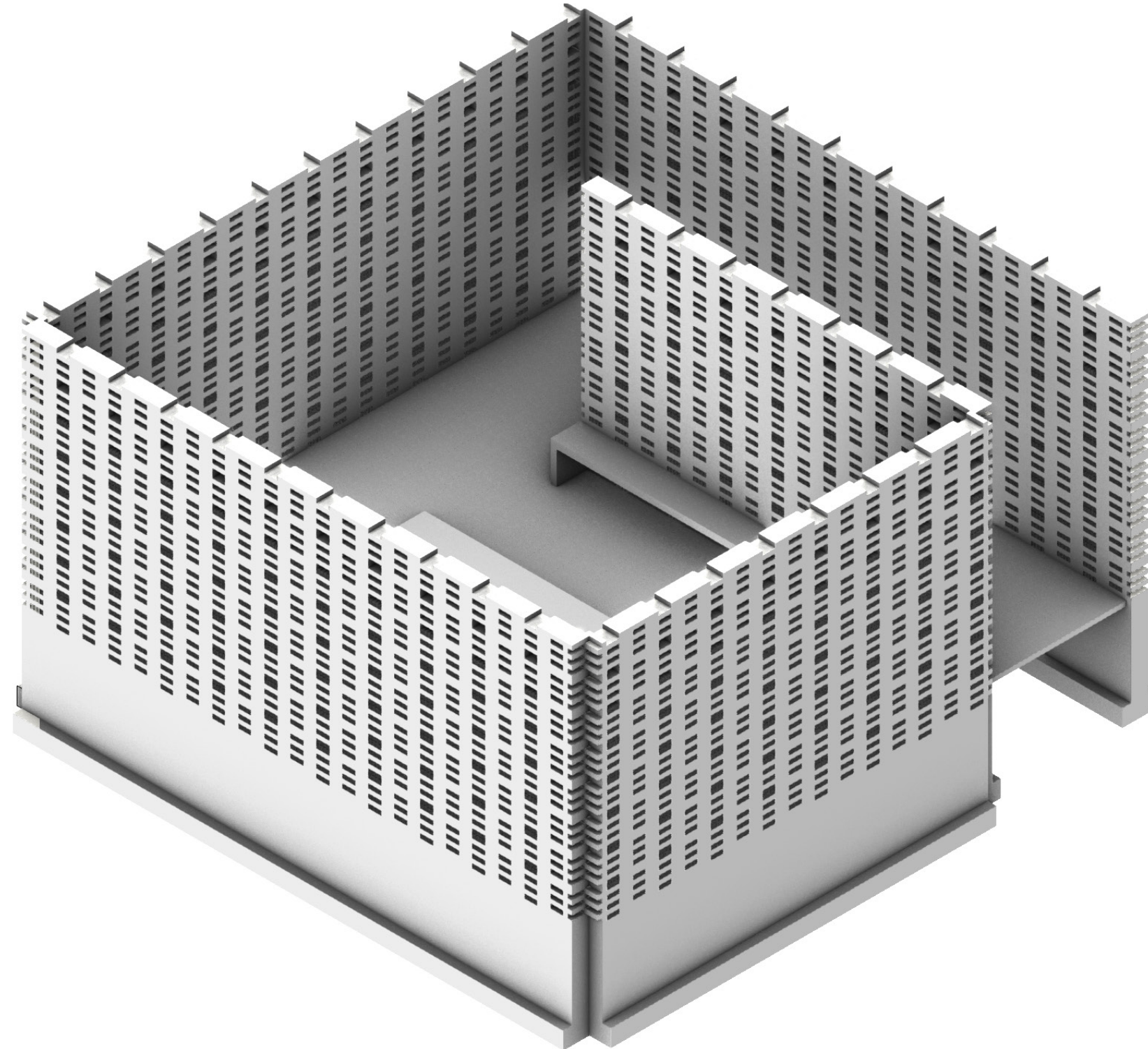
**Design Assignment 2.3: Block Party**  
**Public Changing Room: Structure Section**



**Design Assignment 2.3: Block Party**  
**Public Changing Room: Detailed Wall Section**



**Design Assignment 2.3: Block Party**  
**Public Changing Room: Axonmetric Viewpoint**



ARCH 2200/7300 | Building Matters| FALL 2020

Wentworth Institute of Technology

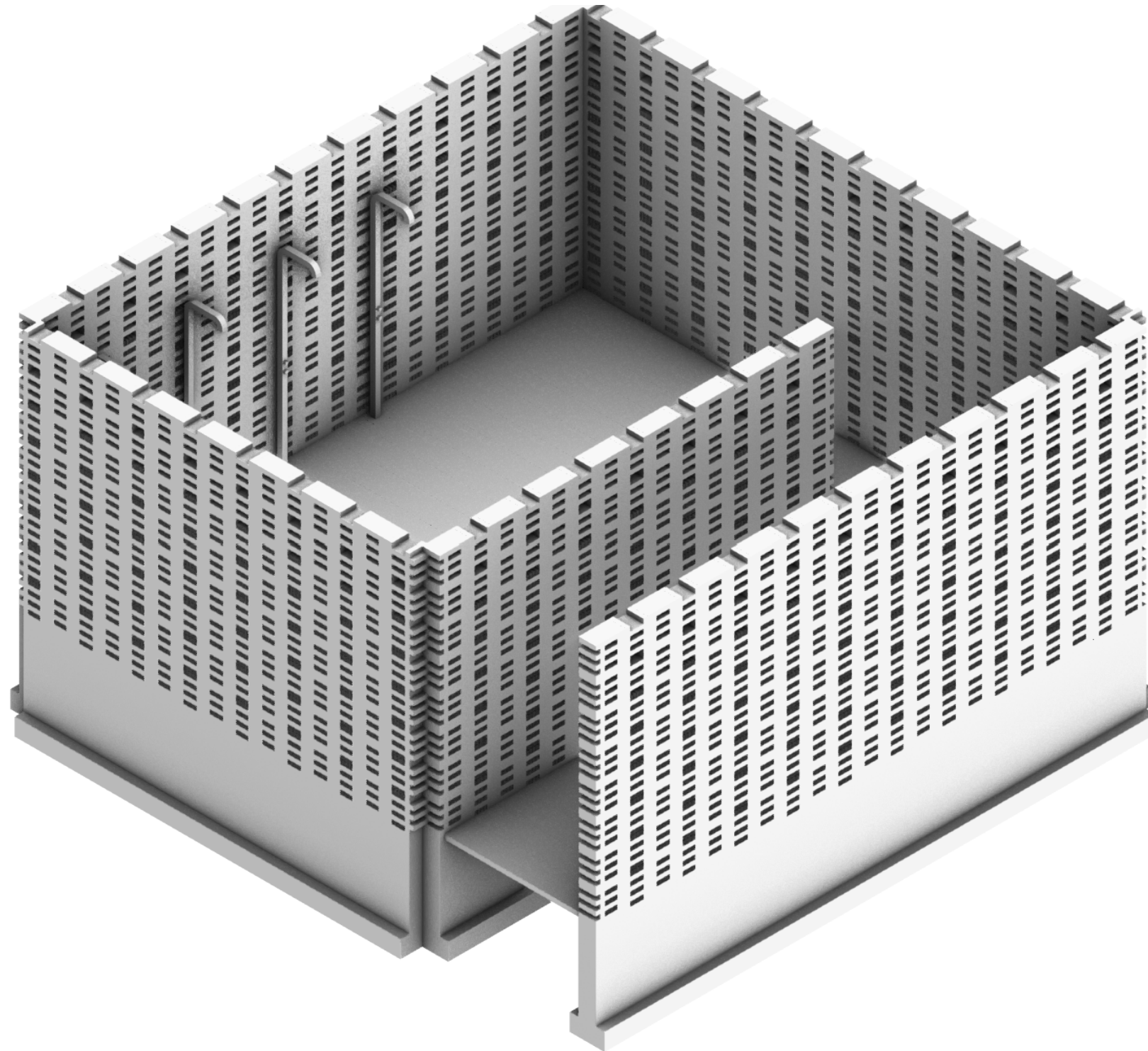
College of Architecture, Design and Construction

Evan Clark

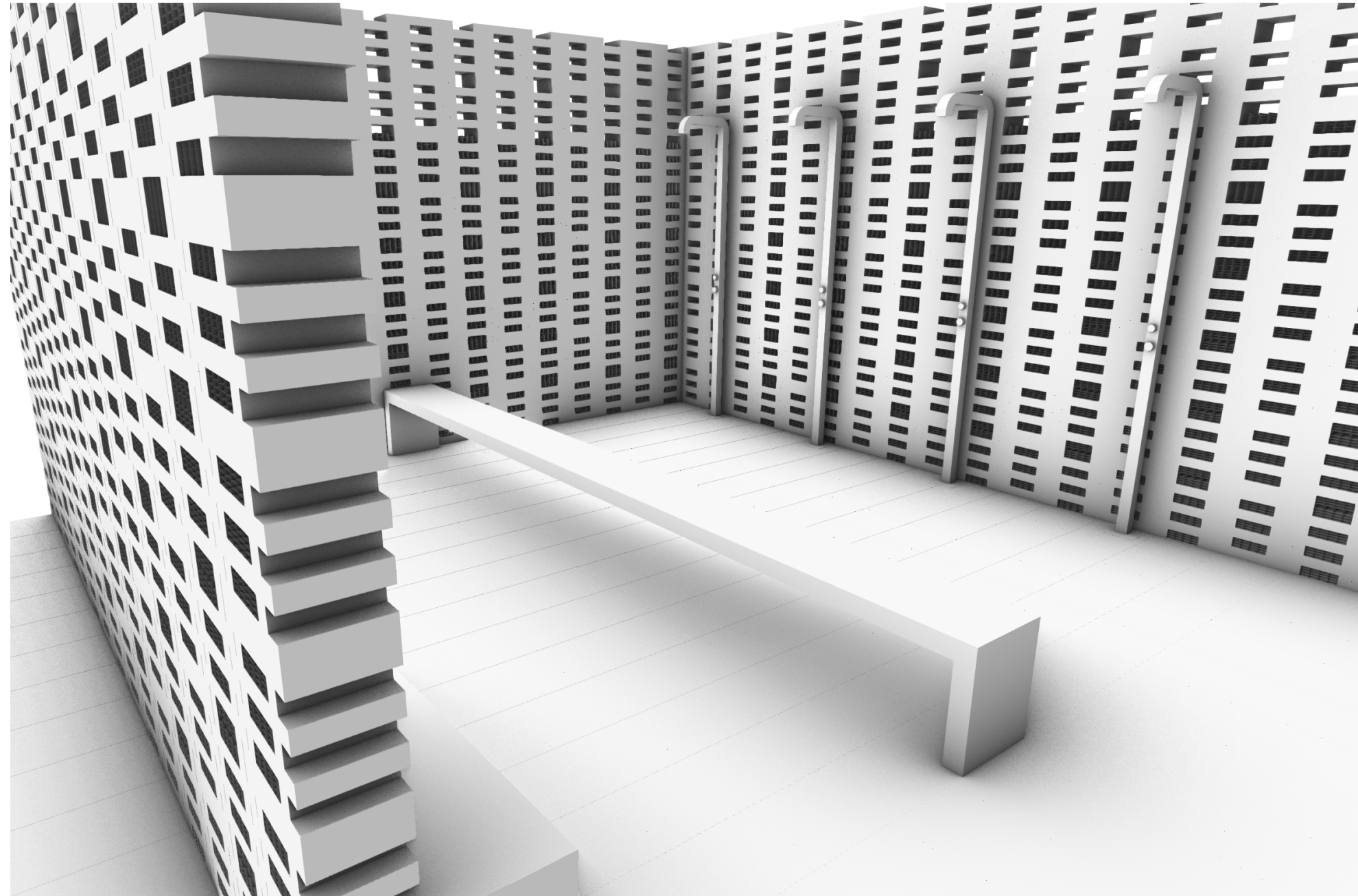
Lexi Winston

Owen Brynes

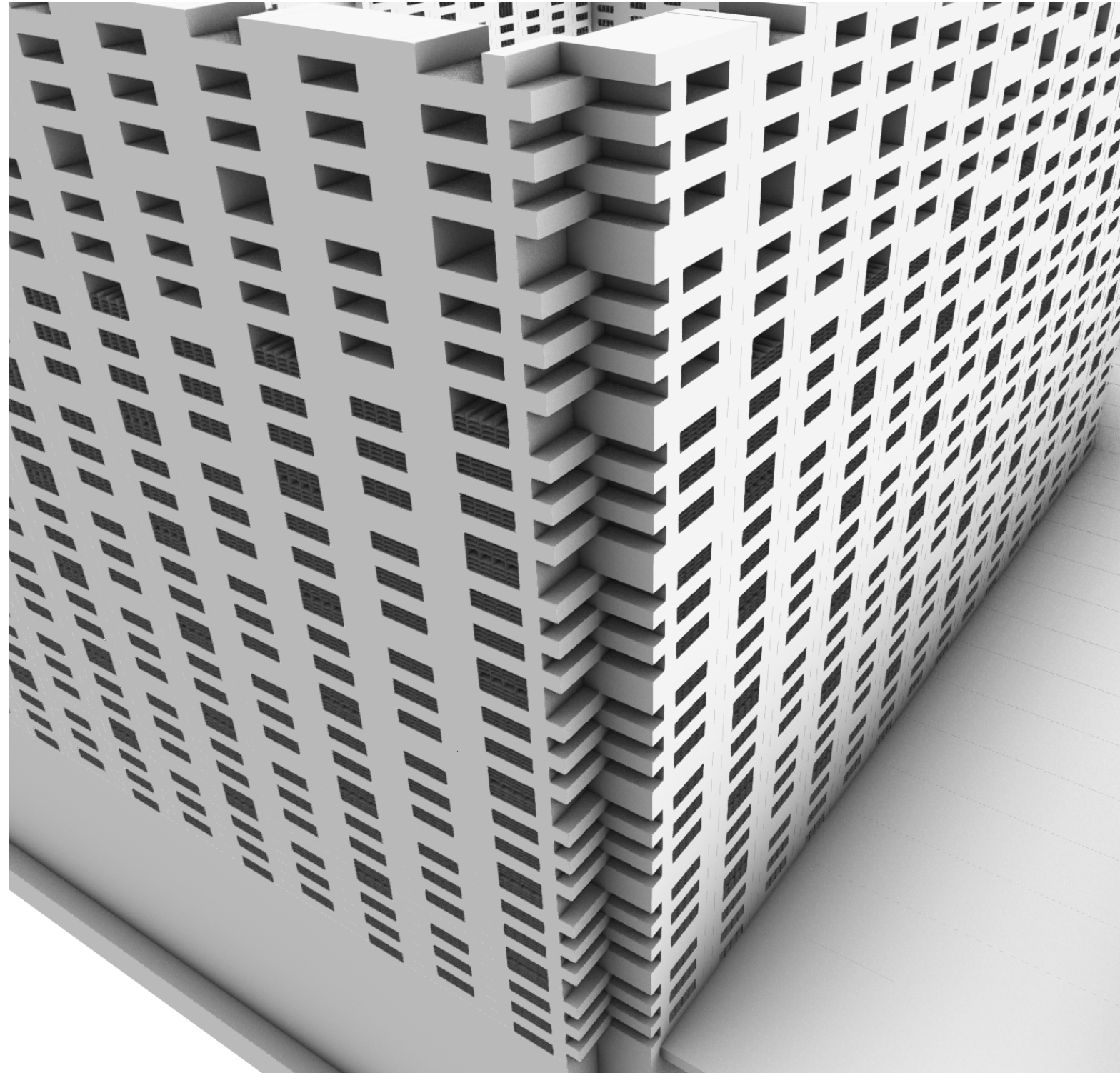
**Design Assignment 2.3: Block Party**  
**Public Changing Room: Axonmetric Viewpoint**



**Design Assignment 2.3: Block Party**  
**Public Changing Room: Perspective Viewpoint**

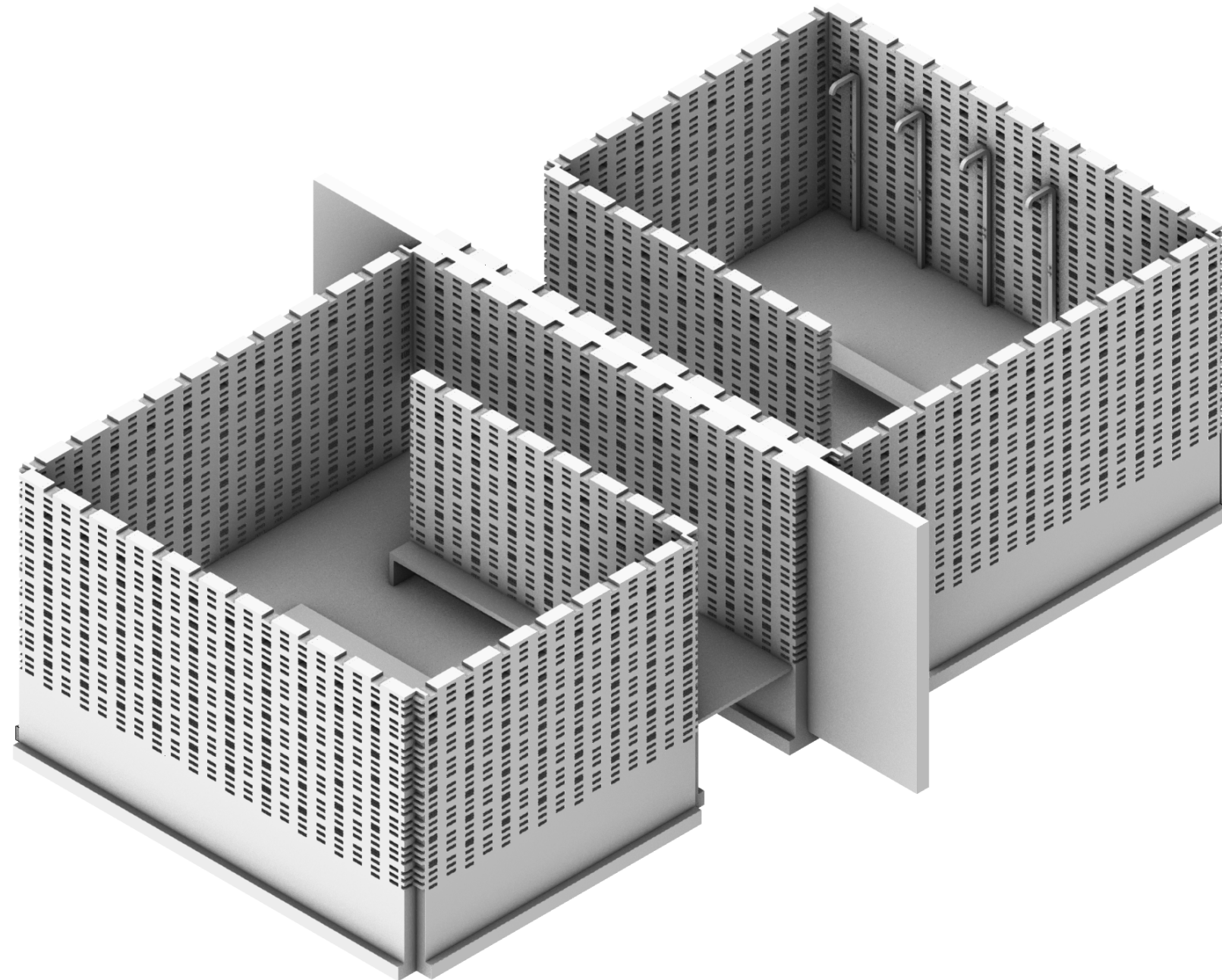


**Design Assignment 2.3: Block Party**  
**Public Changing Room: Special Conditions Viewpoint - Corner**



## Design Assignment 2.3: Block Party

### Public Changing Room: Relating to the Precedent



This final slide presents how both gender changing rooms combine into one complete structure. Like the precedent shown earlier, there is a dividing wall that separates the two changing rooms. You can also notice that the rooms are flipped from each other causing people to enter on opposite sides.