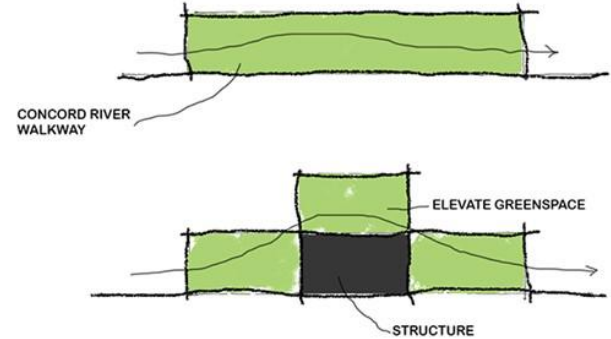
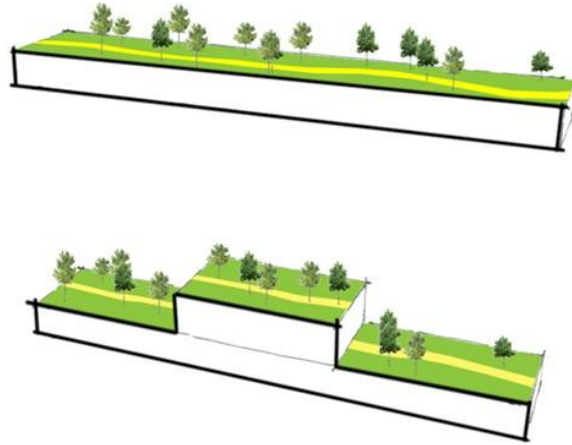




LOWELL MAKERSPACE | FINAL | LOGAN MIDDLETON - CATRIEL KURZ RIBETTO

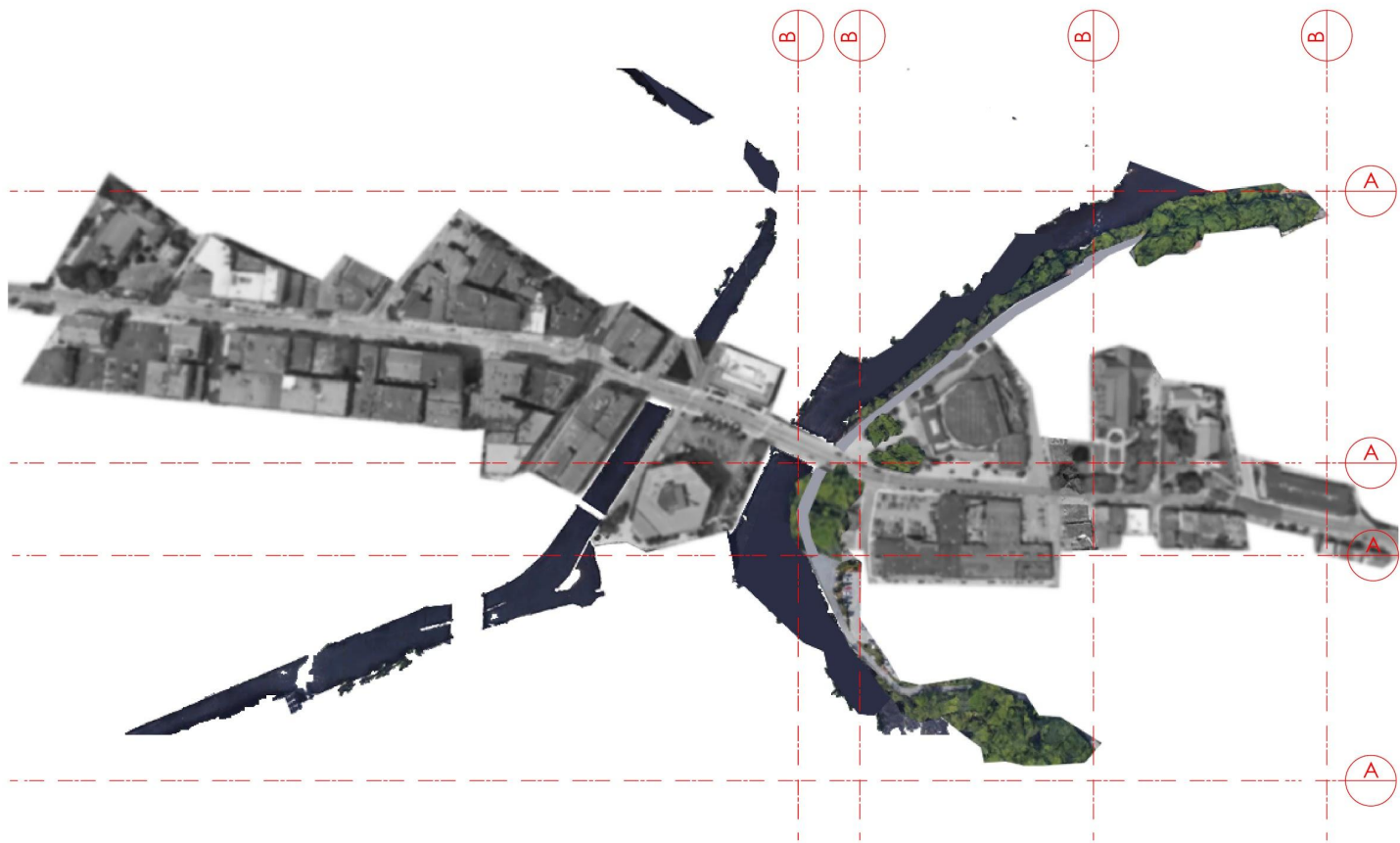


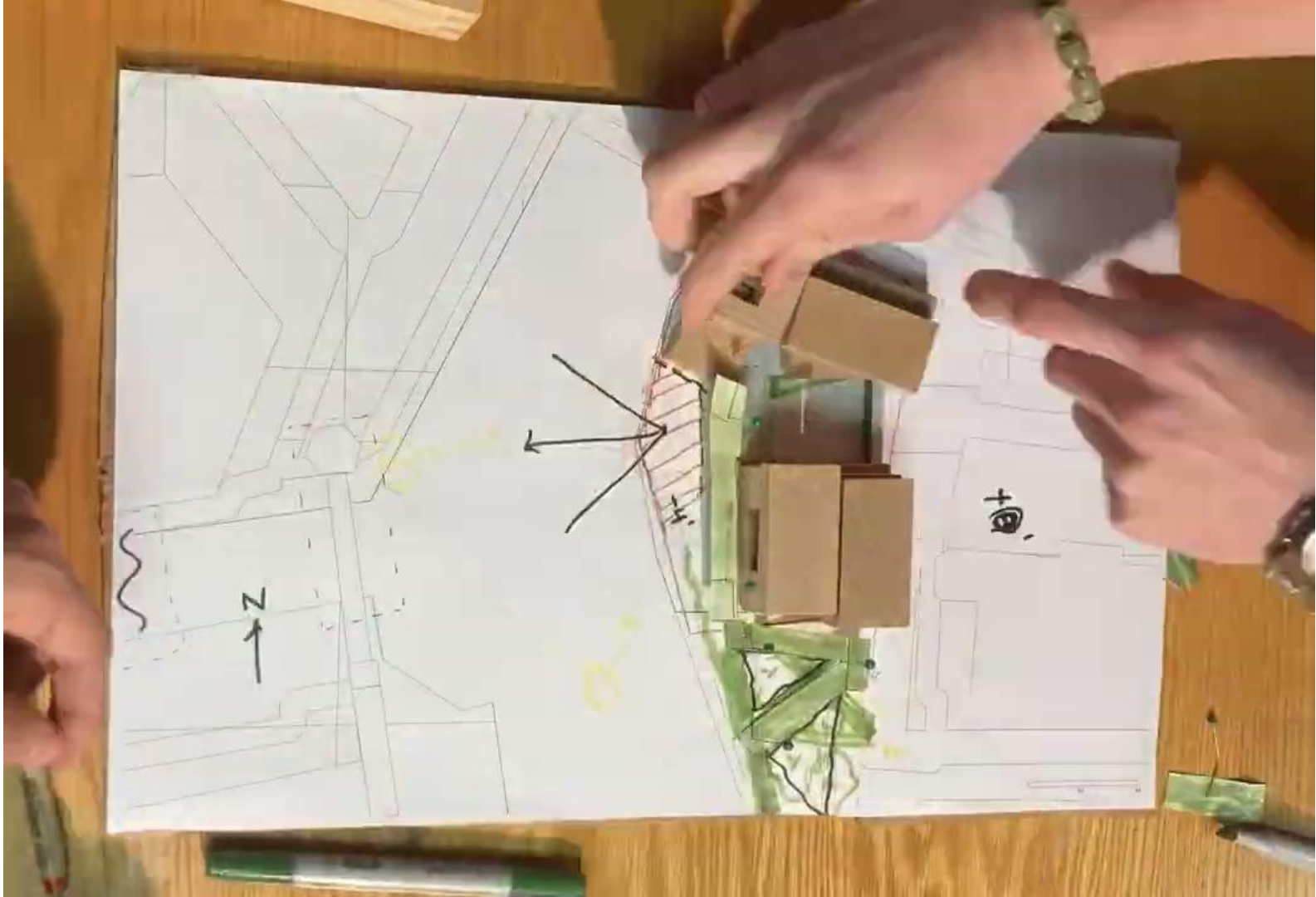
CONCEPT DEVELOPMENT

The Lowell river walkway continues through the site, building structures are engaged as a component of the walkway instead of imposing on and disrupting it. The unification of the building architecture and site is found in the materiality, topographical connections and public zones that facilitate a harmonious community environment.

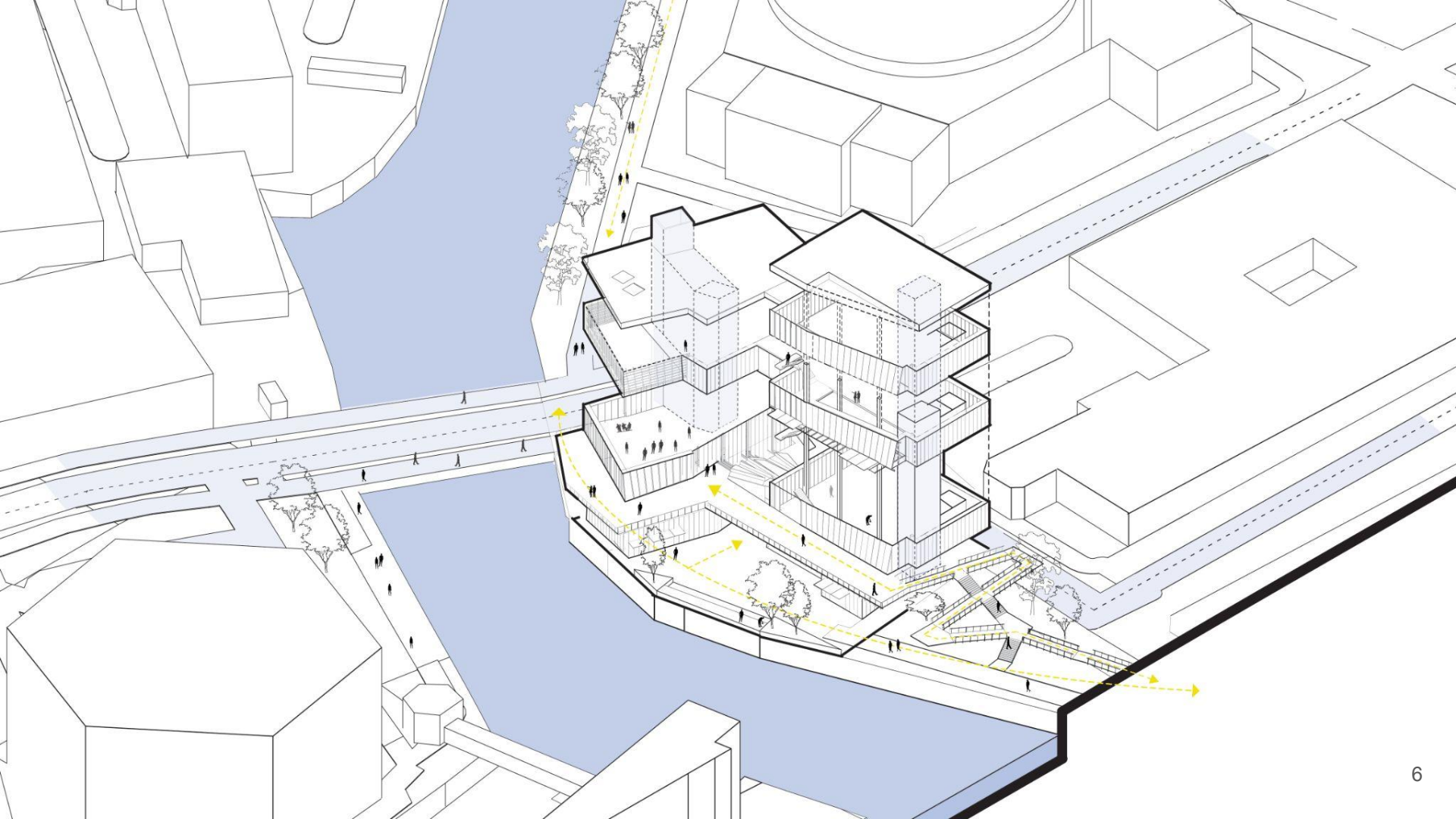
Our end goal is that our structure is considered part of the walkway rather than the reverse

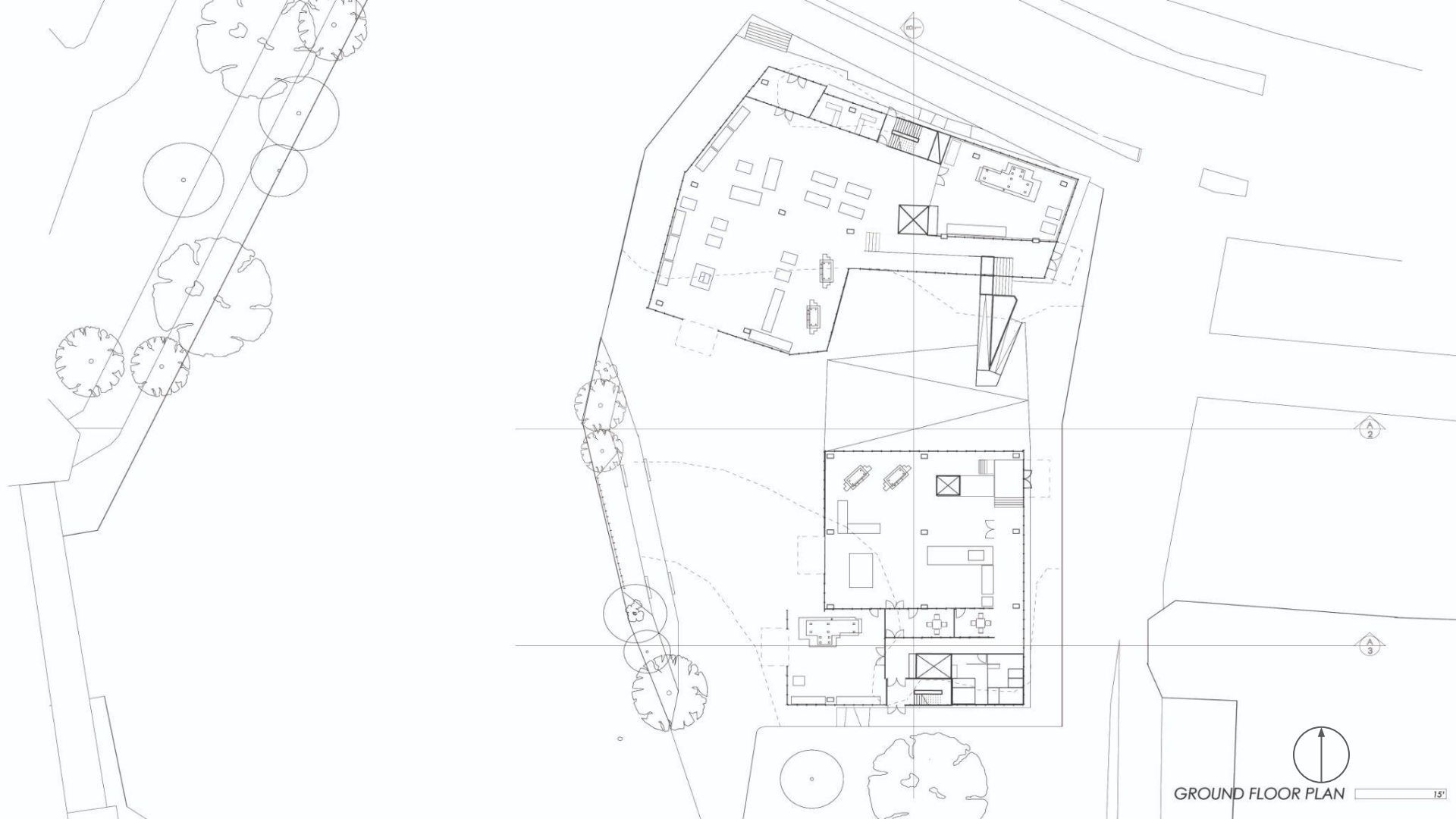
Materiality is representative - Wood symbolizes the greenery while the CMU brick wall symbolizes the connection to Lowell's architecture.





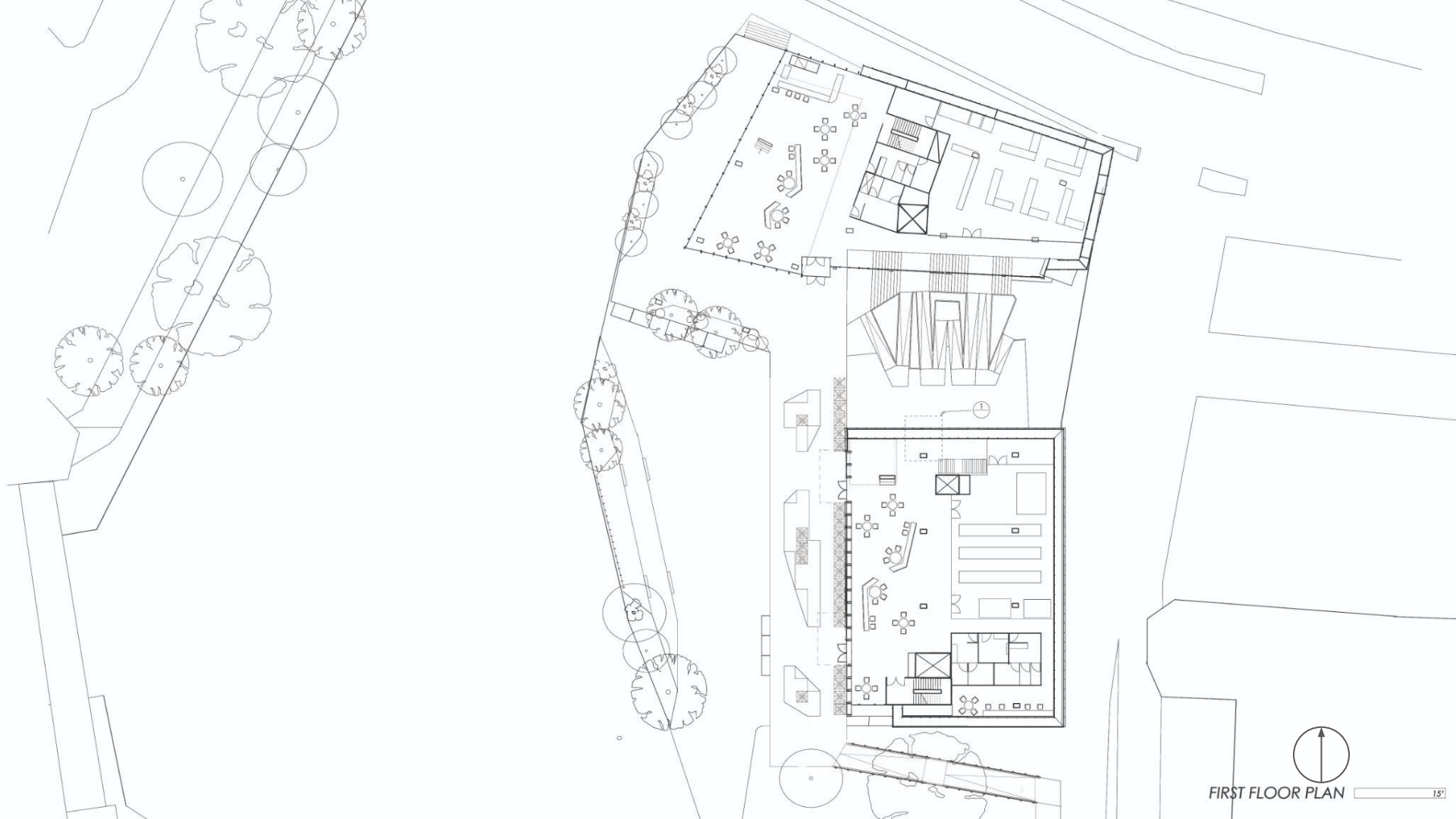




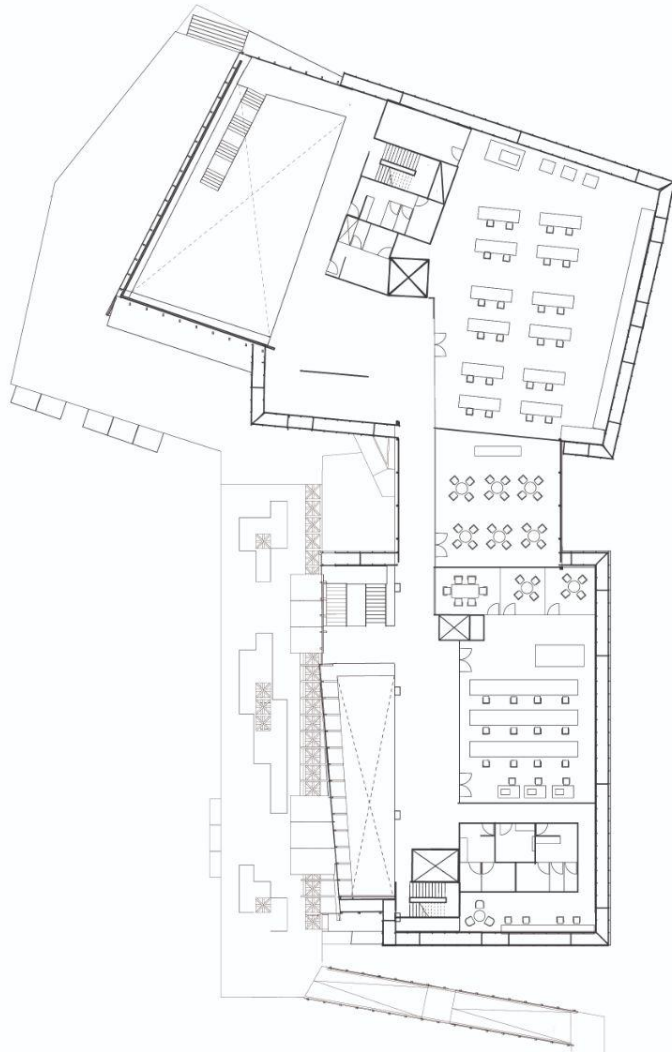


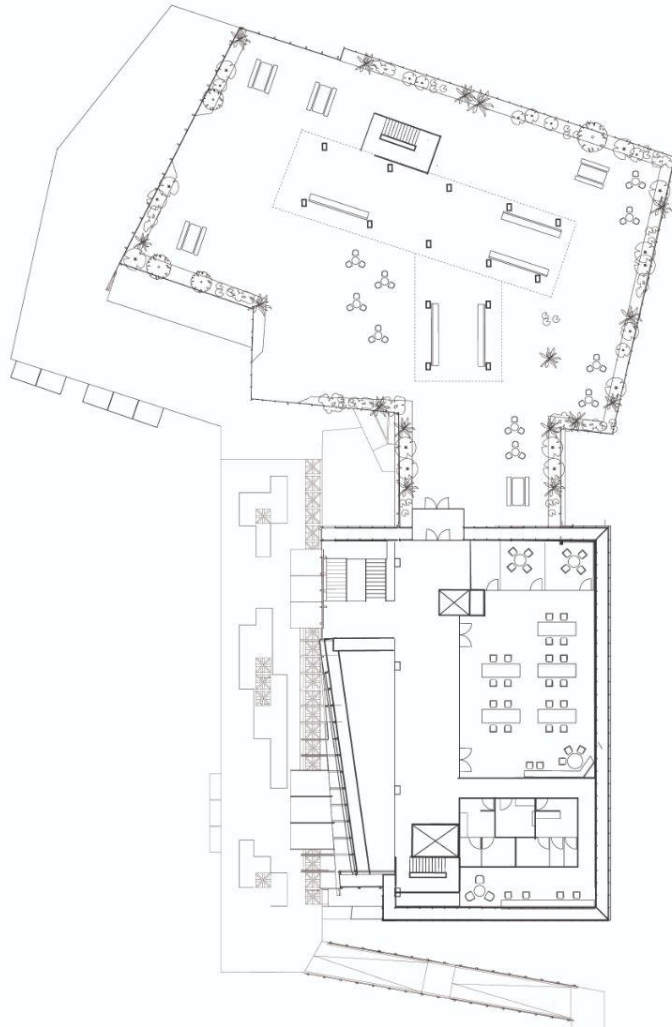
GROUND FLOOR PLAN

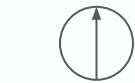
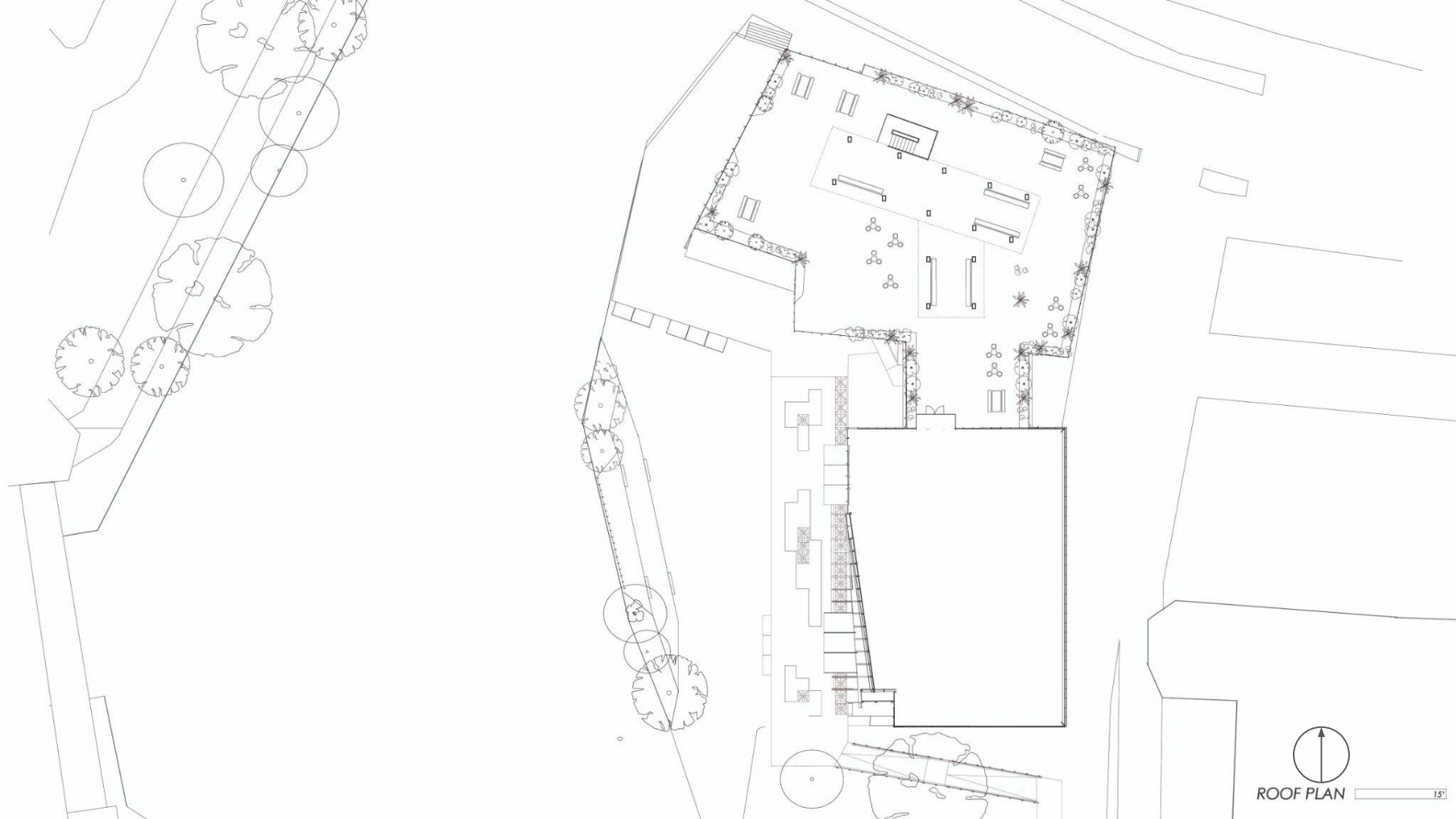
15'



FIRST FLOOR PLAN 15'

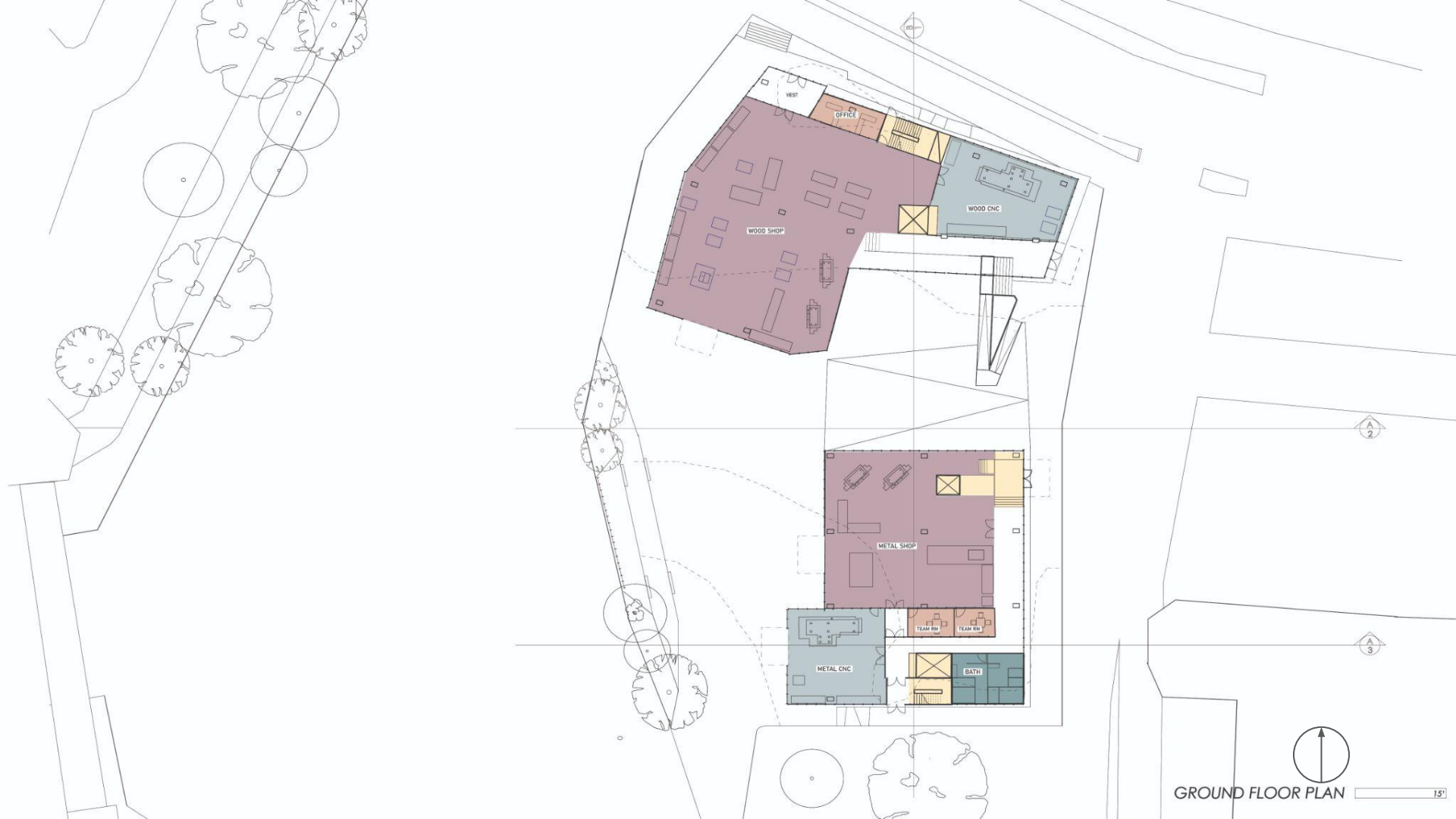






ROOF PLAN

15'



GROUND FLOOR PLAN  15'



CAFE

ATRIUM

BATH

CULINARY

CRAFTS SHOP

ATRIUM

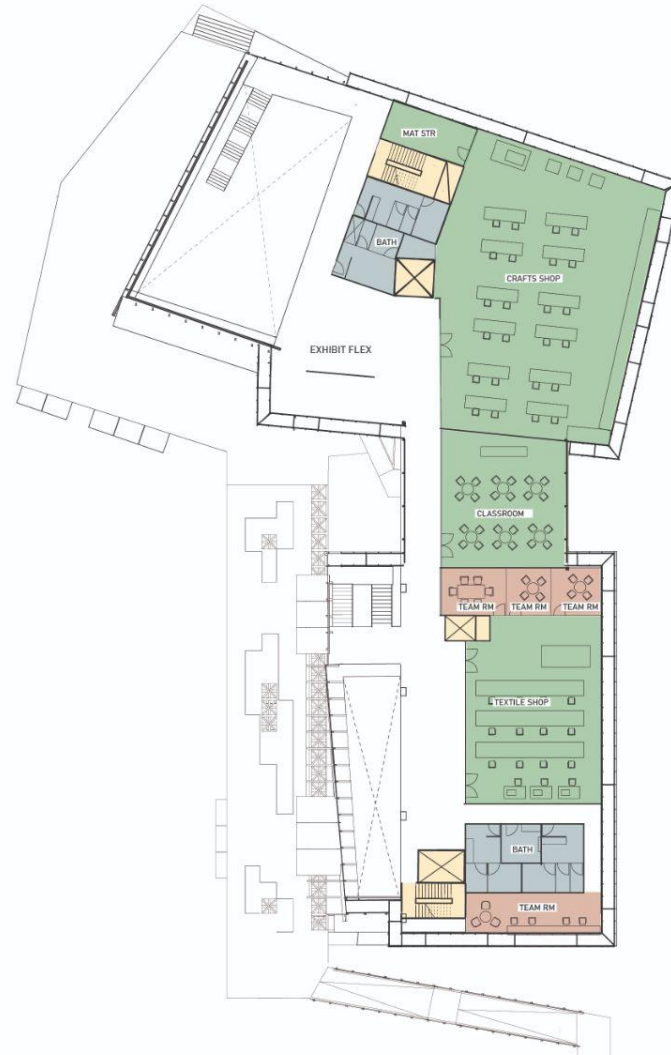
BATH

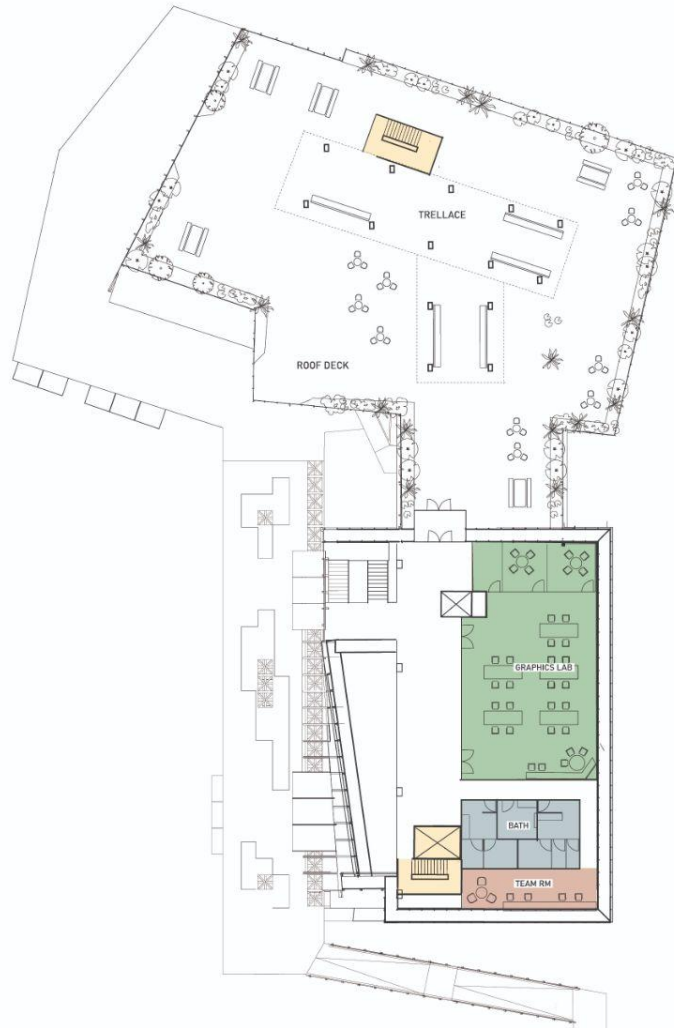
TEAM SPACE

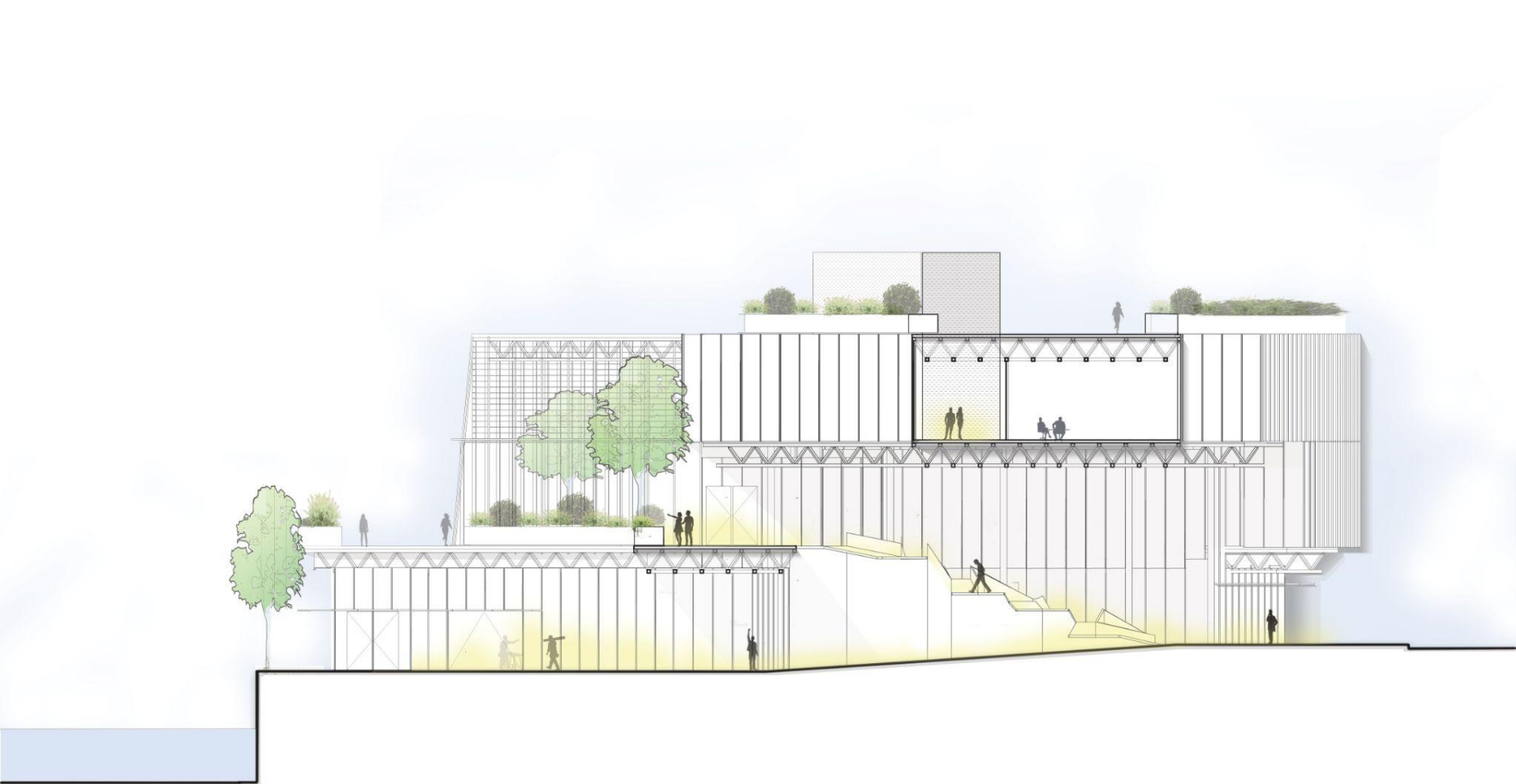


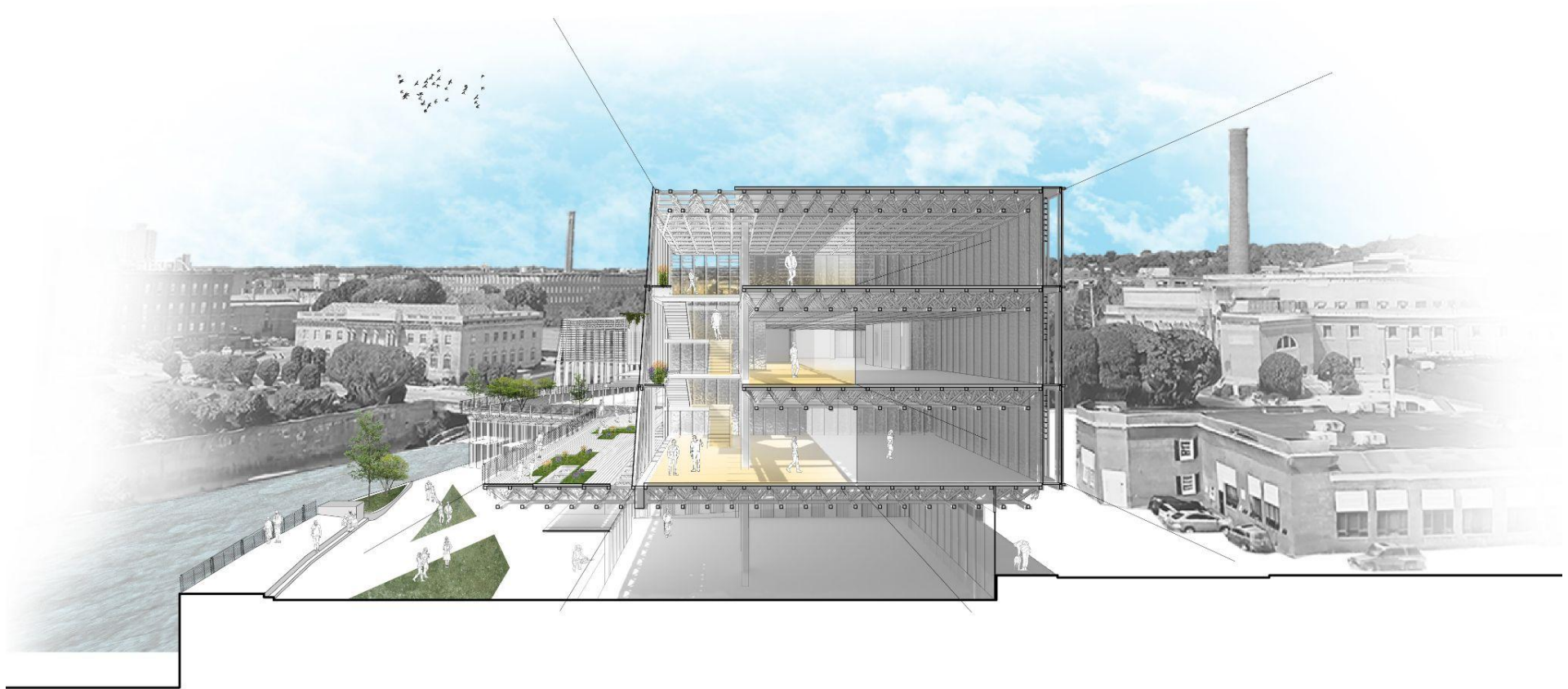
FIRST FLOOR PLAN

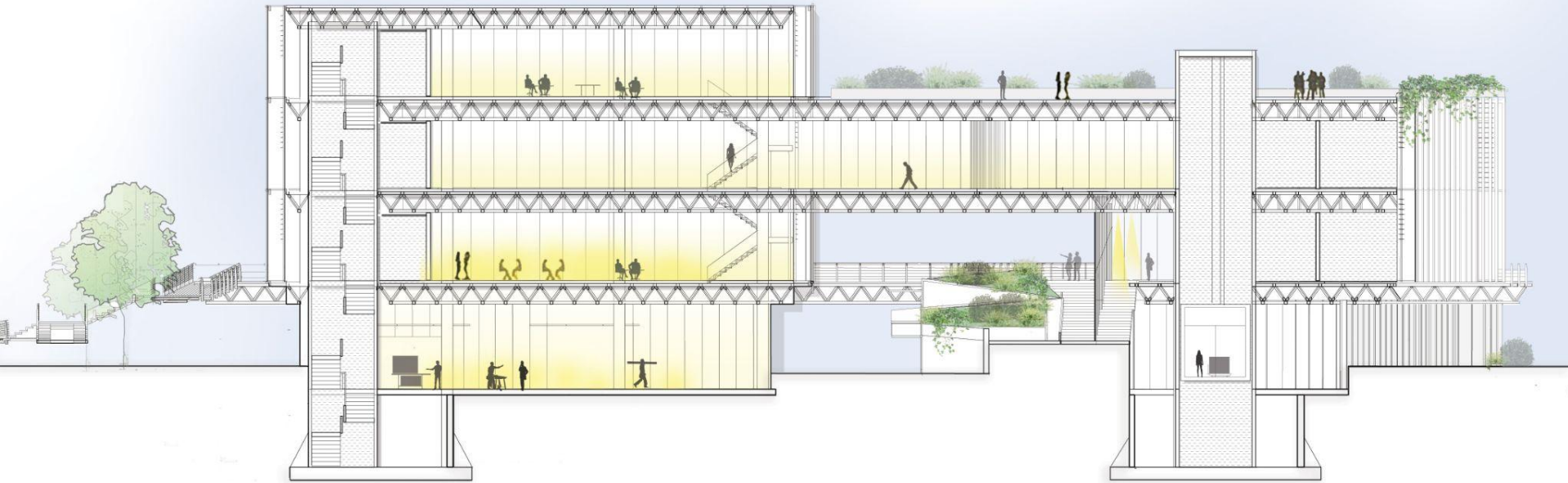
15'

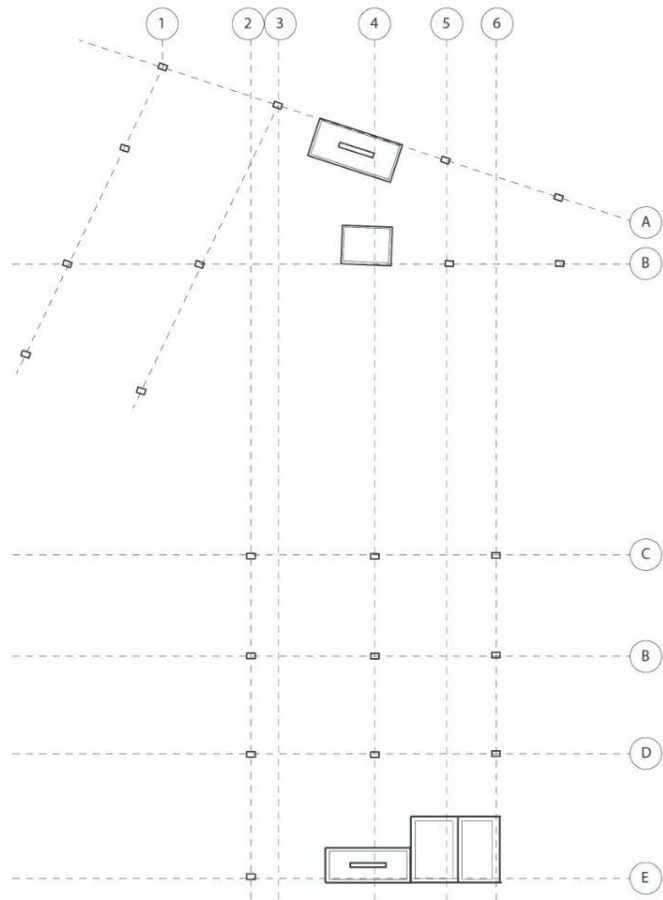


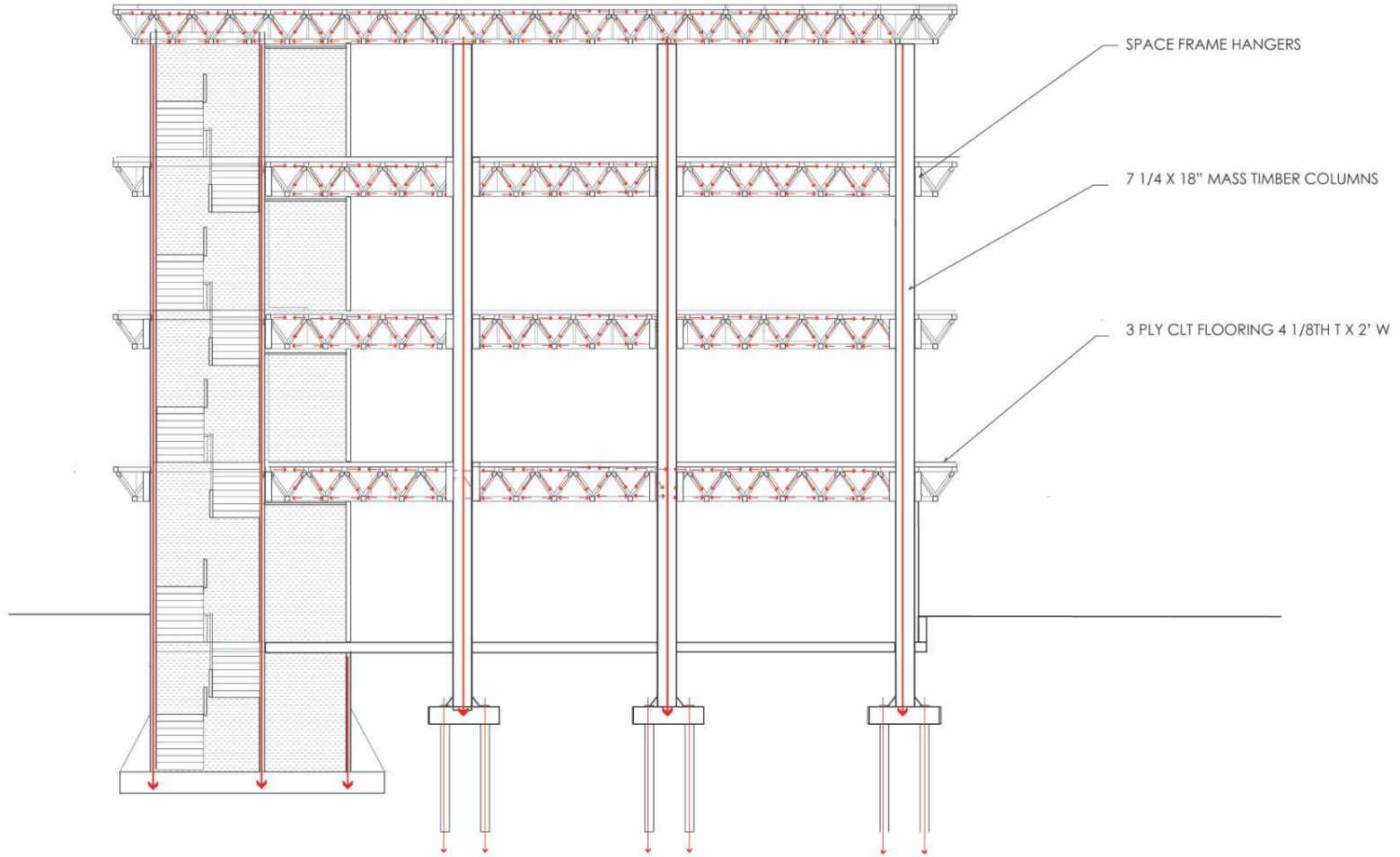


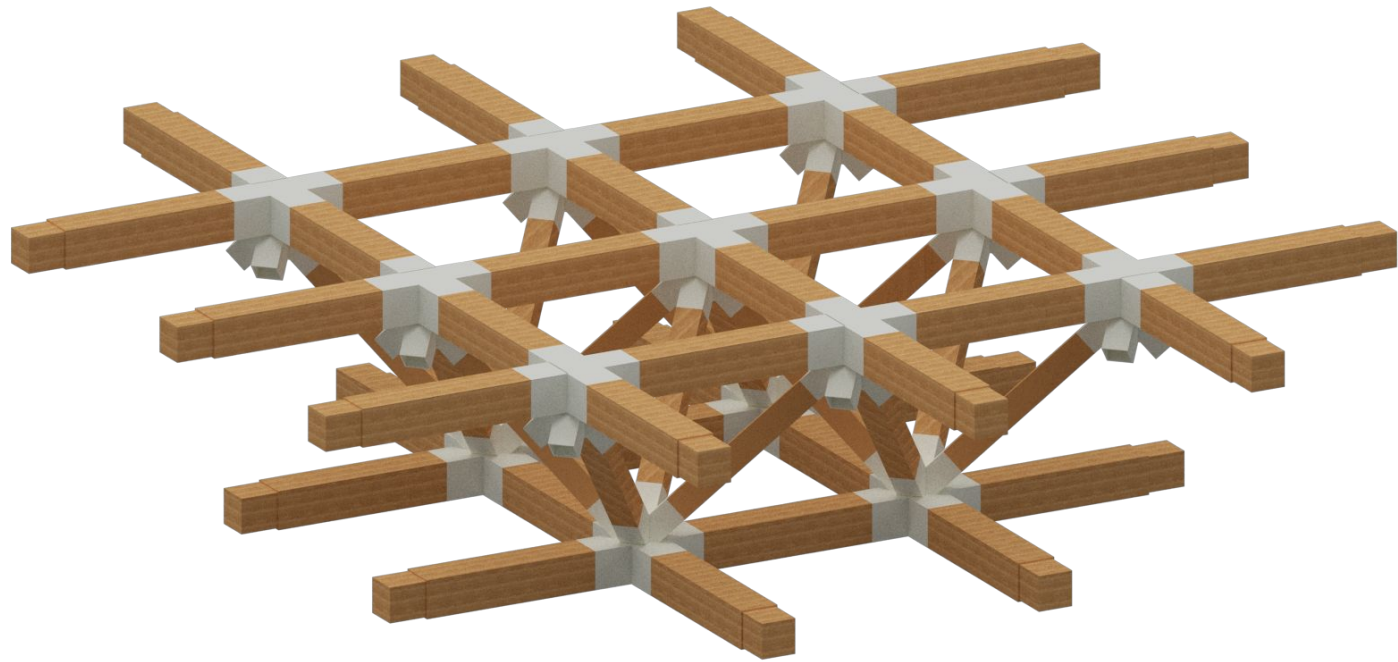


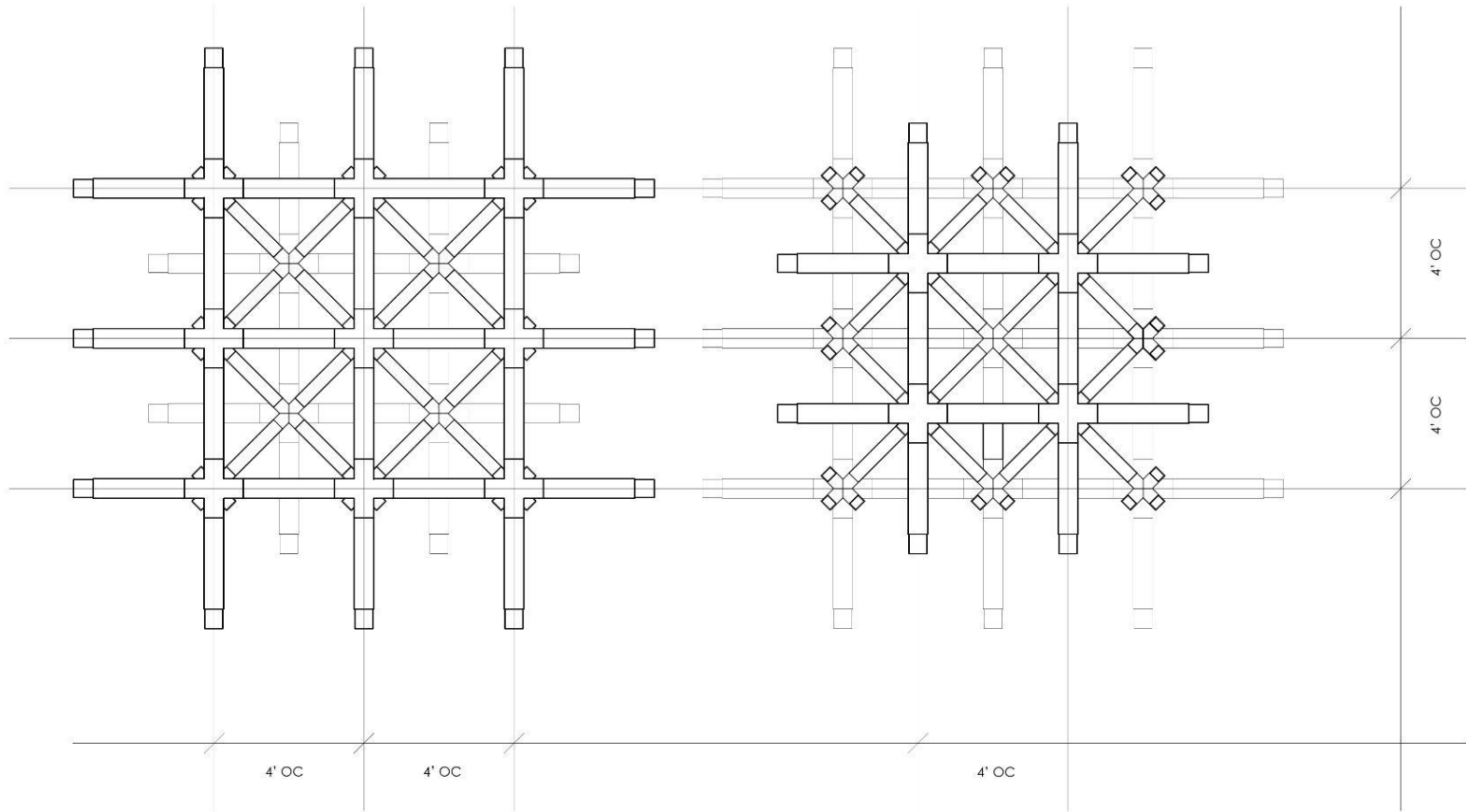


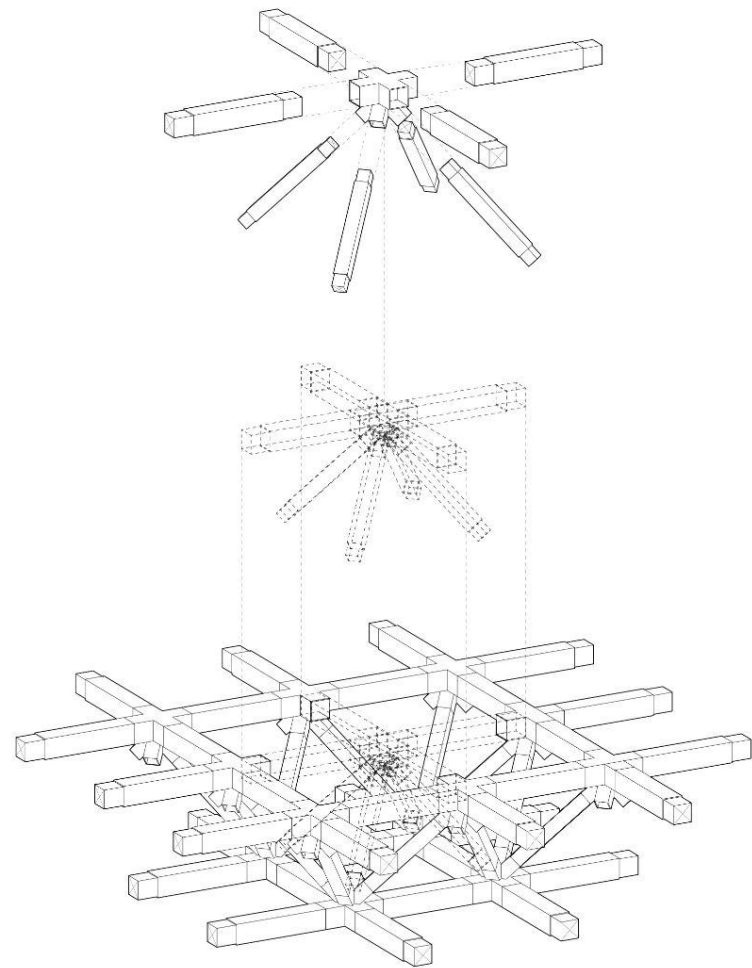
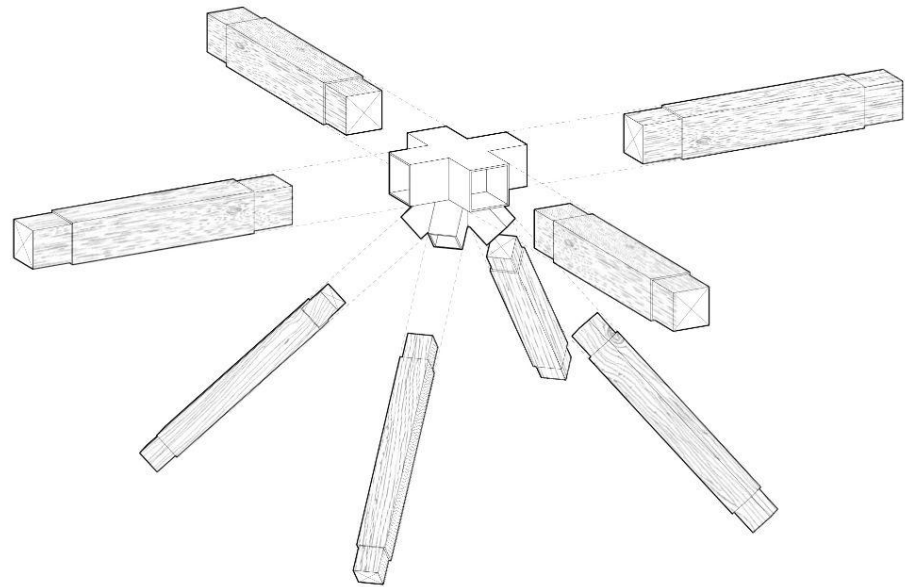


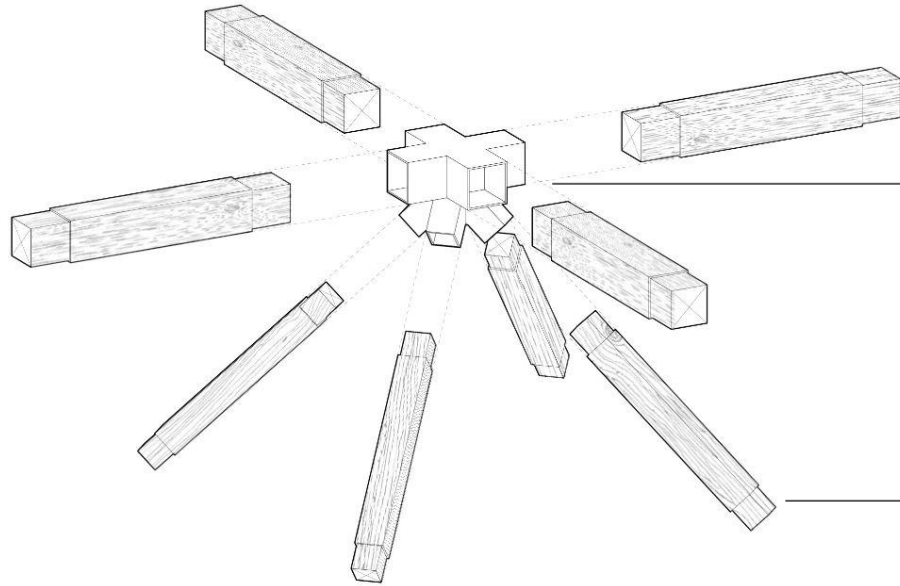








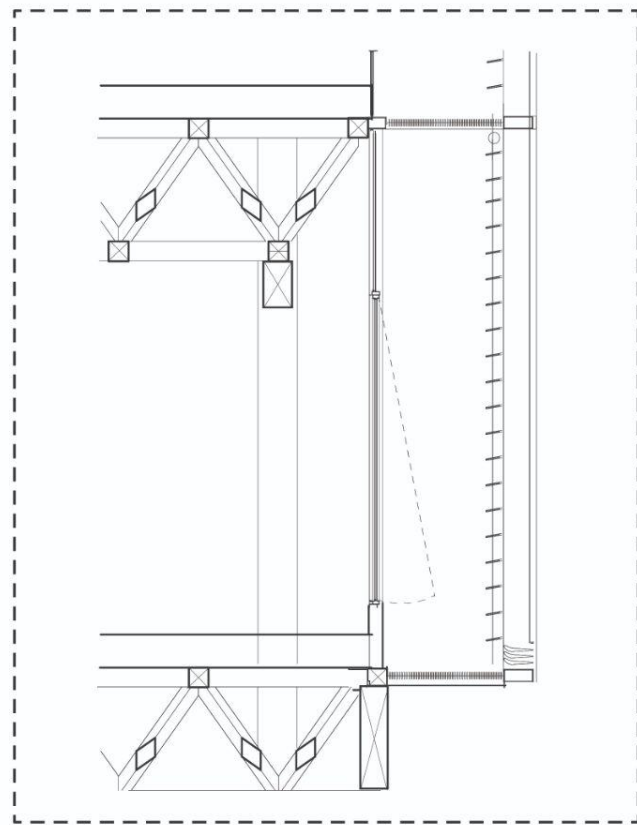
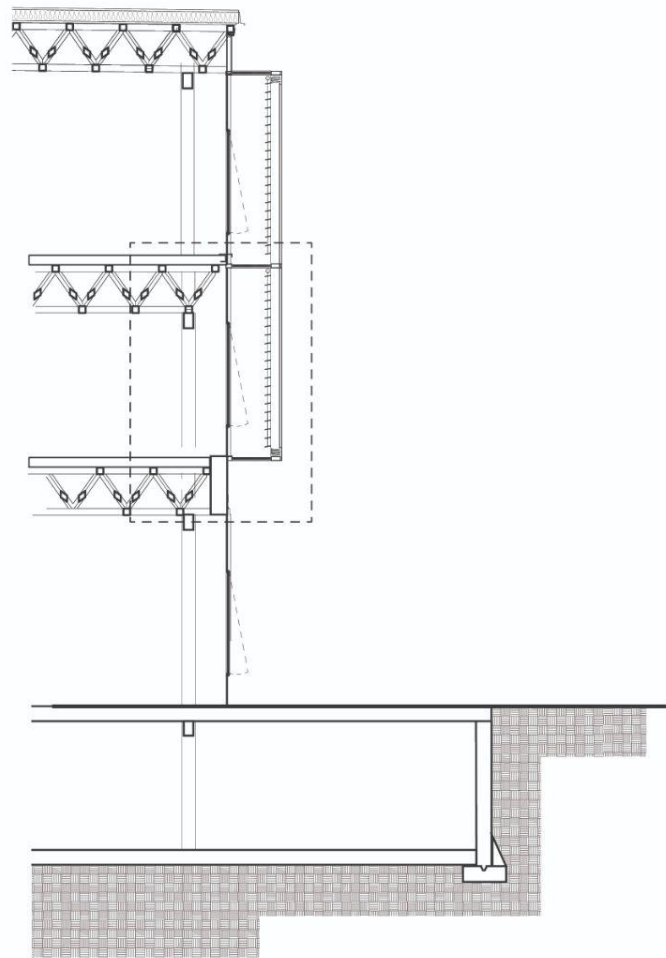




6" X 6" TIMBER MEMBERS

POWDER COATED STEEL COUPLER

4" X 4" TIMBER MEMBERS

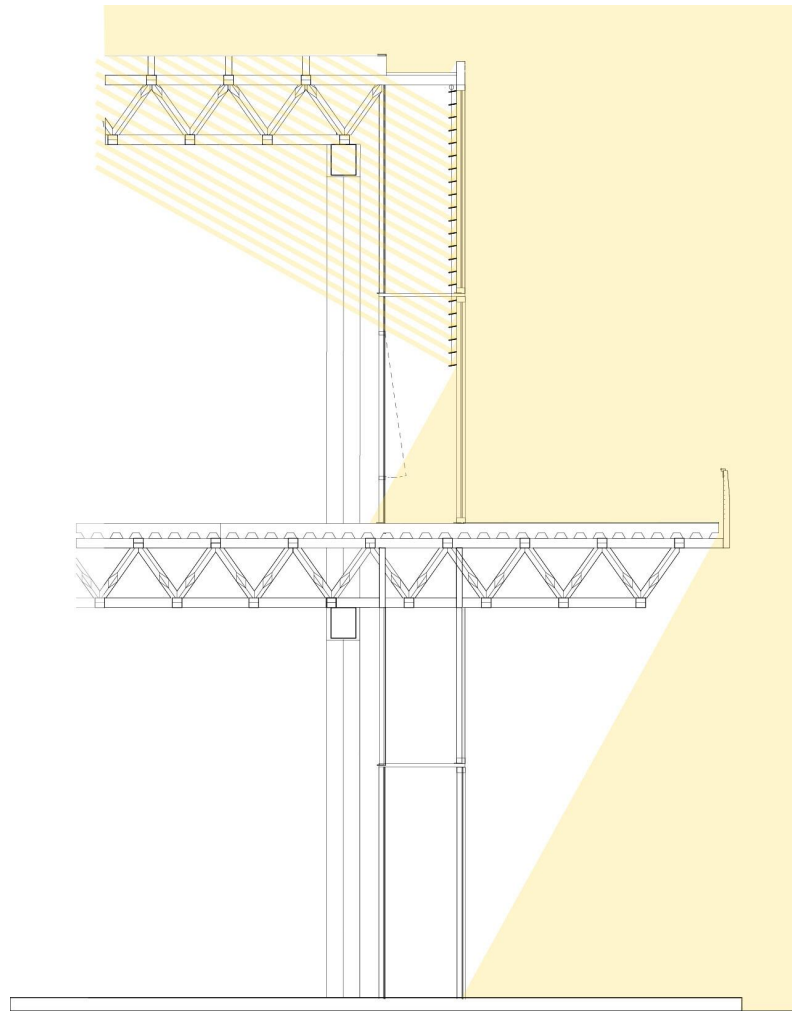


SUMMER DAYLIGHTING

June 20th

Summer Solstice

Altitude of Sun 61 degrees

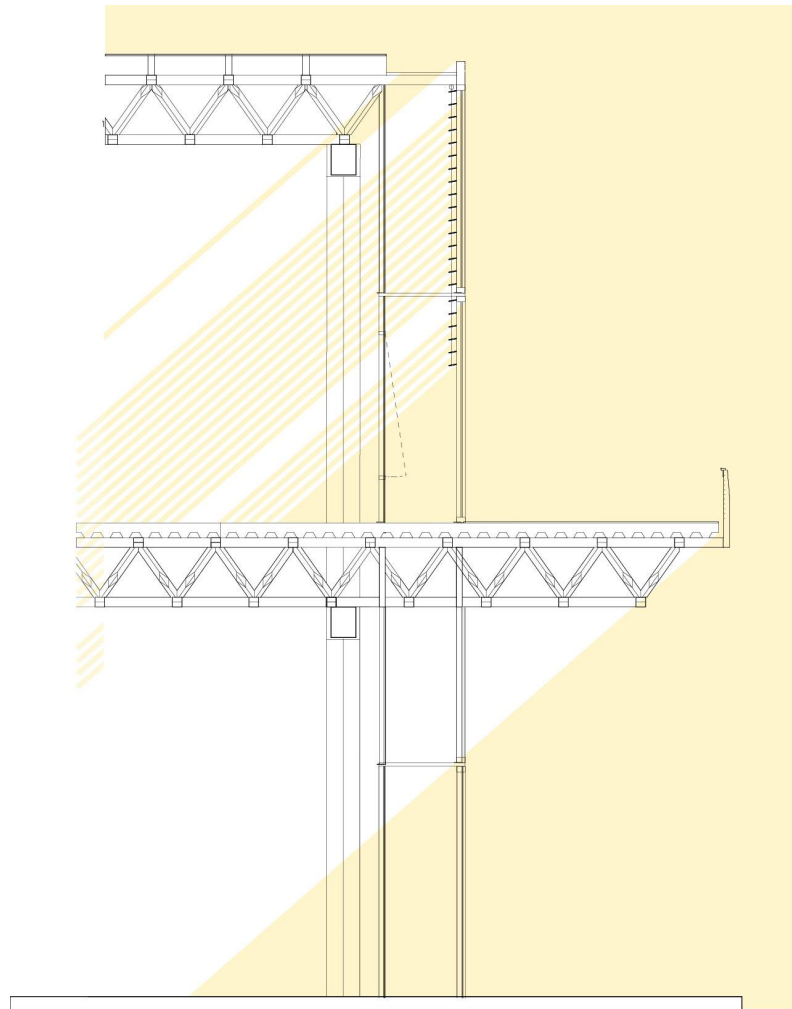


EQUINOX DAYLIGHTING

March 20th

Spring Equinox

Altitude of Sun 41 degrees

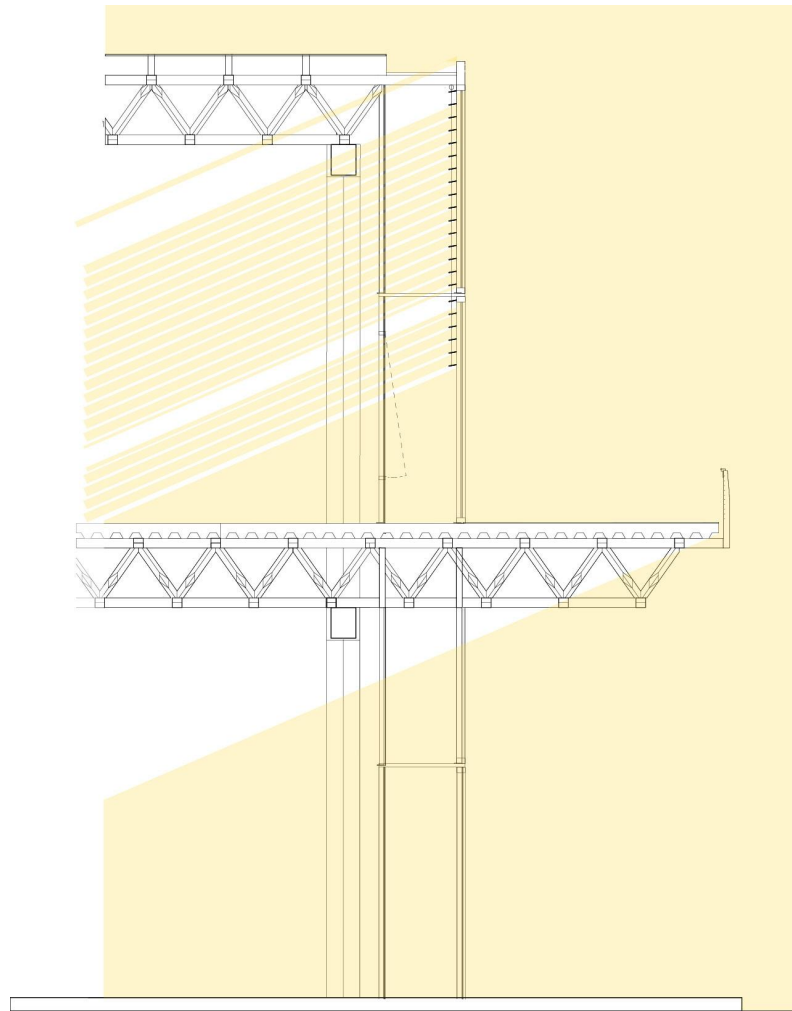


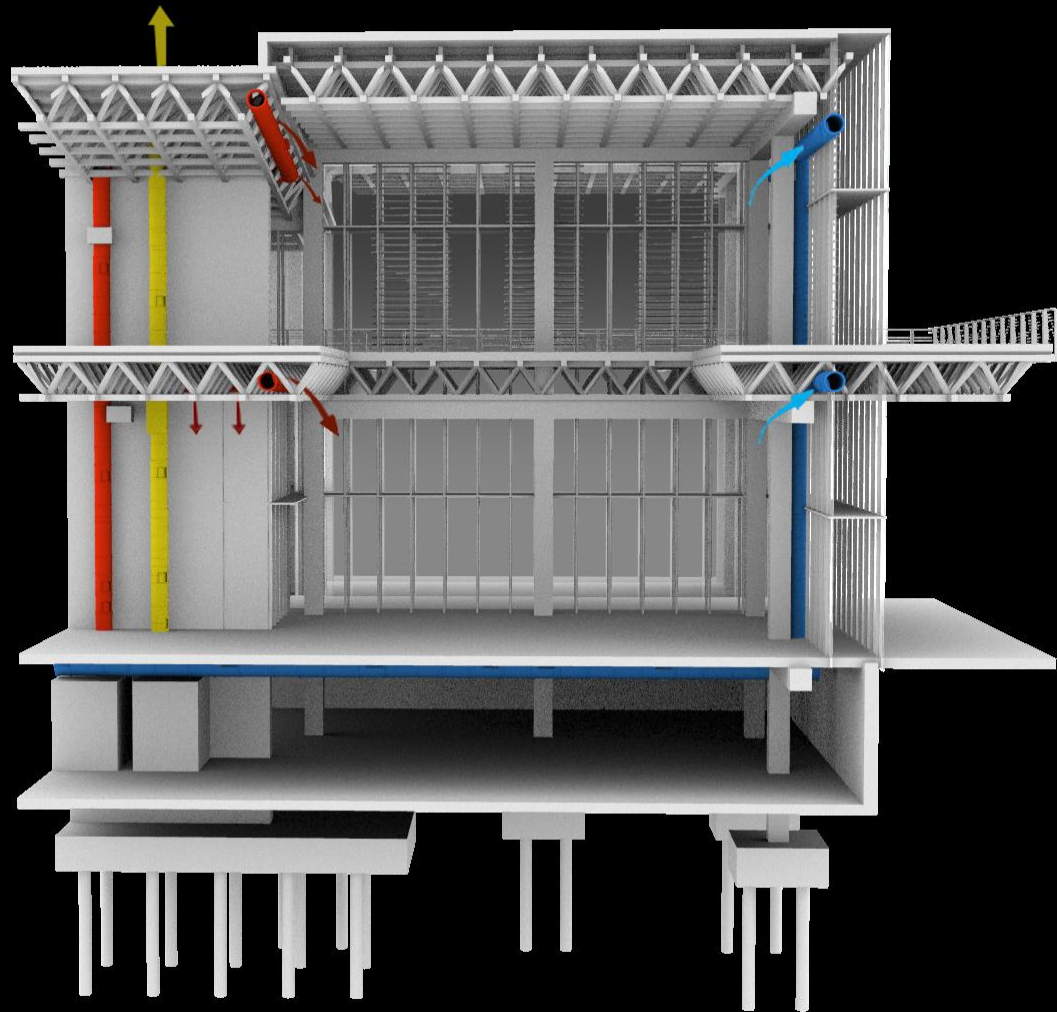
WINTER DAYLIGHTING

December 21st

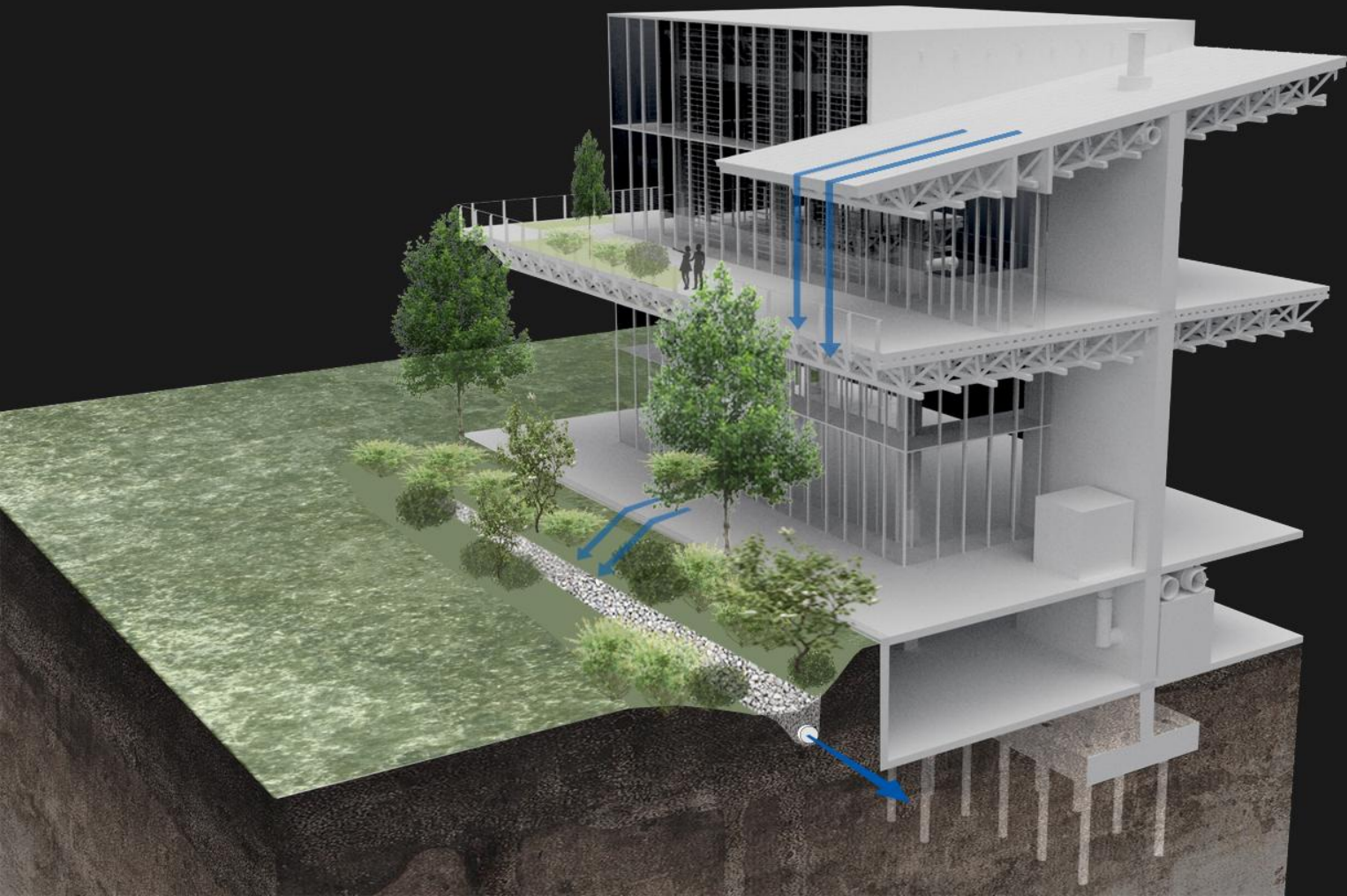
Winter Solstice

Altitude of Sun 23 degrees





HVAC CIRCULATION



RAIN WATER RUNOFF

ROOF TOP GARDENS

STORM WATER MANAGEMENT IS ENHANCED THROUGH THE UTILIZATION OF RUNOFF FOR IRRIGATION

BIOSWALE

BIOSWALES DIRECT THE PATH OF RUNOFF INTO SMALL WET LANDS, IRRIGATING GREENERY AND FUNNELING CLEANER WATER INTO THE LOCAL SEWER SYSTEM AND EVENTUALLY THE RIVER



