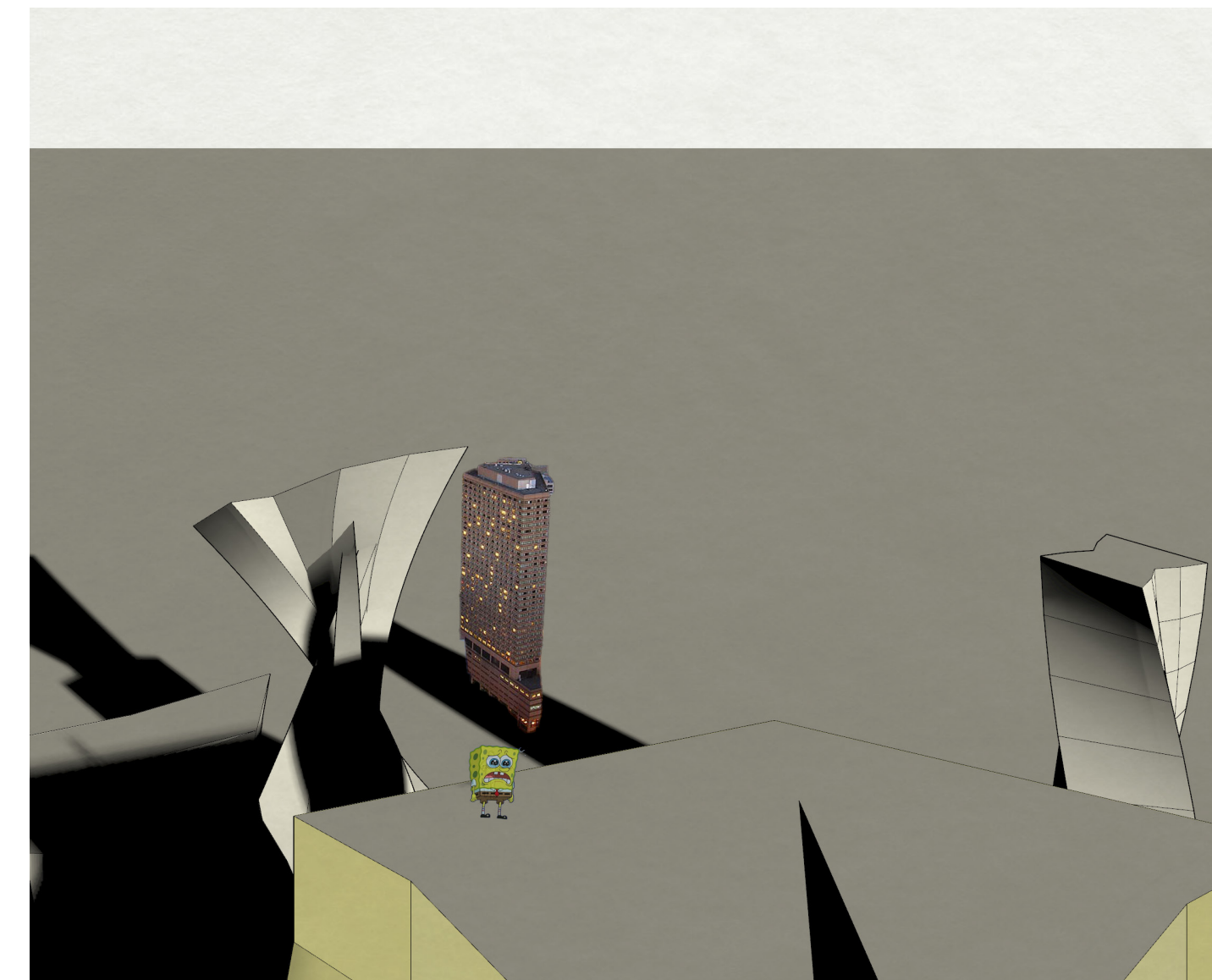
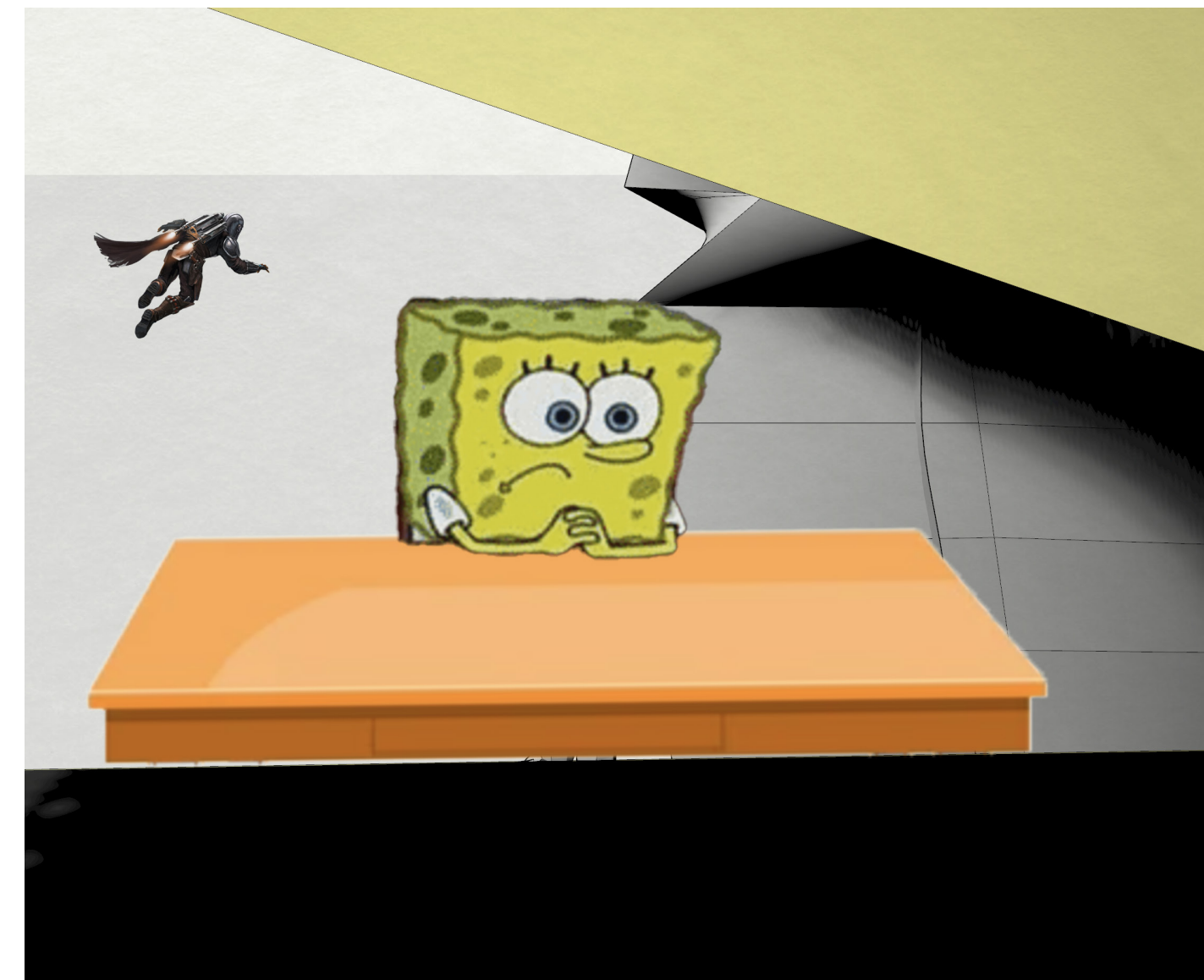
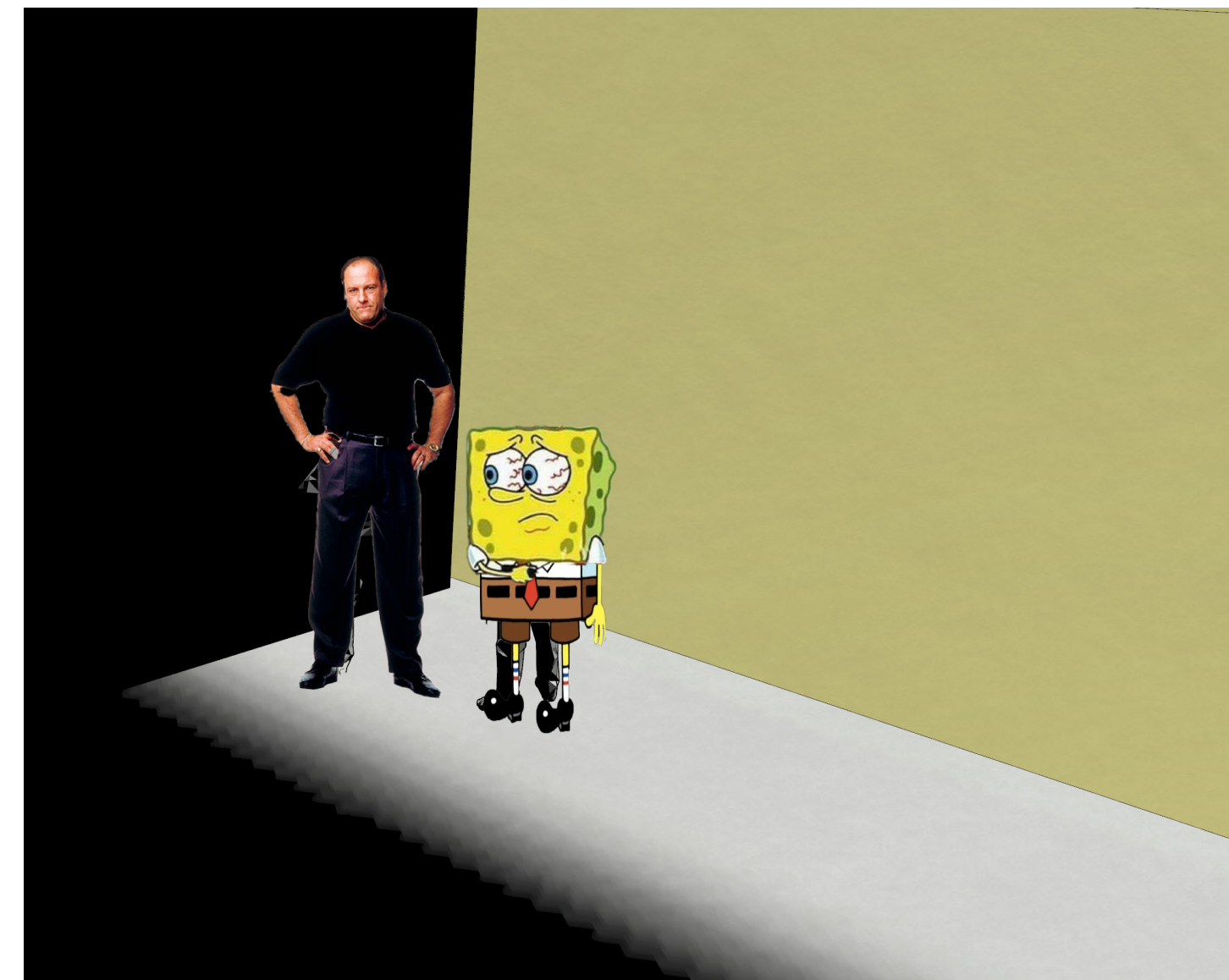
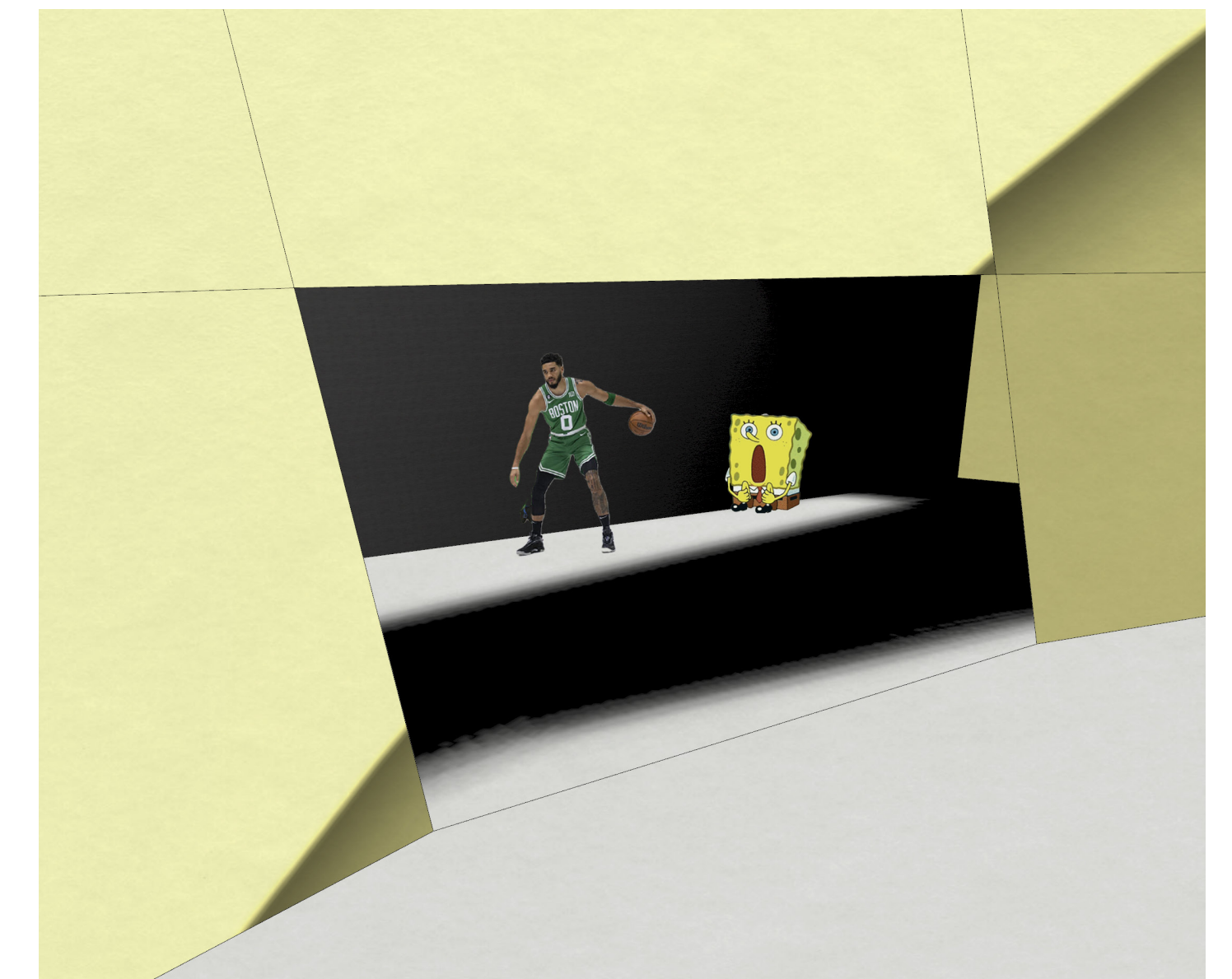
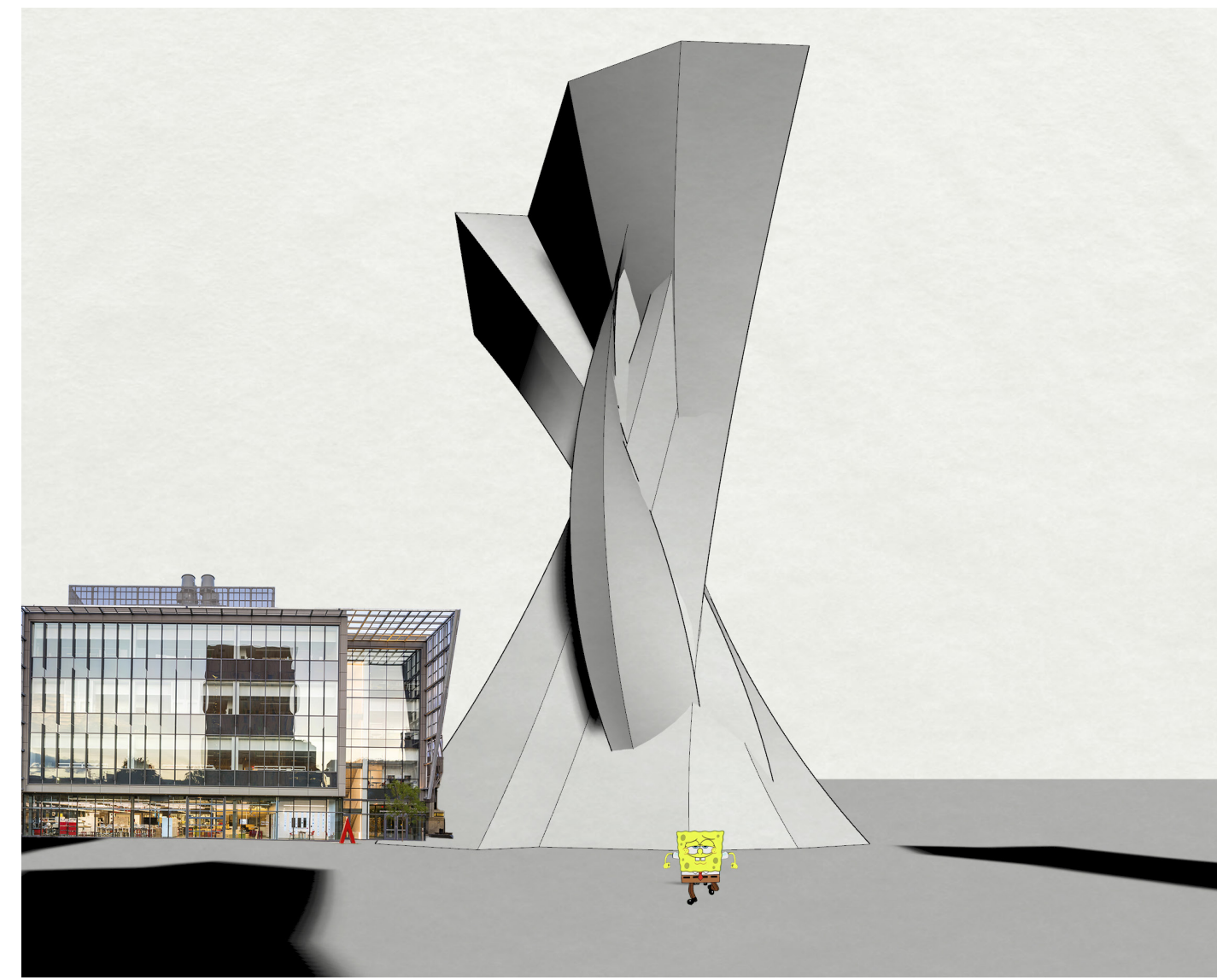


## P2: COMPOSITE PERSPECTIVES

My project tells a story of a person who comes to the big city for a new job. They are astonished by the tall buildings and how massive the city is. Despite this enthusiasm, their potential employer is not as impressed by them. The main character is put into a dark room rather than a nice lobby and treated as an after thought. Finally they come up to interview, but ultimately don't get the job. The main character looks over the horizon from the top of the building contemplating their choices. In the end they leave the city with their dreams crushed to never return again.



## P2: COMPOSITE PERSPECTIVES

I photoshopped Spongebob in as the place of the person who doesn't get the job to add more emotional and meaning to the story. Spongebob graduates from WIT excited to join the workforce. Wally supports him because he's nervous. When he looks at the tall building it's as if he's facing a dragon. He gets excited waiting in the lobby, but once he meets the boss he becomes nervous and intimidated. Because of this he messes up his interview and doesn't get the job. He cries on the roof while overlooking the city. He walks back home sad and dissapointed.