

Joan and Edgar Booth Theater

Concept: "create a 21st century learning environment to educate the next generation of artists and engage audiences in an immersive experience." -BU.edu

"To hold, as 'twere, the mirror up to nature."
-Hamlet, act 3, scene 2

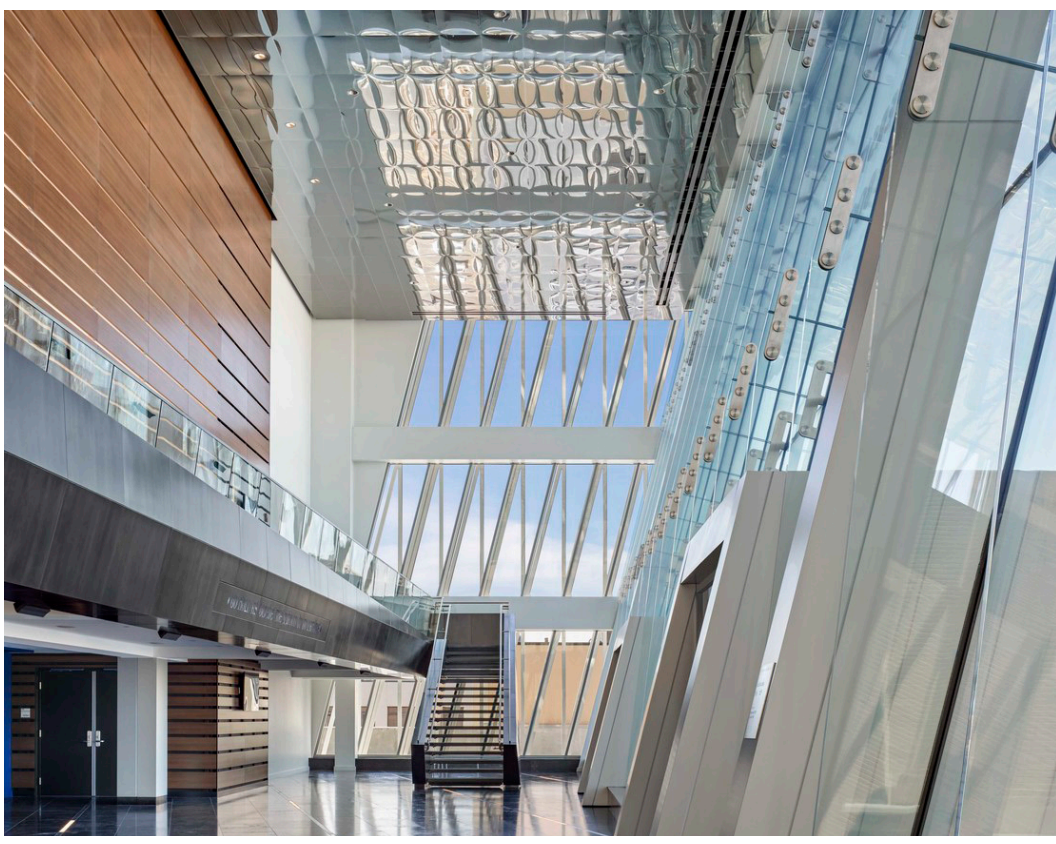
Factual Data:

Architects: Elkus | Manfredi Architects
Completed in the winter of 2018

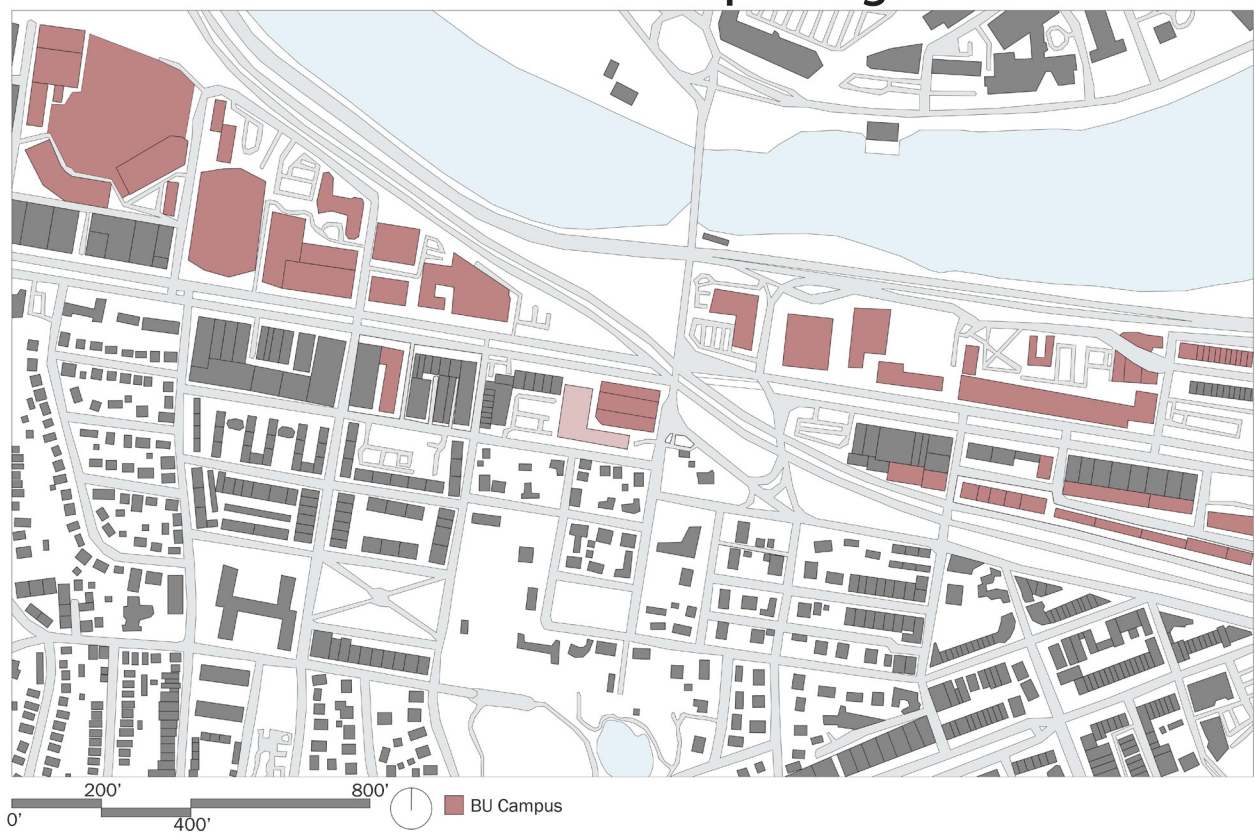
Location: Charles River Campus, Boston, MA

The tilted facade "acts as a mirror" that puts passersby "on

Criticism: There were some challenges in the building of the theater. Elkus Manfredi Architects worked with BU to create phases to the construction process so as to not disrupt the campus and community. The Joan Edgar Booth Theater was completed by November 2017 and is located in the Arts Corridor of the BU campus, an inviting location promoting community, students, faculty, and staff interest.



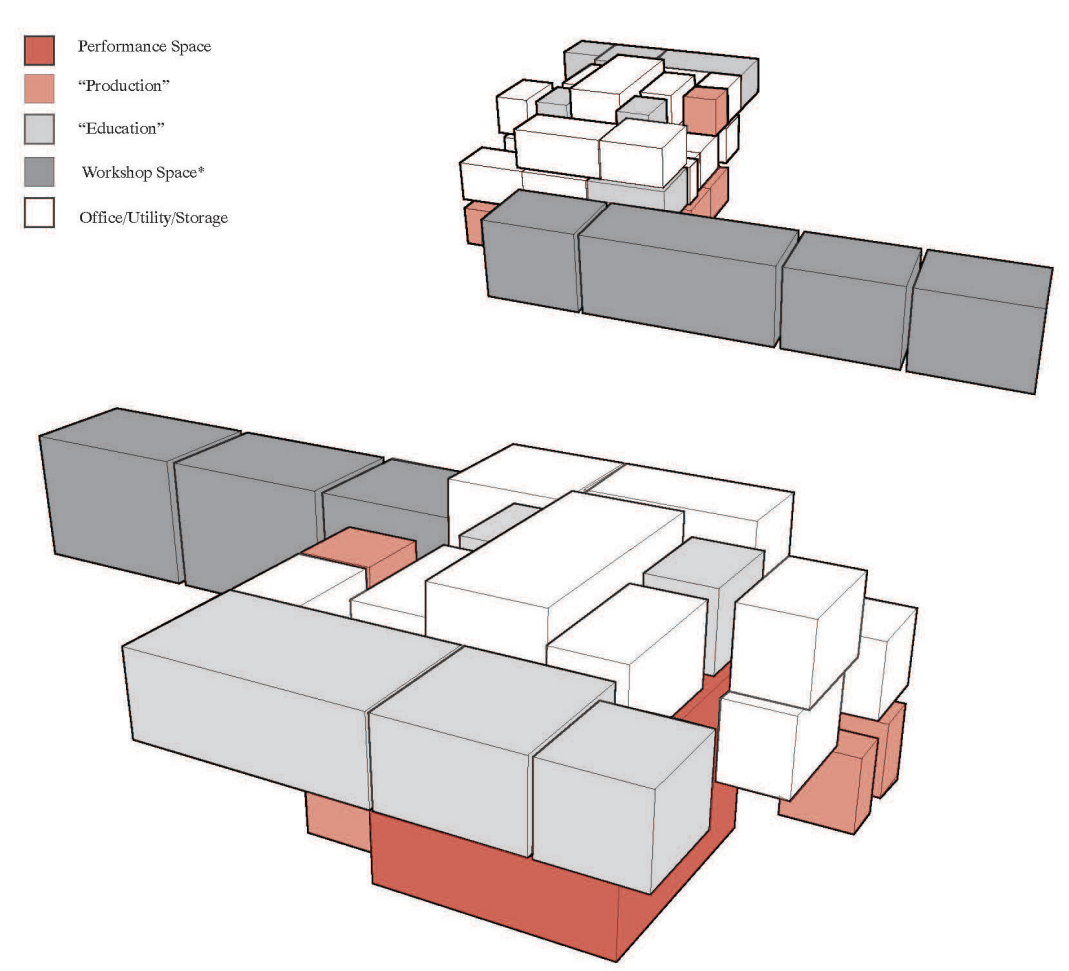
Contextual Relationships Diagram



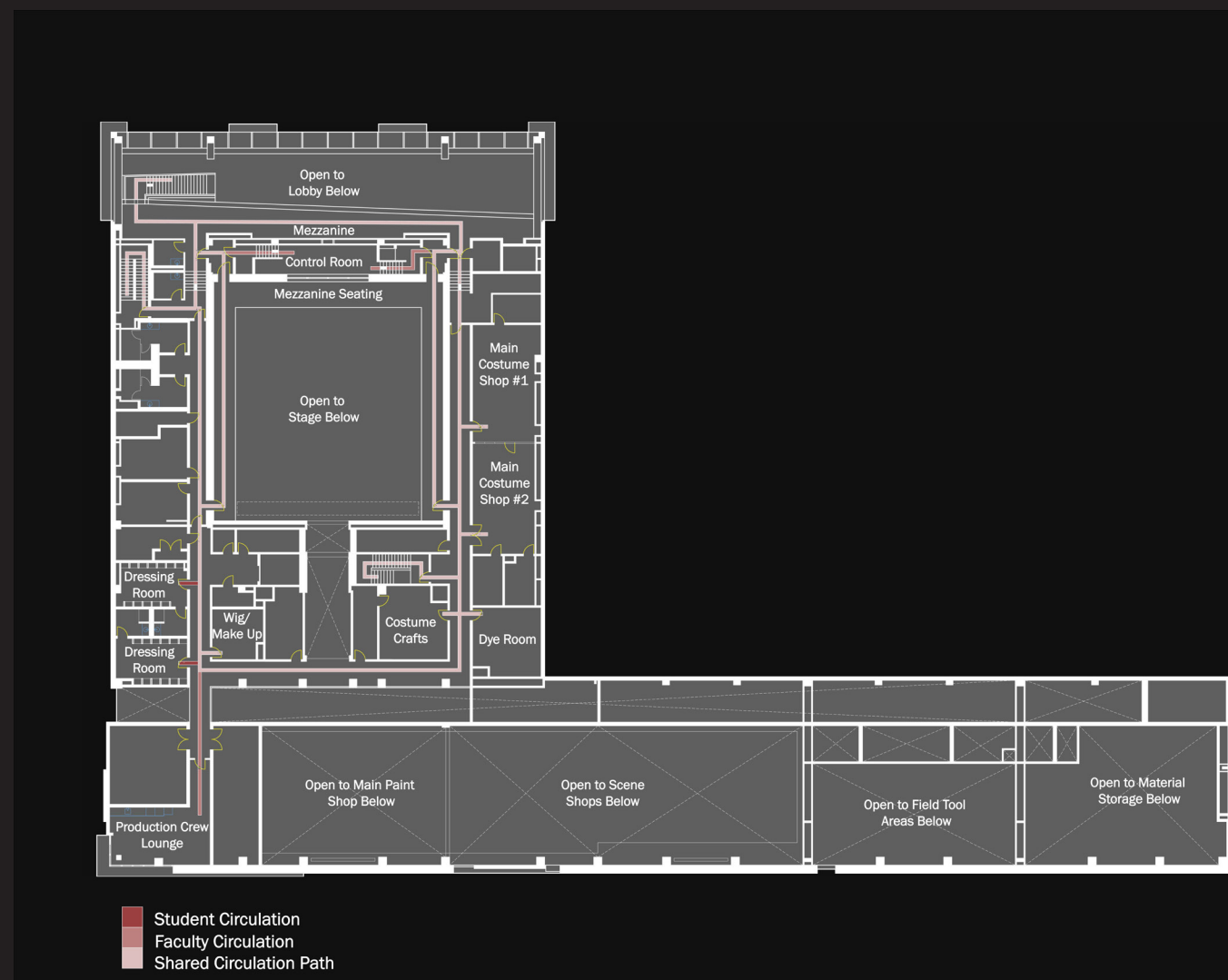
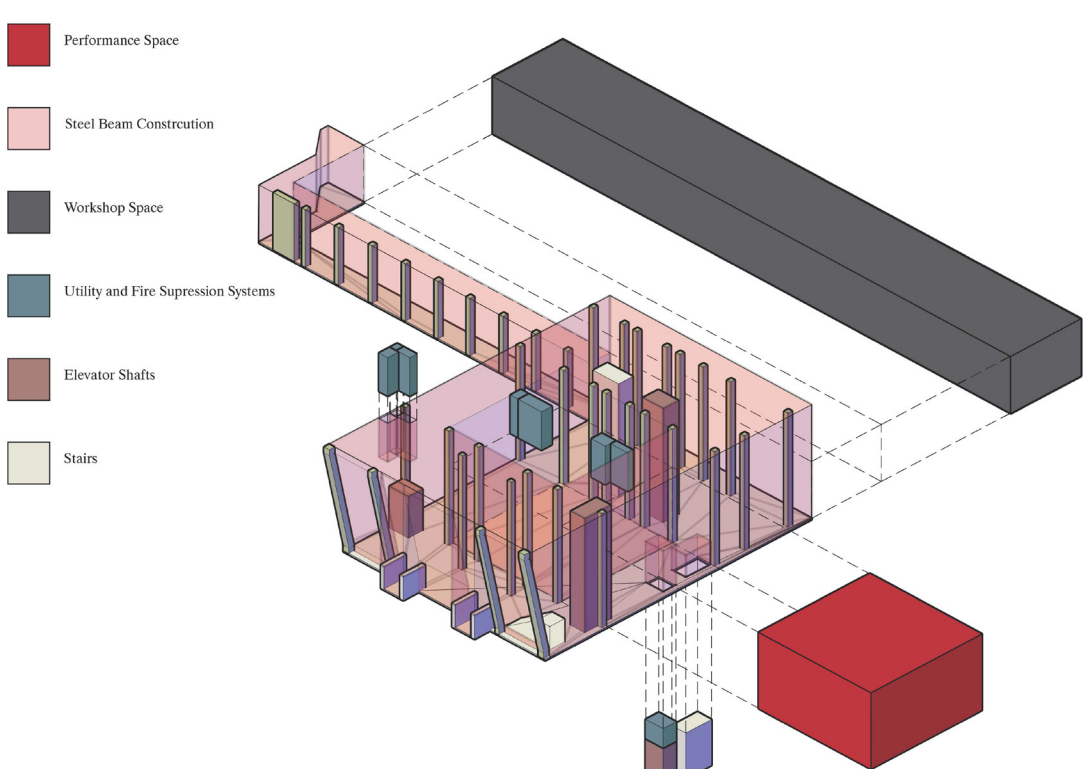
Access Diagram



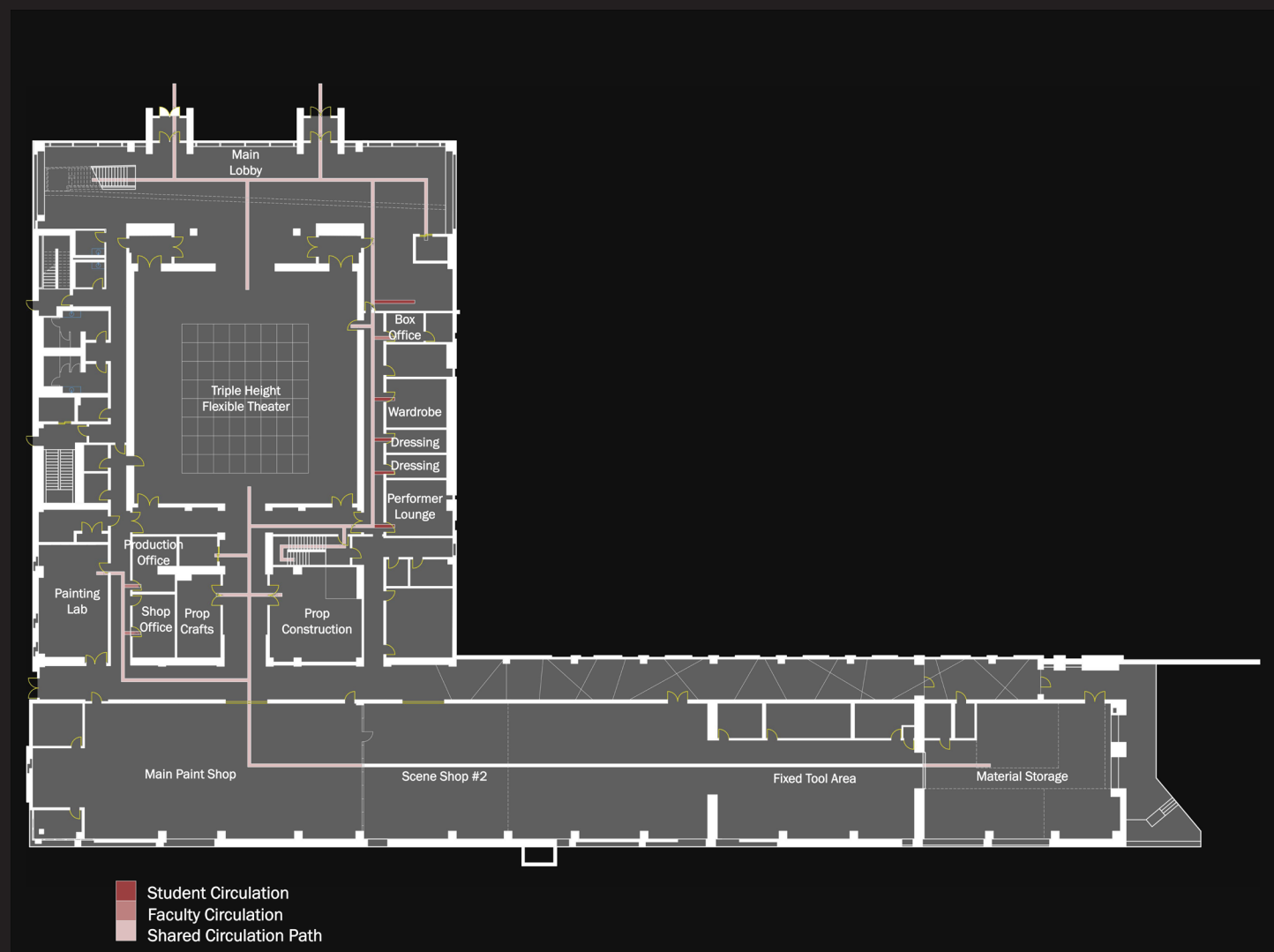
Progmatic Diagram



Structure Diagram



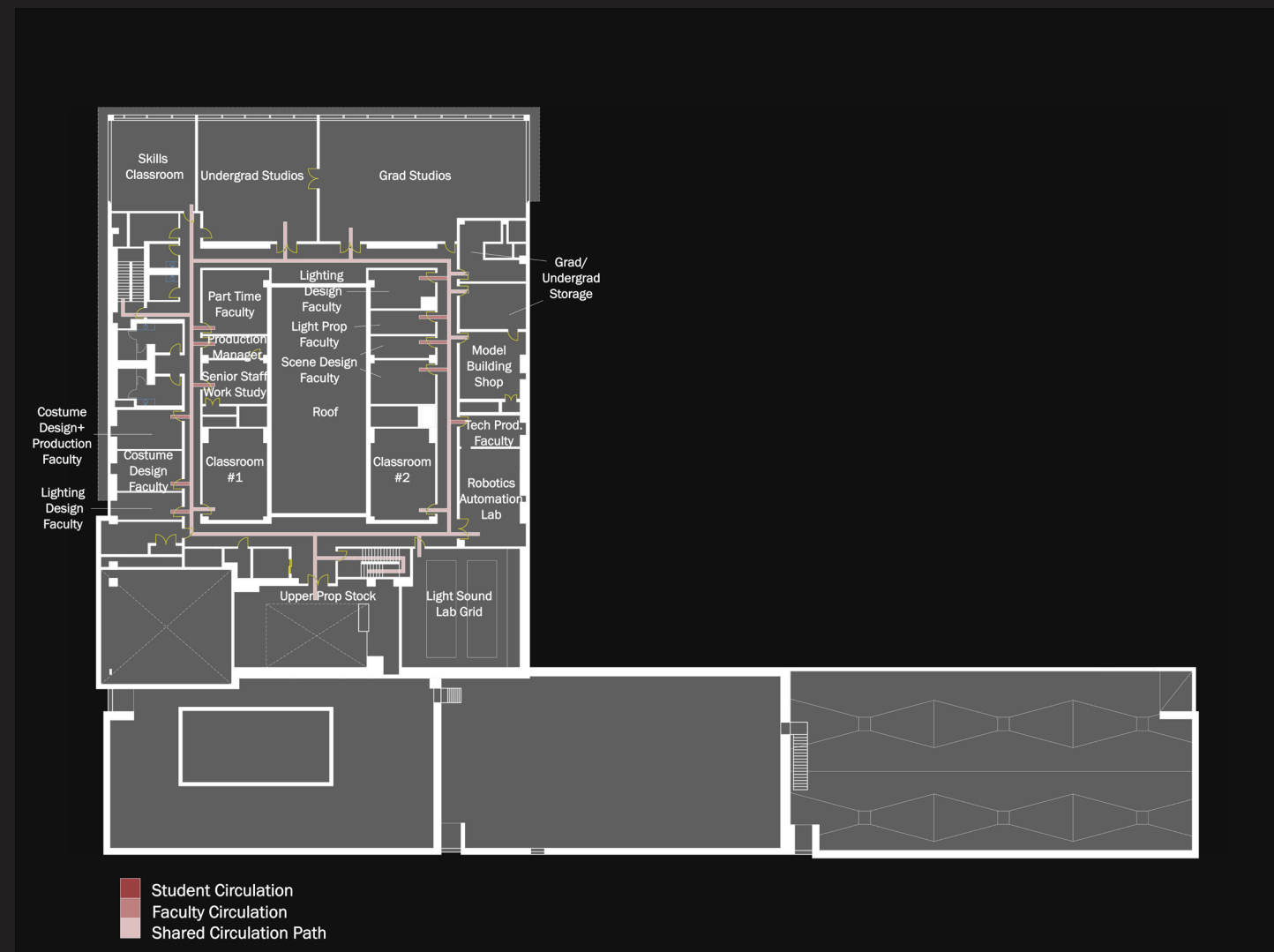
Ground Floor



First Floor



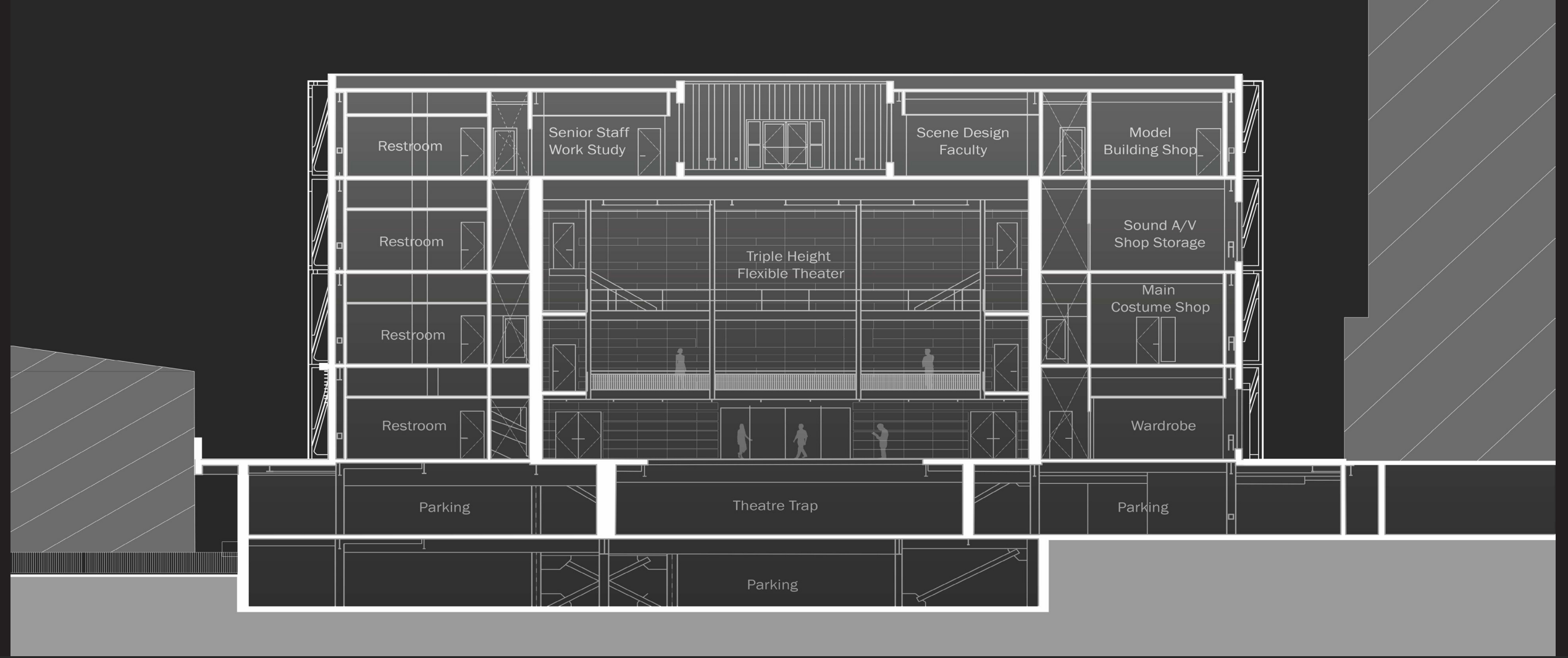
Second Floor



Third Floor

East-West Section

Scale: 1/8" = 1'-0"

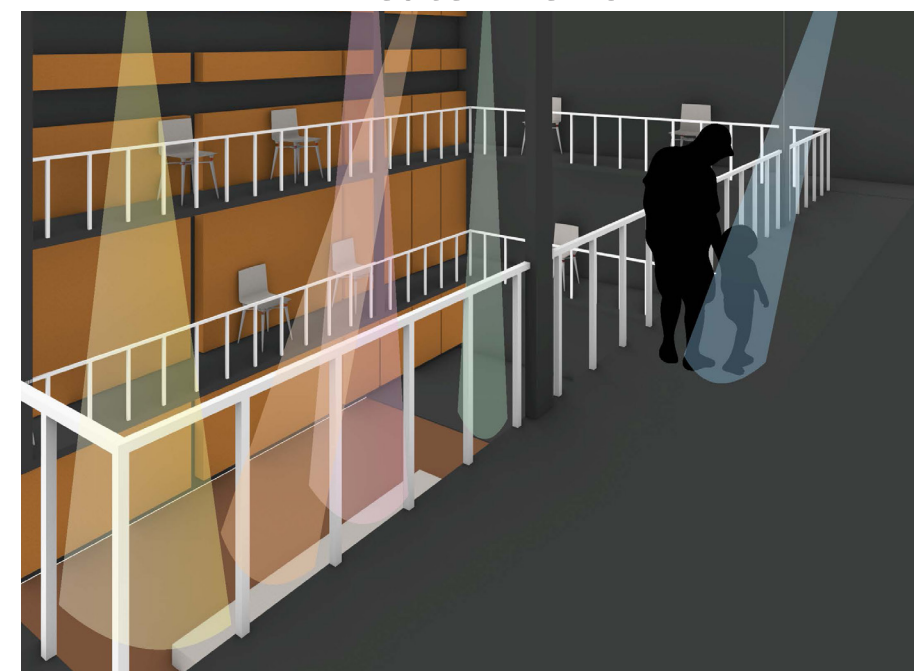


North-South Section

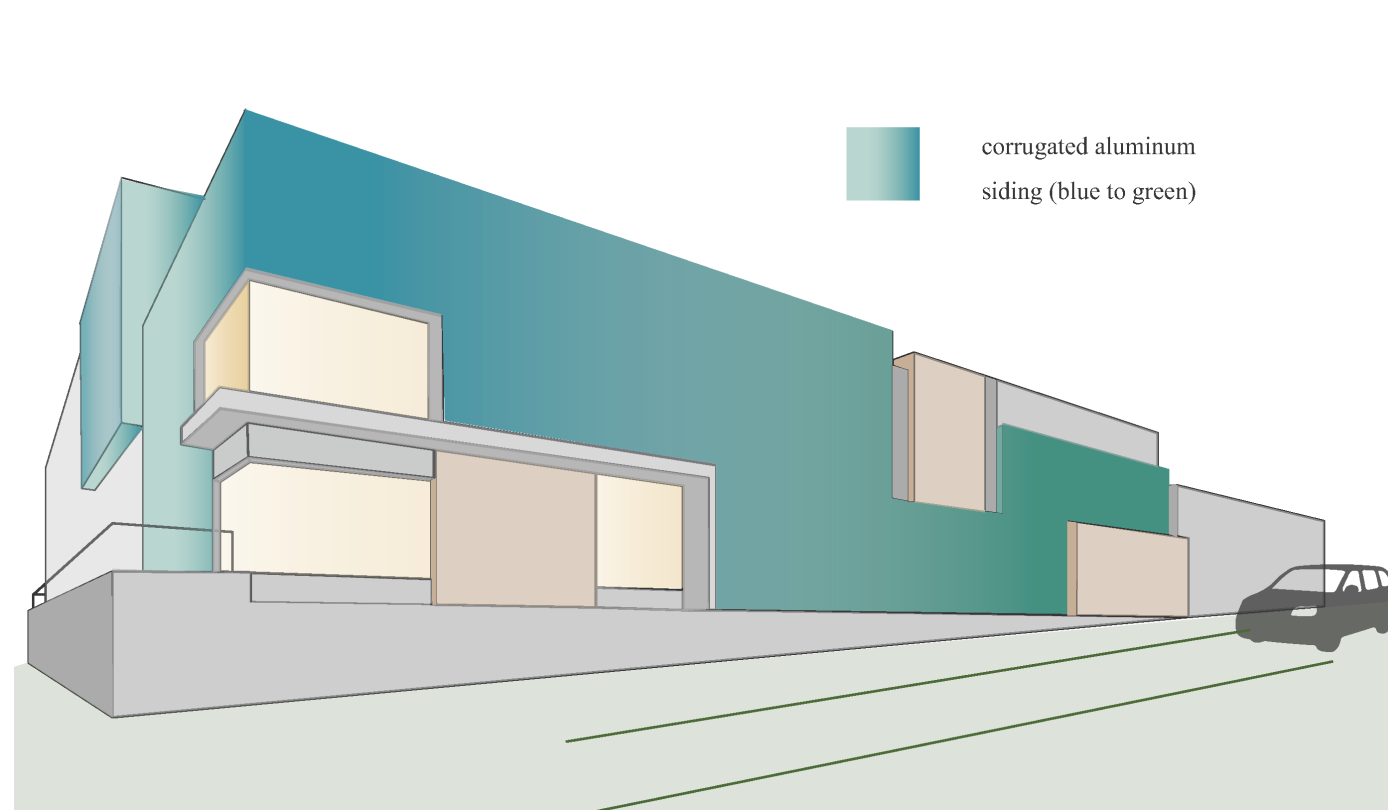
Scale: 1/8" = 1'-0"



Theater Views



Back Facade Analysis



Acoustic Analysis

