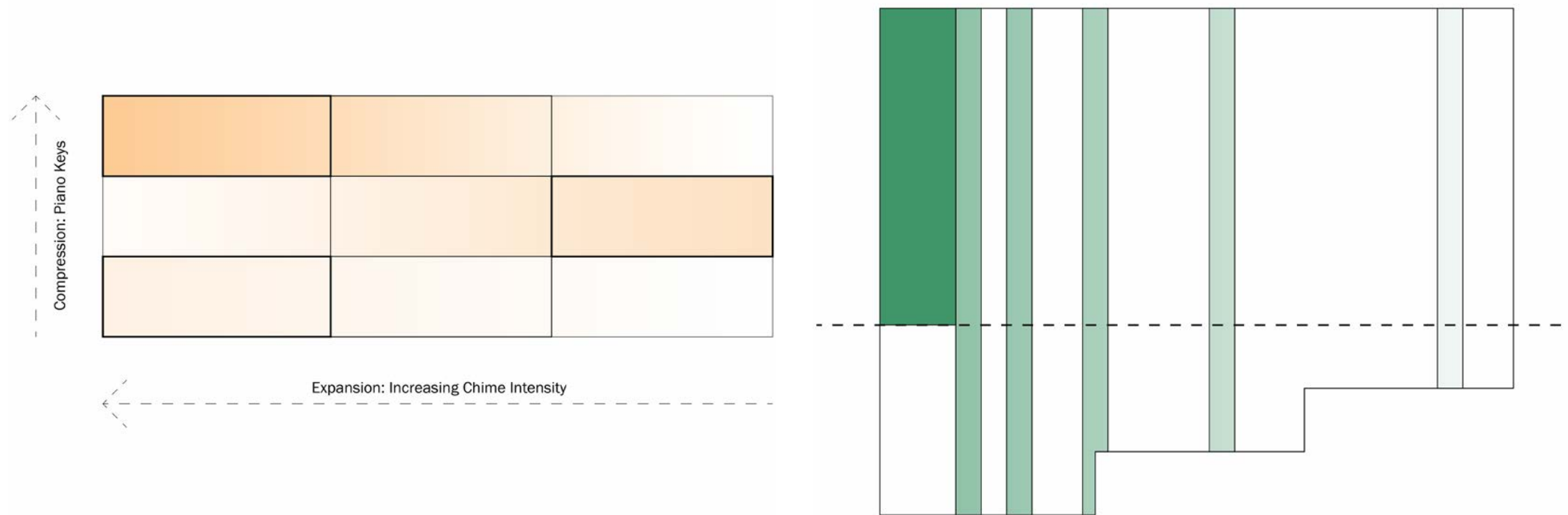
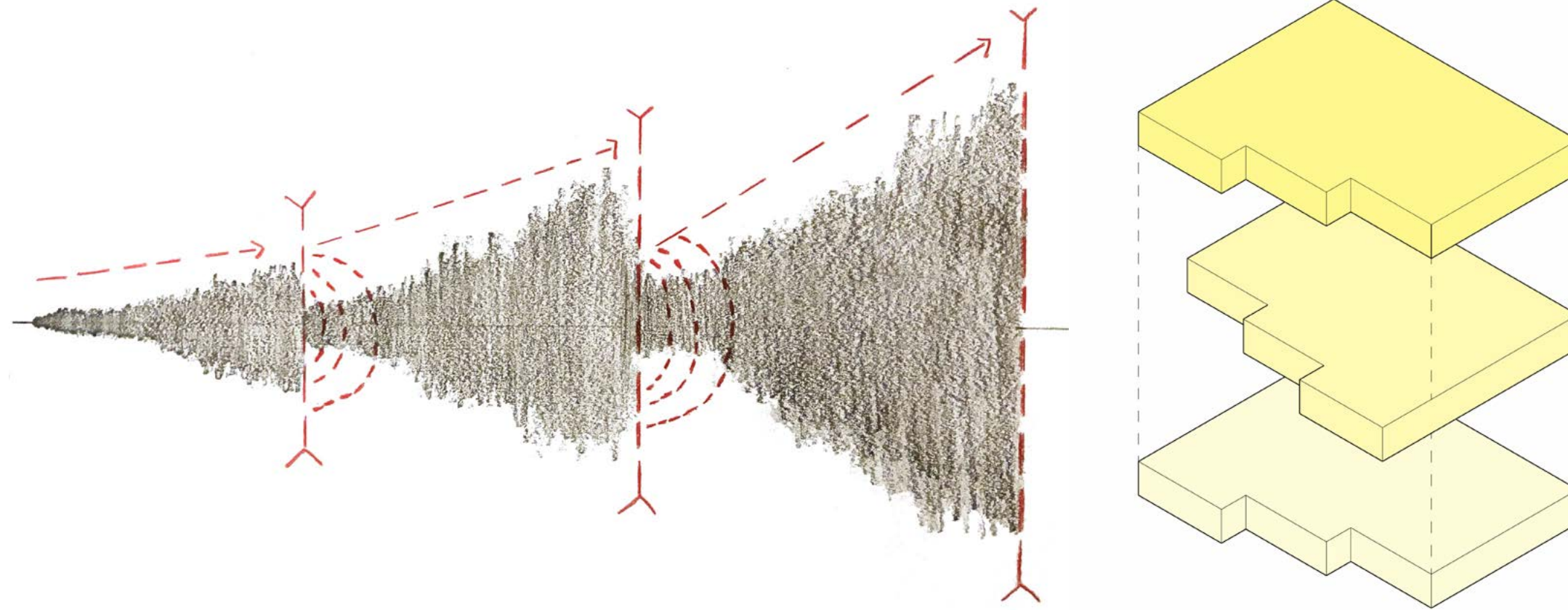
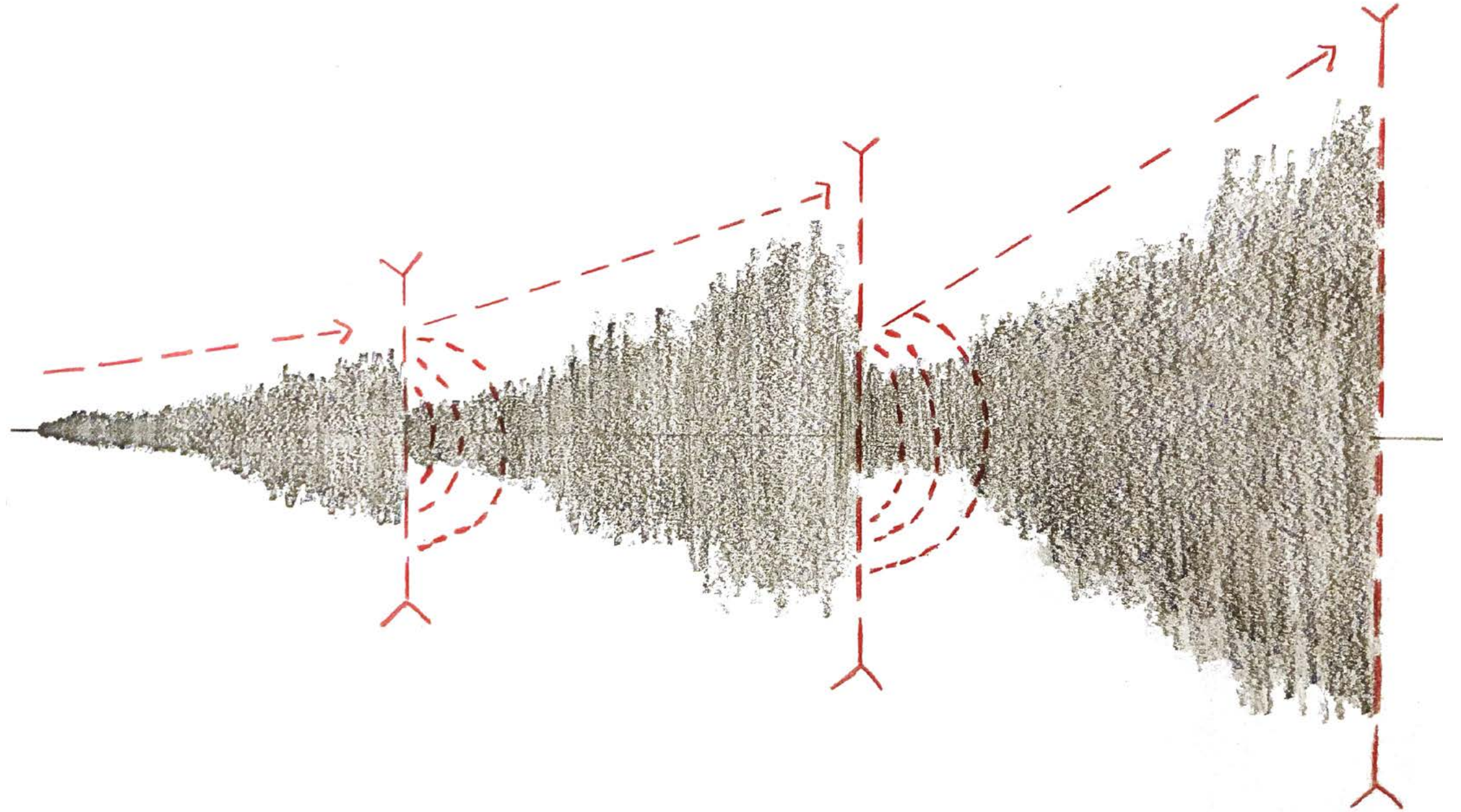


# The Nubian Square Performing Arts Center

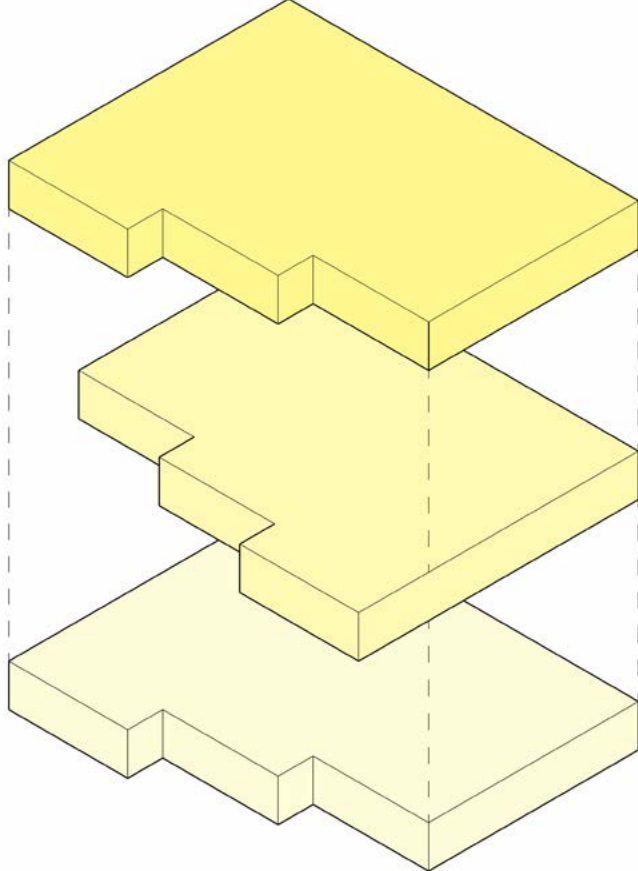
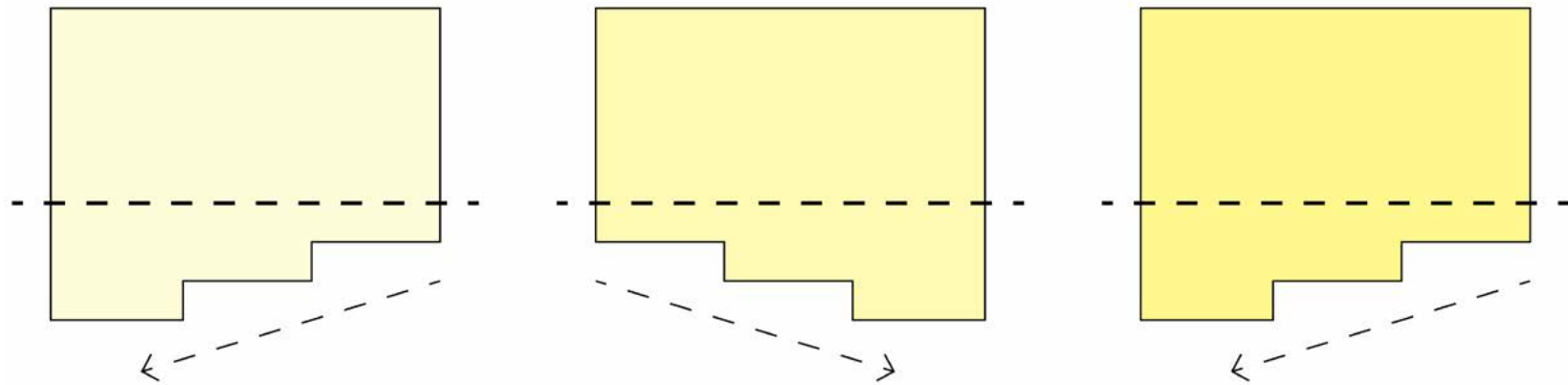


# Initial Studies

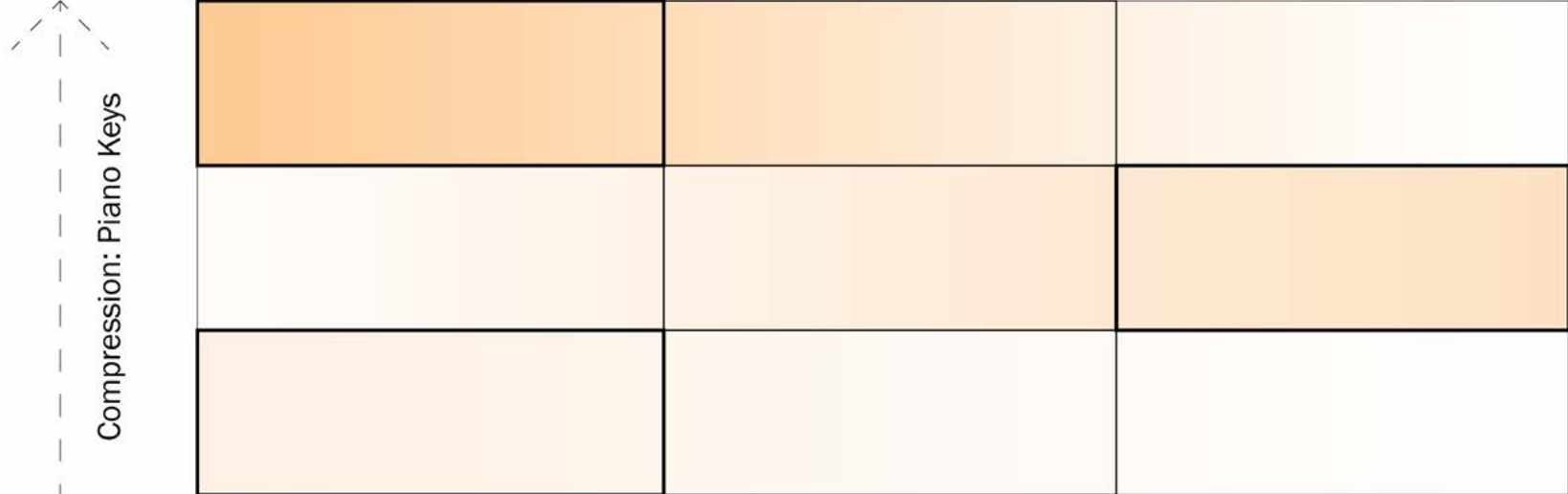
Based on the pieces played, I decided to pick the first one titled "Head Crack" to begin my conceptual thinking. While listening to the piece, I focused on the sounds present rather than Willie's words. I picked up on there being a set of chimes that increased in intensity until it reached a max point and would then be reset by piano keys. After the piano keys play you could hear a slight echoing that underlays the increasing chimes. It is also important to highlight the fact that there are three main intensities that get bigger as the piece progresses.



# Creating a Form: Expansion and Compression, Intensity

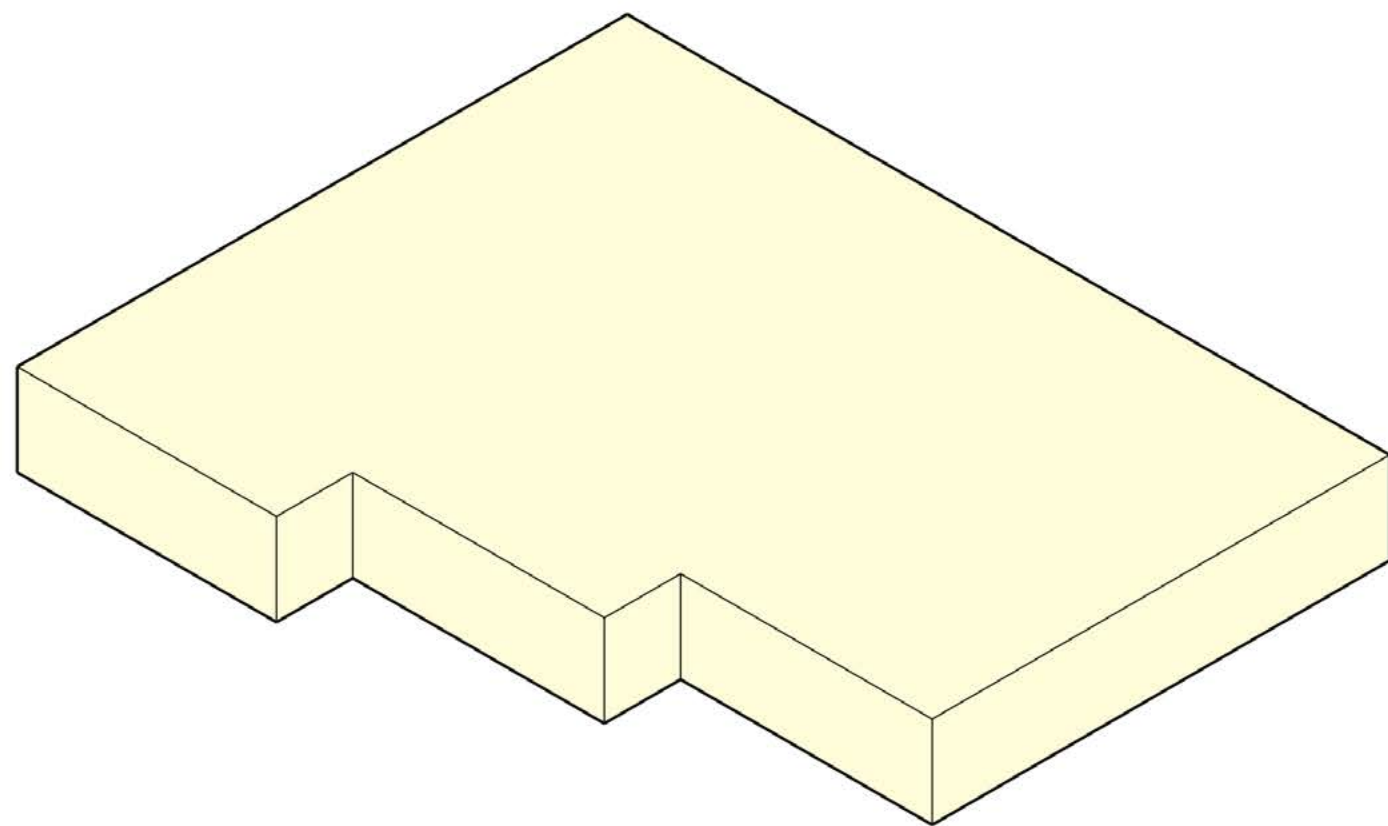


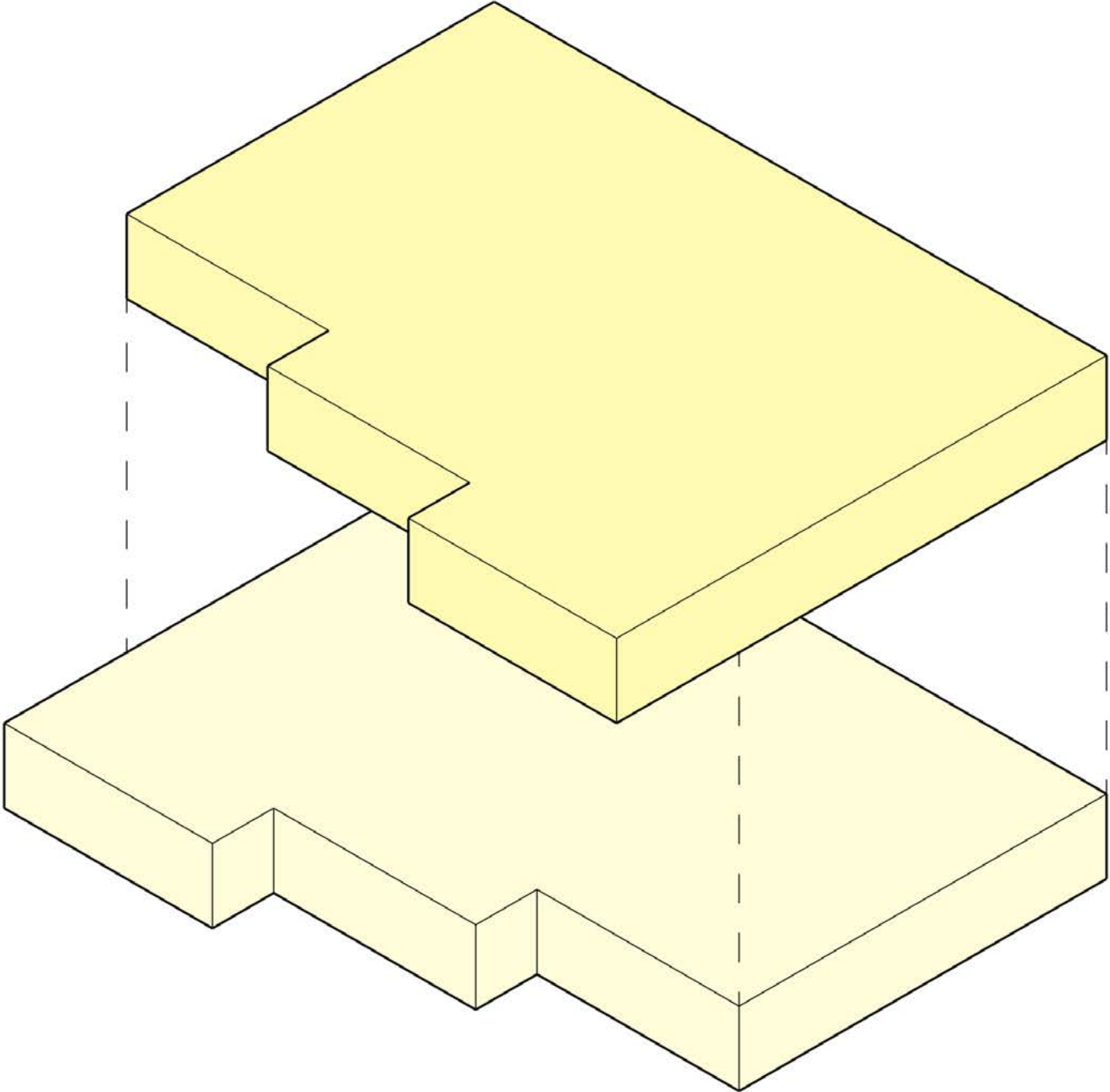
\* Also in animated form

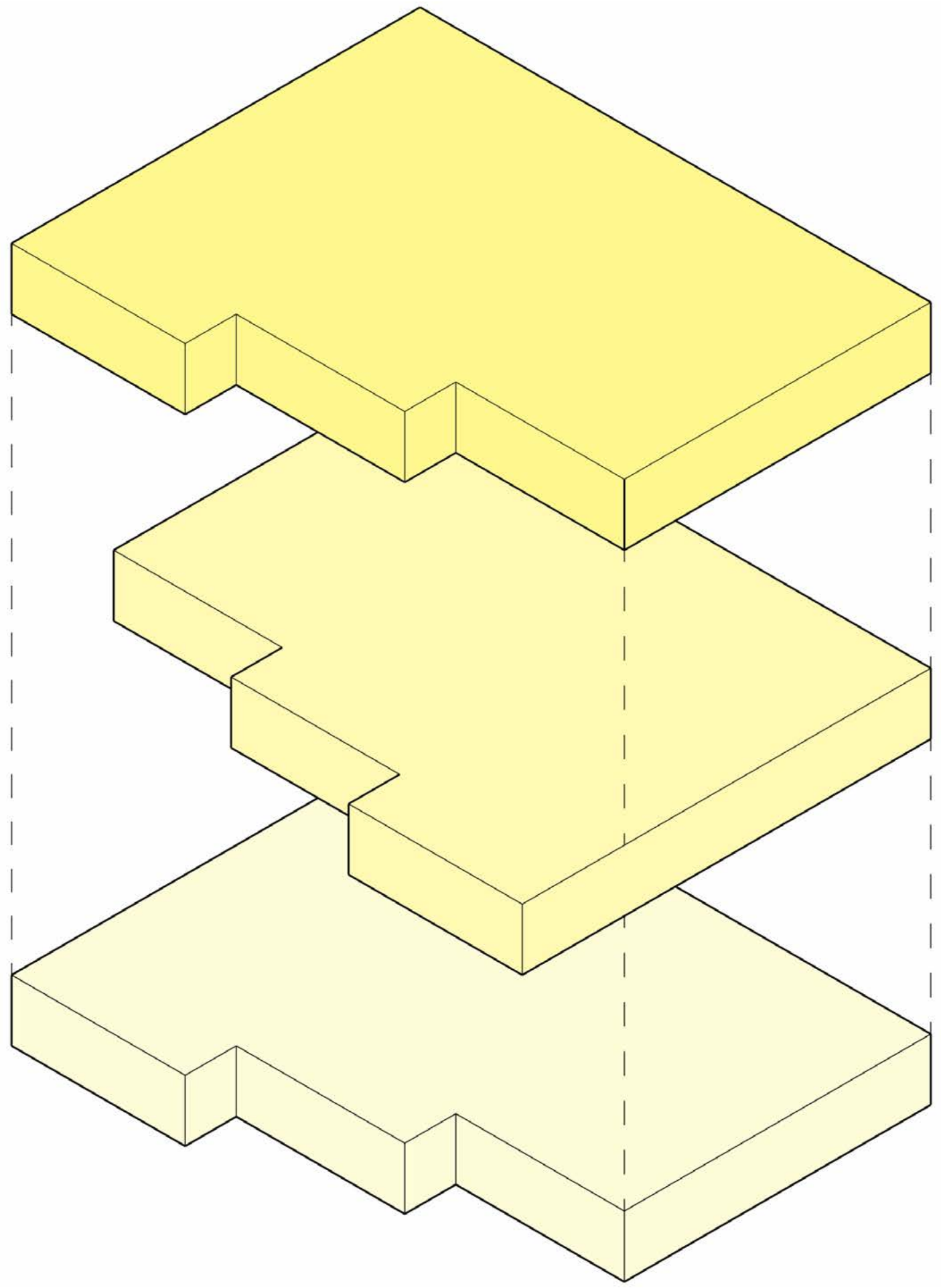


Taking in the elements from the initial sketch, I began to create a form that revolved around having a space designated for the performance theater since it is the heart of the building and then expanding off of the axis would be the other program. Seeing the form in an axonometric, you can see how the floors will flip as you rise in elevation relating to how the chimes in the piece rise in intensity to a max point and then are reset by the piano keys. Turning to a simplistic version of what will become the front facade of the building, it is revealed that each floor will also take into account the element of intensity.

\* Also in animated form





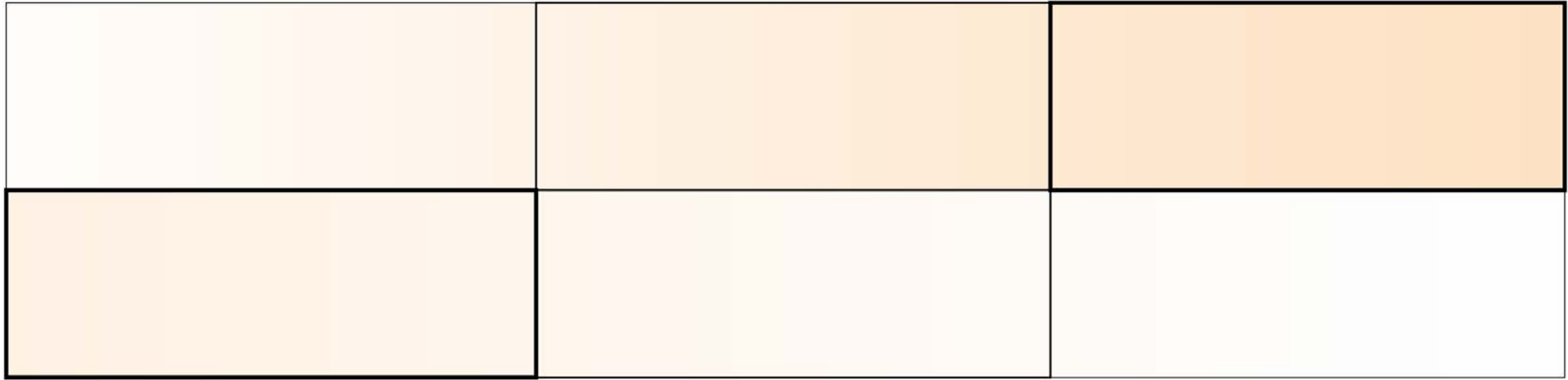


↑  
Compression: Piano Keys



← Expansion: Increasing Chime Intensity

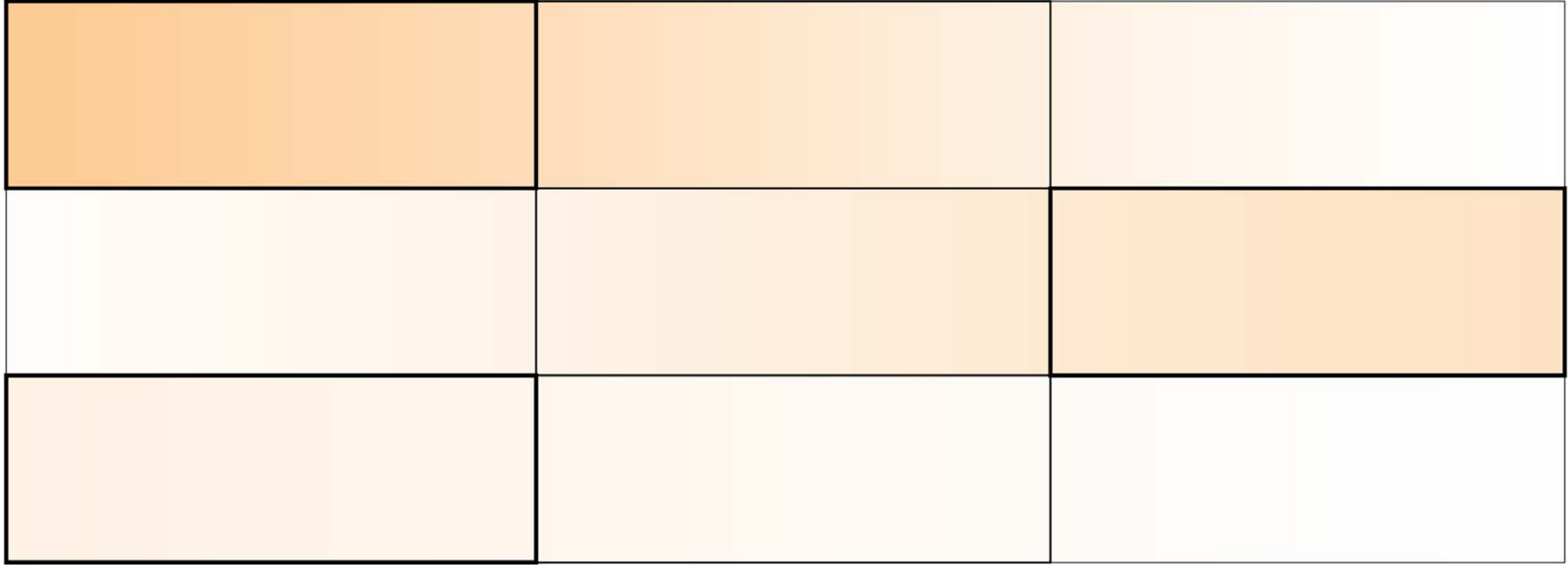
↑  
Compression: Piano Keys



← Expansion: Increasing Chime Intensity

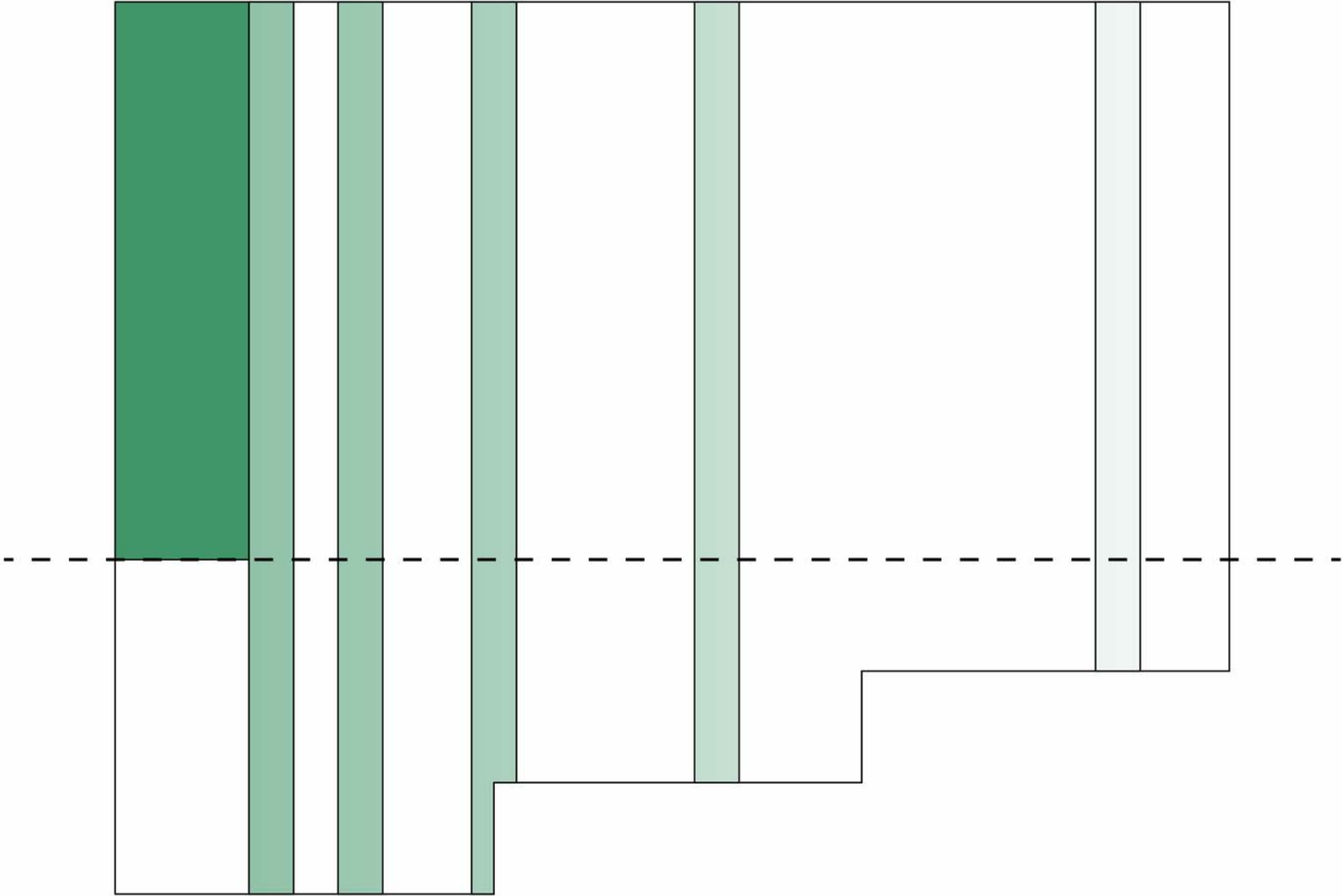


↑  
Compression: Piano Keys

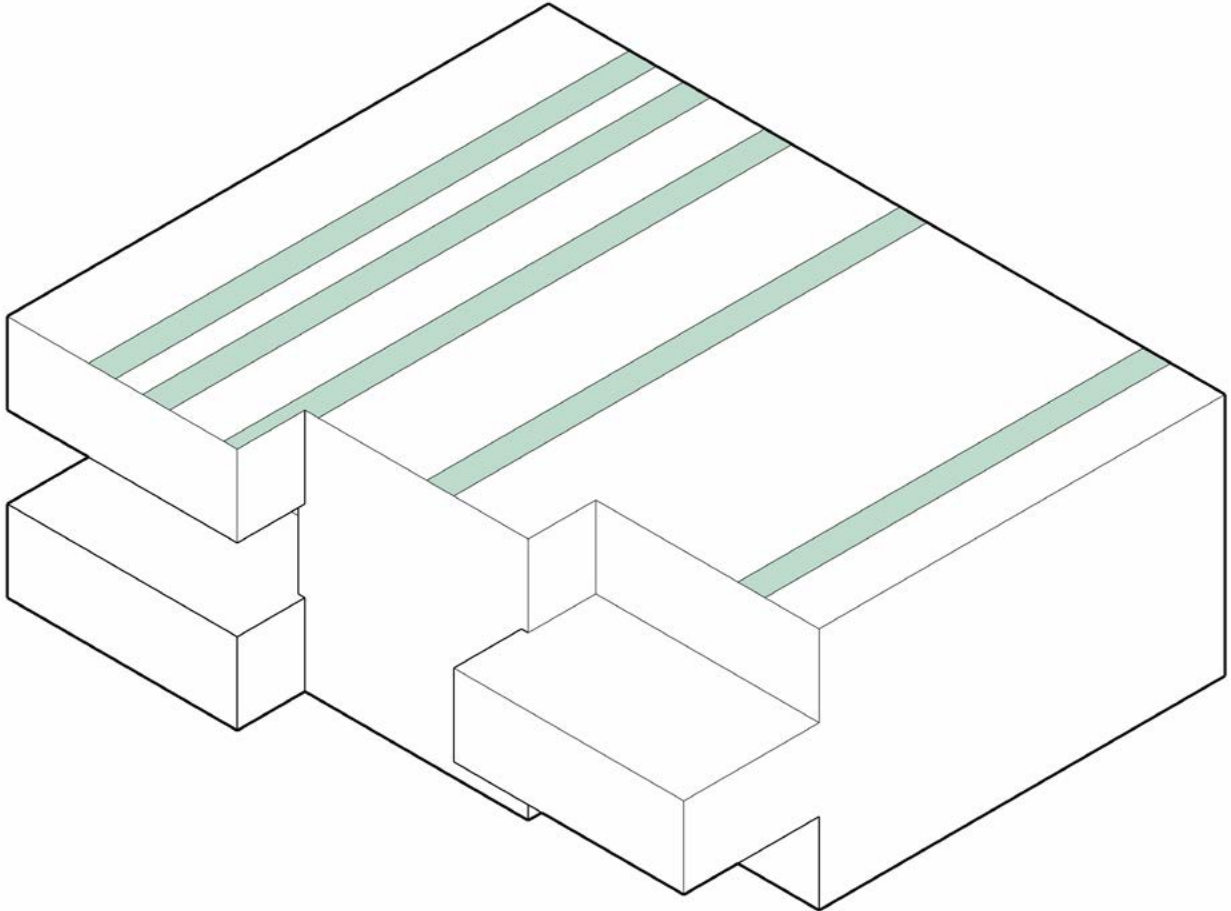


← Expansion: Increasing Chime Intensity

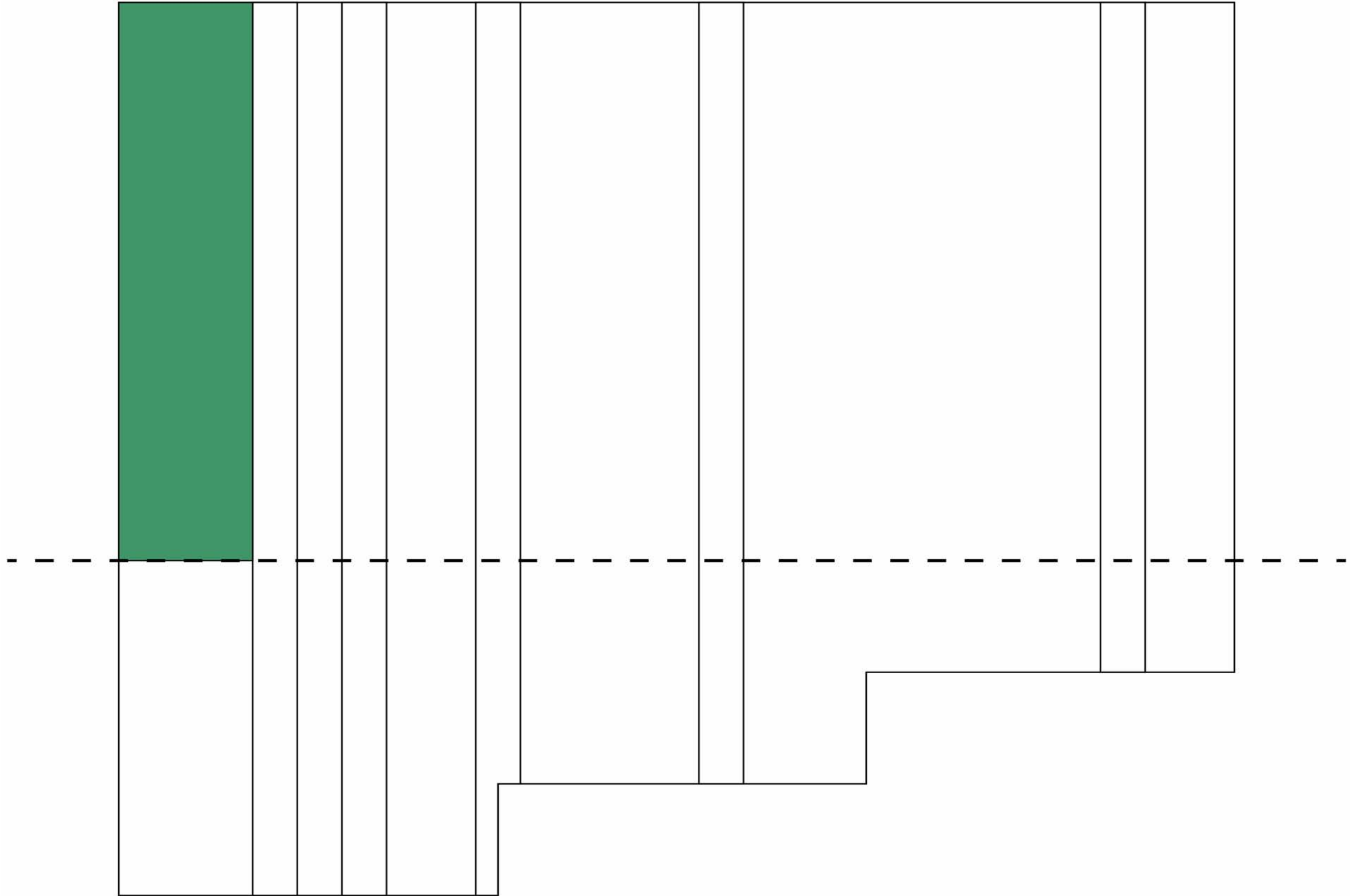
# Creating a Form: Adding the Echo Layer

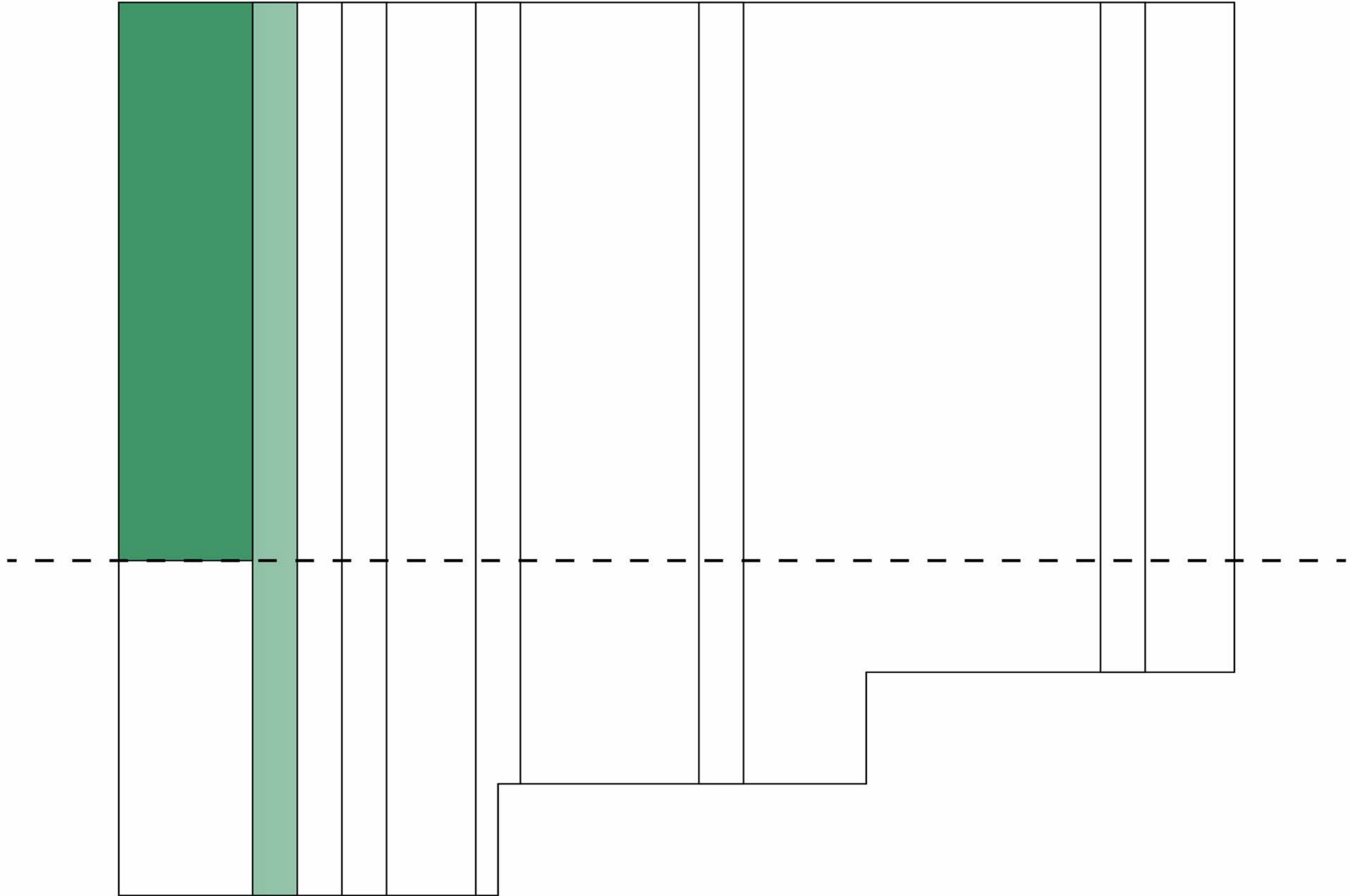


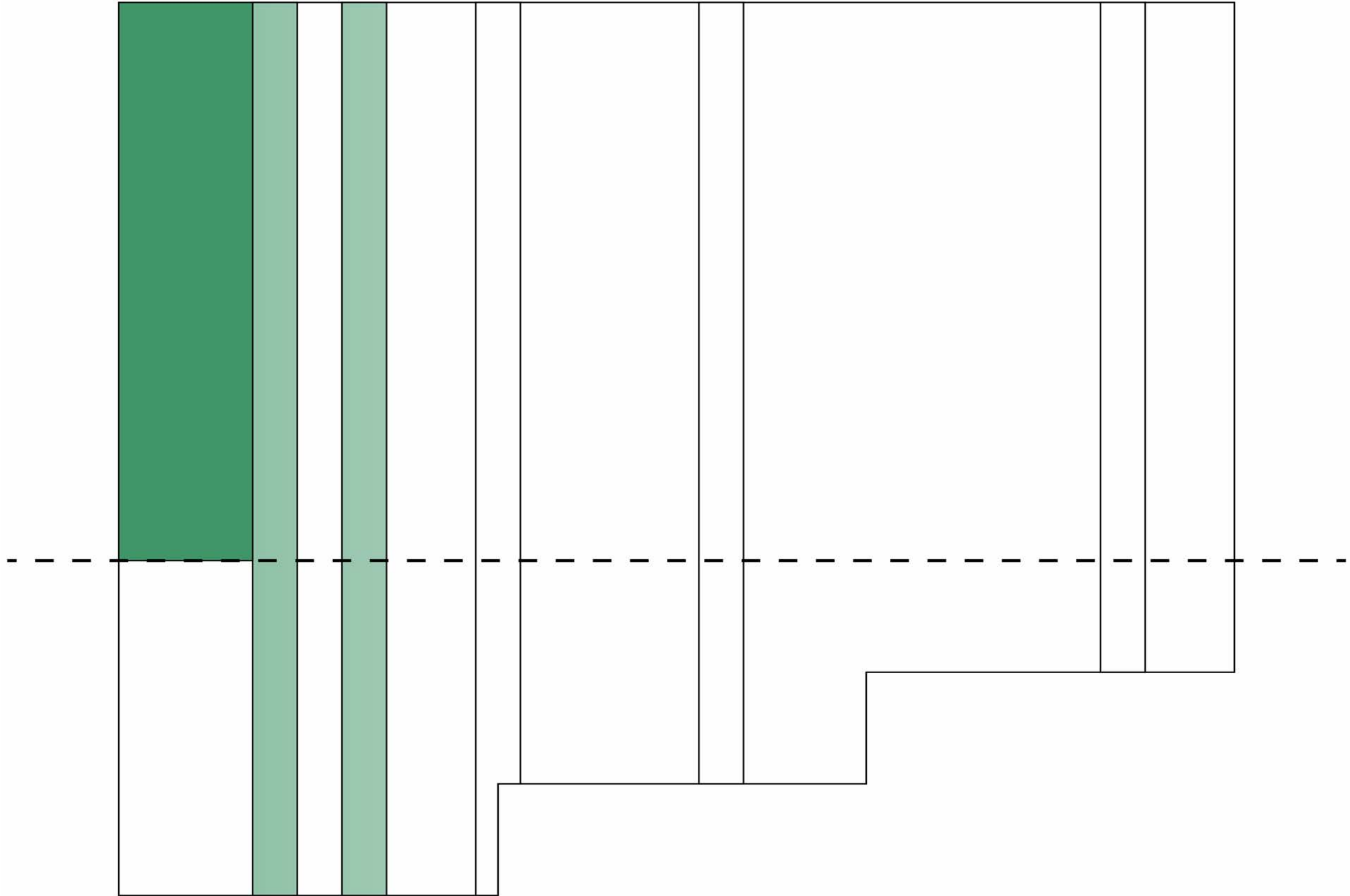
\* Also in animated form

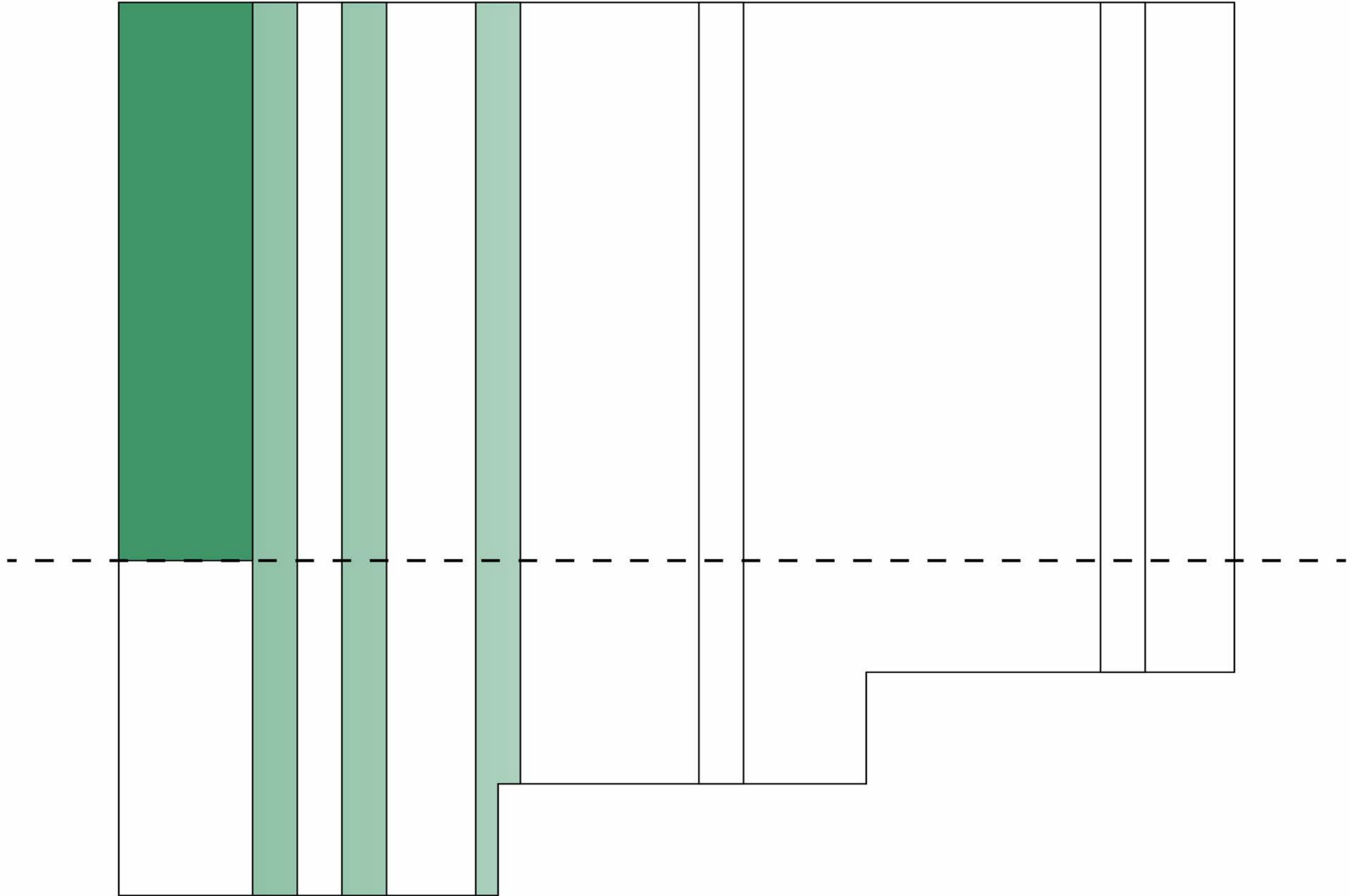


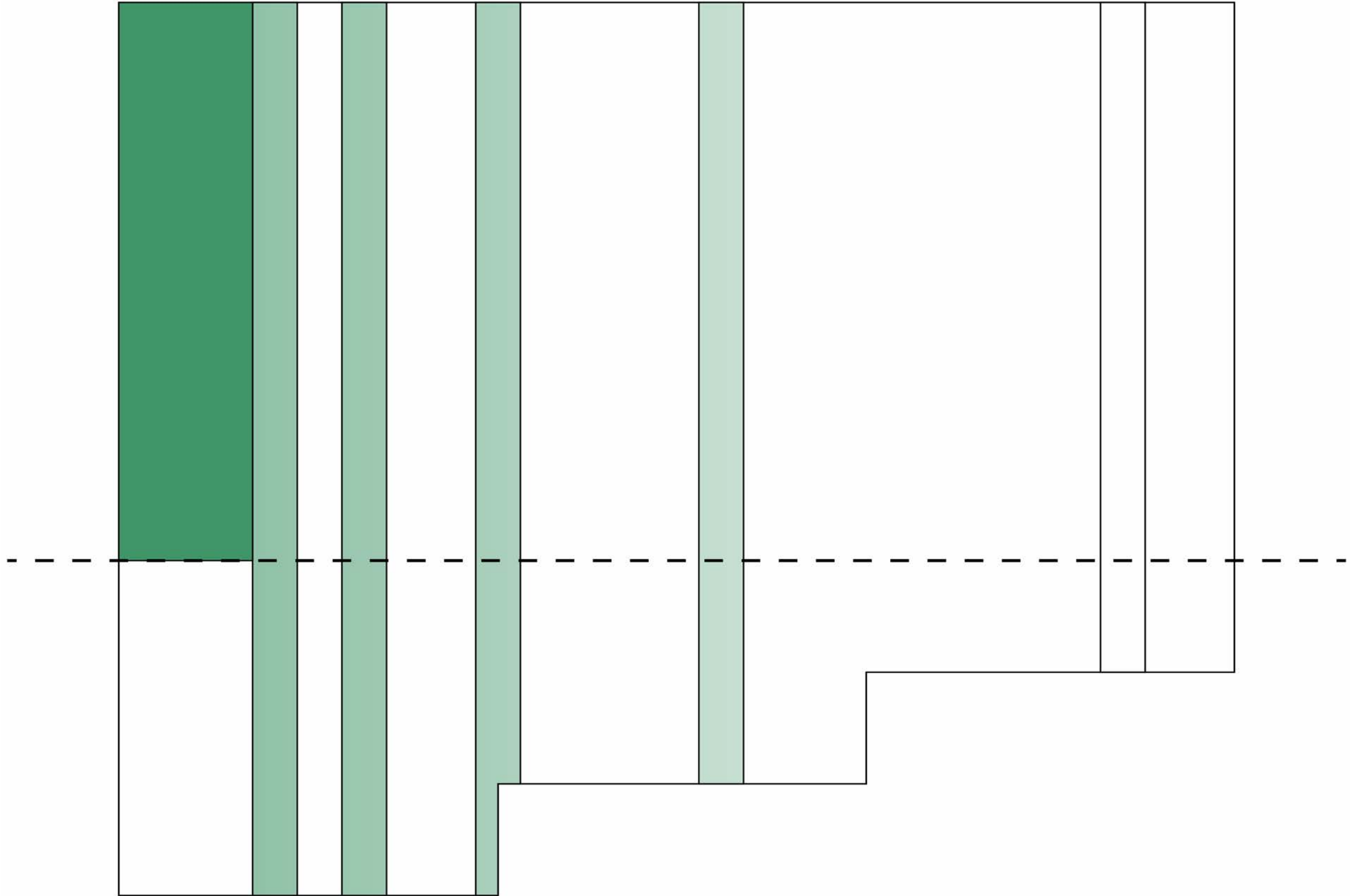
Now, by adding onto the current layers, the element of the echoing is applied. Bringing back the initial 2D form, an area for the performance stage is selected and then echoing off of it will be a series of apertures that mimic sound echoing away from the performer and relating to how the sounds of the piano keys played in “Head Crack” echo and underlay the chimes.

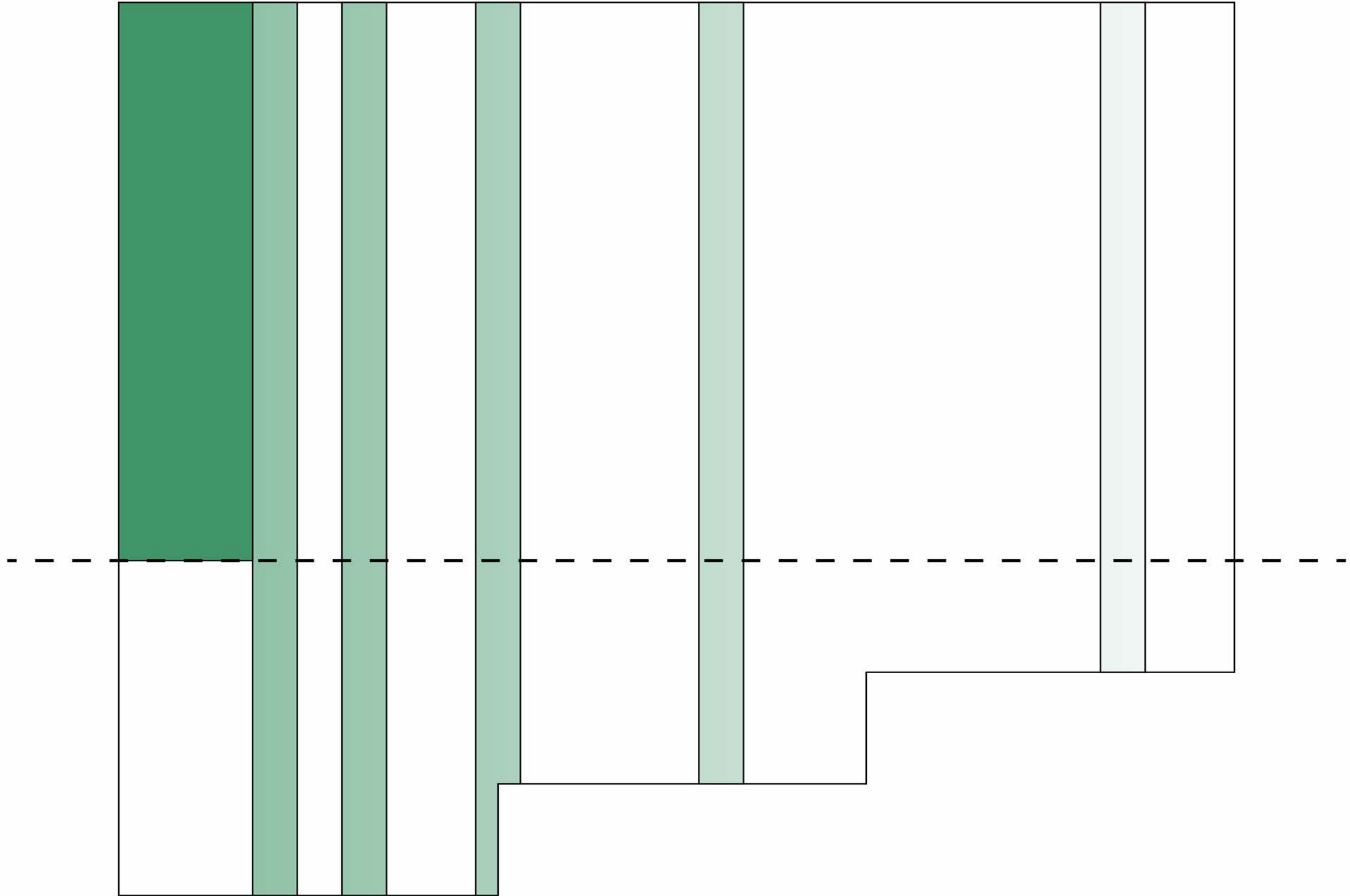






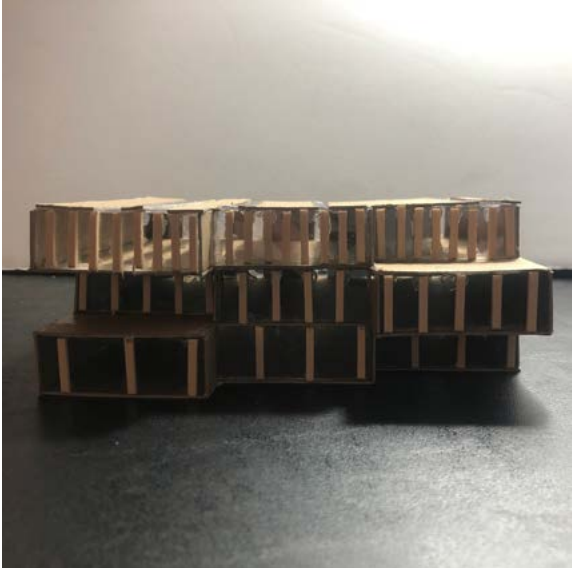








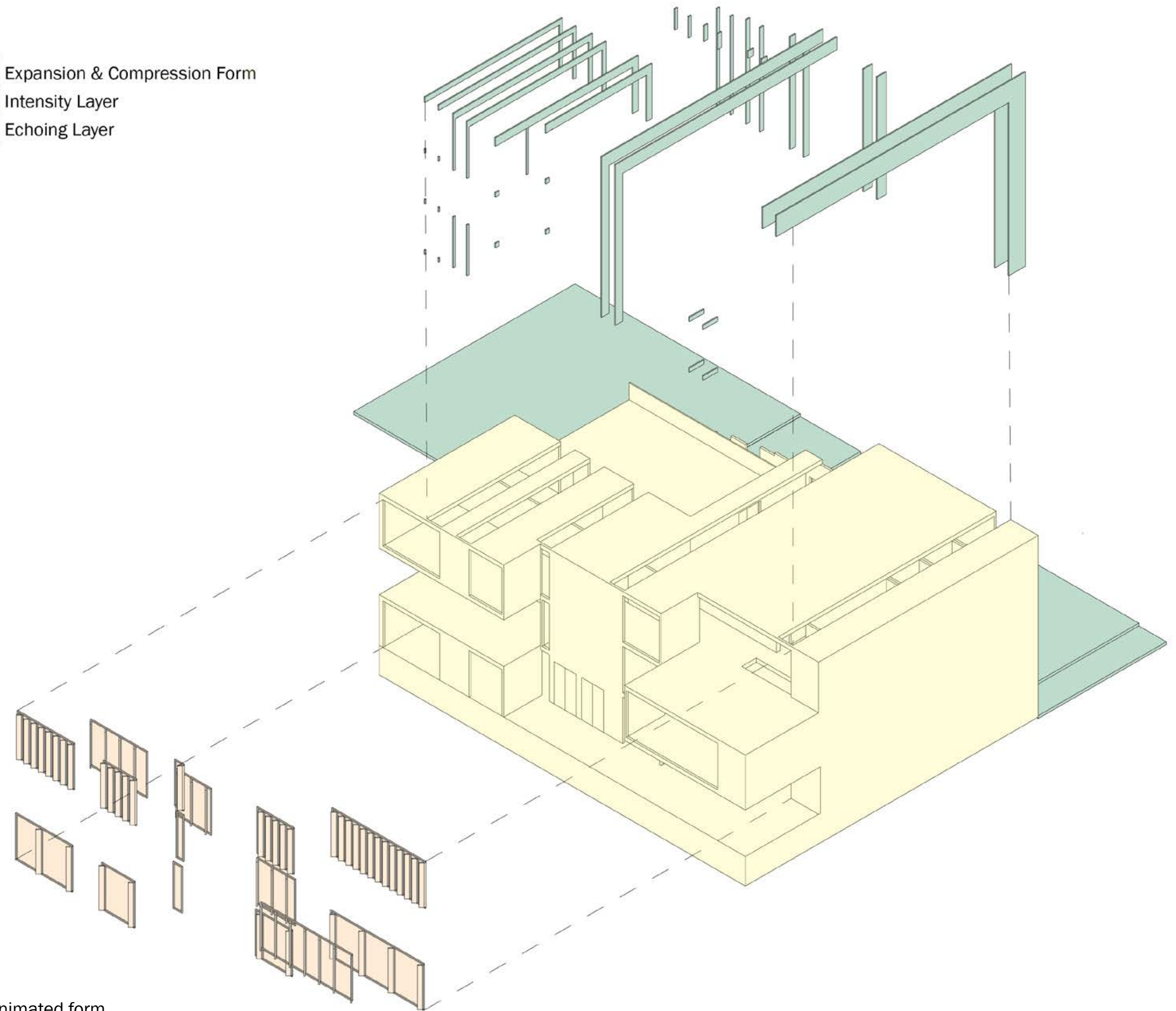
# Study Model



# Applying Conceptual Elements into a Digital Form

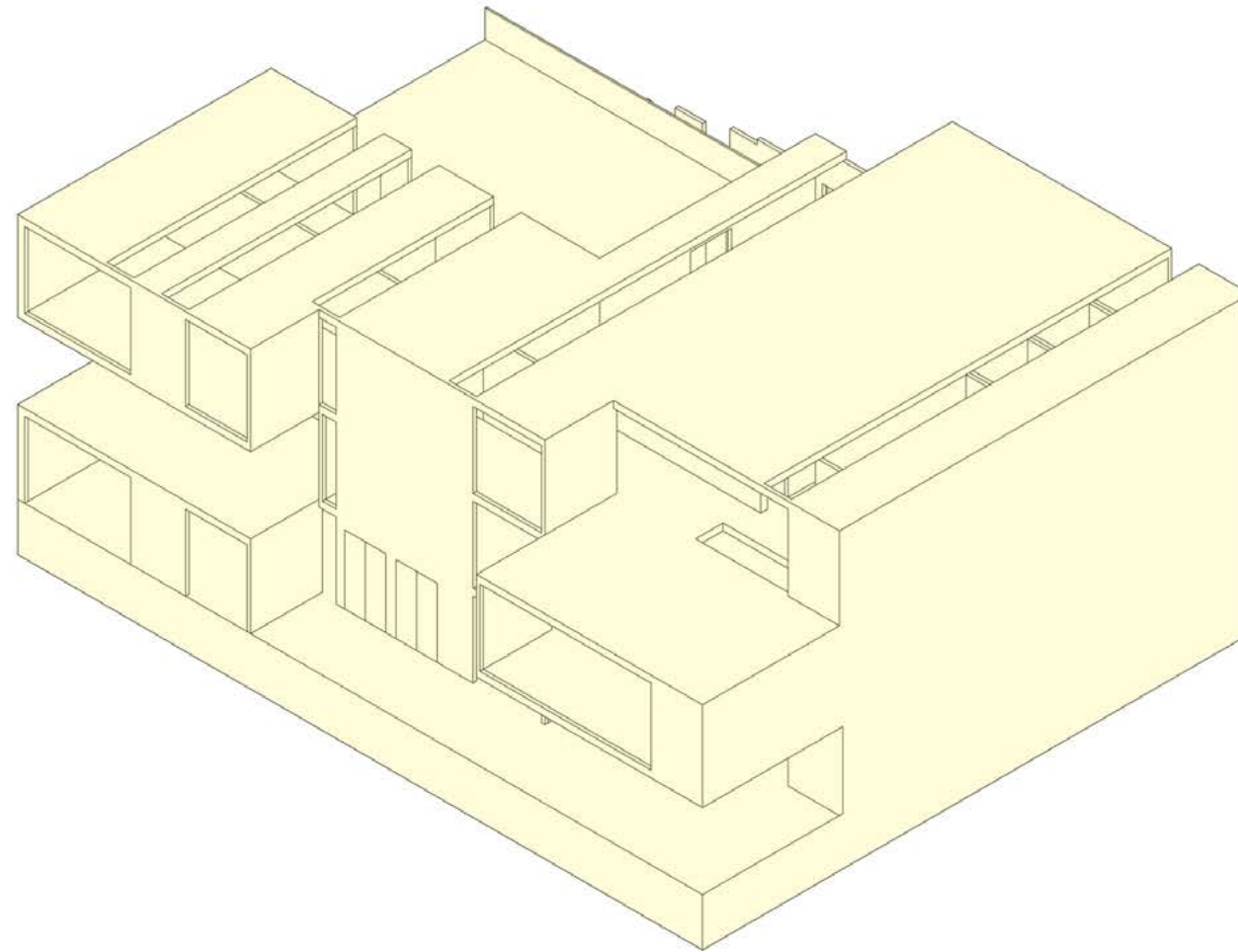
After combining all the elements found in “Head Crack” into a form, I constructed a digital model and after playing with the landscape, I was able to further incorporate the echo layer by having the landscape line up with the apertures.

- Expansion & Compression Form
- Intensity Layer
- Echoing Layer

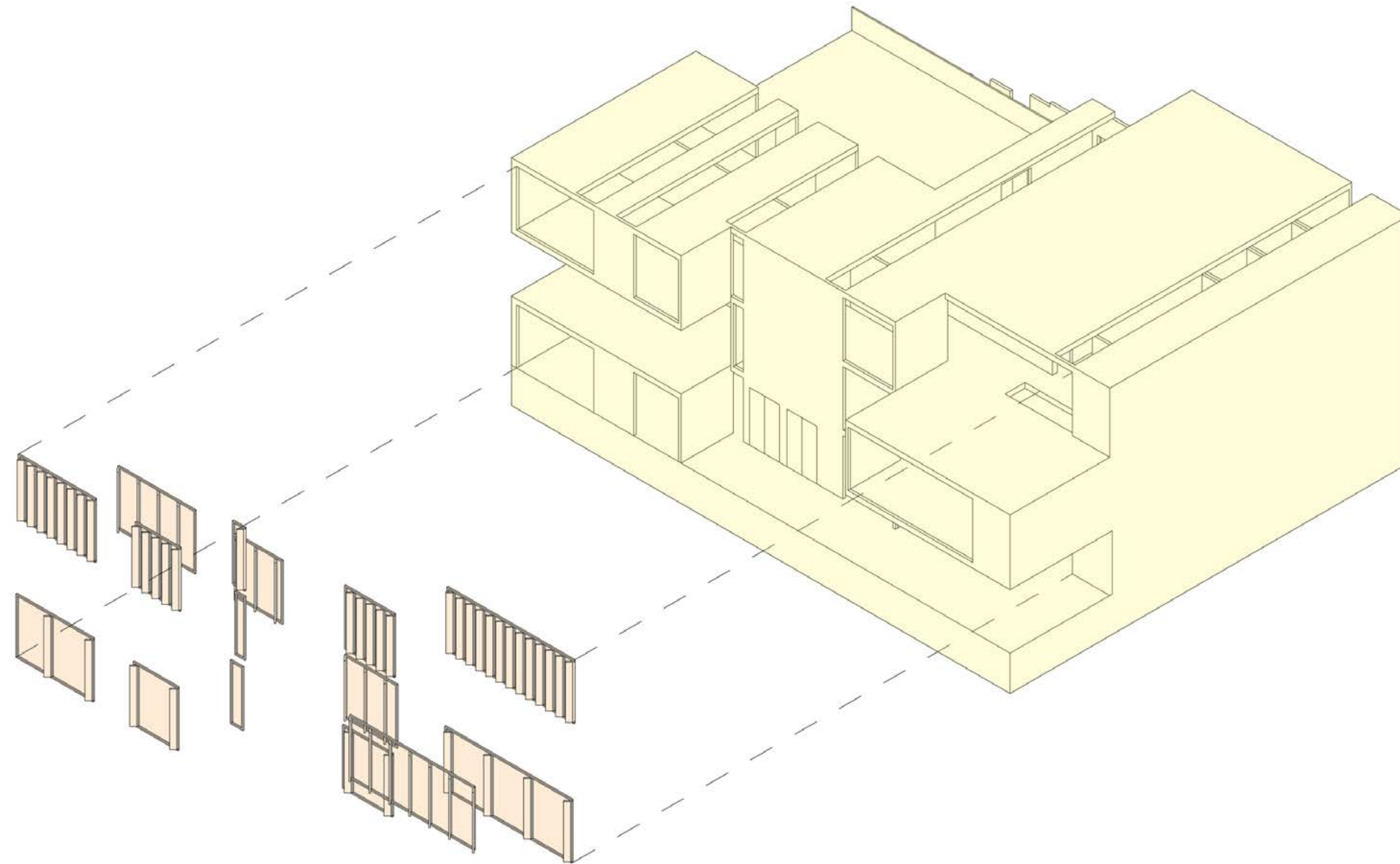


\* Also in animated form

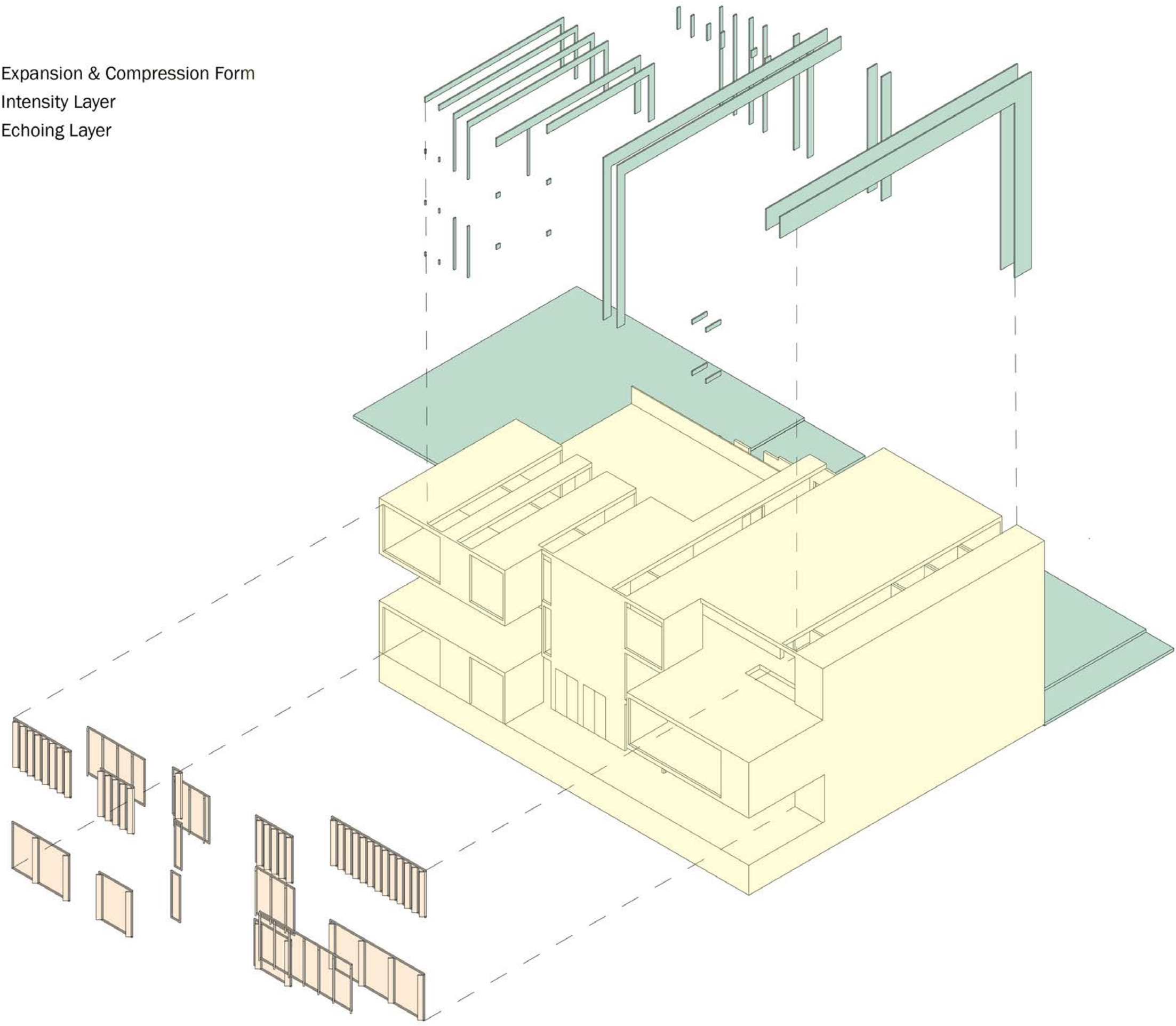
Expansion & Compression Form



- Expansion & Compression Form
- Intensity Layer



- Expansion & Compression Form
- Intensity Layer
- Echoing Layer

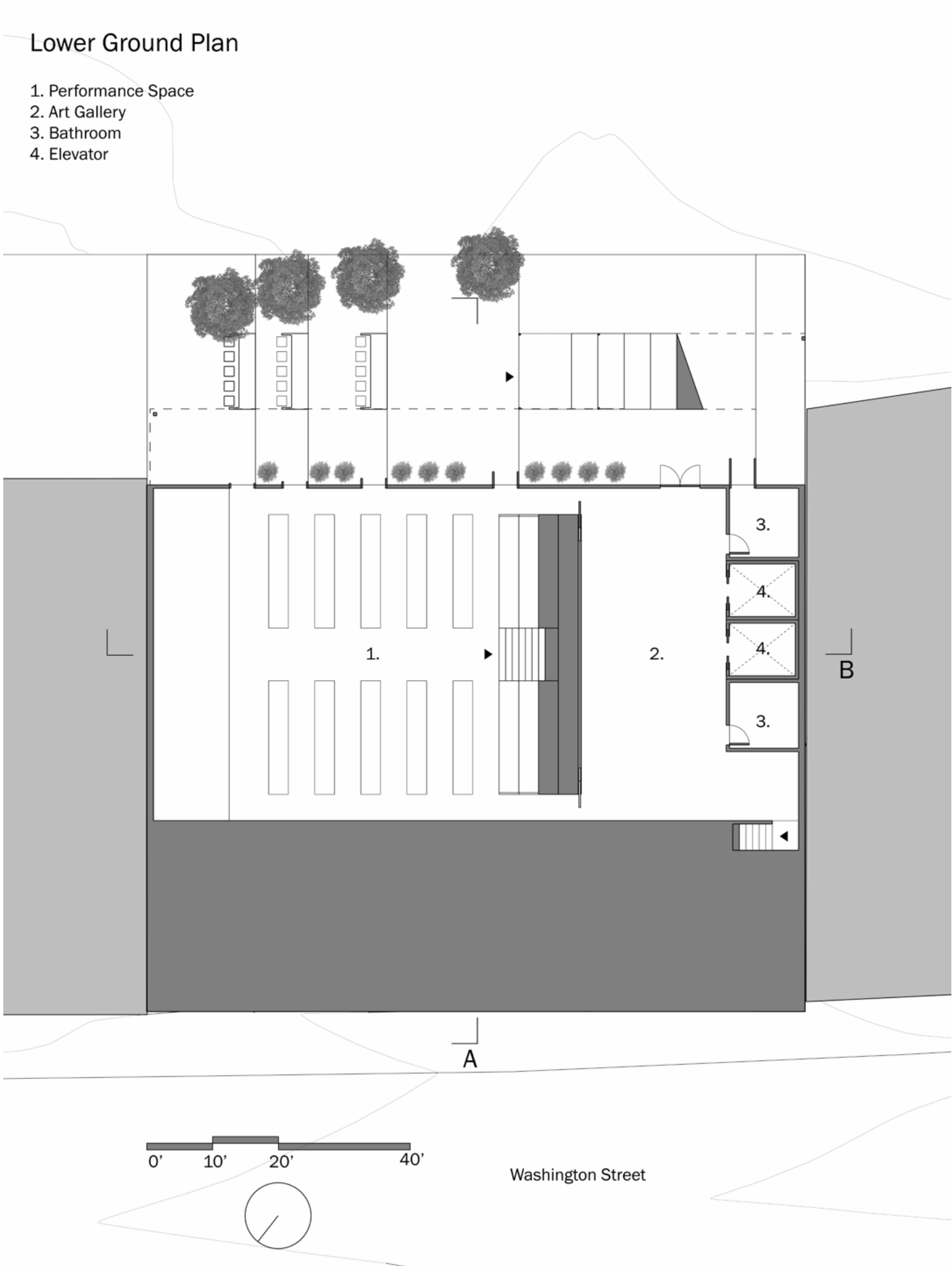


# Site Plan



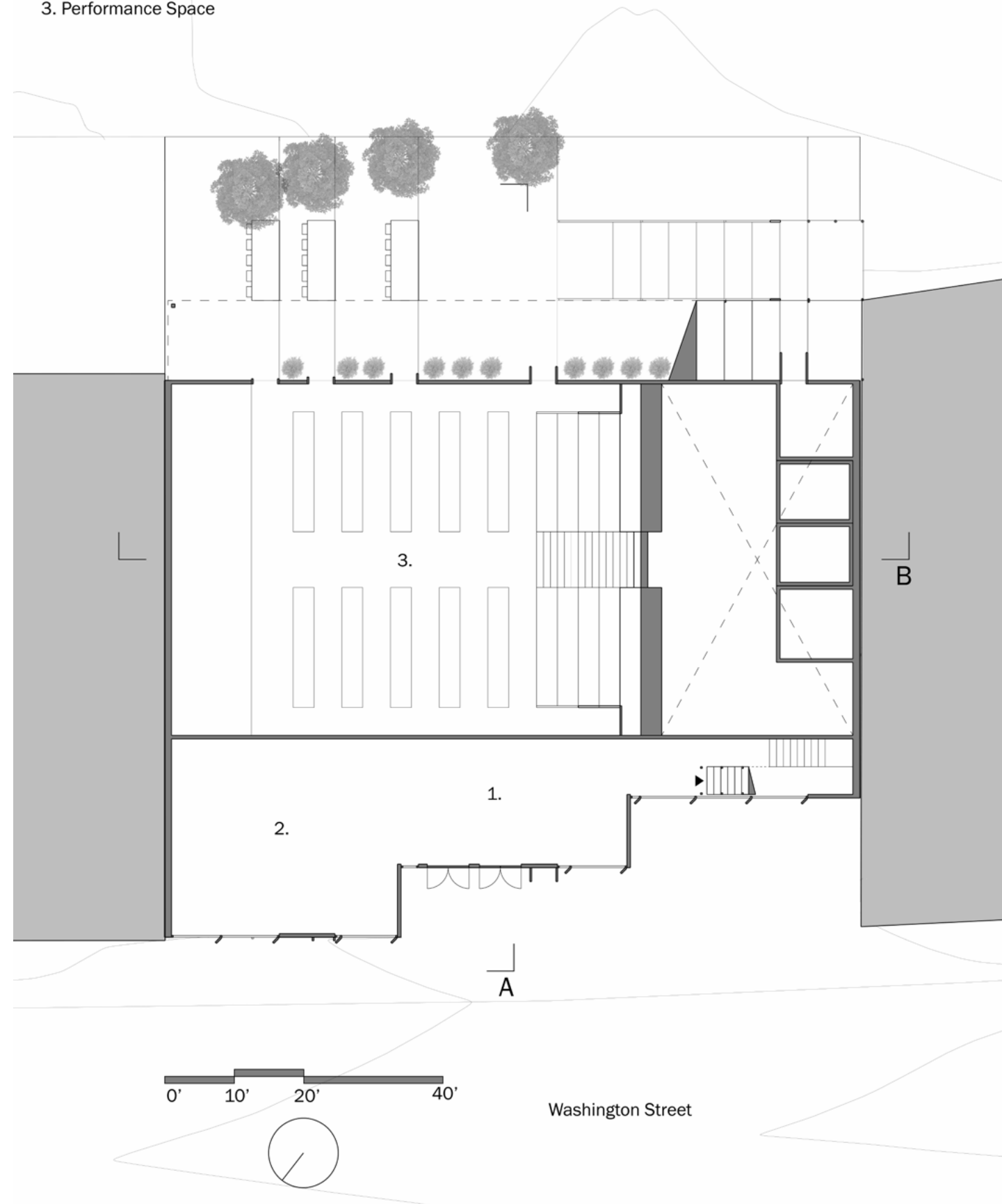
\* Project 01: A House for a Musican and a Poet

# Floor Plans



# Ground Plan

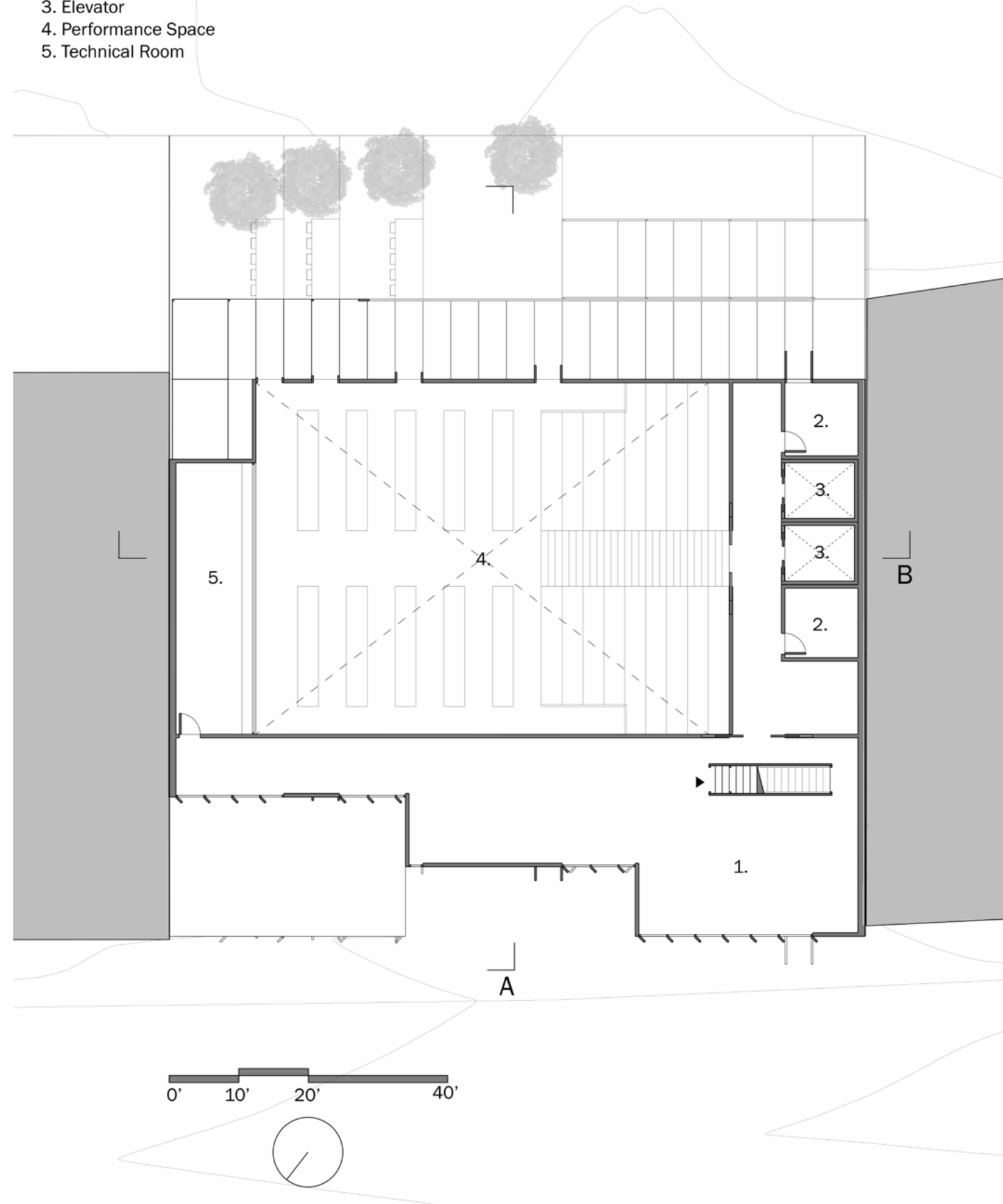
- 1. Lobby
- 2. Cafe
- 3. Performance Space





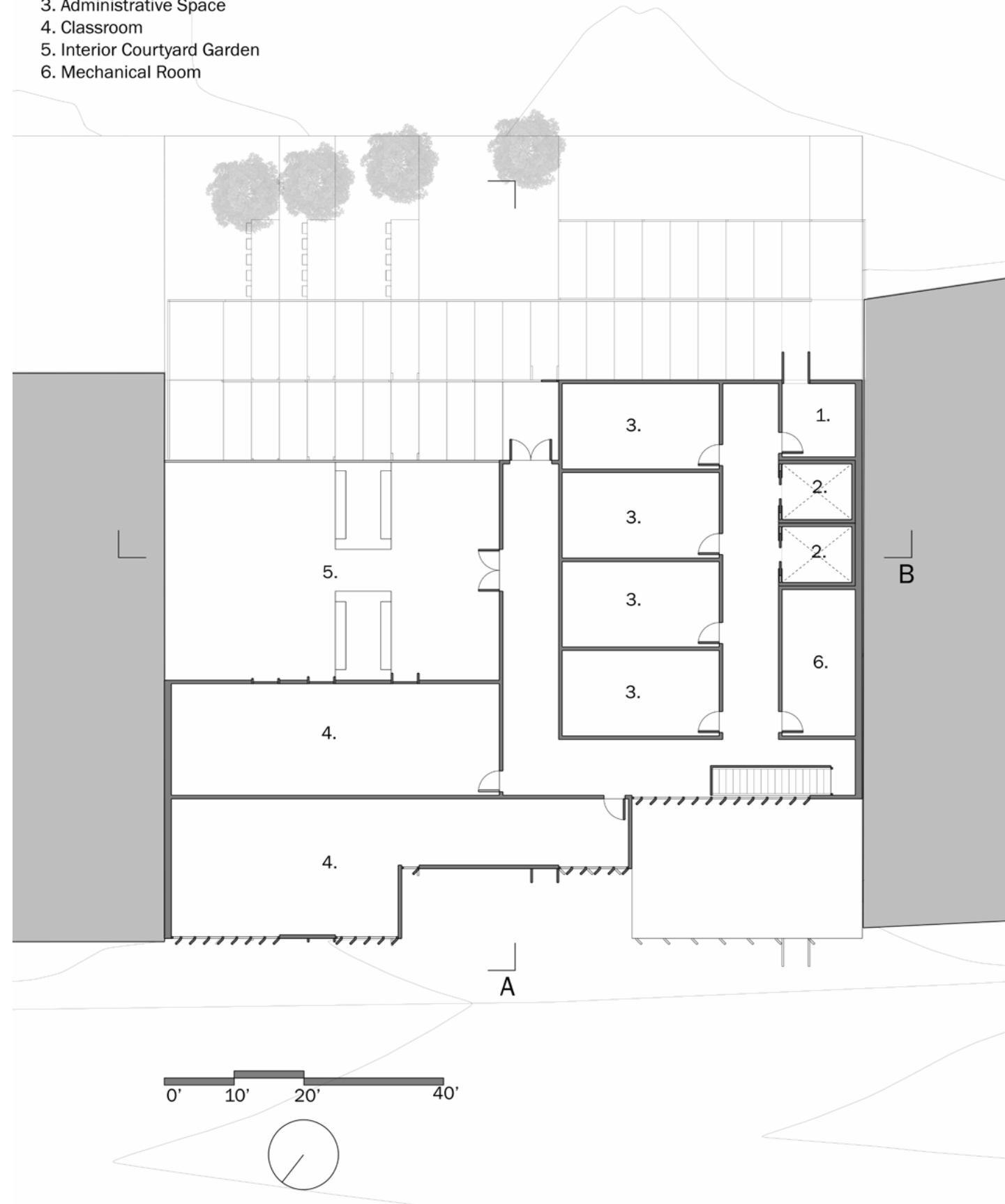
# 2nd Floor Plan

- 1. Community Room
- 2. Bathroom
- 3. Elevator
- 4. Performance Space
- 5. Technical Room

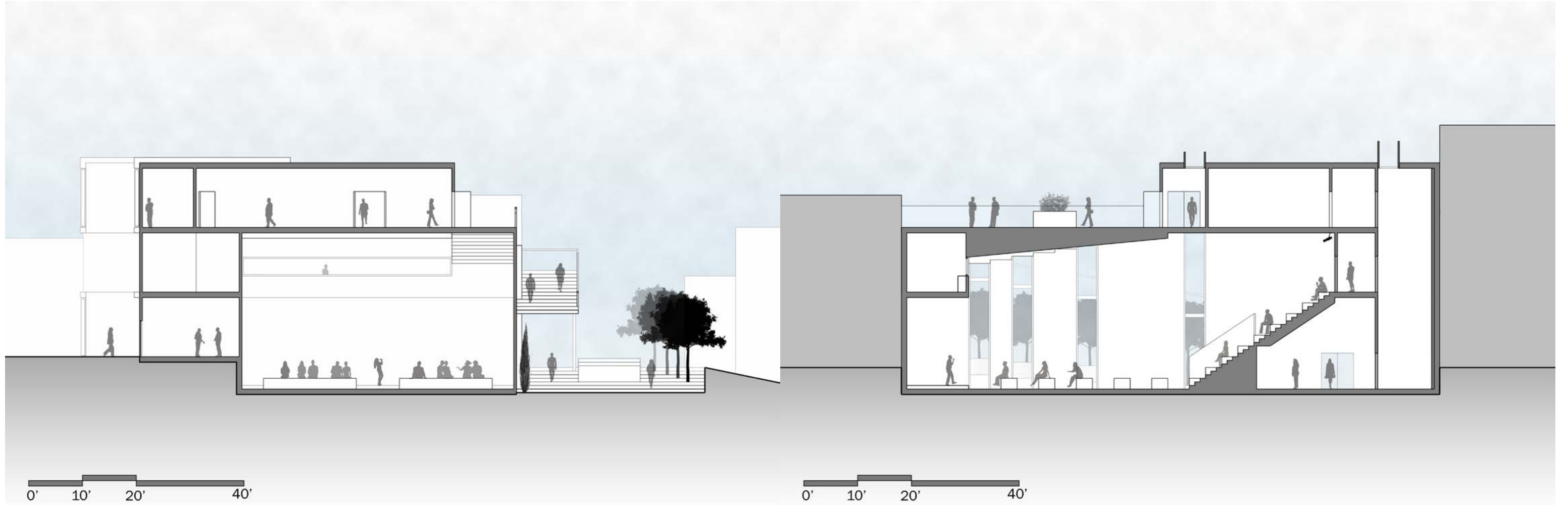


# 3rd Floor Plan

- 1. Bathroom
- 2. Elevator
- 3. Administrative Space
- 4. Classroom
- 5. Interior Courtyard Garden
- 6. Mechanical Room



# Building Sections



Section A

Section B

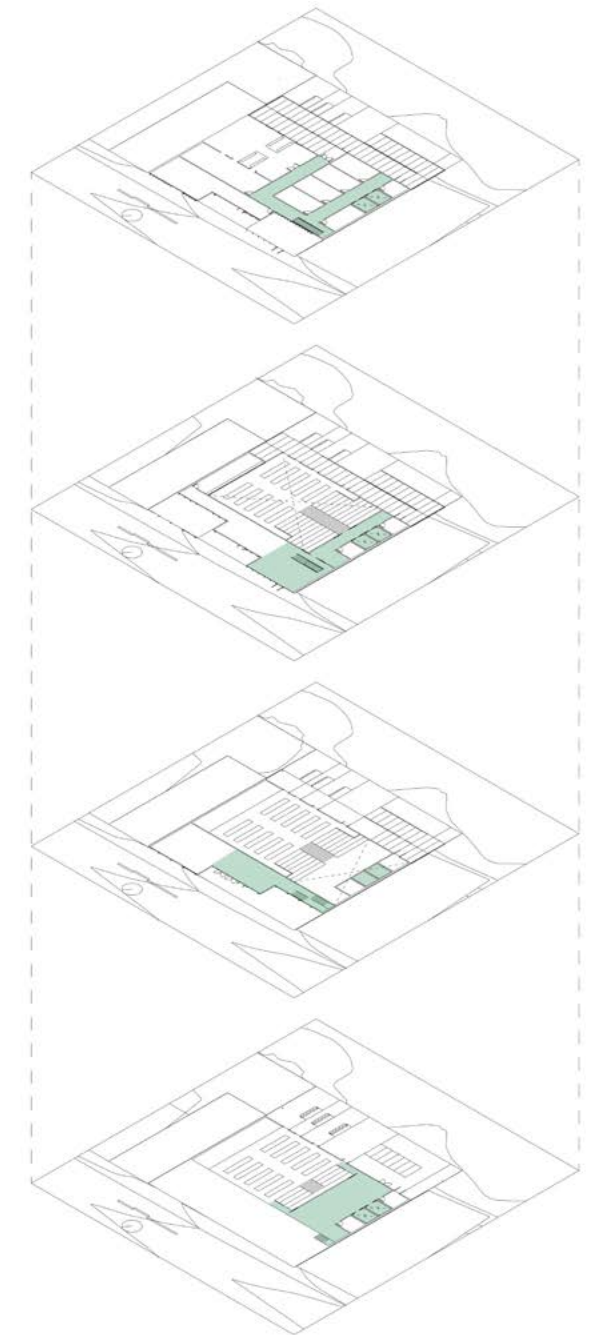
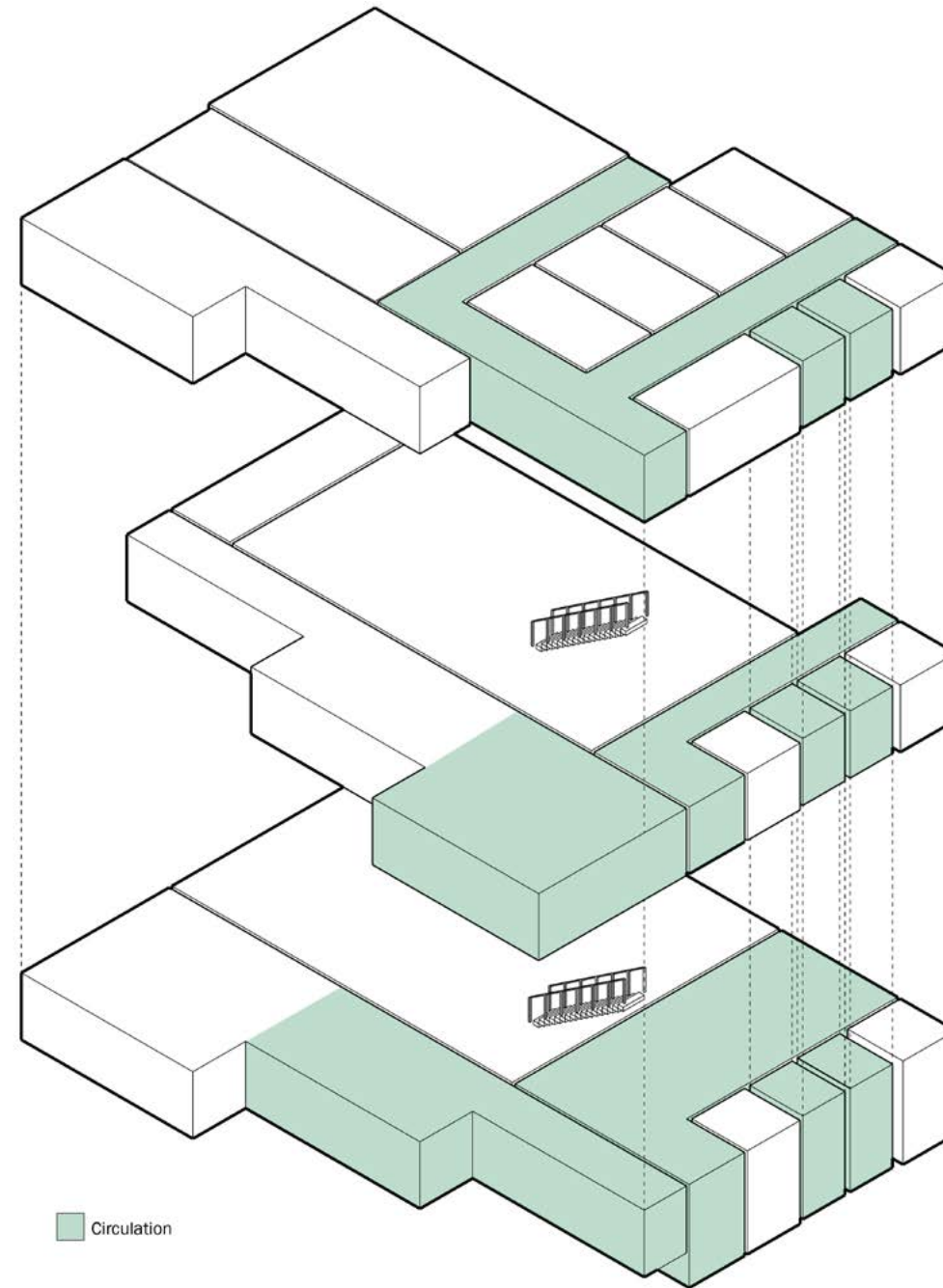
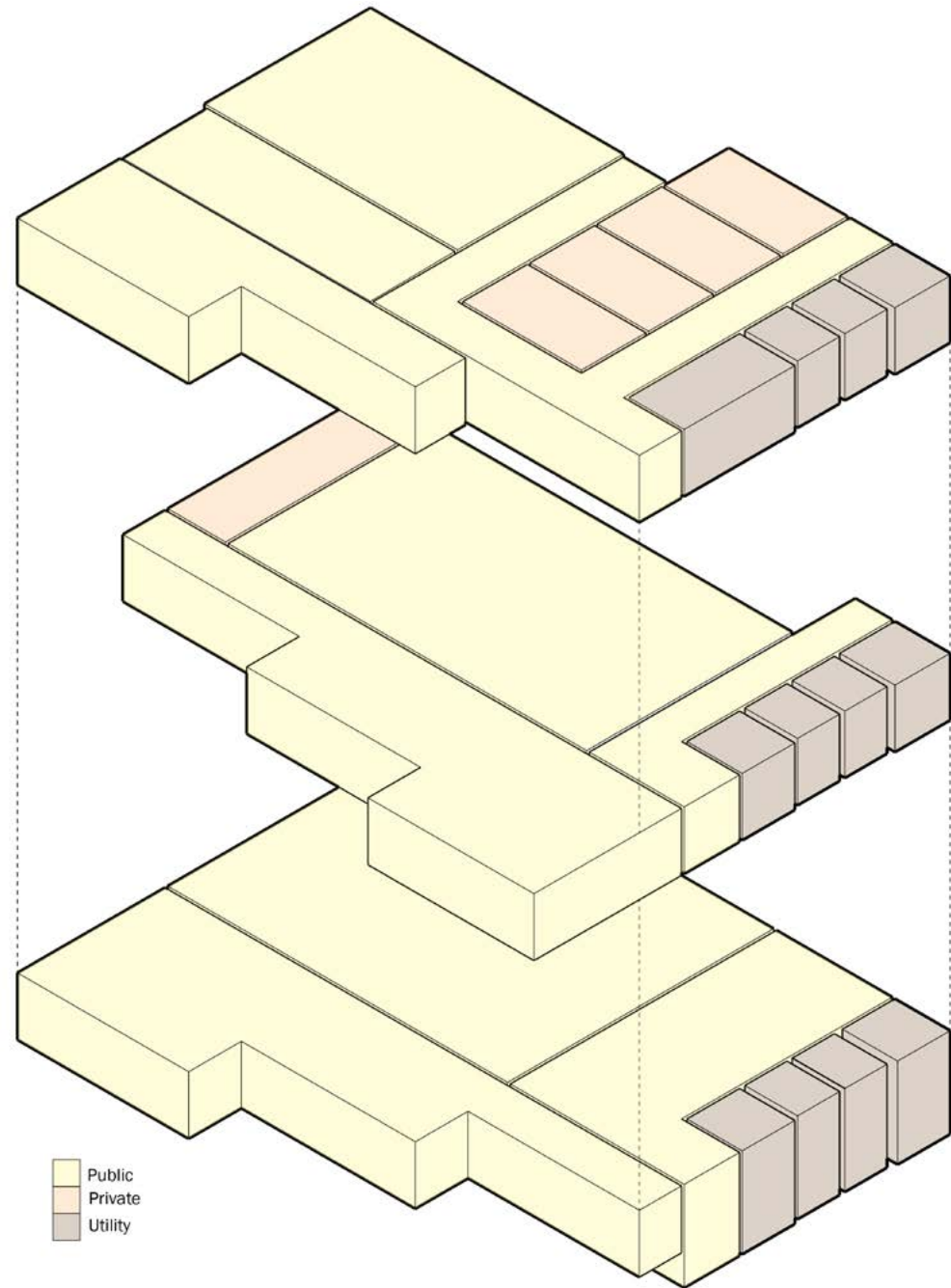
# Section B: Progression of the Day



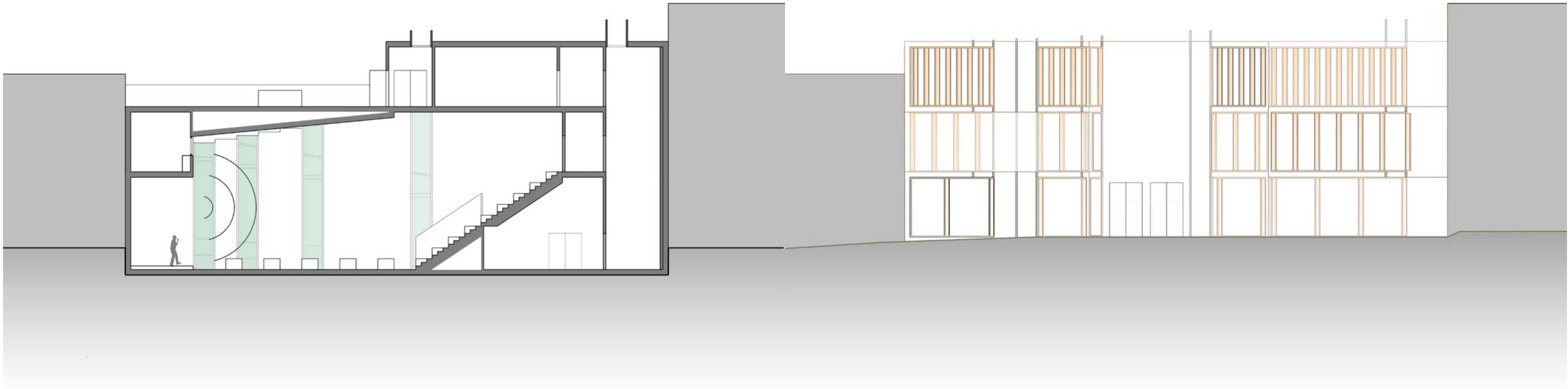
Rehearsal

Nighttime Performance

# Exploded Diagrams



# Concept to Building Diagrams



Echo Application Diagram

Intensity Application Diagram

# Material Precedent/Palette

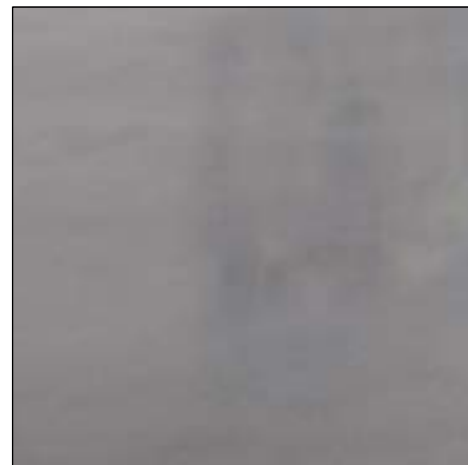


Gallery of Institute for Contemporary Art at VCU by Steven Holl

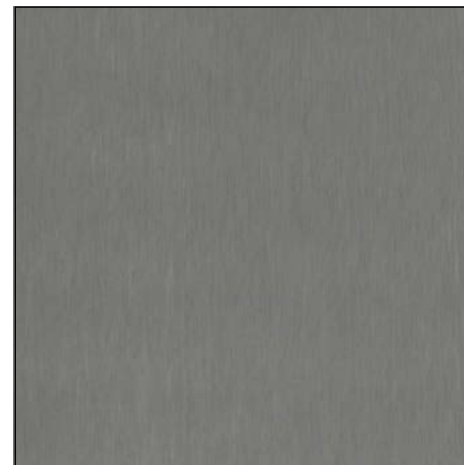
## Applying Materiality to Nubian Square Performing Arts Center



White Concrete Walls



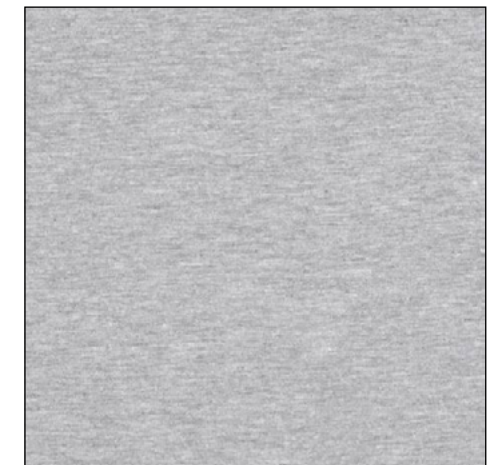
Concrete Floor



Grey Titanium Zinc  
(Skylights)



White Titanium Zinc  
(Exterior)



Charcoal Fabric  
(Theater Seating)

# Building Elevations



Front Facade Elevation

Back Facade Elevation



# Perspectives

